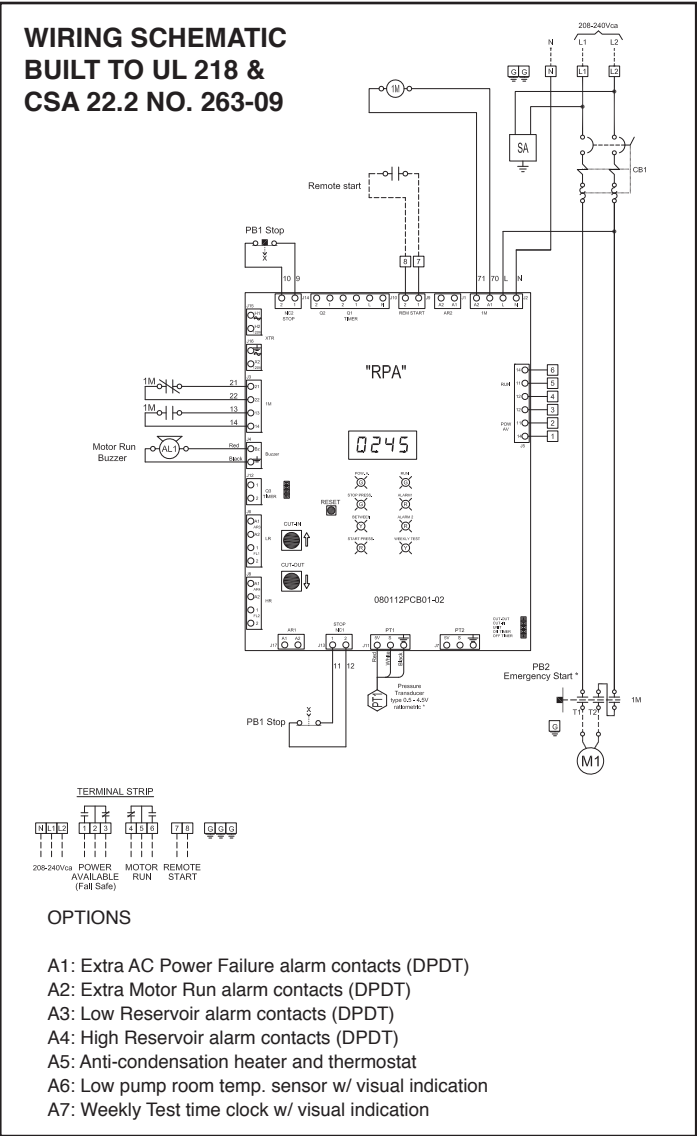


TYPICAL SPECIFICATION

The residential fire pump controller shall be a model RPA and rated for _____ V. / _____ HP / _____ Phase / _____ Hz and listed with UL and CSA and is suitable for use as service entrance equipment. The minimum rating of the enclosure shall be NEMA 2. The power circuit of the controller shall incorporate a circuit breaker main disconnect switch with through-the-door toggle operation and a contactor for across the line starting of the electric motor. The control circuit of the controller shall incorporate a control transformer for 24VAC control power, a combined start and emergency start pushbutton, a stop pushbutton and an alarm bell that sounds when the residential fire pump is in operation (motor running). A provision for the remote starting of the residential fire pump is also provided.

The controller shall be micro-processor logic based. Automatic operation of the residential fire pump shall be achieved with an electronic pressure monitoring module in conjunction with a pressure transducer. The module shall allow the user to digitally set the residential fire pump start and stop pressure values. The module shall continuously display the system pressure and, when required, the start and stop pressure settings on a four (4) digit digital display. Eight (8) high luminosity LED's shall indicate any alarm or system conditions. The pressure transducer shall be of 304 stainless steel construction and have a range of 0-300psi. Both the module and the pressure transducer shall be mounted inside the controller to prevent unauthorized adjustments or tampering.

The residential fire pump controller shall be manufactured by Tornatech.



RPA Model

Residential Fire Pump Controllers
Micro Processor Based



HOW TO ORDER A RESIDENTIAL FIRE PUMP CONTROLLER:



The Americas

Tornatech Inc.
Head Office
7075 Pl. Robert-Joncas
Suite # 132
Montreal, Canada
H4M 2Z2
Tel.: + 1 514 334 0523
+ 1 800 363 8448
Fax: + 1 514 334 5448

USA Sales Representative
Tel.: + 1 513 307 6766
Fax: + 1 513 759 0509
Latin America Sales Representative
Tel.: + 1 514 334 0523
Cell: + 1 514 945 4067
Fax: + 1 514 334 5448

Europe

Tornatech S.P.R.L.
Avenue Sabin 3
1300 Wavre
Belgium
Tel.: + 32 (0) 10 84 40 01
Fax: + 32 (0) 10 24 75 05

Middle East

Tornatech Fz-Llc.
P.O. Box 502221
Dubai, UAE
Tel.: + 971 50 8574639

Asia

Tornatech Pte Ltd.
49B Tuas South Ave 1
Tuas Cove
Industrial Centre
Singapore 637252
Tel.: + 65 6795 8114
+ 65 6795 7823
Fax: + 65 6795 3201



Residential Fire Pump Controller Micro Processor Based

The Tornatech Model RPA Micro Processor Based Residential Fire Pump Controller is designed to control one fire pump supplying water to a residential sprinkler system. The controller is available in 115V, 120V, 208V, 220V or 240V single phase 60 hertz incoming power and horsepower's up to and including 15 horsepower. It is approved by UL 218, meets CSA 22.2 No.263-09 and is suitable for use as service entrance equipment.

The standard power circuit consists of a circuit breaker main disconnect switch with thru-the-door toggle operation and a motor contactor for across the line starting of the residential fire pump motor. A provision for the remote starting of the residential fire pump is also provided.



• 4" alarm bell

The automatic operation of the residential fire pump is achieved through the electronic pressure monitoring module which uses a pressure transducer as a pressure sensing device. It allows the user to accurately set the start and stop pressure values and on or off delay timers. The module continuously displays the system pressure and, when required, the start and stop pressure settings on a four (4) digit digital display. Eight (8) high luminosity LED's indicate any alarm or system conditions. An audible alarm is also provided that sounds when the residential fire pump is in operation (motor running).

All this provides for precise settings, quick start-up and practical operation and maintenance which are major requirements for a residential fire pump system.



MAIN FEATURES

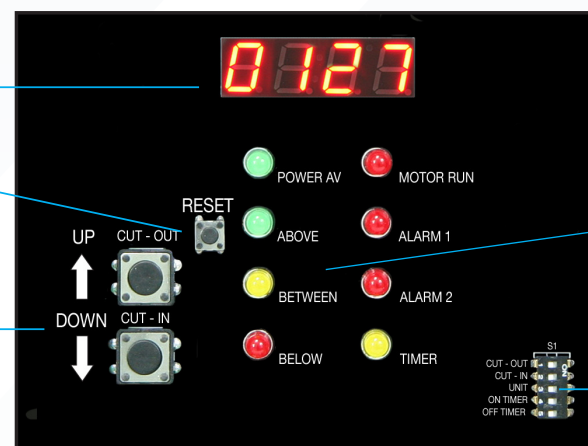
- Easy and quick start-up and operation
- NEMA 2 enclosure
- Micro-processor logic based
- Electronic pressure monitoring
- Eight (8) LED's for alarms and system conditions
- System pressure indication
- Pressure transducer
- Minimum run period timer
- Delay start timer
- Provision for remote start



- Toggle operated circuit breaker main disconnect with drip cover



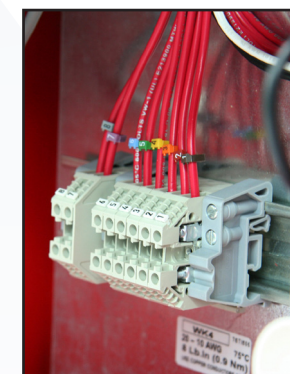
- START and EMERGENCY START pushbutton



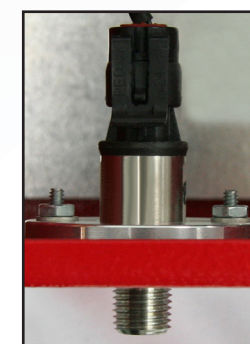
- 1 - High luminosity digital display
- 2 - RESET pushbutton
- 3 - Pushbuttons for setting and display of field adjustable parameters
- 4 - System status LED's
 - Power Available
 - System pressure above cut-out
 - System pressure between cut-out and cut-in
 - System pressure below cut-in
 - Motor run
 - Alarm 1 and 2
 - Timer counting
- 5 - Easy to use dip-switches for field adjustable parameters



- Single phase surge arrestor



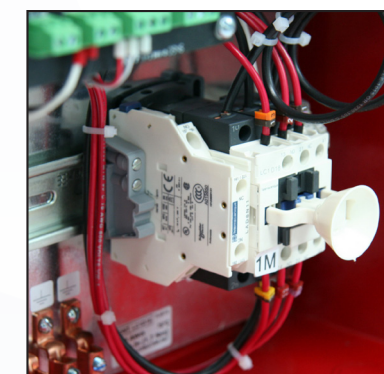
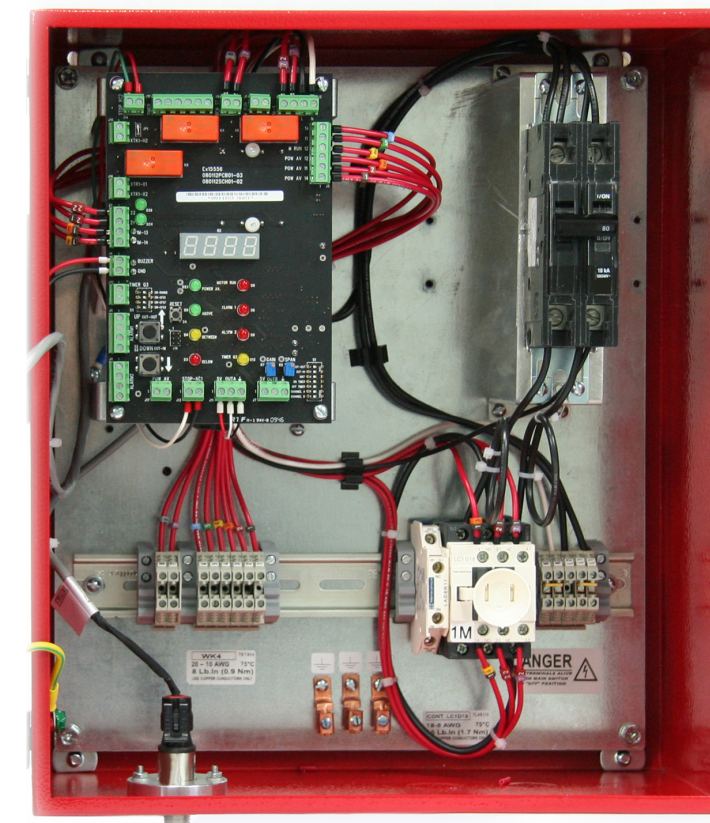
- Alarm contacts for Pump Run and Loss of Power



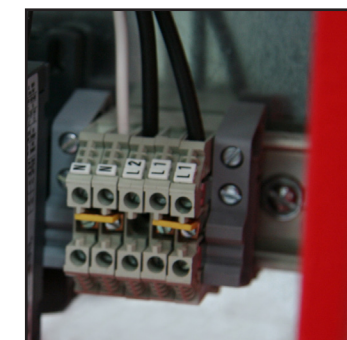
- Pressure transducer with 0-300psi range and 304 stainless steel construction



- Wall mounting lugs for ease of installation



- HP rated motor contactor



- Incoming power connection