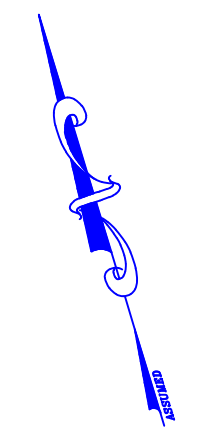
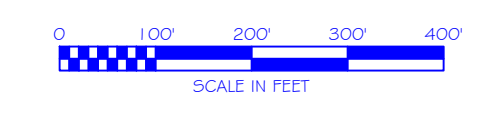
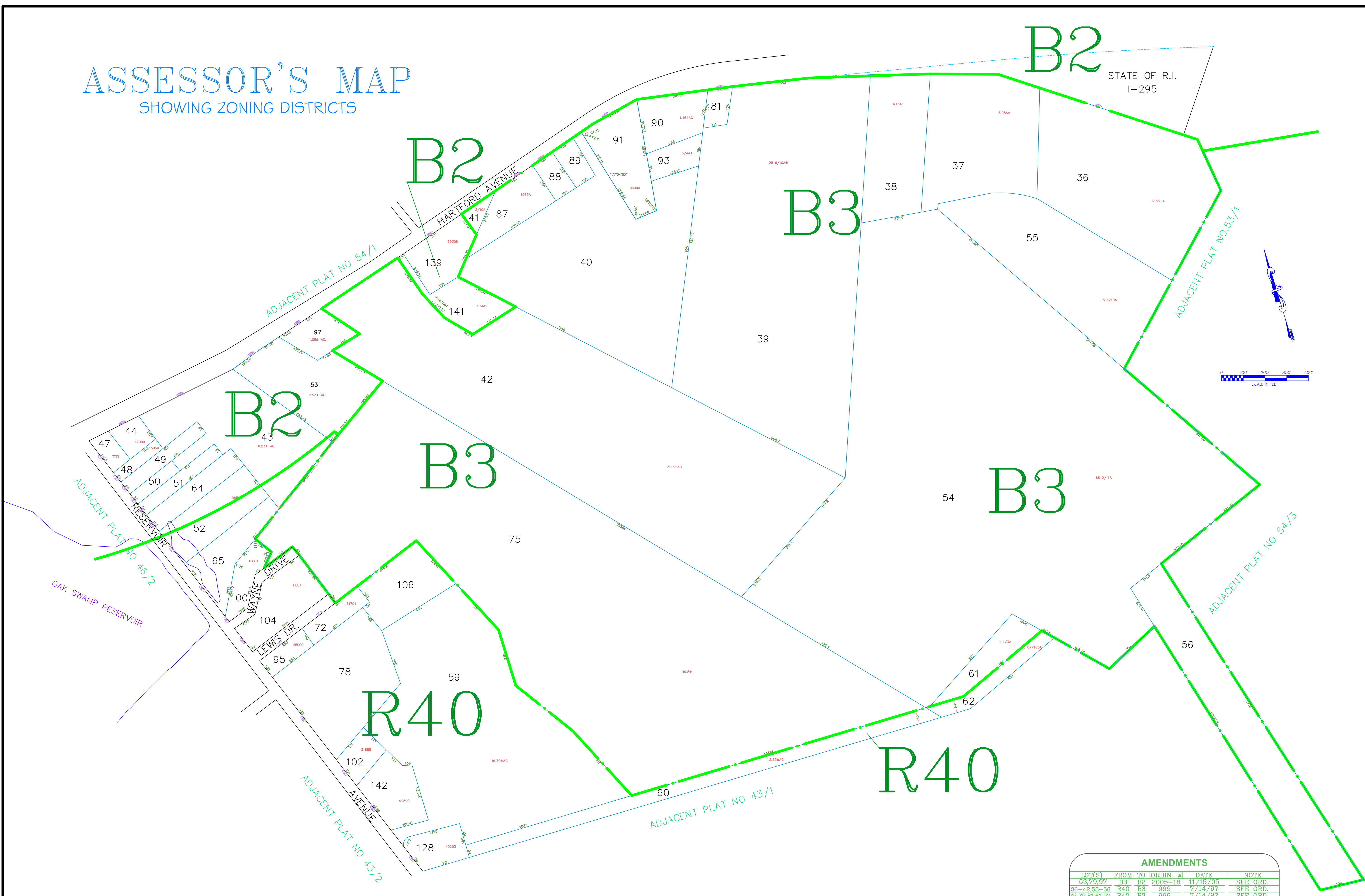


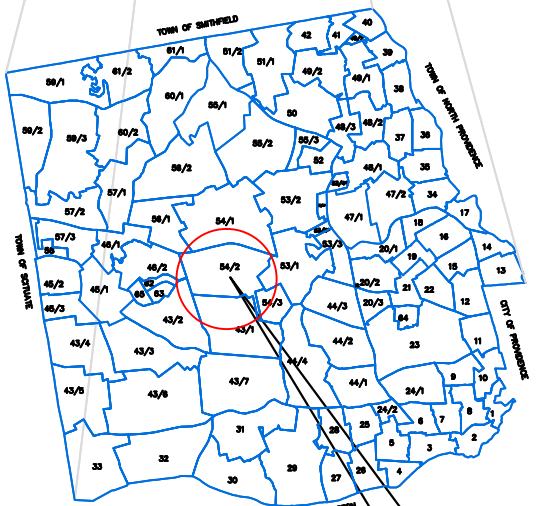
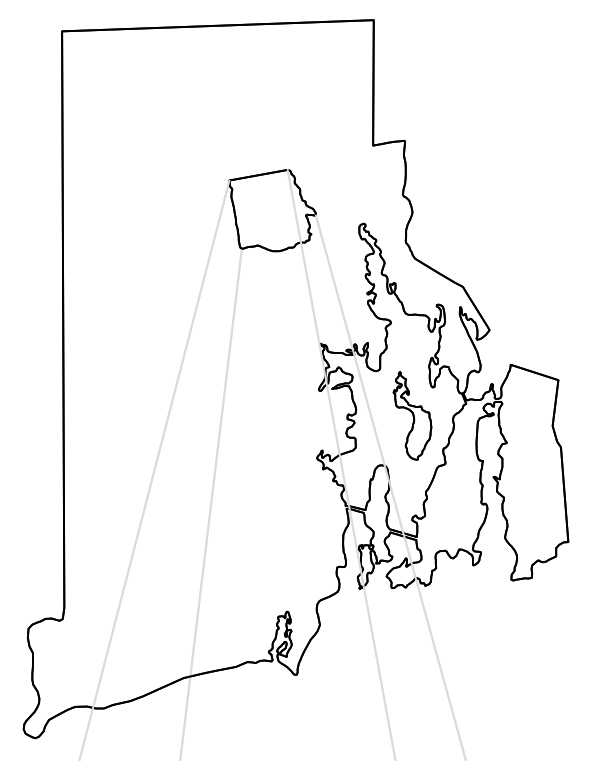
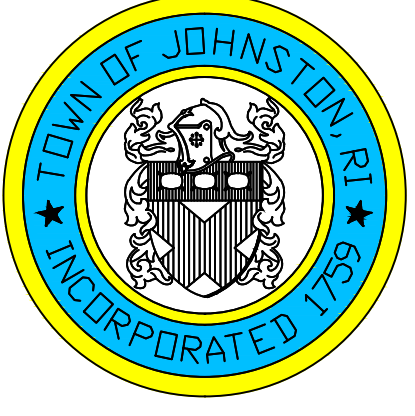
ASSESSOR'S MAP

SHOWING ZONING DISTRICTS



Assessor's Plat Number
54/2

STATE OF RHODE ISLAND
TOWN OF JOHNSTON
PROVIDENCE COUNTY
INCORPORATED 1759
ASSESSOR'S OFFICE
1385 HARTFORD AVENUE
JOHNSTON, RHODE ISLAND
02919



PLAT INDEX
AREA

Scale: 1:200
Revised By: Benjamin Ng
Last updated: January 05, 2015
Date printed: January 04, 2016

AMENDMENTS					
LOT(S)	FROM	TO	ORDIN. #	DATE	NOTE
53,79,97	B3	B2	2005-18	11/15/05	SEE ORD.
36-42,53-56	R40	B3	999	7/14/97	SEE ORD.
75,79,81,81,97	R40	B3	999	7/14/97	SEE ORD.
87-91,93,139	R40	B3	999	7/14/97	SEE ORD.
139	B3	B2	2002-19	2002	-

For copies of plat maps, please go to the DPW at 100 Irons Avenue Johnston Rhode Island. Thank you.

NOTE: This map was prepared for the use of the Town of Johnston for assessment and illustrative purposes only. It does not represent a survey of the premises. No liability is assumed as to the sufficiency or accuracy of the data delineated hereon.