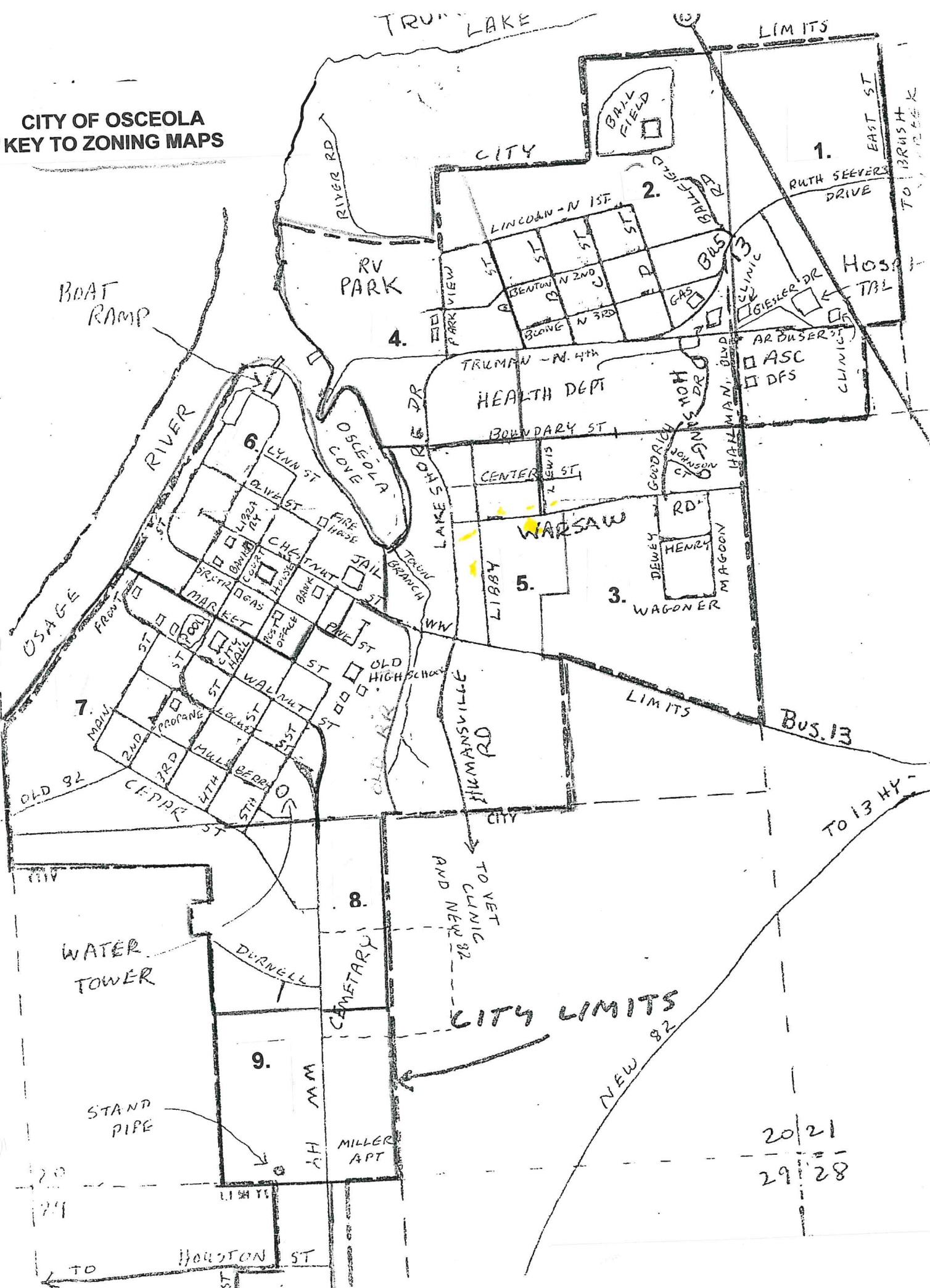


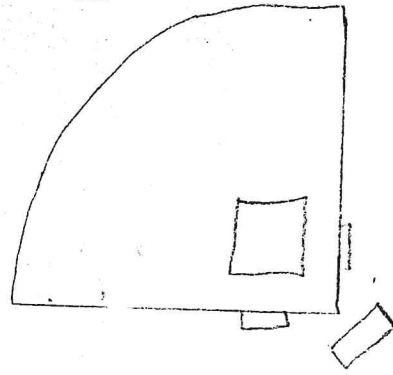
**CITY OF OSCEOLA
KEY TO ZONING MAPS**



20	21
29	28

2. ZONING - BALLFIELD & TRUMAN ROAD

OSCEOLA CITY LIMITS



PR

PR

UU

FIRST STREET

TRUMAN ROAD - 1st St.

SECOND ST - Benton

CORPUS TAKE LINE

R1

THIRD ST - Boone

B2

B2

SO

FOURTH ST Truman Road

R1

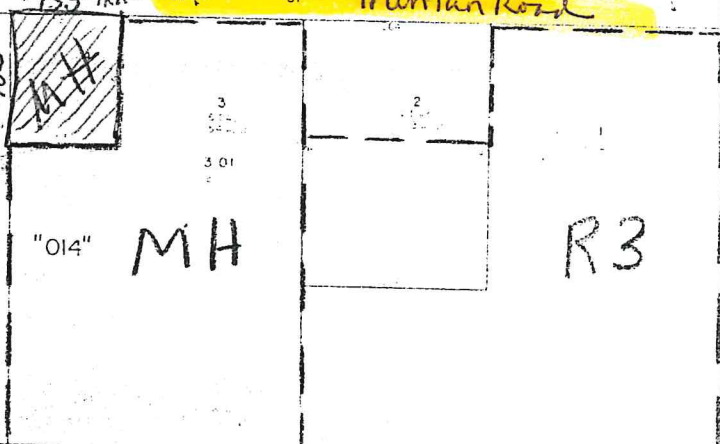
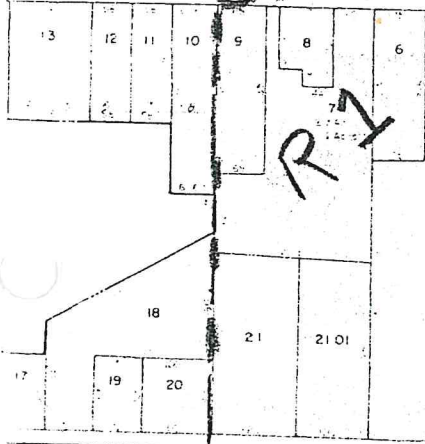


"014" MH

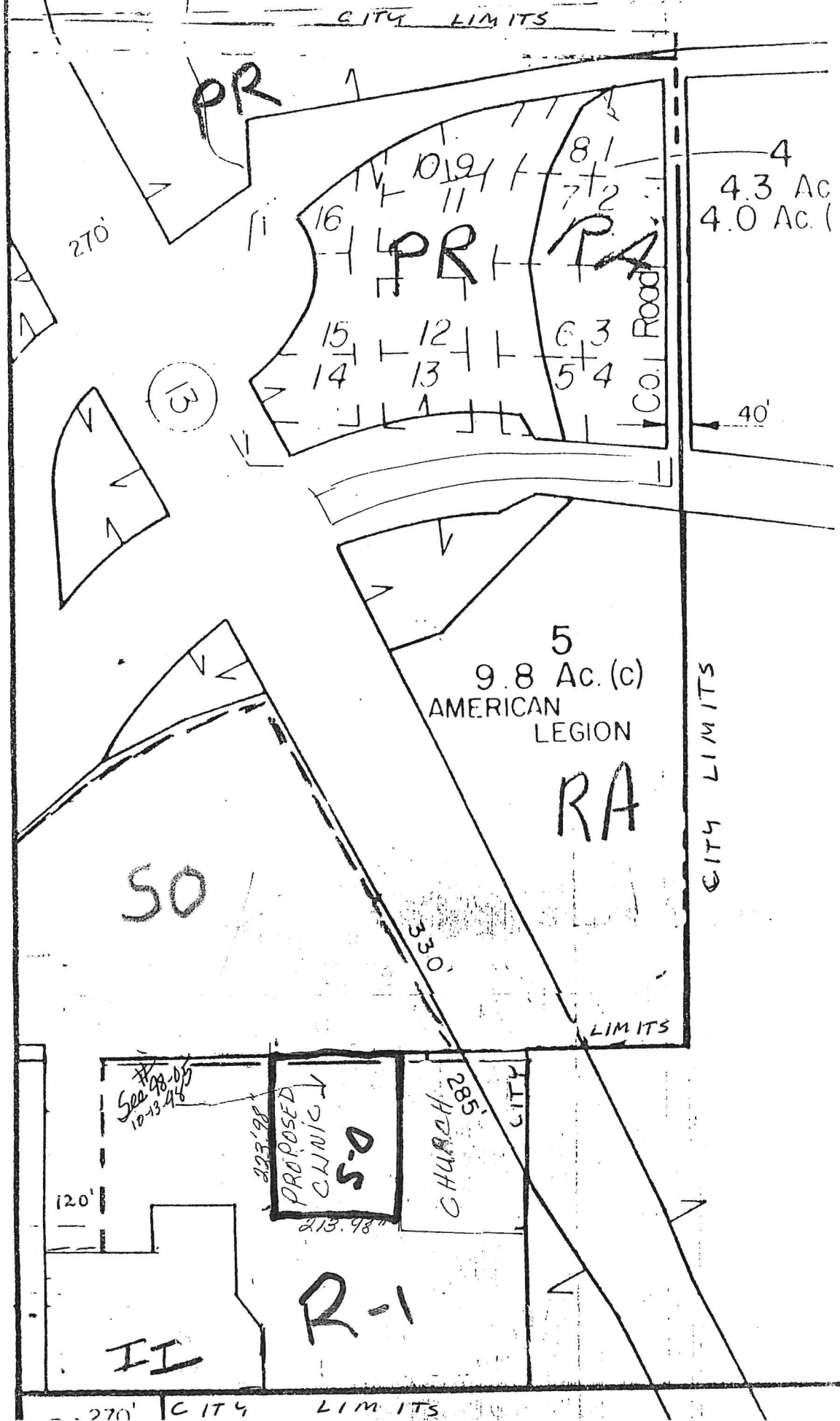
R3

* See 93-13
8-5 -93

** 94-07



1. ZONING - HOSPITAL HILL



NORTH

3. ZONING - HI-POINTE ADDITION

Voided by County
11-2-98
Rezoned
4-25-98
See #98-08

Rezoned
7-20-93
See #93-12

Rezoned
2-26-02
See #02-01
RezonED To B-2
12-8-98 See #98-12

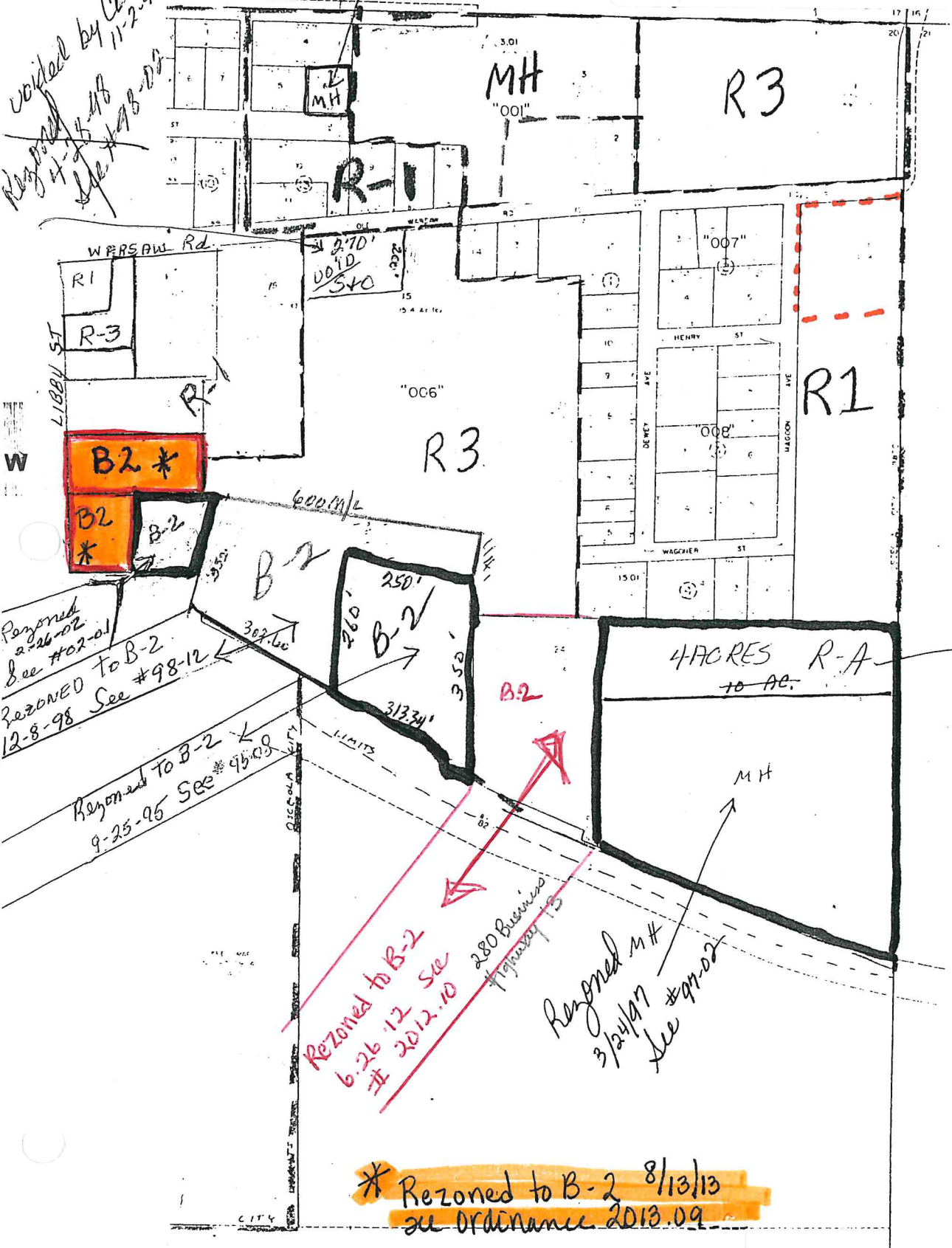
Rezoned To B-2
9-25-95 See #95-08

Rezoned to B-2
6-26-12 See
2012.10
280 Business
Highway 15

Rezoned MH
3/24/07
See #07-02

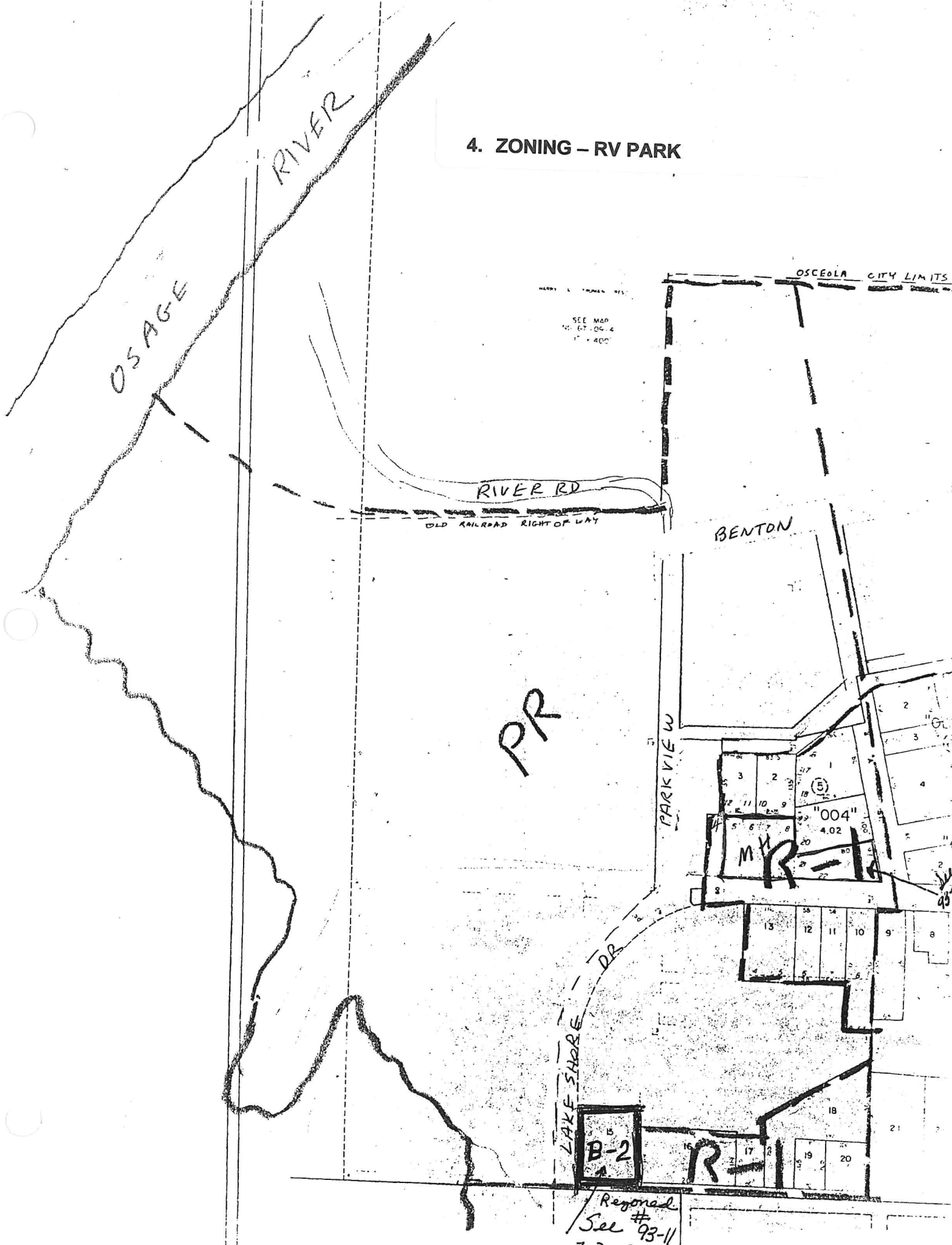
Rezoned 10-27-9
See #97-08

* Rezoned to B-2 8/13/13
see Ordinance 2013.09



S

4. ZONING - RV PARK



PR

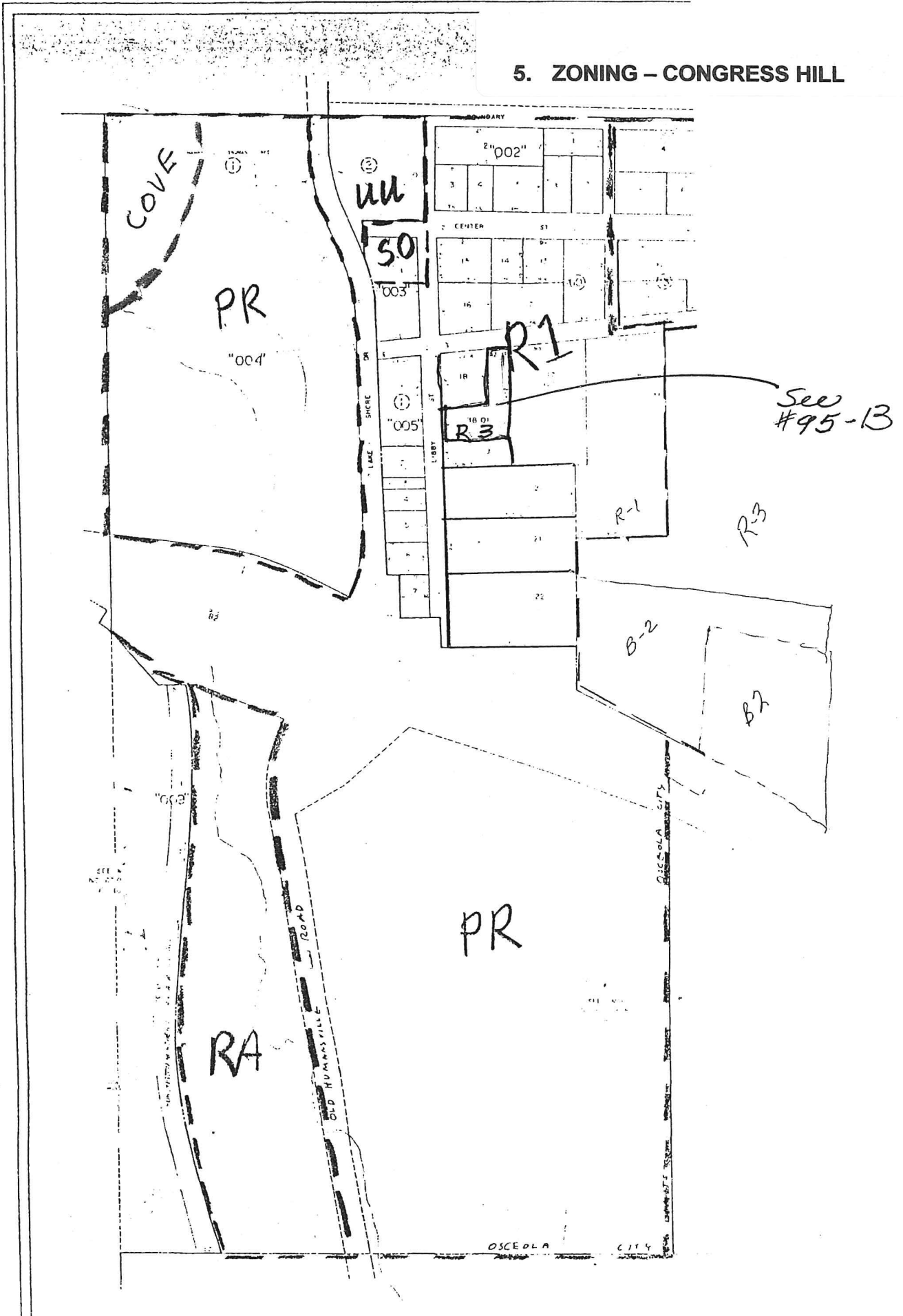
BENTON

MR-1
4.02
004

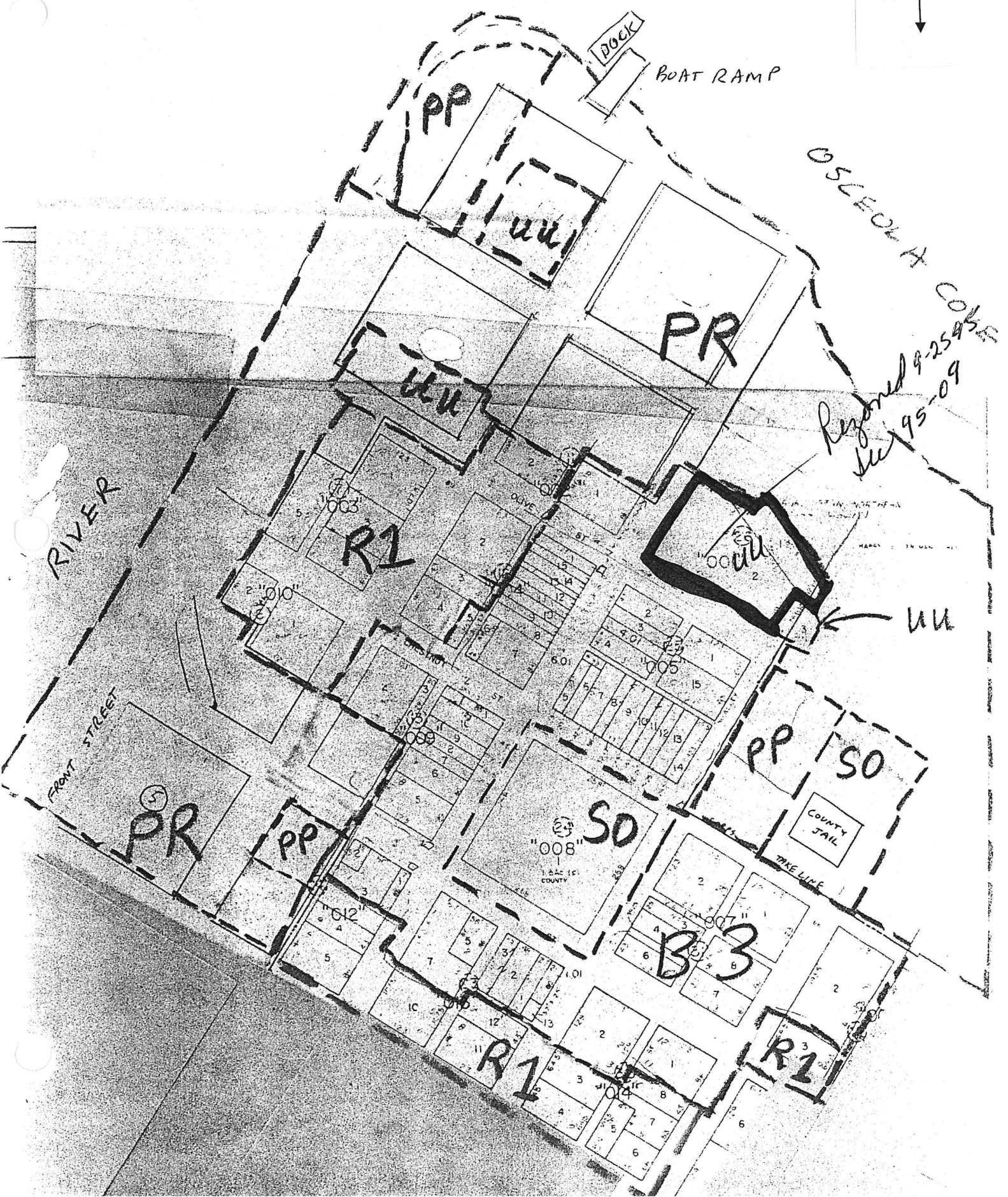
B-2

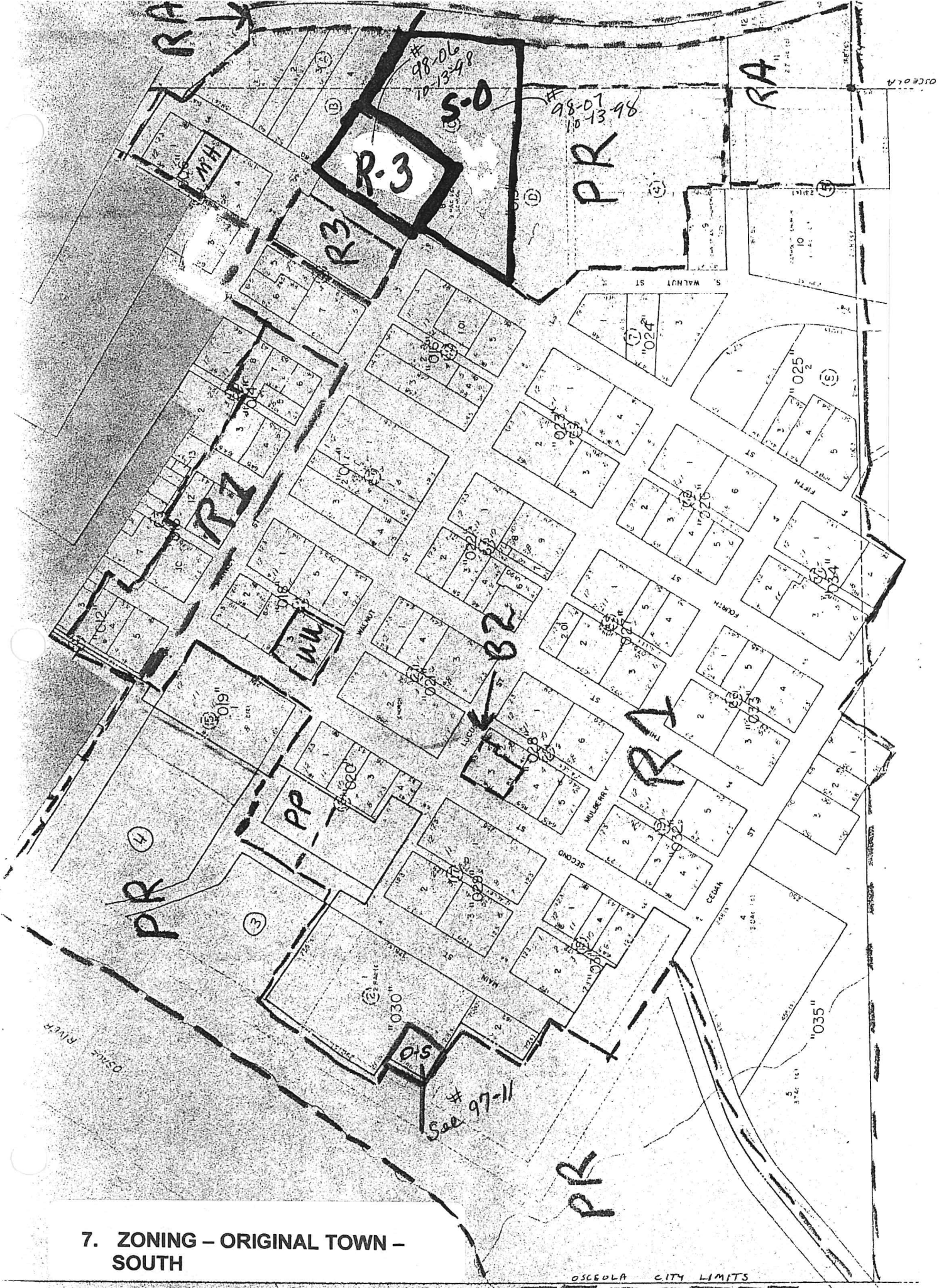
Regional
See # 93-11
7-20-92

5. ZONING - CONGRESS HILL



6. ZONING - ORIGINAL TOWN - NORTH



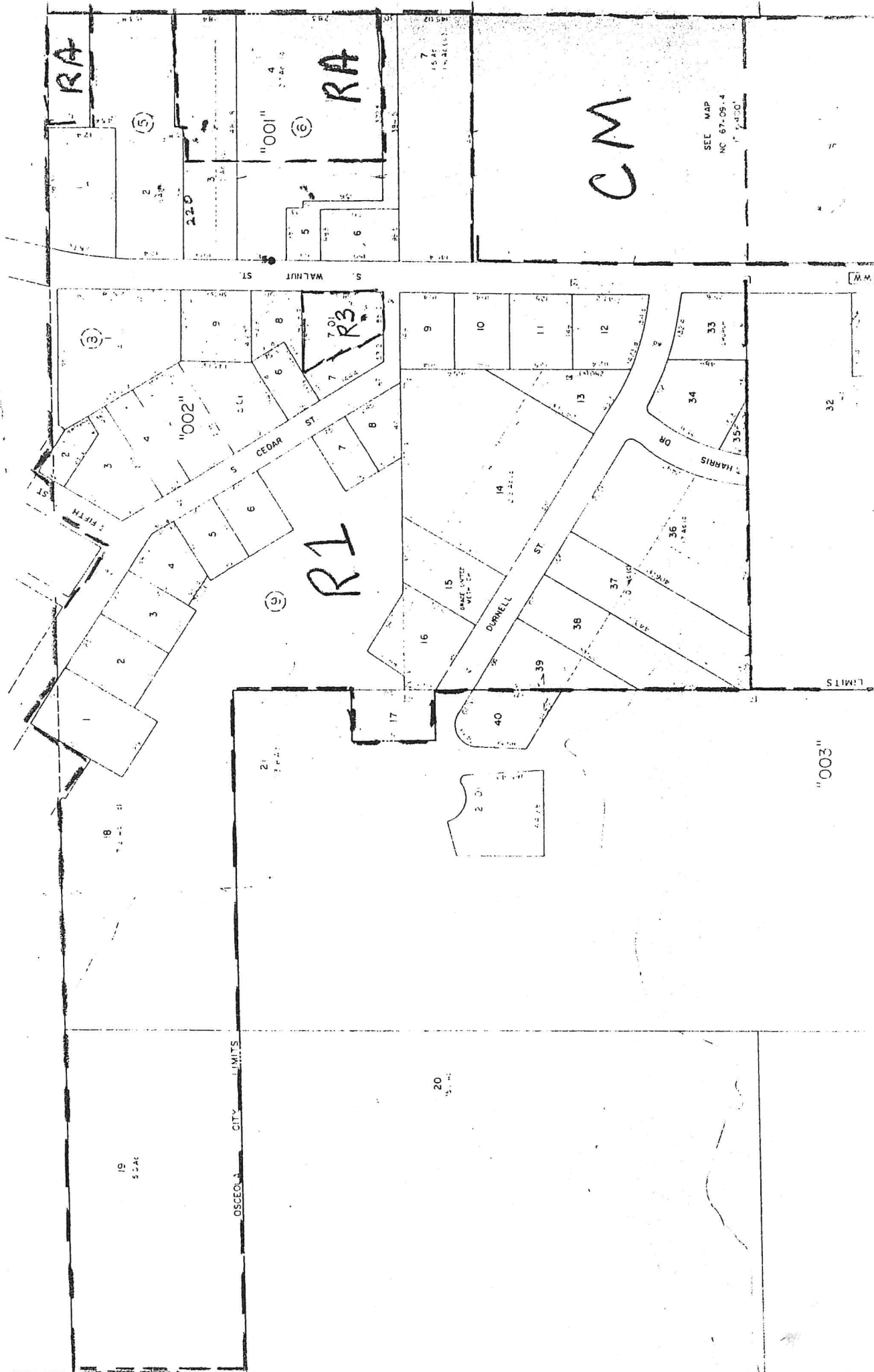


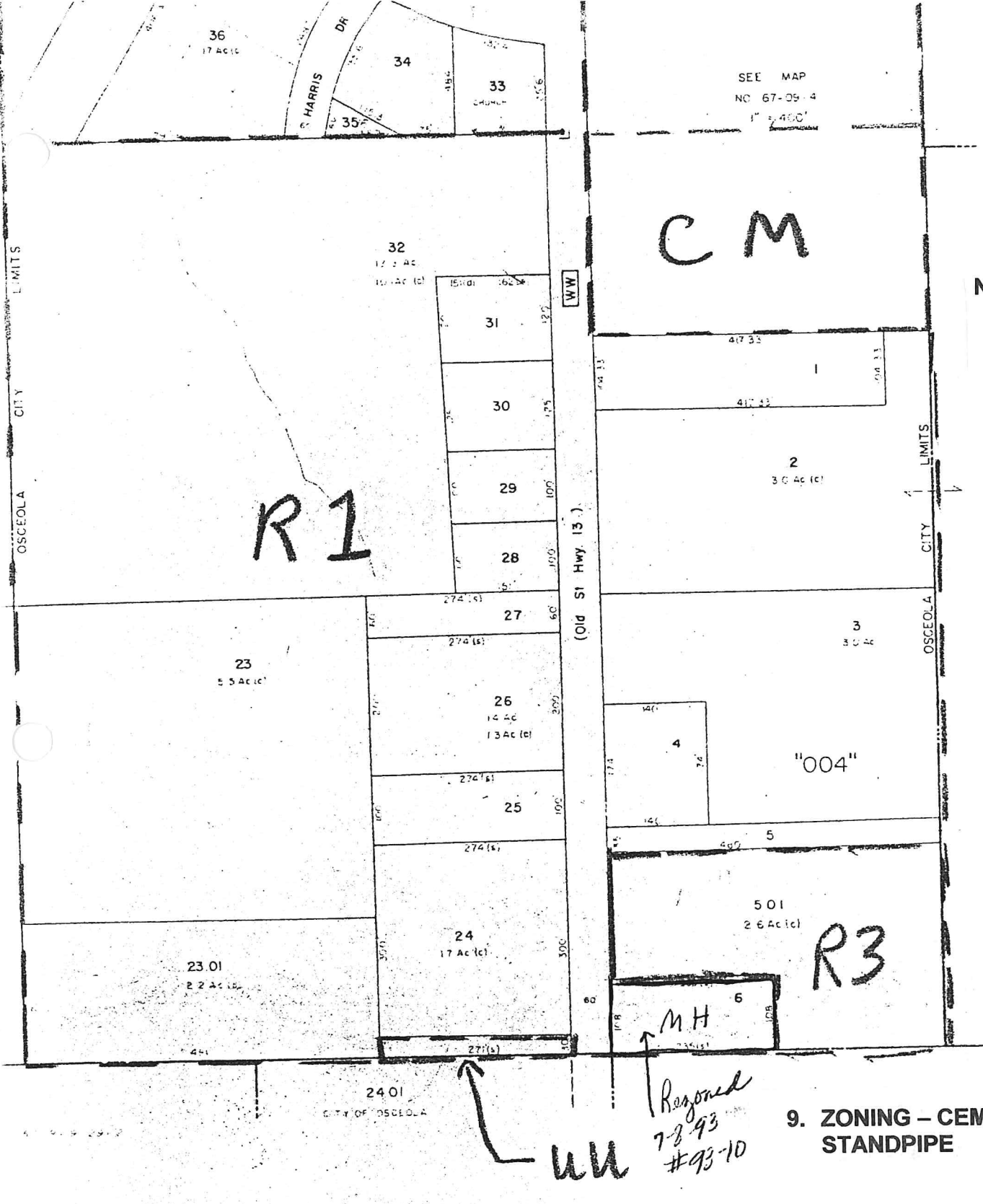
7. ZONING - ORIGINAL TOWN - SOUTH

OSCEOLA CITY LIMITS



8. ZONING - DURNELL ADDITION





u u
 Reasoned
 7-8-93
 #93-10

9. ZONING - CEMETERY TO STANDPIPE

LEGEND

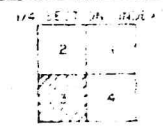
- AREA (FROM DEED) 100 Ac
- AREA (CALCULATED) 100 Ac (cl)
- DIMENSION (FROM DEED) 16.5'
- DIMENSION (SCALED) 16.5'
- DIVISION LOT NUMBER 23
- PANEL NUMBER 45
- WATER
- INTERSTATE HIGHWAY
- U.S. HIGHWAY
- STATE HIGHWAY
- COUNTY HIGHWAY
- WATER, STREETS, BRANCHES, ETC. - NO NAME

TOWNSHIP LOCATOR

190N	191N	192N	193N	194N	195N
03	05	06	07	01	02
12	11	10	08		
13	15	16	17		
22	21	20	18		
190W	189W	188W	187W	186W	185W

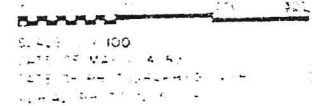
MAP SHEET INDEX

6	5	4	3	2	1
3		2	1		
7	8	9	10	11	12
18	17	16	15	14	13
19	18	17	16	15	14
22	21	20	19	18	17
23	22	21	20	19	18
24	23	22	21	20	19



SEC. 20 TWP. 36 N. R. 25 W.

MAP NO. 67-9-4-20-3



10. ZONING - OSCEOLA FAR SOUTH

