



Denver Postcard Club



POSTCARDS WITH COLOR BEFORE COLOR PHOTOGRAPHY - Part I

By Bobbie Heisterkamp

I have been collecting vintage postcards from Rocky Mountain National Park for 30 years, and my collection is housed in albums by topic.

An interesting discovery I had was that there were often popular images that were altered and reproduced again, and I put these together in their album for comparison.

They are usually a black and white photograph or lithograph followed by a hand-colored or colorized version.

This article explores these pairs and some of the interesting things about their producers.

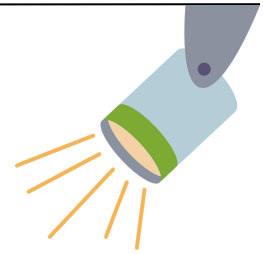
Continued on page 4.



IN THIS ISSUE:	
Featured Article	1
April Speaker Spotlight & Recap	2
Member News & Events	3
Donations	3
Featured Article Continued	4
Club Calendar	9
Contact Info	11
Membership Form	12

April Speaker Spotlight: Laurie Algar

Topic: Growing Up Disney

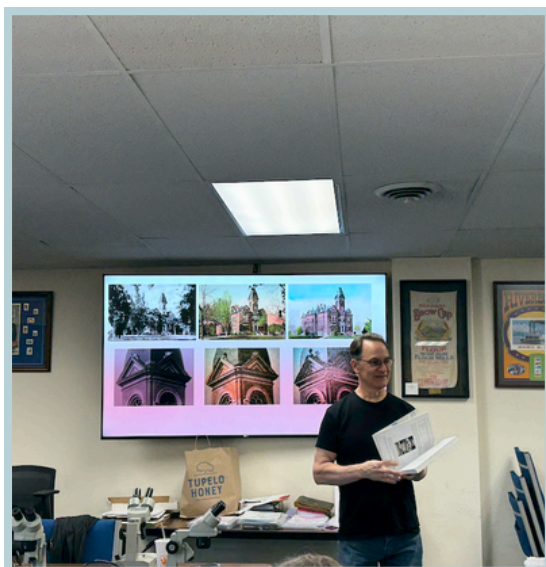


Laurie Algar, daughter of Disney Legend, James Algar, presents "Growing Up Disney" about her father's 43-year career as Animator, Producer, Director with Walt Disney Studio: winner of nine Academy Awards and Director of such classics including Bambi and Fantasia.

Laurie's talk features vintage photos, original animation model sheets, memos from Walt, Disney memorabilia, and personal letters (never seen before by the public) written during the creation of Snow White, Bambi, Fantasia, and the True Life Adventures.



March Meeting Recap



In March, speaker Mike Viney delivered a wonderful presentation on photomechanical postcards.

Printing a photographic image using ink on paper, known as a photomechanical print, reduced the cost of replicating images and made it easier to colorize an image made from a black and white photograph.

Member News & Events



Annual Button Show & Sale

Presented by:

[Colorado State Button Society](https://coloradobuttonsociety.com)

- April 12 - 13, 2025
- Free admission
- Event location:
Embassy Suites by Hilton,
4444 Havana Street
Denver, CO 80239



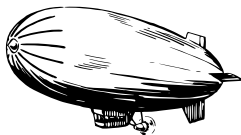
Show and Tell Topics

Bring a postcard from your collection or find one in the club's boxes that includes the designated monthly topic.

This is optional; if you bring a card there will be time to share it at the meeting.

April: Blimps

May: Military/veteran



Donations

We continued to receive donations in March.

- Suzanne G. (Arvada, CO) =
214 postcards and 2 albums

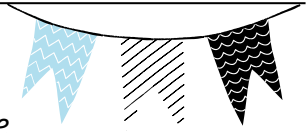
Thank you to everyone who donates or is involved with collecting donations.

Total donations this year:
5,187



Postcards with Color Before Color Photography

....continued from front page



ENOS A. MILLS

Enos Mills built the Longs Peak Inn in 1906 using singed logs from the 1900 Bear Lake fire. He had a store in the lobby called The Trail Shop and he sold many of his sepia photographs to guests as postcards to be mailed from the post office located at the Inn.



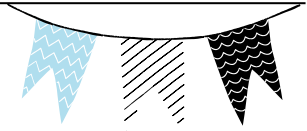
One of these photos was labeled "Longs Peak, Colorado," and was taken from the trail up Longs Peak looking down on his inn. The paired postcard was produced by the Burlington Railroad which was promoting routes to several of the national parks.

F.J. FRANCIS

Frances J Francis was a photographer who worked in Estes Park in the 1920s and 1930s. He produced many real photograph postcards of scenes from Rocky Mountain National Park.



Postcards with Color Before Color Photographycontinued from page 4



F.J. FRANCIS



The first pair shows the old Fall River Road from Estes Park to Grand Lake being cleared by hand in spring in time for the June opening. The second postcard is colorized version of the same image published by the Rocky Mountain Parks Transportation Company which offered vehicle excursions into Rocky Mountain National Park.

The second pair (to the left) shows Dream Lake with a low cloud hanging over the mountains and reflected in the lake.

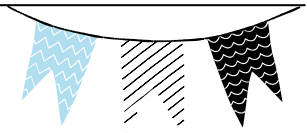
F.P. CLATWORTHY

Fred Payne Clatworthy was a prolific photographer living in Estes Park from 1907 to the 1940s, and he had a store called "Ye Lyttle Shop" where postcards, photographs and art were sold.

He would send real photographs to the Albertype Company in New York, and the staff would hand-color the photograph negative and then print a limited quantity of postcards from that negative.



Postcards with Color Before Color Photographycontinued from page 5



F.P. CLATWORTHY



F P Clatworthy Real Photograph
(No Caption) Estes Park Chalets Fireplace



F P Clatworthy, Albertype Hand-Colored
Estes Park Chalets, Rocky Mountain Lodges, RMNP



Unknown real photograph #186
No caption (Notch Top Mountain)



Albertype, F P Clatworthy
Notch Top Mountain, from Outlet of
Odessa Lake, Estes-RMNP

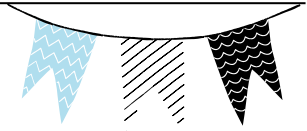


F P Clatworthy real photograph
Fern Lake



F P Clatworthy, Albertype Company
Fern Lake, Estes - RMNP, Colo.

Postcards with Color Before Color Photographycontinued from page 6



H.H. TAMMEN

Harry Haye Tammen was a newspaper publisher who partnered with Fredrick Bonfils to produce *The Denver Post*. He produced many lithograph postcards from 1910 to 1950.

Some of the original black and white lithographs were colorized by his company and republished, ie. Hallett Peak fom Bear Lake with young boy fishing, the YMCA Grounds and Odessa Lake, and some were picked up by other publishers, ie. Crystal Lake which later appeared as a Detroit Publishing Company postcard.



H H Tammen #560
Y.M.C.A. Conference Grounds, Estes Park, Colorado



H H Tammen #4037
Y.M.C.A. Conference Grounds, Estes Park, Colorado, RMNP



H H Tammen #521
Hallett Peak from Bear Lake, Estes Park, Colo.



H H Tammen #15181
Mt. Hallett from Bear Lake, Estes Park, Colorado RMNP



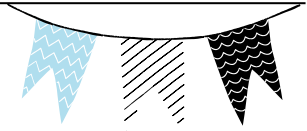
H H Tammen
Crystal Lake, Estes Park, Colo. RMNP



Detroit Publishing Company Phostint
#71799
Crystal Lake and Mt. Fairchild RMNP

Postcards with Color Before Color Photography

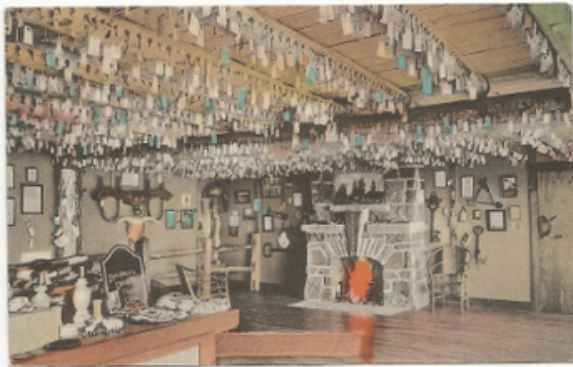
....continued from page 7



HOFFMAN



Hoffman Real Photograph #191
Keystone Fireplace, Baldpate Inn, Estes Park, Colo.



Baldpate Inn, Albertype, Hand-Colored
Keystone Fireplace, Baldpate Inn, Estes Park, Colo.



Baldpate Inn, Albertype Company
Guest Lounge, Baldpate Inn, Estes Park, Colo.

Hoffman had a photograph studio in Longmont Colorado in the 1930s and 1940s. He produced many real photograph postcards and sent those images to the Albertype Company in New York to be hand-colored by the staff and printed as postcards. Sometimes the staff did not know the original colors, so they ad-libbed, as in the Indian rug in the Baldpate Inn Lounge which was white in one postcard and blue in another.

Look in your own collection carefully and see if you might also have pairs of black and white and color of the same image.

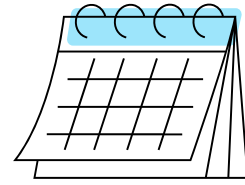


Hoffman real photograph #159
Guest Lounge, Baldpate Inn, Estes Park, Colo.



Baldpate Inn, Albertype Company
Guest Lounge, Baldpate Inn, Estes Park, Colo.

Club Calendar - Plan Ahead!



MAY

- 5/4* - Club Meeting
**First Sunday*

JUNE

- 6/8 - Club Meeting

JULY

- 7/19 - Volunteer Event with Palmer Lake Historical Society

AUGUST

- TBD - Summer Picnic

SEPTEMBER

- 9/14 - Club Meeting

OCTOBER

- 10/12 - Club Meeting

NOVEMBER

- 11/9 - Club Meeting

DECEMBER

- TBD - Holiday Party

Club Contact Information



**2025
Officers**

Liz Franco, President

Deb Simpson, Vice President

Shad Daly, Secretary

Jennifer Simpson, Treasurer

Charles Twomey, Assisting Treasurer

Beth Tallmadge, Membership Chair



EMAIL US:	MEETING SPACE ADDRESS:
denverpostcardclub@gmail.com	Rocky Mountain Philatelic Library 2048 S. Pontiac Way Denver, CO 80224
The Denver Postcard Club Newsletter is published 10 times a year by the Denver Postcard Club, a 501(c)(3) Tax Exempt Organization.	

Thank you for reading! See you soon.



Denver Postcard Club Membership Form 2025

denverpostcardclub@gmail.com

PLEASE PRINT CLEARLY

Mail or deliver completed form with payment to: Beth Tallmadge, DPCC Membership Chair 12561 W Alameda Dr Lakewood, CO 80228-2816

Or bring this form to a Postcard Club monthly meeting (second Sundays at 1pm) at:

Rocky Mountain Philatelic Library (meeting room building)

2048 S Pontiac Way

Denver, CO 80224

Membership includes newsletters, access to club cards for purchase, informative discussions and presentations at meetings, and social events. Family membership members must live at the same address.

Payment methods are **Check or Cash only**. No credit card or app payments.

Make checks payable to **DENVER POSTCARD CLUB**.

Today's Date:		
Name(s):		
Street Address:		
City:		
State:		
Zip:		
	Family Member 1	Family Member 2
Phone (cell/home):		
Email:		
Postcard Topics I like:		

Regular Annual Membership Dues (check one):

Individual - \$15		Family - \$20	
--------------------------	--	----------------------	--

OPTIONAL Prepaid Lifetime Membership Dues Rates (to avoid annual renewal dues):

Age Range Oldest Member (as of Jan 1)	Under 60		60 – 74		Over 74	
Individual	\$250		\$195		\$60	
Family	\$335		\$260		\$80	

Half Year Dues (First Year New Members **joining after June 30** only) Check one:

Individual - \$8		Family - \$11	
-------------------------	--	----------------------	--

Supplemental donation for Children's Project work**	\$
---	----

** Denver Postcard Club is classified as a charitable organization under Section 501(c)(3) of the Internal Revenue Code. Donations in excess of membership dues may be tax deductible for certain taxpayers. You will receive a confirmation letter for your donation.

Date Paid:		Check # or Cash:	
NEW/RENEWAL			