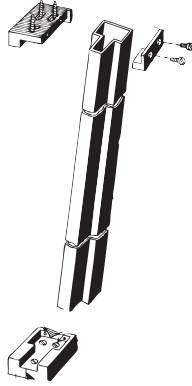


MULLION

S

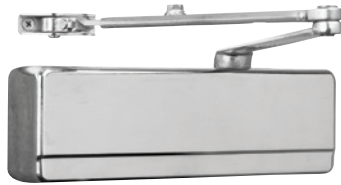


- For double door applications without existing mullion
- T-shaped - 2-1/2" x 3"
- Size: 96" long
- Finish: Prime coat aluminum

MFG #	TYPE	EZ #
L980P	Removable	070972

351 & 1431 DOOR CLOSERS

BHMA
GRADE 1

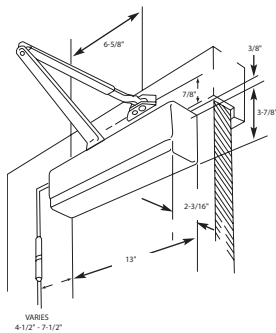


1431

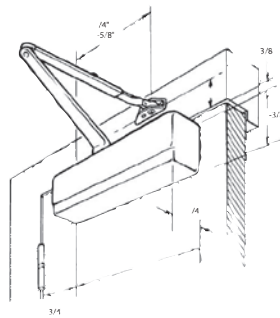
- ANSI/BHMA A156.4 Grade 1
- Conforms to UL10C and UBC for positive pressure fire test
- cUL listed to Canadian safety standards listed for use on fire doors
- For interior and exterior applications
- High impact non-corrosive plastic covers standard
- Adjustable from size 1 to 6
- Complies with handicap regulations for reduced open force
- Non-handed
- Meets ADA requirements
- All weather capabilities

351

- Powerglide® line of surface door closers has been engineered to meet the demands of architects and building owners
- Ideally suited for exterior doors in heavy draft and wind conditions
- Rack & pinion for better control
- Heavy duty one piece die cast aluminum silicon alloy body with 14% silicon provides superior strength and wear resistance



351



1431

1431

- General purpose quality grade closer
- Retrofits discontinued 1230/ 1231 models
- Constructed from a carefully selected aluminum silicon alloy to accommodate the door closer characteristics increasing the body strength and wear resistance
- Key control valves offer separate regulating for door speed, latching & backcheck

MFG #	FINISH	EZ #
351 UO EN	Sprayed Aluminum	036959
1431UO EN	Sprayed Aluminum	080302