

**Burlington
Livestock
Exchange**

Steve Schneider, Owner 620-376-2577
Dennie Flock, Manager 719-349-1991
Charlene Flock, Office Manager
Jim Bob Paintin, Asst. Mgr. 719-349-5286
PO Box 39, Burlington CO 80807



"More Bucks for your Livestock"

April 6 , 2017

Office 719-346-8900
Fax 719-346-7545
Perry White, Field Rep 719-743-2191
Mike Griebel, Field Rep 719-349-1253
Web page: www.bleinc.com
Email: ble@rebeltec.net

For our auction on Thursday, April 6, we sold 738 cattle for 71 different consignors. All the stocker and feeder cattle offered this week sold fully steady with one week ago. Slaughter cows and bulls sold steady as well.

Steers			
Estrogen Cattle Co, KS	17 angx	392	183.00
Troy Klassen, Co	9 angx	403	207.50
Estrogen Cattle Co, Ks	29 angx	470	181.00
Shaw Ranch, CO	10 red angx	504	174.00
George Stahlecker, Co	9 ang/redangx	514	175.00
Bledsoe Livestock, Co	3 angx	531	167.00
River Bend Ranch, Co	9 red agnx	555	166.00
Tim Ridnour, CO	4 angx	586	158.00
Wailes Farms Inc, CO	2 angx	637	156.00
Greg Owens, KS	5 angx	648	150.00
Dennis & Matt Campbell, Co	3 angx	740	140.00
Sappa Bend Farm, CO	8 red angx	806	134.00

Heifers			
Norm Akers, Co	6 angx	295	180.00
Bledsoe Livestock, Co	5 angx	421	160.00
Troy Klassen, Co	30 angx	505	155.00
Shaw Ranch, Co	25 red angx	522	157.50
Troy Klassen, Co	17 angx	600	144.00
Garry Wollert, Co	10 angx	725	130.00

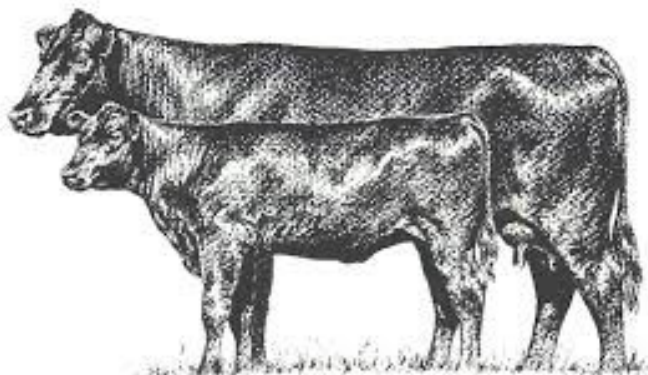
COW MARKET

High Yield Cows	64.00 to 76.00
Boning Cows	60.00 to 65.00
Slaughter & Feeding Bulls	74.00 to 99.50

Upcoming Auctions

April 13 ~ Regular Cattle Auction
April 17 ~ Pharo Bull Auction
April 20 ~ Regular Cattle Auction
April 27 ~ Regular Cattle Auction

Buyers and Sellers who are not able to attend a sale can participate or view to bid on cattle selling at BURLINGTON LIVESTOCK EXCHANGE at www.cattleusa.com. Pre registration is required 24 hours prior to sale to bid online. This is real time and viewable on computers anywhere in the country.



To sign up for weekly consignment & market list by email go to www.bleinc.com & Sign up.