

# CF Fittings

CF

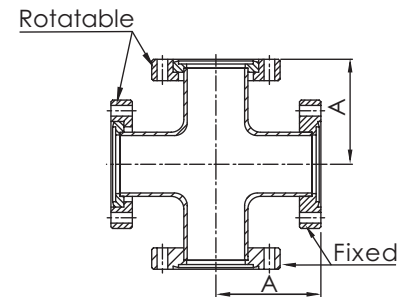


## CF 4-WAY CROSSES

\*Material: SS 304L

\*Tube Finish: Bead Blast

Part Number	Flange Size	A
CF-4C-133	CF1.33"(DN16)	38.10
CF-4C-212	CF2.12"(DN25)	52.00
CF-4C-275	CF2.75"(DN40)	62.50
CF-4C-338	CF3.38"(DN50)	81.80
CF-4C-450	CF4.50"(DN63)	85.90
CF-4C-462	CF4.62"(DN80)	89.70
CF-4C-600	CF6.00"(DN100)	109.70

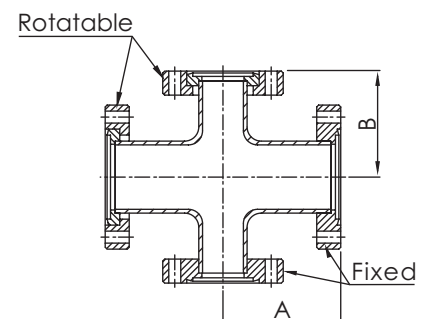


## CF 4-WAY REDUCING CROSSES

\*Material: SS 304L

\*Tube Finish: Bead Blast

Part Number	Flange Size	A	B
CF-4RC-275x133	CF2.75"(DN40)/CF1.33"(DN16)	62.50	47.50
CF-4RC-275x212	CF2.75"(DN40)/CF2.12"(DN25)	62.50	58.20
CF-4RC-338x133	CF3.38"(DN50)/CF1.33"(DN16)	81.80	54.10
CF-4RC-338x275	CF3.38"(DN50)/CF2.75"(DN40)	81.80	68.80
CF-4RC-450x275	CF4.50"(DN63)/CF2.75"(DN40)	85.90	75.20
CF-4RC-450x338	CF4.50"(DN63)/CF3.38"(DN50)	85.90	88.40
CF-4RC-462x338	CF4.62"(DN80)/CF3.38"(DN50)	89.70	94.70
CF-4RC-462x450	CF4.62"(DN80)/CF4.50"(DN63)	89.70	92.20
CF-4RC-600x275	CF6.00"(DN100)/CF2.75"(DN40)	109.70	94.20
CF-4RC-600x338	CF6.00"(DN100)/CF3.38"(DN50)	109.70	107.40
CF-4RC-600x450	CF6.00"(DN100)/CF4.50"(DN63)	109.70	104.90
CF-4RC-600x462	CF6.00"(DN100)/CF4.62"(DN80)	109.70	104.90



\*Note: SS 316LN (SS 316L Tube+ SS 316LN Flange) Material Available on Request.

\*Note: Polished and Electro- Polished Tube Finishes Available on Request.

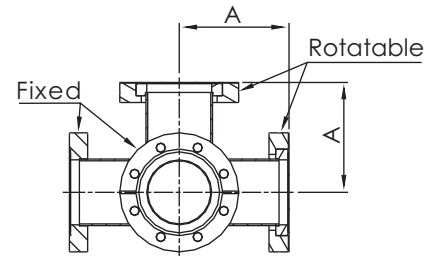
# CF Fittings



## CF 5-WAY CROSSES

\*Material: SS 304L  
\*Tube Finish: Bead Blast

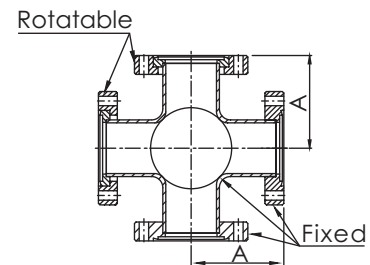
Part Number	Flange Size	A
CF-5C-133	CF1.33"(DN16)	38.10
CF-5C-212	CF2.12"(DN25)	52.00
CF-5C-275	CF2.75"(DN40)	62.50
CF-5C-338	CF3.38"(DN50)	81.80
CF-5C-450	CF4.50"(DN63)	85.90
CF-5C-462	CF4.62"(DN80)	92.20
CF-5C-600	CF6.00"(DN100)	134.90



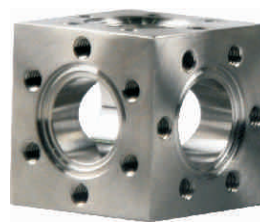
## CF 6-WAY CROSSES

\*Material: SS 304L  
\*Tube Finish: Bead Blast

Part Number	Flange Size	A
CF-6C-133	CF1.33"(DN16)	38.10
CF-6C-212	CF2.12"(DN25)	52.07
CF-6C-275	CF2.75"(DN40)	62.48
CF-6C-338	CF3.38"(DN50)	81.79
CF-6C-450	CF4.50"(DN63)	85.85
CF-6C-462	CF4.62"(DN80)	92.20
CF-6C-600	CF6.00"(DN100)	134.90



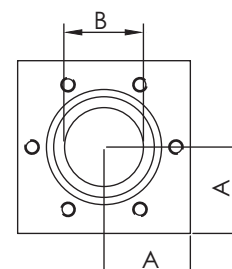
\*Note: SS 316LN (SS 316L Tube+ SS 316LN Flange) Material Available on Request.  
\*Note: Polished and Electro- Polished Tube Finishes Available on Request.



## CF 6-WAY CUBES

\*Material: SS 304L

Part Number	Flange Size	A	B	Diameter (mm) / Thread Type
CF-6CU-133T	CF1.33"(DN16)	17.00	15.75	8-32
CF-6CU-133M	CF1.33"(DN16)	17.00	15.75	M4
CF-6CU-275T	CF2.75"(DN40)	35.05	38.10	1/4-28
CF-6CU-275M	CF2.75"(DN40)	35.05	38.10	M6
CF-6CU-338T	CF3.38"(DN50)	42.50	50.80	5/16-24
CF-6CU-338M	CF3.38"(DN50)	42.50	50.80	M8
CF-6CU-450T	CF4.50"(DN63)	56.75	63.50	5/16-24
CF-6CU-450M	CF4.50"(DN63)	56.75	63.50	M8
CF-6CU-600T	CF6.00"(DN100)	75.80	101.60	5/16-24
CF-6CU-600M	CF6.00"(DN100)	75.80	101.60	M8



\*Note: SS 316LN Material Available on Request.

CF