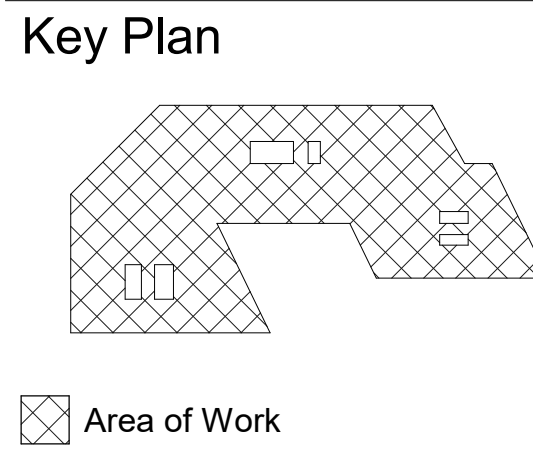
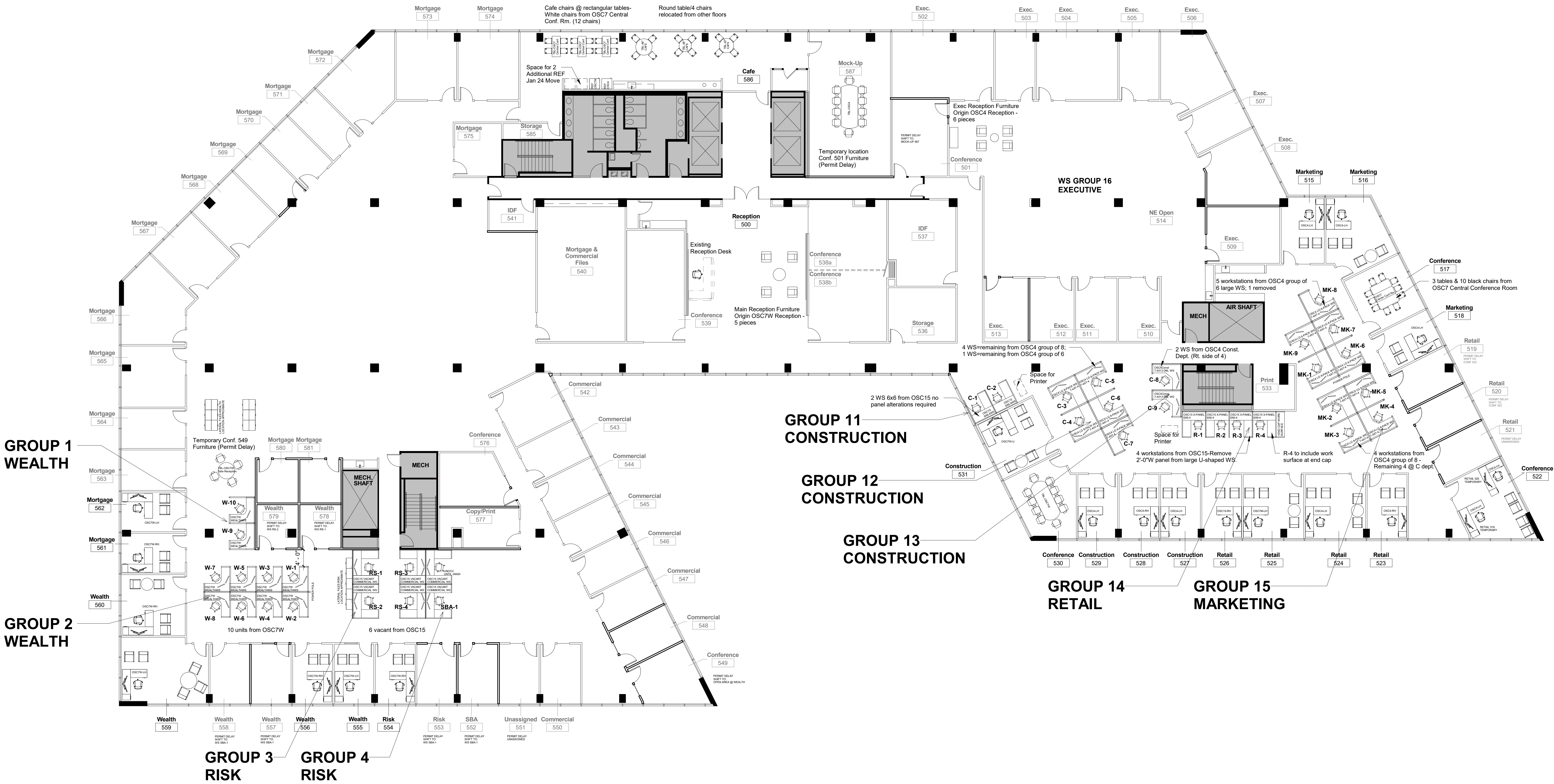



Conference Room Seat Counts:		Dept. Abbreviations:	
Conference 501:	10 Seats	C	Construction
Conference 517:	10 Seats	CM	Commercial
Conference 522:	8 Seats	E	Executive
Conference 530:	10 Seats	R	Retail
Conference 538a:	8 Seats	RS	Risk
Conference 538b:	8 Seats	SBA	Small Business
	(16 Seats Total in 538a/538b)	MG	Mortgage
Conference 539:	10 Seats at Table	MK	Marketing
	6 Seats Along Wall	W	Wealth
	(16 Seats Total)		
Conference 549:	4 Seats		
Conference 576:	8 Seats		
Totals:	76 Seats at Conference Tables		
	82 Seats Including Seats Along Wall in 539		


Two Ameris Center - 5th Floor - Swing Space



1 January17 Relocation Plan - TAC5 Swing Space 3/32" = 1'-0"

January 17 Relocation General Information

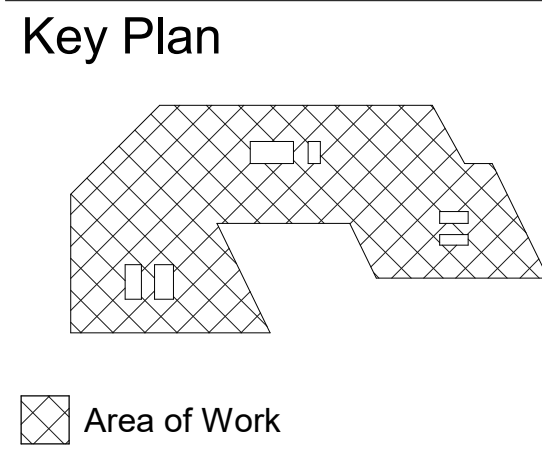
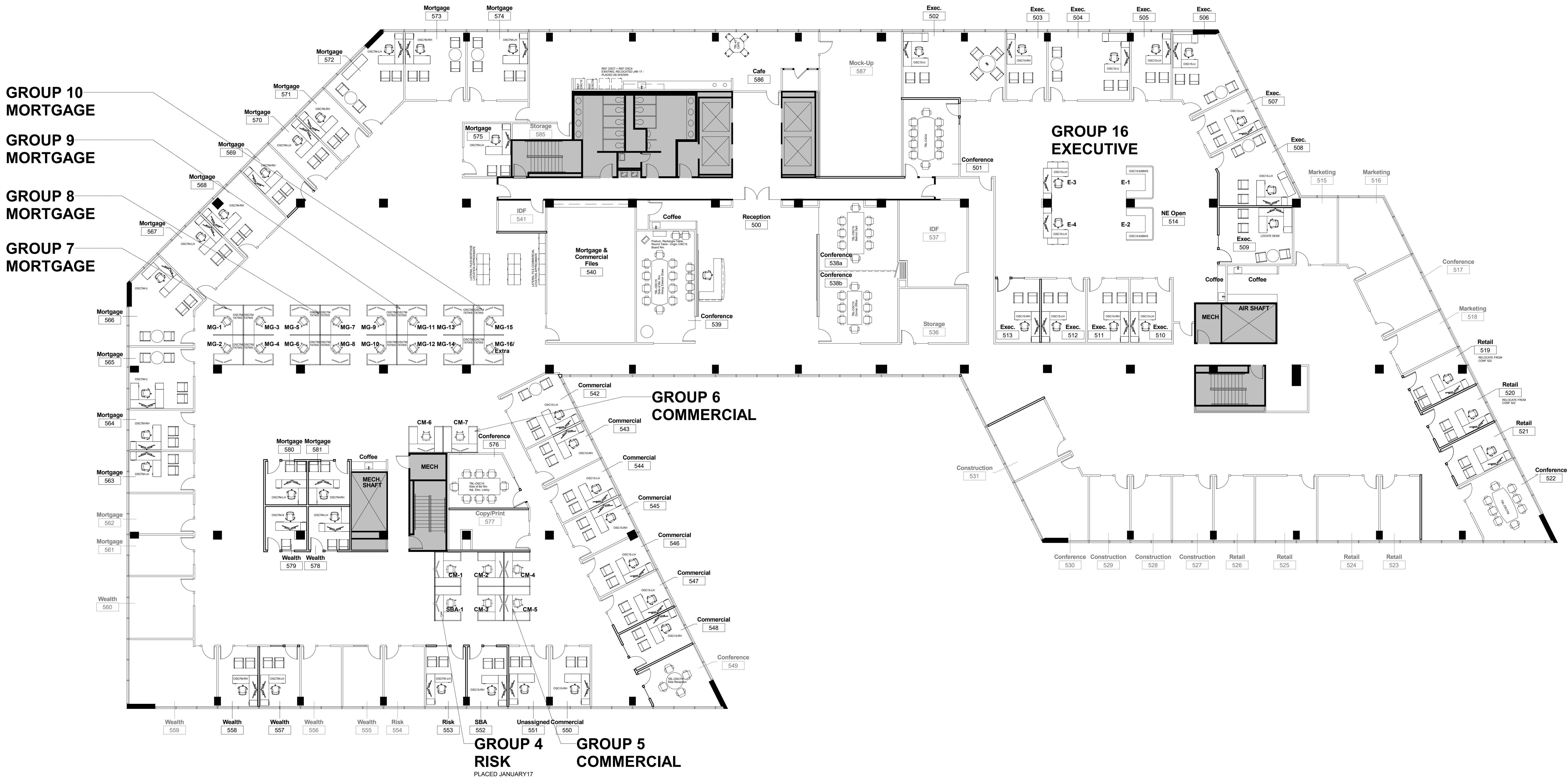
Relocation Contacts:		Notes:
Name	Info	
Walter Gray, Philpot Relocation	Cell: 770-934-4444 Email: walter.gray@philpotrelocation.com	
Melvin McClure On-Site Architect Contact/ Move Coordination	Cell: 270-331-1577 Email: mmclure@farrington.com	
Frank Farrington Architect	Cell: Email: ffarrington@farrington.com	
Building, Departments, Scope		
ID	Reference	
OSC	One Securities Centre	
4, 7M, 7W, 15	4th Floor; 7th Floor Mortgage; 7th Floor Wealth; 15th Floor;	
TSC	Two Securities Centre	<div>Room 501</div>
5	5th Floor - Swing Space	
ID	Department	Label Color-Files/Crates
C	Construction	
CM	Commercial	
E	Executive	
R	Retail	
RS	Risk	
SBA	Small Business	
MG	Mortgage	
MK	Marketing	
W	Wealth	

	Building Core - Out of Scope
	Room / Area in Scope of Work This Move Phase (Name/No. Printed in Black)
	Room 501
	Room / Area Not In Scope of Work This Move Phase (Name/No. Printed in Grayscale)
	Room 501
MK-3	Workstation ID - Department Abbreviation + Seat Number
OSCA-011 OSCA-00006 TEL-0000-000000	Furniture ID - Origin + Identifier

January 17 Relocation Inventory

Offices - Origin 4th Floor		Offices - Origin 7th Floor, Mortgage		Offices - Origin 15th Floor		Workstations	
Tag ID	Description	Tag ID	Description	Tag ID	Description	Tag ID	Description
OSC4-LH	Item: 6'-0" x 7'-0" Left-Hand Return Desk Origin: OSC 4th Floor Qty Used:	OSC7M-LH	Item: 6'-0" x 7'-0" Left-Hand Return Desk Origin: OSC 7th Floor, Mortgage Dept. Qty Used:	OSC15-LH	Item: 6'-0" x 7'-0" Left-Hand Return Desk Origin: OSC 15th Floor Qty Used:	OSC4-7X7WS	Item: 7'-0" x 7'-0" Workstation + Divider Origin: OSC 4th Floor - Right Side Qty Used: 2
OSC4-RH	Item: 6'-0" x 7'-0" Right-Hand Return Desk Origin: OSC 4th Floor Qty Used:	OSC7M-RH	Item: 6'-0" x 7'-0" Right-Hand Return Desk Origin: OSC 7th Floor, Mortgage Dept. Qty Used:	OSC15-RH	Item: 6'-0" x 7'-0" Right-Hand Return Desk Origin: OSC 15th Floor Qty Used:	OSC4-7X7WS	Item: 7'-0" x 7'-0" Workstation + Dividers Origin: OSC 4th Floor - Left Side Qty Used: 14
Offices - Origin 7th Floor, Wealth Mgmt.		OSC7M-U		OSC15-U		OSC7M-7X7WS	
Tag ID	Description	Item: 6'-0" x 8'-6" U-Shaped Desk Origin: OSC 7th Floor, Mortgage Dept. Qty Used:		Item: 6'-0" x 8'-6" U-Shaped Desk Origin: OSC 15th Floor Qty Used:		Item: 7'-0" x 7'-0" Workstation + Dividers Origin: OSC 7th Floor, Mortgage Dept. Qty Used:	
OSC7W-LH	Item: 6'-0" x 7'-0" Left-Hand Return Desk Origin: OSC 7th Floor, Wealth Mgmt. Dept. Qty Used:	OSC7M-S		OSC15-S		OSC7W-6X6WS	
		Item: 6'-0" x 2'-9" Single Span Desk Origin: OSC 7th Floor, Mortgage Dept. Qty Used:		Item: 6'-0" x 2'-9" Single Span Desk Origin: OSC 15th Floor Qty Used:		Item: 6'-0" x 6'-0" Workstation + Dividers Origin: OSC 15th Floor, Wealth Mgmt. Dept. Qty Used: 10	
OSC7W-RH	Item: 6'-0" x 7'-0" Right-Hand Return Desk Origin: OSC 7th Floor, Wealth Mgmt. Dept. Qty Used:	Miscellaneous: <ul style="list-style-type: none">OSC7W Conf. Rm. at Reception: Lg. Conf. Table, 10 Ch (to Conf.530);OSC7W Cafe: Round Table, 4 Ch, Refrigerator (to Cafe);OSC7W Conf. Rm. Left of Reception: Round Table, 4 Ch (to open area at Wealth until Permit, then to Conf.549)OSC7 Central: 6 Conf. Tables (3 to Cafe, 3 to Conf.517); 20 White Chairs (to Cafe); 10 Black Chairs (to Conf.517);OSC7W Reception: 4 Chairs, 1 Round Table (to Reception 500).		Miscellaneous: <ul style="list-style-type: none">OSC4 Conf. Rm: Lg. Table, 10 Ch (to Exec Area until Permit, then inside Conf.501);OSC4 Reception: 4 Chairs, 2 Tables (to Exec Area);OSC4 Cafe: Table, 4 Ch, Refrigerator (to Cafe);Files per Department: See Plan;		OSC15-6X6WS	
OSC7W-U	Item: 6'-0" x 8'-6" U-Shaped Desk Origin: OSC 7th Floor, Wealth Mgmt. Dept. Qty Used:					OSC15-6X7-6WS	
						Item: 6'-0" x 7'-6" Workstation Origin: OSC 15th Floor Qty Used: 6 @ Existing Config. Qty Used: 4 @ 2'-0" Panel Removed	

Swing Space Relocation Plan - January 17



2 5th Floor Swing Space - January 24 Move 3/32" = 1'-0"

January 24 Relocation General Information

Relocation Contacts:

Name	Info
Walter Gray, Philpot Relocation	Cell: 770-934-4444 Email: walter.gray@philpotrelocation.com
Melvin McClure On-Site Architect Contact/ Move Coordination	Cell: 270-331-1577 Email: mmcclure@farrington.com
Frank Farrington Architect	Cell: Email: ffarrington@farrington.com

Building, Departments, Scope

ID	Reference
OSC	One Securities Centre
4, 7M, 7W, 15	4th Floor; 7th Floor Mortgage; 7th Floor Wealth; 15th Floor;
TSC	Two Securities Centre
5	5th Floor - Swing Space

ID	Department	Label Color-Files/Crates
C	Construction	
CM	Commercial	
E	Executive	
R	Retail	
RS	Risk	
SBA	Small Business	
MG	Mortgage	
MK	Marketing	
W	Wealth	

Notes:

Room 501

Building Core - Out of Scope

Room 501

Room / Area in Scope of Work This Move Phase (Name/No. Printed in Black)

Room 501

Room / Area Not In Scope of Work This Move Phase (Name/No. Printed in Grayscale)

Room 501

Workstation ID - Department Abbreviation + Seat Number

Room 501

Furniture ID - Origin + Identifier

Room 501

Room / Area in Scope of Work This Move Phase (Name/No. Printed in Black)

Room 501

Room / Area Not In Scope of Work This Move Phase (Name/No. Printed in Grayscale)

Room 501

Workstation ID - Department Abbreviation + Seat Number

Room 501

Furniture ID - Origin + Identifier

January 24 Relocation Inventory

Offices - Origin 4th Floor		Offices - Origin 7th Floor, Mortgage		Offices - Origin 15th Floor		Workstations	
Tag ID	Description	Tag ID	Description	Tag ID	Description	Tag ID	Description
OSC4-LH	Item: 6'-0" x 7'-0" Left-Hand Return Desk Origin: OSC 4th Floor Qty Used:	OSC7M-LH	Item: 6'-0" x 7'-0" Left-Hand Return Desk Origin: OSC 7th Floor, Mortgage Dept. Qty Used:	OSC15-LH	Item: 6'-0" x 7'-0" Left-Hand Return Desk Origin: OSC 15th Floor Qty Used:	OSC4-7X7WS	Item: 7'-0" x 7'-0" Workstation + Dividers Origin: OSC 4th Floor Qty Used:
OSC4-RH	Item: 6'-0" x 7'-0" Right-Hand Return Desk Origin: OSC 4th Floor Qty Used:	OSC7M-RH	Item: 6'-0" x 7'-0" Right-Hand Return Desk Origin: OSC 7th Floor, Mortgage Dept. Qty Used:	OSC15-RH	Item: 6'-0" x 7'-0" Right-Hand Return Desk Origin: OSC 15th Floor Qty Used:	OSC7M-7X7WS	Item: 7'-0" x 7'-0" Workstation + Dividers Origin: OSC 7th Floor, Mortgage Dept. Qty Used: 16
Offices - Origin 7th Floor, Wealth Mgmt.		OSC7M-U	Item: 6'-0" x 8'-6" U-Shaped Desk Origin: OSC 7th Floor, Mortgage Dept. Qty Used:	OSC15-U	Item: 6'-0" x 8'-6" U-Shaped Desk Origin: OSC 15th Floor Qty Used:	OSC7W-6X6WS	Item: 6'-0" x 6'-0" Workstation + Dividers Origin: OSC 7th Floor, Wealth Mgmt. Dept. Qty Used:
OSC7W-LH	Item: 6'-0" x 7'-0" Left-Hand Return Desk Origin: OSC 7th Floor, Wealth Mgmt. Dept. Qty Used:	OSC7M-S	Item: 6'-0" x 2'-9" Single Span Desk Origin: OSC 7th Floor, Mortgage Dept. Qty Used:	OSC15-S	Item: 6'-0" x 2'-9" Single Span Desk Origin: OSC 15th Floor Qty Used:	OSC15-6X6WS	Item: 6'-0" x 6'-0" Workstation + Dividers Origin: OSC 15th Floor Qty Used:
OSC7W-RH	Item: 6'-0" x 7'-0" Right-Hand Return Desk Origin: OSC 7th Floor, Wealth Mgmt. Dept. Qty Used:	Miscellaneous:		Miscellaneous:		OSC15-6X7-6WS	Item: 6'-0" x 7'-6" Workstation Origin: OSC 15th Floor Qty Used: 6
OSC7W-U	Item: 6'-0" x 8'-6" U-Shaped Desk Origin: OSC 7th Floor, Wealth Mgmt. Dept. Qty Used:					OSC15-6X8WS	Item: 6'-0" x 8'-0" Executive Asst. Workstation Origin: OSC 15th Floor, Exec. Asst. Area Qty Used: 2

Swing Space Relocation Plan - January 24