

CPI Foundation

Increasing Readiness for Our Veterans, Our Infrastructure, Our National Parks



Project Profile: Battleship Row Fleet Moorings, Pearl Harbor

project Structural Repair: Infrastructure

objectives Military-to-Civilian Career Training, Historic Preservation, Infrastructure Advancement

team Active Duty Military Service Members

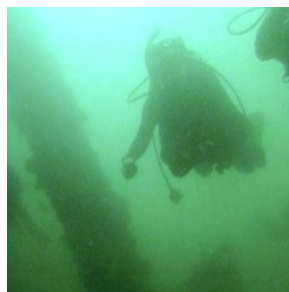
completed Ongoing

owner National Park Service

location Pearl Harbor National Monument, Oahu, Hawaii



Battleship Row Fleet Moorings



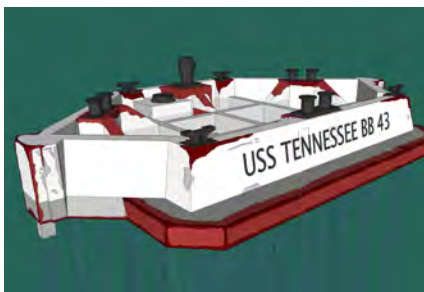
Underwater condition assessment



Assisting NPS on archaeology testing



Active duty military CPI team member



3D digital model documenting deterioration & battle damage



Pumping sand ballast out of mooring structure to allow inspection/repair



Exposed structure after sand removal



Concrete drilling to collect samples for chloride testing

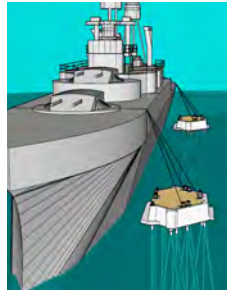
Project Highlights

- **Outcomes/Work Items:** Ongoing work to date includes Historic Structure Report writing & associated research, above & below water condition assessment, 3D digital modeling, assistance to NPS on archaeological testing, site specific safety plan, proposed repair project planning; theater building repairs
- **Special Considerations:** The historic Fleet Moorings and USS Arizona Memorial visually define Battleship Row, site of the Dec. 7, 1941 Pearl Harbor Attack; structures included in the Pearl Harbor National Memorial; CPI's program & partnerships engaging to help ensure Mooring structural durability; existing deteriorated conditions echo the effects of time, use, & environment on infrastructure throughout the U.S.

PROJECT PROFILE details Battleship Row Fleet Moorings, Pearl Harbor



Fleet Mooring historic construction photo



Moorings historically used in pairs to secure battleships (CPI model)



Active duty military CPI team member



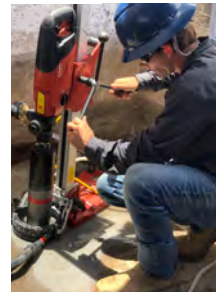
Safety first



CPI Dive Team



CPI active duty military team with visiting military leadership on Fleet Mooring, USS Arizona memorial in background



Vertical core drilling for material testing



Horizontal core drilling for material testing



CPI team member nearing civilian transition greeting potential industry employer

CPI FOUNDATION PROJECT & TECHNICAL CAPABILITIES

- Expert staff engage hands-on and manage teams of highly qualified and vetted members of our active duty armed forces preparing for transition to civilian careers
- Self-perform concrete, wood, steel, & composite construction as design-build projects coordinated with owners; larger projects include self-performed work in addition to managing consultants & sub-contractors
- Repair, new construction, and historic preservation projects in urban, remote, wilderness, and marine areas include historic structures & site features; visitor & utility facilities; trails; water utility systems; projects that improve access, health, safety, & recreation, including ADA access; roads; bridges; tunnels; and parking lots
- Leader in advancing innovative technological solutions to structural and infrastructure challenges that promote durability, sustainability, and compliance with preservation, environmental, & other regulations

The CPI Foundation is a proven public/private partnership program working with the U.S. Departments of Defense and Interior, and with industry companies across the country. The program benefits the United States and its taxpayers by combining the strengths and needs of three national concerns: our military veterans, our infrastructure, and our national parks. Helping avoid potential military-to-civilian transition pitfalls, CPI offers career preparation & placement and hands-on training programs for transitioning active duty service members at all levels from all service branches while completing construction, repair, deferred maintenance, and safety/access projects in national parks and public lands.