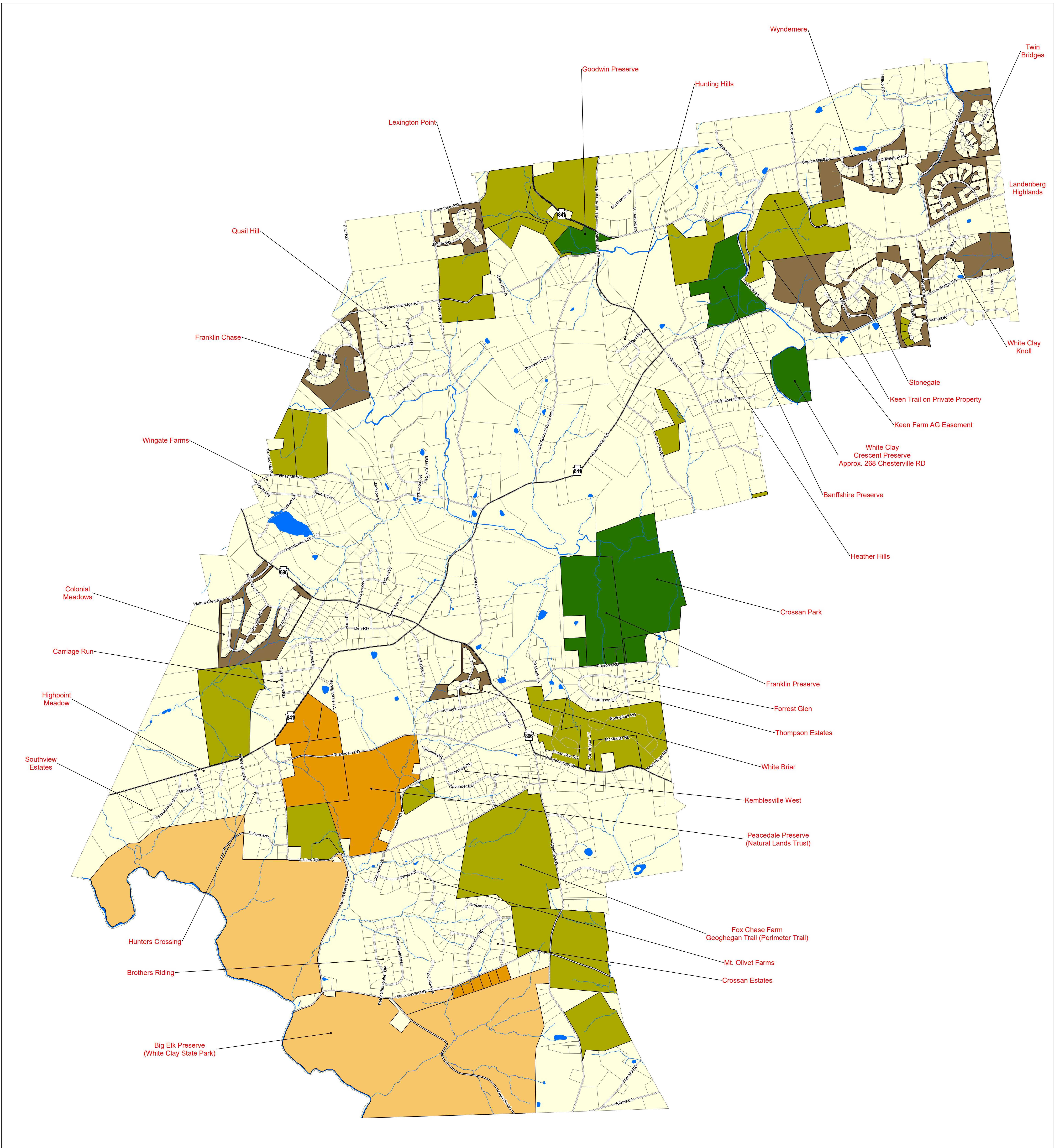


Conserved Lands

Franklin Township



NOTES: Not for engineering purposes.
Address data source: Chester County GIS Department.
Landbase Source: Planimetric features have been compiled to meet the National Map Accuracy Standard of 1:24,000 scale mapping using first order, fully analytical digital stereoplotters, from aerial photography dated Spring, 2006, controlled analytically from ground points captured using first order GPS equipment. Planimetric coordinates were based on the PA State Plane Coordinate System South Zone and North American Datum 1983.
Copyright (c) 2005, County of Chester, PA. All Rights Reserved.
LIMITATION AND LIABILITY OF USE: This map was digitally compiled for internal maintenance and developmental use by the County of Chester, PA to provide index to parcels and for other reference purposes. Parcel lines do not represent actual field surveys of premises. County of Chester, PA makes no claims as to the completeness, accuracy or content of any data contained herein, and makes no representation of any kind, including, but not limited to, the warranties of merchantability or fitness for a particular use, nor are any such warranties to be implied or inferred, with respect to the information or data furnished herein.
No part of this document may be reproduced, stored in a retrieval system or transmitted in any form or by any means, electronic, mechanical, photocopying, recording or otherwise, except as expressly permitted by the County of Chester, PA.

0 450 900 1,800 2,700 3,600 4,500 Feet
Date Prepared: November 29, 2018

Legend	
Major Roads	Easements - Privately Owned (969 Acres)
Rivers and Streams	Home Owner Association Land (313 Acres)
Roads	Land Conservancy Owned - Accessible to the Public (220 Acres)
Parcel Boundaries	State Owned - Accessible to the Public (831 Acres)
Ponds and Lakes	Township Owned - Accessible to the Public (326 Acres)