



NEKBA 2025 Year Two and Beyond

Queens, Swarms & Nucs

Kristi Sanderson
EAS Master Beekeeper
Midwest Master Beekeeper



We Want Queens Early

Why

- Our hive has a failing queen
- The hive is queenless
- Need to make splits
- We can't raise queens as early in Kansas as we may want them
 - Remember we need drones also



Bad Queen or Laying Workers



Ordering Queens

- Call supplier as soon as you know you need queens
 - Pickup at your carriers local location
 - Have shipped a next day service
- If ordering a large amount call as early as January
 - Get your bee buddies together to help on costs with a larger order



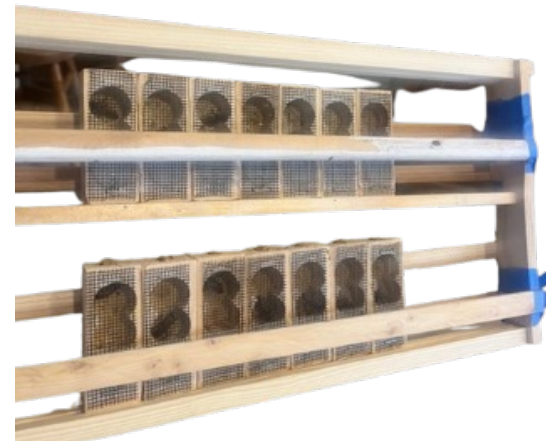
Care Once Queen Arrives

- Give her a drink of water
- Don't give her honey
- If not using right away keep at room temperature out of the sun
- Don't let her get to hot or to cold



Banking Queens

- Hold queens in a more natural environment
- Must remove all attendants from queen cage
- Have special frame to hold queen cages



In the Queen Bank

- Capped brood almost ready to emerge
- Nurse bees
 - Shake bees off of open brood when making up a queen bank
- Frame of honey and pollen or a frame feeder



Queen Introduction

- Remove attendants from cage
- Place queen cage between frames of open brood face down
- Do not remove any corks
- Use duct tape to cover exposed candy if cork not available
- Feed 1-1 sugar syrup



Release Queen 3-5 Days

- Release on a warm sunny day
- Check for started queen cells before releasing queen
- Observe how bees are reacting to queen through the cage
- Continue feeding 1-1 sugar syrup after releasing



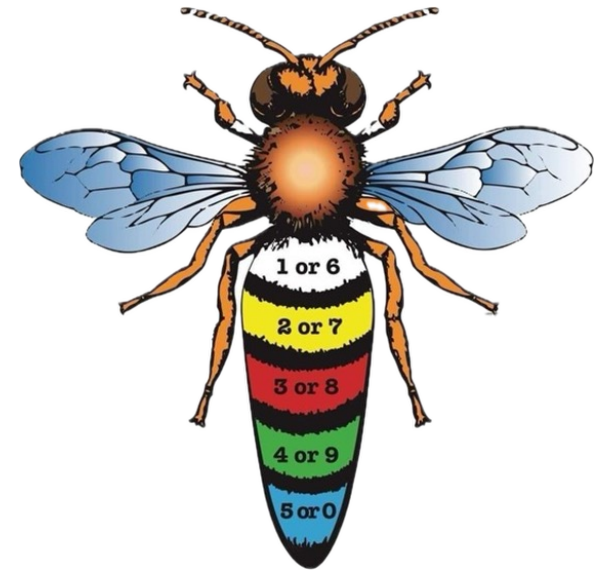
Check for acceptance

- 5-7 days after releasing check for acceptance
- Look for queen cells again
- Look for eggs
- Look for the queen and mark if all is well



Why Mark

- Easier to find
 - Helps in avoiding accidental injury
- Know age
- Will know if your Queen has been replaced
 - Swarming
 - Supersedure



Will You Raise Good Bees

Establish A Routine

- Use small amounts of smoke
- Check under top and inner covers



Have A Plan

- Break apart brood boxes
 - Keeps queen from running down while going through top box
 - Go through frames one by one
 - Place looked at frames tight against



Most Likely Won't be Here

- Sealed Frames of Honey
- Cells Containing Pollen
- Frames of Foundation
- Full Brood Frames



Most Likely Areas

- Emerging brood
 - In areas where new “fuzzy” bees are present
 - Will see new bees hatching out
 - Where there are empty cells

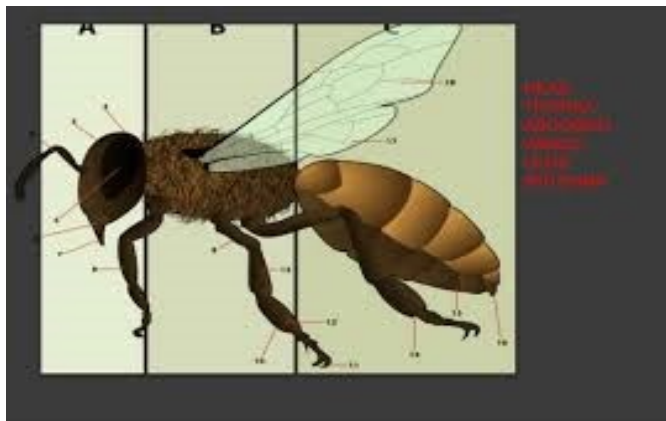


Eye Catching Things

- Bald Thorax
- Longer Abdomen
- Her Legs



Mark Her on the Thorax



Marking

- Push up tubes
- Hold with fingers
- Pin on frame



Marking Options

- Paint Pens
- White Out
- Model paint w/ match stick



Making Nucs and Splits

- Why
 - Replace winter losses
 - Increase colony numbers
 - Sell for extra income



Feed for faster colony growth

- Sugar water 1 to1 when day time temps reach 50°
- Make sure there is good pollen flow or supplement with protein patties



Use mated queens

- Order early
- Have delivered next day service
- Check food & water upon delivery



Going through the parent hive

- Separate brood boxes
- Look for queen as you evaluate frames of brood
- Evaluate frames one after the other from side to side in the brood boxes
- Isolate queen in a clip once she is found
- Leave brood in middle of bottom box
- Release queen once all extra brood has been removed
- Replace removed frames with empty drawn comb or frames of foundation



What If I Don't Find the Queen

- Set up bottom box as if you have found the queen
- Set a 2nd empty hive body on
- Shake bees off of frames of brood you will be taking



Shaken Frames of Brood

- Place a 3rd hive body above a queen excluder
- Leave a little space between each frame
 - Allows for more bees
- Put lid on hive let sit
- Bees will come up through excluder to care for the brood



If You Don't want to Shake Bees

- Place queen excluder between brood boxes and wait 3 days
- Increases your odds of finding her



General rule of thumb

- Before April 15 leave 3 full frames of brood behind
- After April 15 leave 4 full frames of brood behind



In the Parent Hive

- Leave brood in the middle of the bottom box with available honey on the sides
- Replace removed frames with empty drawn comb or frames of foundation
- Release queen once all extra brood has been removed



Collecting brood

- Collect from several hives
- Collect enough bees
- Don't let bees and brood overheat



Move bees & brood away from parent colonies

- Make nucs at least 3 miles away
 - Consider starting a nuc yard
 - Make nucs with brood from previous yard in next bee yard
- Make nucs convenient to get to
 - Will need feed
 - Will be releasing & checking queen acceptance



In the nuc box

- Young mated queen
- Frame of pollen
- Frame of honey
- 2-3 frames of brood of varying ages



Queen Acceptance

- Feed sugar water 1part sugar to 1 part water
- Leave queen confined in cage 3-5 days
- Check for queen cells before releasing queen
- Observe how bees are reacting to queen through the cage



Check for acceptance

- 5-7 days after releasing check for acceptance
- Look for queen cells again
- Look for eggs
- Look for the queen and mark if all is well



What to do?

Are any sealed?

-If so close it up and let nature it's course



Signs of a virgin Queen



No evidence of queen

- Look & listen for a virgin
- Look for a queen cell that a queen has emerged from
- Judge temperament of the bees
- Add frame with eggs and see if queen cells are started before introducing another queen



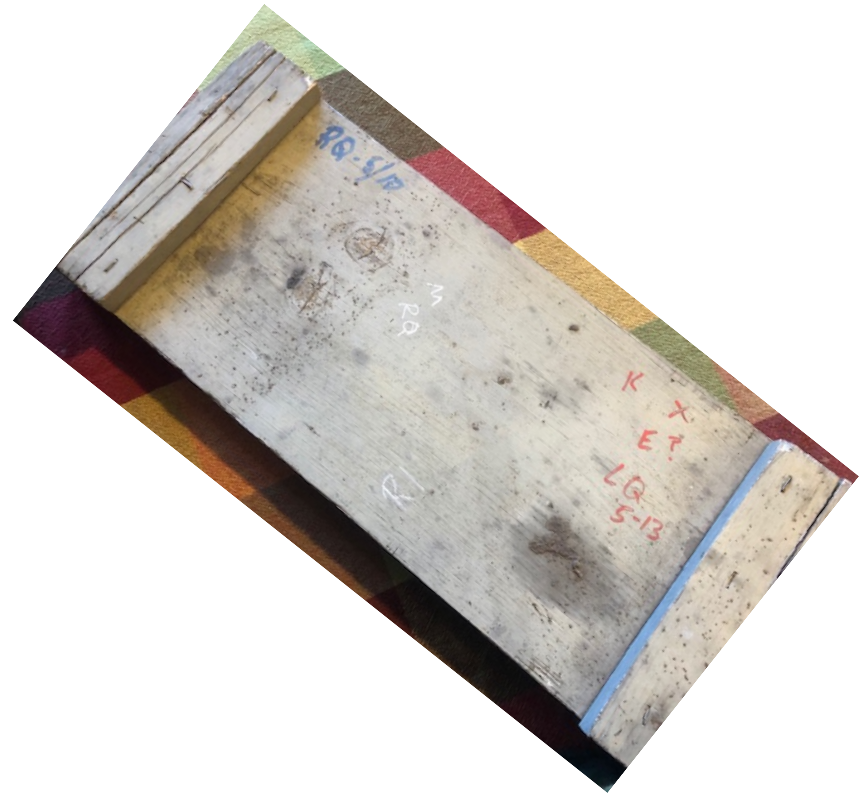
Virgin Queen

- Smaller until mated
- 4 days till mature enough to mate.
- At least 4 days after mating till egg laying starts and can be up to 3 weeks.
- Mates with 12-14 drones in a DCA up in the air.



Record Keeping

- This is how I do it
 - Paint pen
 - On top of lid of nuc



Questions

Sweet Prairie Honey
Mentoring Service
Kristi Sanderson
913-768-4961
Sandersonk09@gmail.com



Nucs and Queens For Sale



Banking Queens

- Remove attendants
- Make a queen less nuc
- Frame of honey
- Frames of emerging brood on either side of queen frame



Finding and Marking the Queen

