

Rabbit Anti-Claudin 7 Polyclonal: RC0154, RC0154RTU7

Intended Use: For Research Use Only

Description: Claudin-7, encoded by the CLDN7 gene, is a member of the claudin family. Claudin-7 is a transmembrane protein involved in the formation of tight junctions between epithelial cells.¹ The Claudin family of proteins are involved in critical roles of cellular polarity, signal transductions, and have been implicated in the pathogenesis of various human neoplasms including chromophobe renal cell carcinoma. Claudin-7 could be a useful immunohistochemical marker for the distinction and identification of chromophobe renal cell carcinoma. Claudin-7 expression is down-regulated in colorectal cancer (CRC) and lung cancer tissues and loss of Claudin-7 is associated with the degree of cancer cell differentiation and metastasis. While Claudin-7 downregulation was found in Esophageal, Head/Neck, and Prostate Cancers, overexpression of Claudin-7 is found in many Ovarian Cancers and may also lead to increased tumor invasiveness.

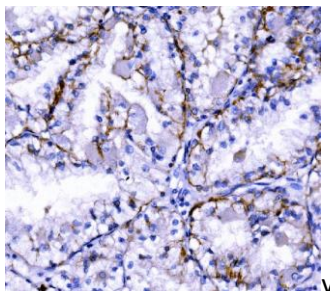
Specifications

Clone: Polyclonal
 Source: Rabbit
 Isotype: IgG
 Reactivity: Human
 Immunogen: E.coli-derived human Claudin 7 recombinant protein (Position: F92-V211)
 Localization: Membrane
 Formulation: Antibody in PBS pH7.4, containing BSA and ≤ 0.09% sodium azide (NaN₃)
 Storage: Store at 2°- 8°C
 Applications: IHC, ELISA, Flow Cyt., ICC/IF, WB
 Package:

Description	Catalog No.	Size
Claudin 7 Concentrated	RC0154	1 ml
Claudin 7 Prediluted	RC0154RTU7	7 ml

IHC Procedure

Positive Control: Chromophobe renal cell carcinoma
 Concentrated Dilution: 25-100
 Pretreatment: Tris EDTA pH9.0, 15 minutes using Pressure Cooker, or 30-60 minutes using water bath at 95°-99°C
 Incubation Time and Temp: 30-60 minutes @ RT
 Detection: Refer to the detection system manual
 * Result should be confirmed by an established diagnostic procedure.



FFPE human renal clear cell carcinoma stained with anti-Claudin 7 using DAB

References:

1. Single-Chromosomal Gains Can Function as Metastasis Suppressors and Promoters in Colon Cancer. Vasudevan A, et al. Dev Cell 52:413-428.e6, 2020.
2. Nuclear expression of claudin-3 in human colorectal adenocarcinoma cell lines and tissues. Tokuhara Y, et al. Oncol Lett 15:99-108, 2018.

Doc. 100-RC0154
Rev. A