



GLENDALE YOUTH ORCHESTRA TIMPANI AUDITION EXCERPTS

Each applicant must prepare the following orchestral excerpts:

BEETHOVEN Symphony No. 7: 1st mvt, mm. 89–110; 4th mvt, mm. 409–end

BEETHOVEN Symphony No. 9: 1st mvt, 18 measures before Letter S to end

HINDEMITH Symphonic Metamorphosis: 2nd mvt ALL

TCHAIKOVSKY Symphony No. 4: 1st mvt, 2 measures before Letter T to Letter U

Ludwig van Beethoven
Symphony No. 7 in A Major, Op. 92

Timpani

in A E

Poco sostenuto $\text{♩} = 69$

18 *f* 1 *f* 1 *f* 6 *ff* Fl. I

38 *p* 1 *ff* 2 3 4 Viol. I

63 *dim.* 5 6 7 8 8 *ff* 1 7 *ff* Viol. I

93 *ff* *pcresc.*

103 *ff* 21 *tr* C

132 *f* 11 *ff* 14 Fag. I Ob. I Fl. I E

155 *ff* 2 *ff* 3 1

171 *ff* 2 2 2 14 Fl. I, Ob. I, Fag. I F

204 6 1 32 Viol. I G

254 *ff* *tr* *tr* H

263 9 *f* *piu. f* *ff* I

281 1 1

292 12 Clar. I

Beethoven — Symphony No. 7

Timpani

5

234 1 2 3 4 5 6 1. 2.

sf sf sf sf sf sf sf

246 *ff ff*

257

271 1 2 3 4 5 6

284 **G** 3 7 6 8

f f f f f f f f

H

318 1 2 3 4 5 6 7 8 9 10 11 12

p cresc. poco a poco - - - - - ff sf sf sf sf ff sf sf

340 1 1

sf sf sf sf sf sf sf sf G. P. G. P.

357 **I** 9 Viola Viol. II Viol. I 2 11 Viol. I

f sf

388 5 1 1 1 1 1 1 1

f f f f f f f f Viol. II

409 **K** 1 1

f f sempre più f ff

423 1 2 3

433 4 5 6 7 8 1 2 3 4 5 6 **L** 1 2

fff sf sf sf sf p cresc. -

448 3 4 5 6 7 8 1 2 3 4 5 6

fff sf sf sf sf sf

464 *sf ff sf sf sf*

Beethoven — Symphony No. 9

Timpani

3

402 N

410 3

422 O 12 Fl. I P

441 8 Fl. I P *cresc.*

458 1 *cresc.*

467 Q 1 2 3 4 5 6 7

478 *cresc.*

487 1 R *cresc.*

496 *p cresc.* 1 *Fag. I rit.*

507 *a tempo* 1 *rit.* *a tempo* *Viol. I*

517 *cresc.*

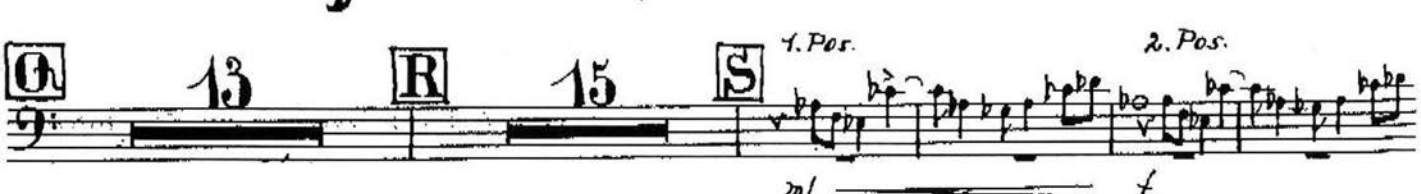
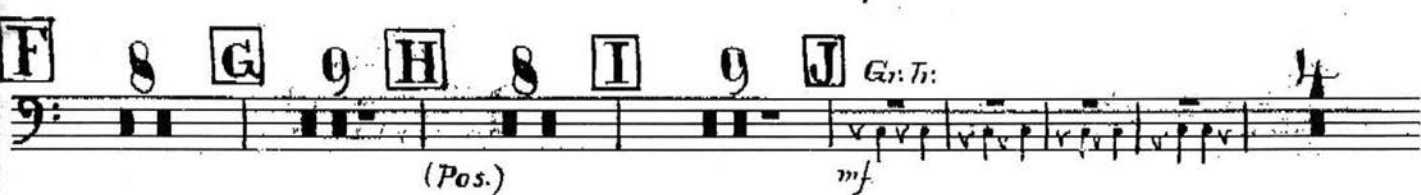
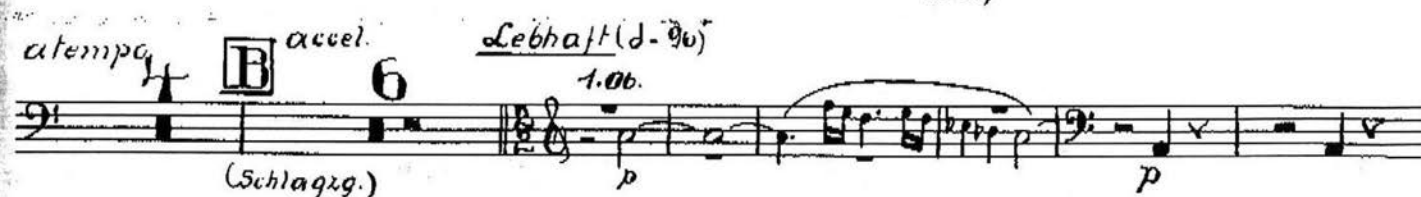
525 *f* *più f*

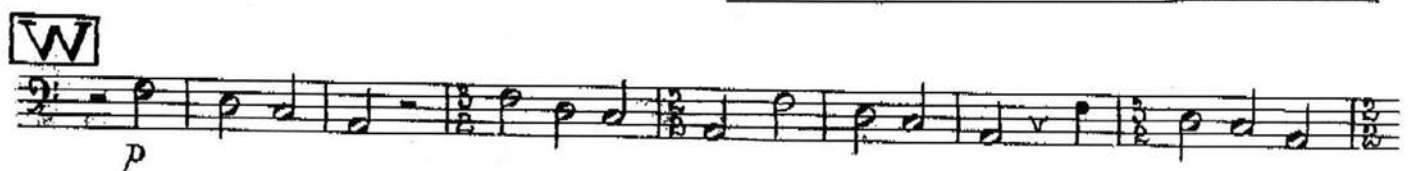
531 S *sempre ff* *tr* *sempre ff*

540 *tr* *sf* *ff*

Turandot, Scherzo

Moderato (♩ = 132)





Tchaikovsky — Symphony No. 4 in F Minor, Op. 36

4

Pauken

Ben sostenuto il tempo precedente

