

MOTOR STARTER

Explosionproof Motor Starter/Protector

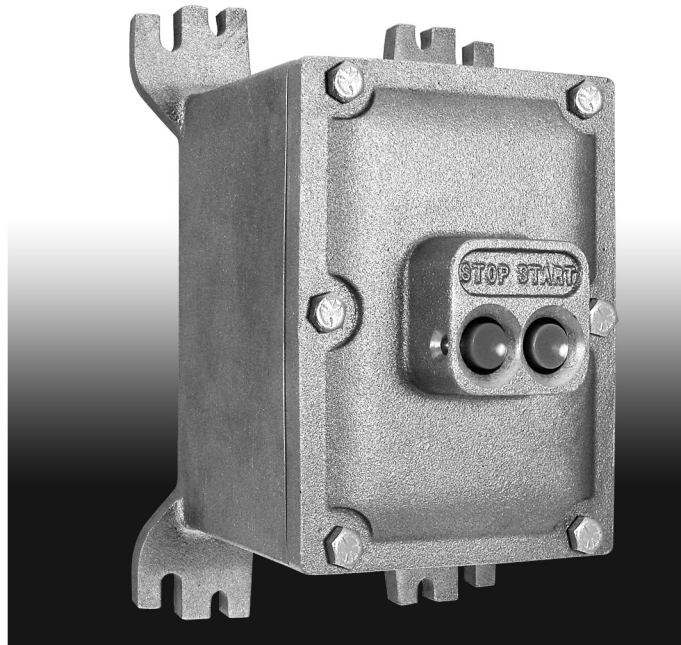
FEATURES

Starter Enclosure:

- Versatile mounting footprint makes installation in any application fast and easy
- Lightweight, corrosion resistant, copper-free aluminum alloy body (0.3% max. copper content)
- Red and green pushbuttons for easy start/stop operation
- Bolted flange design provides clear access to internal components
- Durable cast-on lugs cannot get lost
- Watertight 'O' ring for NEMA 4X applications

Motor Starter:

- Cutler Hammer Type XTPB Manual Motor Starter
- Range of sizes up to 25 amps
- Easy to operate pushbutton actuation
- Current setting dial
- Phase loss protection
- Snap-on accessories



Part Number Build

Part # **XIFC040604 N4 15021 1 AC**

Base Catalog Number

Starter Type Suffix

Options

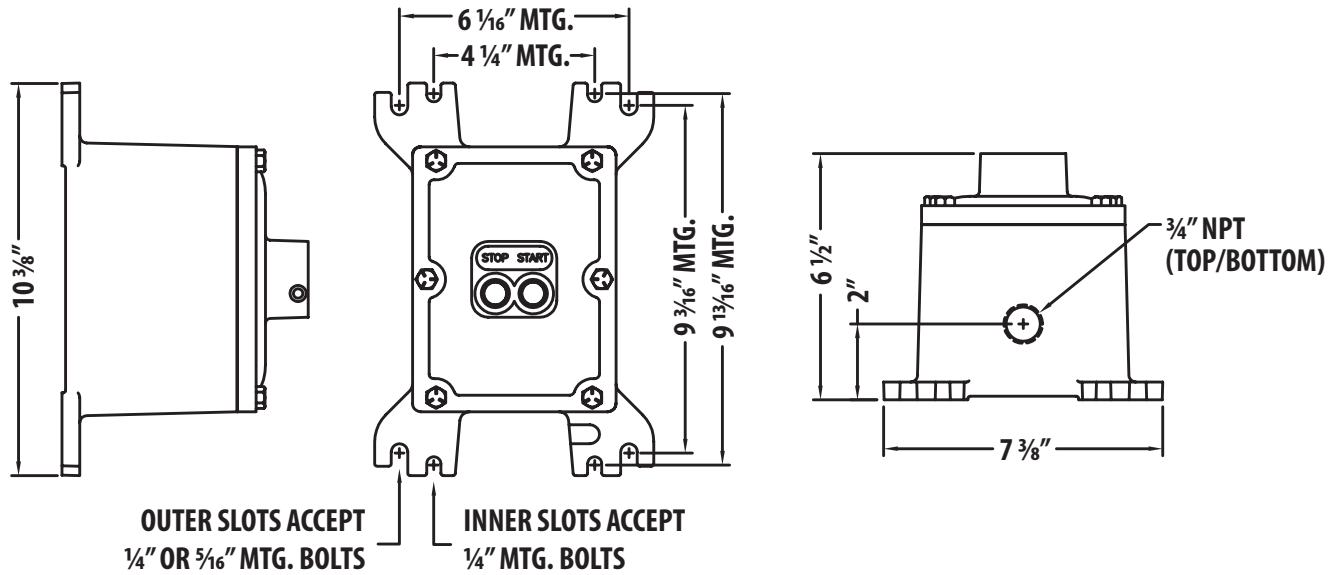
- Auxiliary Contacts (1NO, 1NC) - AC
- Shunt Trip - ST1
- Under Voltage Release - UV1
- Breather/Drain Installed in Bottom - EE
- Lockout Device on Pushbutton - LD

Certifications

Class I, Groups C, D
 Class II, Groups E, F, G
 UL Standard 1203 (Classified)
 CSA Standard C22.2 No. 30
 NEMA: 7CD, 9EFG



MOTOR STARTER



EXPLOSIONPROOF
Motor Control

Maximum Motor Ratings					Maximum UL Horsepower				Rated Uninterrupted Current	Current Range	Magnetic Release	Starter Part #	Suffix
3-Phase (Max kW rating)					3-Phase								
220-240V	380-415V	440V	500V	660-690V	200V	240V	480V	600V					
-	-	-	-	-	-	-	-	-	-	-	-	NO STARTER	NS
-	-	-	-	.06	*	*	*	*	.16	0.10 - 0.16	2.2	XTPBP16BC1	1
-	.06	.06	.06	.12	*	*	*	*	.25	0.16 - 0.25	3.5	XTPBP25BC1	2
.06	.12	.18	.25	.25	*	*	*	*	.4	0.25 - 0.4	5.6	XTPBP40BC1	3
.09	.25	.25	.37	.55	*	*	$\frac{1}{2}$	$\frac{1}{2}$.63	0.4 - 0.63	8.8	XTPBP63BC1	4
.12	.25	.25	.37	.55	*	*	$\frac{1}{2}$	$\frac{1}{2}$	1	0.63 - 1	14	XTPB001BC1	5
.25	.55	.55	.75	1.1	*	*	$\frac{3}{4}$	1	1.6	1 - 1.6	22	XTPB1P6BC1	6
.37	.75	1.1	1.1	1.5	$\frac{1}{2}$	$\frac{1}{2}$	1	$1 \frac{1}{2}$	2.5	1.6 - 2.5	35	XTPB2P5BC1	7
.75	1.5	1.5	2.2	3	1	1	2	3	4	2.5 - 4	56	XTPB004BC1	8
1.1	2.2	3	3	4	$1 \frac{1}{2}$	$1 \frac{1}{2}$	3	5	6.3	4 - 6.3	88	XTPB6P3BC1	9
2.2	4	4	4	7.5	3	3	$7 \frac{1}{2}$	10	10	6.3 - 10	140	XTPB010BC1	10
4	7.5	9	9	12.5	3	5	10	10	16	10 - 16	224	XTPB016BC1	11
5.5	9	11	12.5	15	5	5	10	15	20	16 - 20	280	XTPB020BC1	12
5.5	12.5	12.5	15	22	5	$7 \frac{1}{2}$	15	20	25	20 - 25	350	XTPB025BC1	13

*In this range, calculate motor rating according to rated current. Specified values to NEC Table 430.250.