



Rubber Track

Trackman®

## Continental ContiTech Trackman® Rubber Track

Replacement Tracks for John Deere®, Case IH Quadtrac® and AGCO Challenger® Tractors

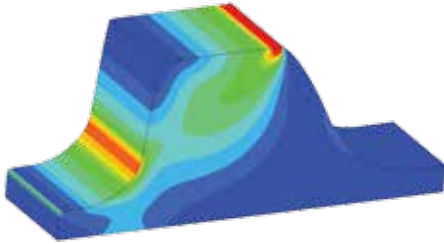
[www.contitech.us](http://www.contitech.us)

**ContiTech**

# We Put it Through the Paces Before it is Put on the Ground

When you choose Continental ContiTech Trackman® Rubber Track, rest assured that the track meets application requirements. To prove their reliability and durability, they undergo extensive, state-of-the-art FEA, field and lab testing. That is why so many customers trust Trackman® Rubber Tracks to keep them moving, in the field and beyond.

To further ensure that our tracks consistently meet your expectations, they are produced in facilities recognized for their quality and certification standards. All of our production facilities are ISO 9001 approved and have ISO 14001 Environmental Management Systems certifications.

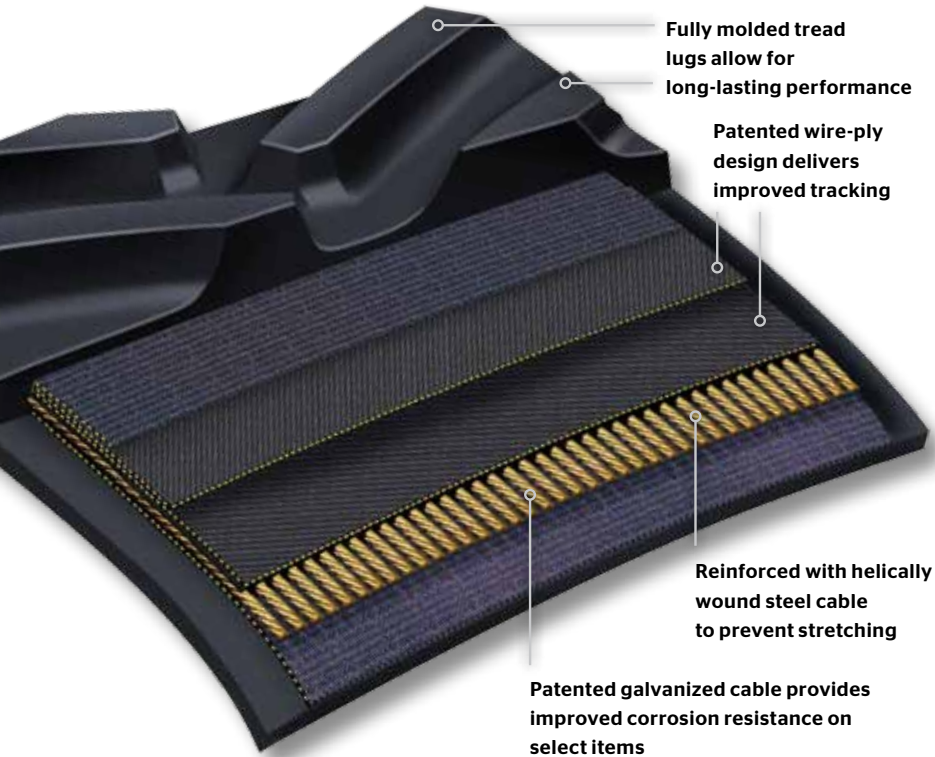


Non-Linear Finite Element Analysis (FEA)



# The Trusted Source for the Toughest Track

Trackman® Rubber Track products by Continental ContiTech



Fully molded tread lugs allow for long-lasting performance

Patented wire-ply design delivers improved tracking

Reinforced with helically wound steel cable to prevent stretching

Patented galvanized cable provides improved corrosion resistance on select items

This replacement track lineup provides a complete agricultural track offering that focuses on a low cost per hour of operation.

No matter where your brand loyalties lie, Trackman has it covered. If you are driving a select John Deere®, Case IH Quadtrac® or AGCO Challenger® tractor, there is a replacement track that meets the application and challenges. That is how we are tracking with you.

**Trackman**  
Rubber Track Construction

# Progress You Can Track

We do not just rely on 60-plus years of heavy-duty track experience to provide the construction quality and technological innovation your equipment demands. We draw upon 140-plus years of history in the rubber compounding industry, as well as knowledge and expertise gathered from the Continental ContiTech portfolio of products.



Across the company, we continually share insights to bring you the best products possible

- › The abrasion-resistance and reinforcement structure of our conveyor belts has taught us how to increase the durability of our carcass design.
- › The positive drive technology we developed for our Continental Elite® belt, tested every Sunday in the professional racing circuit, helped us build our positive drive rubber tracks - an industry first.
- › Our experience in air springs led to an innovation in our ARMORLUG® technology, which demonstrated a 23% track service life improvement in positive drive scraper applications.

# Demanding Applications are Our Specialty

For more than 65 years, we have been the leader in track manufacturing and technology for combat vehicles. Extensive testing on the U.S. Army's proving grounds has led to innovations in high-performance compounds, unsurpassed mobility and longer life in both hot and cold environments. This knowledge is then applied to the development of new Continental ContiTech rubber track applications. If it is good enough for them, it is tough enough for you.

## Our warranty is on track with your needs

In accordance with the Continental ContiTech Trackman® Rubber Track warranty, the track is covered against material and/or workmanship defects.

For complete warranty information, contact your Rubber Track Dealer or visit our website at [www.contitech.us/rubbertrack](http://www.contitech.us/rubbertrack).

Trackman



# ContiTech

## Contact

ContiTech AG  
NAFTA Headquarters  
703 S. Cleveland Massillon Road  
Fairlawn, OH 44333-3023 U.S.A.  
1-877-394-0482  
FAX 1-800-525-0910  
trackinquiries@contitech.us

## Germany

+49 (0)511 938 02  
mailservice@contitech.de

[www.contitech.us](http://www.contitech.us)



## ContiTech. Engineering Next Level

As a division of the Continental Group, ContiTech is a recognized innovation and technology leader in natural rubber and plastics. As an industry partner with a firm future ahead of us, we engineer solutions both with and for our customers around the world. Our bespoke solutions are specially tailored to meet the needs of the market. With extensive expertise in materials and processes, we are able to develop cutting-edge technologies while ensuring we make responsible use of resources. We are quick to respond to important technological trends, such as function integration, lightweight engineering and the reduction of complexity, and offer a range of relevant products and services. That way, when you need us, you'll find we're already there.

Trackman® and Elite® are registered trademarks of Continental ContiTech. Challenger® is a registered trademark of Caterpillar, Inc. and used under license by AGCO Corporation. John Deere® is a registered trademark of Deere and Company. Case IH and Quadtrac® are registered trademarks of CNH America LLC.

The content of this publication is not legally binding and is provided as information only. The trademarks displayed in this publication are the property of Continental AG and/or its affiliates.  
Copyright © 2014 ContiTech AG. All rights reserved.  
For complete information go to: [www.contitech.de/discl\\_en](http://www.contitech.de/discl_en)