

Finishes for Casegoods & Table Tops

Smooth - Seamless High Performance Laminate Options

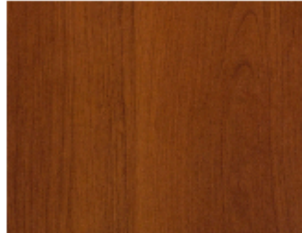
Natural 3DL has a smooth, classic finish and timeless color range. Great for writing surfaces, it's a favorite for Medical and Hospitality furniture where cleanability and simplicity matter.



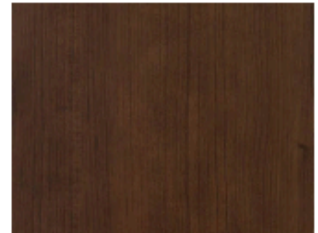
Windsor Mahogany | WMY



Warm Honey | WMH



Hayward Cherry | HCY



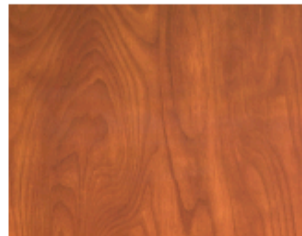
Shaker Cherry | CYB



Solara Oak | SOK



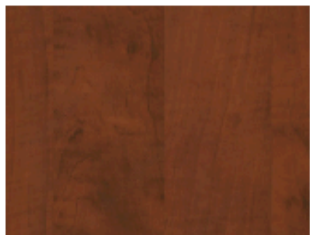
Colonial | COL



Wild Cherry | WCH



Ganache | GAN



Summer Flame | SFL



Norway | NWY



Textured - Seamless High Performance Laminate Options

Deeply embossed to mimic real wood, Textured 3DL is ideal for modern design—especially in Healthcare and Hospitality settings. Its durable, easy-to-clean surface performs well across many applications.



Aria | ARA



Ember | EMB



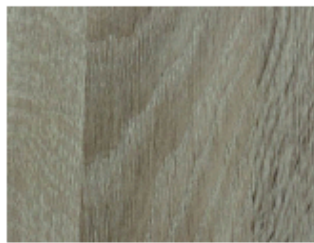
Bearwood | BWD



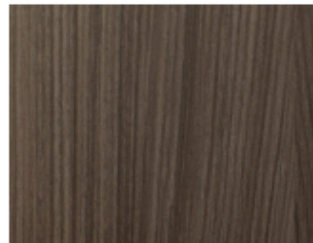
Pewter Pine | PWN



Hemlocks Grey | HGY



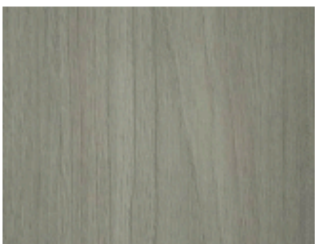
Rustik | RTK



Driftwood | DWD



Charleston Oak | COK



Elmwood | EWD



Porch Swing | PRS



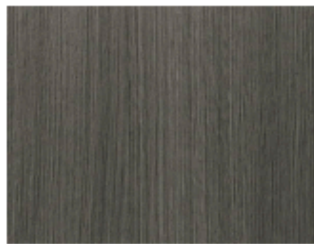
Shiplap | SHP



Silver Birch | SVB



Sterling | STG



Williamsburg Oak | WOK



Natural Casella Oak | NCO

ProvidersPlus

877-533-9626 | www.providersplusinc.com

Stone - Seamless High Performance Laminate Options

Stone-look 3DL offers the aesthetic of real stone with less cost and weight. It's durable and design flexible, making it ideal for tabletops and other flat-surface applications.



Calcutta | CCW



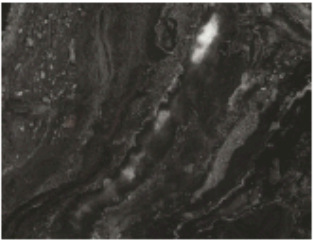
Sandstorm 2 | SS2



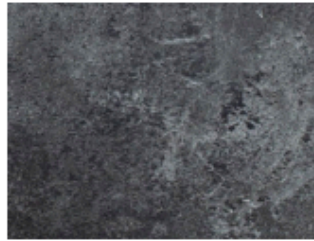
Gemstone Alpine | GSA



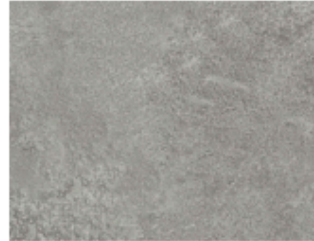
Milana Tan Marble | MTM



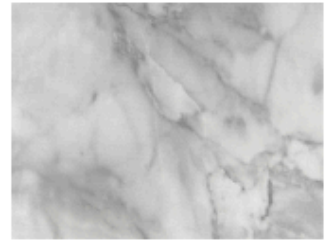
Evening Storm 2 | ES2



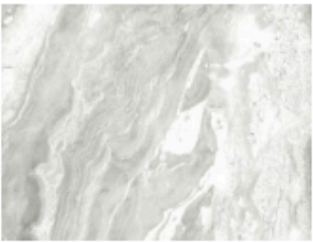
Rock Ash | RAS



Rock Concrete | RCO



Rome Arabescato | RAM



Snowstorm | SNS



Rome White Marble | RWM



Calcutta | CCW

ArmorHD - Seamless High Performance Laminate Options

ArmorHD is 33% thicker than standard 3DL, offering unmatched durability for high-use areas. Its seamless, fully wrapped finish resists impact, moisture, and bacteria—ideal for Medical, Hospitality, and Commercial environments. Designed for long-lasting performance without sacrificing visual appeal.

Note: Adds 15% to the cost



Ceramic Concrete | CCO



Ceramic Stone Gray | CSG



Ceramic Snow White | CSW



Solid Cashmere Black | SCB



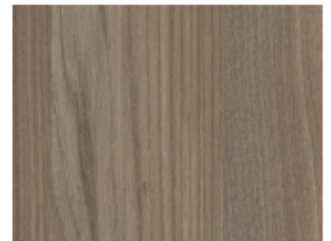
Monaco | MON



Joy | JOY



Escape | ESC



Summit | SUM



Nizza | NIZ



Dusk | DSK



Midnight | MDN



Mimosa | MIM



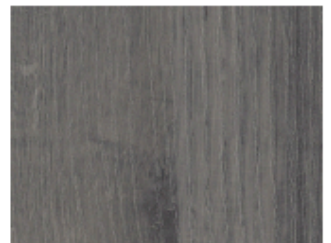
Mistral | MIS



Cannes | CAN



Esterel | EST



Cassis | CAS

ProvidersPlus

877-533-9626 | www.providersplusinc.com

Cleaning Instructions

Mild Soap and Water: A mixture of mild dish soap and water is safe and effective for everyday cleaning.

Vinegar and Water: Equal parts vinegar and water can be used to cut grease and grime.

Baking Soda and Vinegar: For tougher stains, mix into a paste.

General Cleaning Instructions

- Gently wipe surfaces with a soft cloth or sponge and mild soap/water.
- Avoid continuous or heavy scrubbing.
- Do not spray cleaning products directly-apply to a cloth or sponge first.
- Diluted rubbing alcohol or a small amount of Dawn dish soap or Simple Green® (50/50 with water) can remove ink stains and act as a degreaser.
- Use 20-30 gentle strokes with a soft cloth to remove most stains.

Disinfecting Surfaces

- Clean dirt from surfaces before disinfecting.
- Use 20 ml of bleach to 1 liter of water.
- Use disposable gloves and test on a hidden spot first.
- If using reusable gloves, dedicate them solely for disinfecting.
- Never mix bleach with ammonia.

Heat Exposure Guidelines

- Avoid excessive heat and steam.
- Do not place appliances that generate high heat or steam directly under cabinet doors or any furniture products.
- When using a self-cleaning feature on an oven, open all adjacent doors and install a heat shield between drawer/door fronts and the oven to prevent heat damage.

Products to Avoid - Use Will Void Warranty:

- Abrasives
- Ammonia
- Acetone
- Acids
- Thinners
- Solvent-based cleaners
- Wood preservatives
- Scouring pads
- Quaternary cleaners
- Brushes
- Powdered cleansers
- Paper towels
- Methylated spirits
- Harsh chemicals (e.g., sink and toilet bowl cleaners)