

6 Year Lake Arrowhead Bass Catch 2014-2019

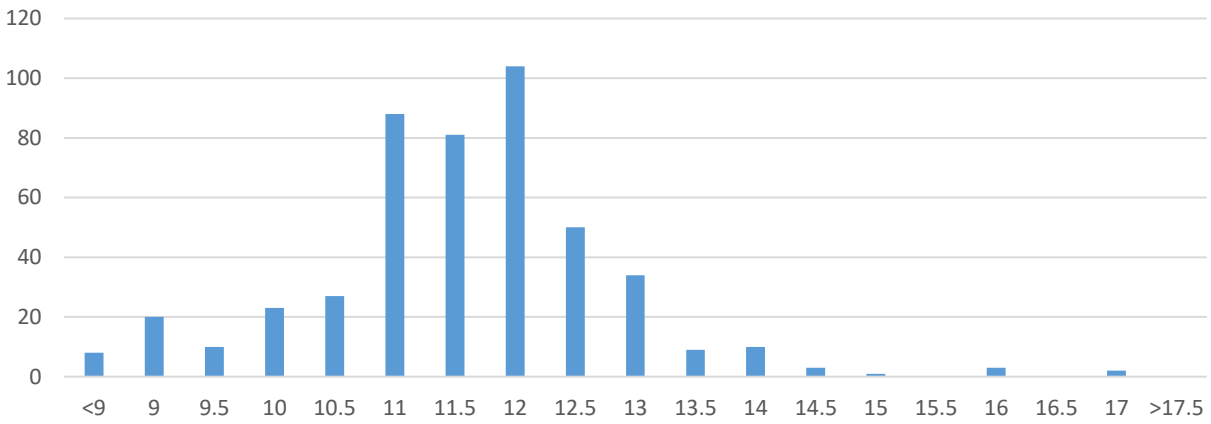
<u>Year</u>	<u>Days fished</u>	<u>Total Bass</u>	<u>Bass catch per day fishing</u>	<u>Bass Harvested</u>
2014	20	600	30	0
2015	16	369	23	30
2016	28	717	25	117 (16.3% of total)
2017	31	691	22	147 (21.3% of total)
2018	20	430	21	85 (20% of total)
2019	18	208	11.5	9 (4% of total)
<b>6 Year Total</b>	<b>133</b>	<b>3015</b>	<b>22</b>	<b>388 (13% of total catch)</b>

\*Days fished/total bass/bass catch/bass harvested # are for Adam Bueltel catch only/not all anglers.

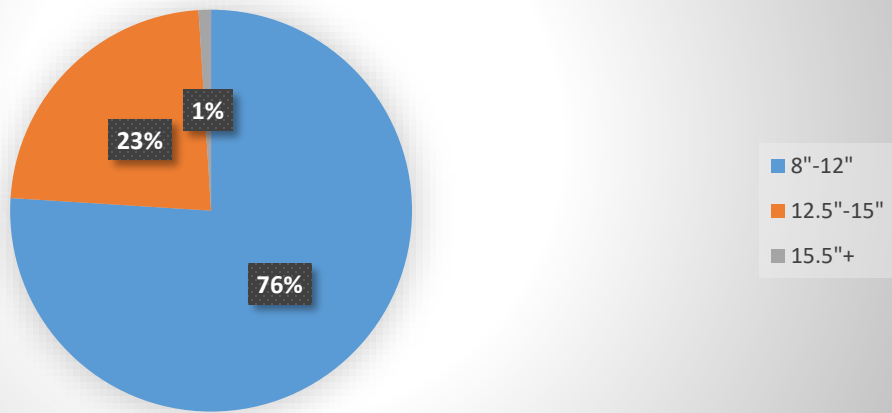
<u>Year</u>	<u>Average Length</u>	<u>Average Weight</u>	<u>Average RW%</u>	<u>% of bass caught over 15+inch</u>
2014	?	?	?	1.2%
2015	12.01 inch	.90 lbs.	?	2.4%
2016	12.37 inch	.97 lbs.	91.3%	6.69%
2017	12.80 inch	1.09 lbs.	91.4%	12.5%
2018	13.23 inch	1.15 lbs.	88%	16%
2019	13.69 inch	1.43 lbs.	101%	20%

Tiger musky first stocked in November of 2015, wipers, and walleye also stocked starting 2013/2014. Second tiger musky stocking was November 2017. Bass harvest will be limited/suspended in 2020 to make sure there are more 8-12 inch bass overall, currently (2019) we are down to 10.8% of bass are 8-12 inches. Numerous small bass were observed all year, mostly 4-8 inch bass. 50% of the bass are now over 14 inches (2019). We should see more bass up to 17+ inches, which help eat smaller bass, limit bass recruitment and help eat larger yellow bass. Stocking program will be re-evaluated after next lake survey with Nebraska Lake Management in May 2020.

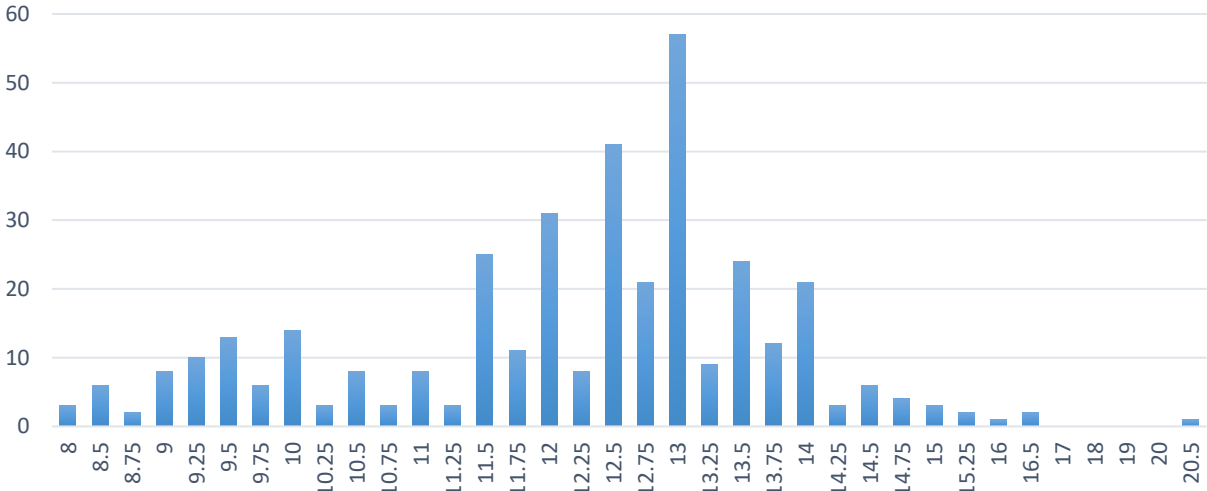
2014 Lake Arrowhead Bass Catch By Length  
 473 Total Bass Caught/Only 6 bass caught over 15 Inches



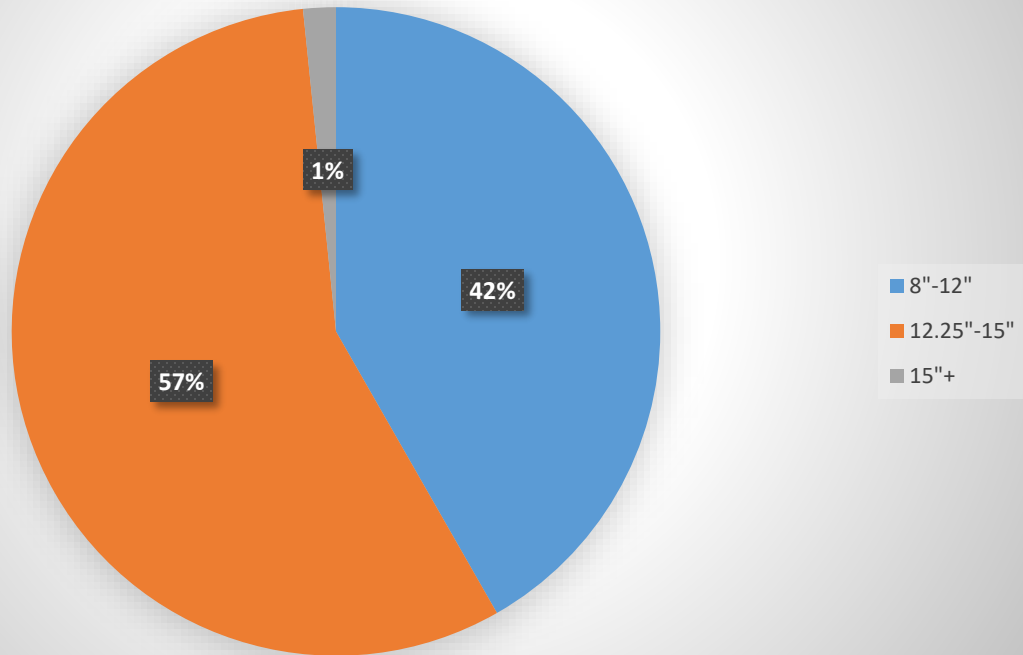
2014 Lake Arrowhead Bass Catch By Length  
 Goal is 8"-12" 40%/12.25"-15" 40%/15.25"+ 20%



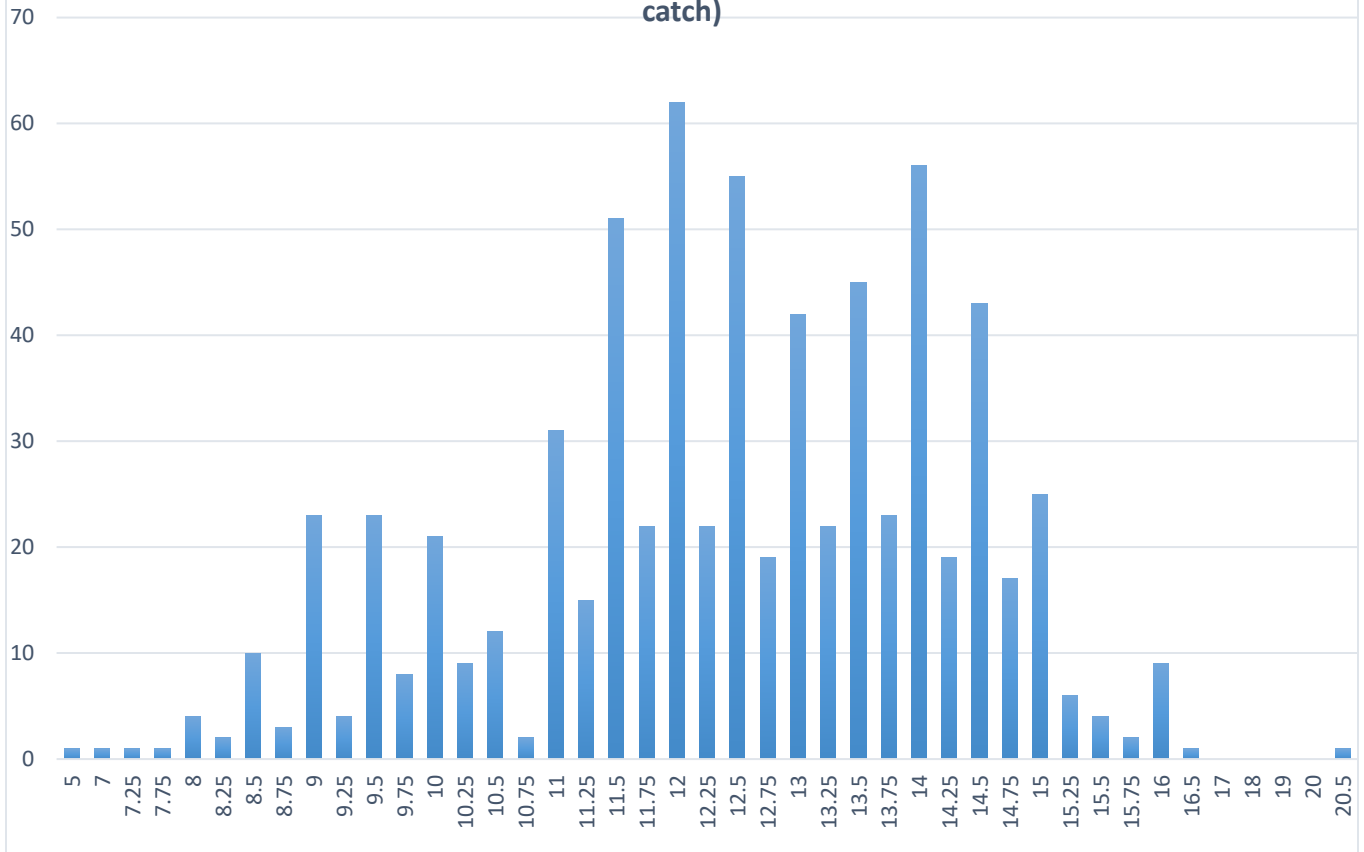
**2015 Lake Arrowhead bass catch by length**  
**369 total bass**



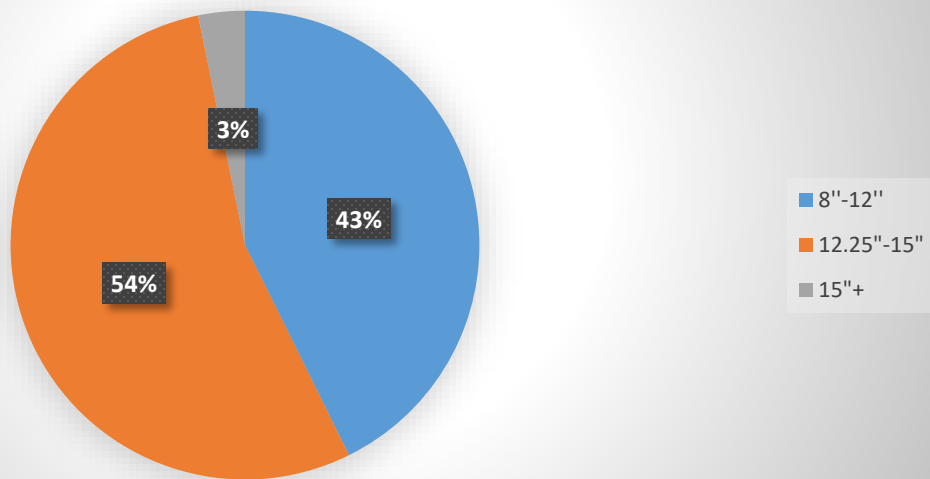
**2015 Lake Arrowhead bass catch by length**  
**Goal is 8"-12" 40%/12.25"-15" 40%/15"+20%**



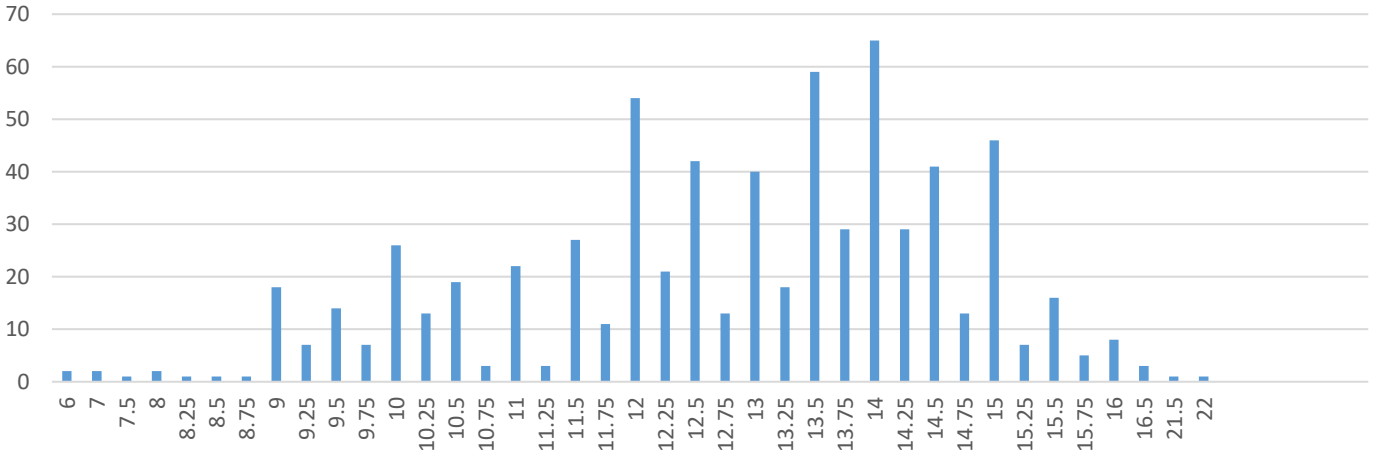
**2016 Lake Arrowhead Bass catch by length**  
**717 Total Bass/Relative Weight is 91.3%/Goal is 95-100%**  
**123 of 695 bass weighed were at 100% or better relative weight (17 % of total catch)**



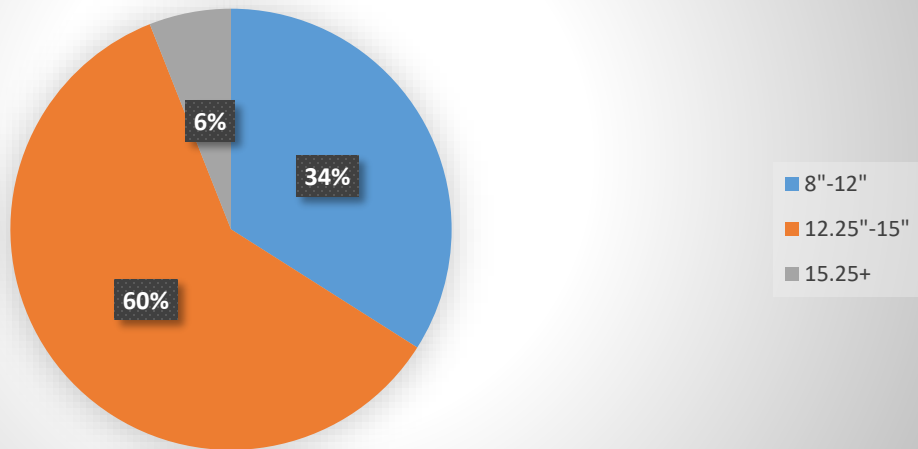
**2016 Lake Arrowhead bass catch by length**  
**Goal is 8"-12" 40%/12"-15" 40%/15"+ 20%**



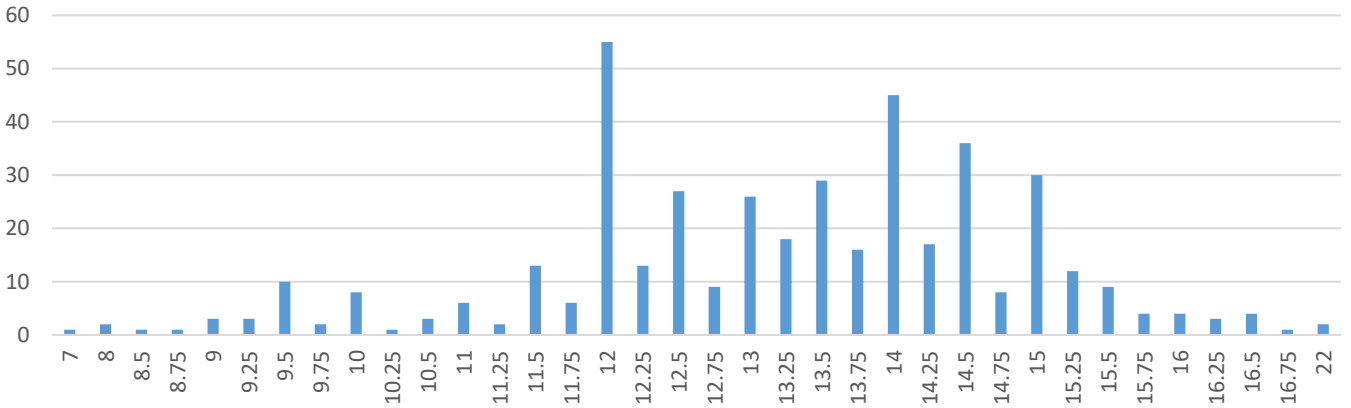
2017 Lake Arrowhead Bass Catch By Length  
 691 Total Bass/Relative Weight is 91.4%/Goal is 95-100%  
 134 of 691 bass weighed were at 100%+ relative weight (19.3% of total bass catch)  
 Average bass length was 12.80 inch, Average lbs. was 1.09



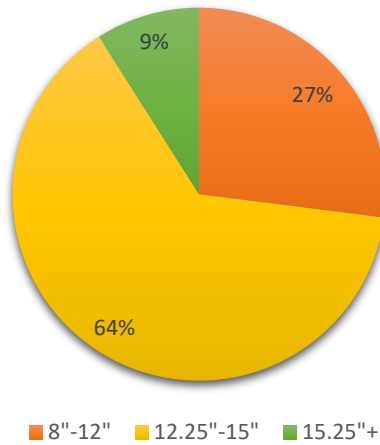
2017 Lake Arrowhead Bass Catch By Length  
 Goal is 8"-12" 40%/12.25"-15" 40%/ 15.25+ 20%



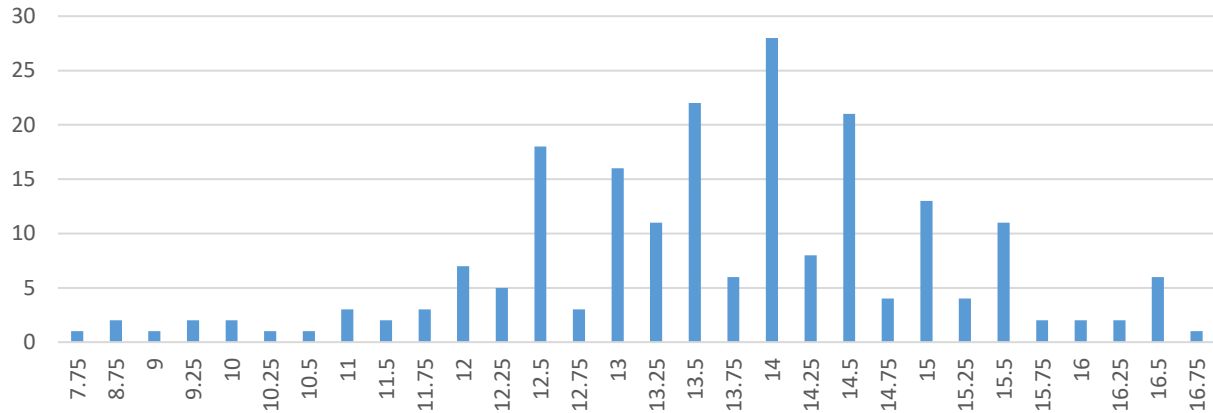
2018 Lake Arrowhead Bass Catch By Length  
 430 Total Bass/15+Inch bass (69) 16.02% of total catch  
 2017 15+ Inch bass (87) 12.5% of total catch  
 2016 15+ Inch bass (48) 6.6% of total catch  
 2015 15+ Inch bass (9) 2.4% of total catch  
 Largest bass/22 inch (2)



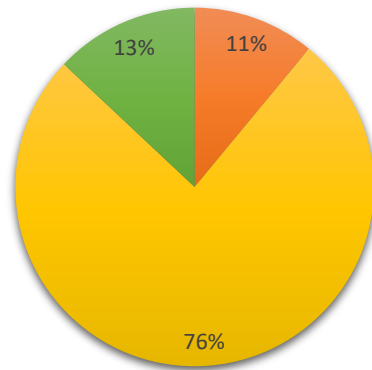
2018 Lake Arrowhead bass catch by length/430 Total Bass  
 Goal is 8"-12" 40%/12.25"-15" 40%/15.25+ 20%



**2019 Lake Arrowhead Bass Catch By Length**  
 208 Total Bass Caught/Avg Length-13.62 in, Avg lbs.-1.43 lbs.,  
 Avg RW-101%  
 20% of bass over 15+ Inches



**2019 Lake Arrowhead bass catch by length/208 Total Bass**  
 Goal is 8"-12"=40%/12.25"-15"=40%/15.25"+=20%



■ 8"-12"   
 ■ 12.25"-15"   
 ■ 15.25"+