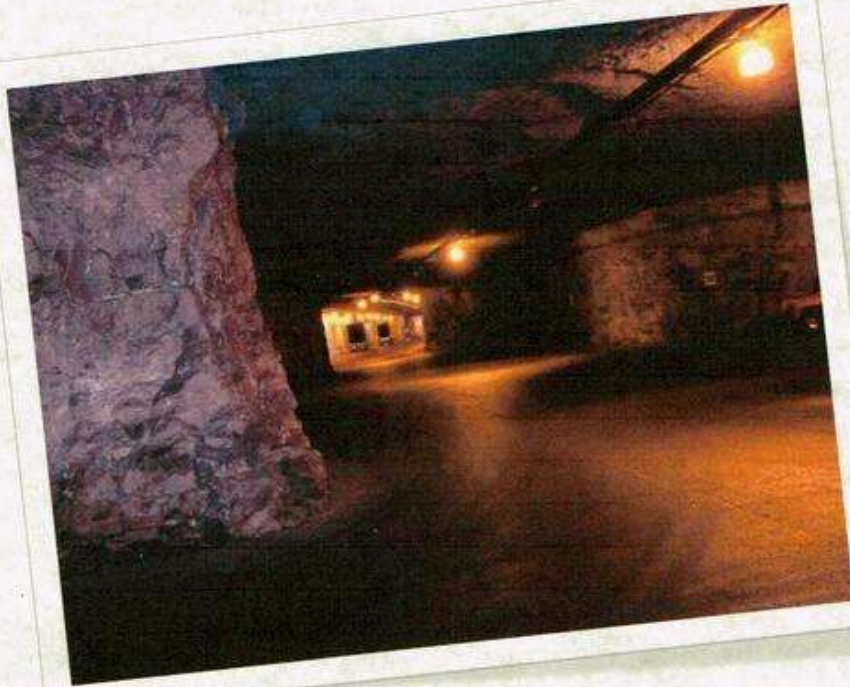


\$49.95



SECRETS OF THE

DULCE BASE

ALIEN UNDERGROUND

By Gil Carlson

A Blue Planet Project Book



SECRETS OF THE

DULCE BASE

ALIEN UNDERGROUND

By Gil Carlson

Blue Planet Project Book #2

Copyright ©Gil Carlson 2014

ISBN: 0991494202 | ISBN-13: 9780991494200

Published by Wicked Wolf Press

WickedWolfPress@aol.com

Contents

Introduction to Dulce Secrets	4
Dulce Underground Alien Base... the story begins	6
What do we know about how The Base is used?	8
the secret construction details	9
Just who are these aliens inside the base?	11
Dulce Base Activity.....	12
The Rand Corp. Gets Involved in the Dulce Base.....	13
Nuclear Tunneling Machines that make it possible	15
The Dulce Base - what's inside.....	16
A Good Description of Dulce Base	19
What Kind of Research goes on at Dulce?	21
Statement from Philip Schneider	24
The Dulce Wars	25
Security at the Dulce Base	26
Dulce Base Protected against Remote Viewers	32
Remote Viewers tap into the aliens at Dulce Base	33
The Town of Dulce	39
Dulce Base and Low Gravity.....	40
The Dulce Base Today	40
Are there Other Underground Bases?	40
Aliens Residing Underground not new to area	43
Abductees taken to Dulce and talked about it?.....	48
Witness Report #1 Christa Tilton	48
Witness Report #2 Story of Thomas Castello.....	61
Witness Report #3 John Anderson.....	101
Witness Report #4 A Private	102
Witness Report #5 Jicarilla tribal police officer	103
Witness Report #6 Message from a Dulce Intern	104





Introduction to Dulce Secrets

As we explore the mysteries and deep dark secrets associated with the Dulce Underground Base, we soon discover that there is no shortage of material available, but accurate material? That's a different story!

As we shovel through all this "stuff" we discover a lot that was given to us by writers with powerful imaginations and those folks who like to spread baseless rumors.

And there's all these Dulce facts that seem to be mixed with someone's personal and religious beliefs. And that's fine if you want to believe that, but I'm not going to waste your time or strain your senses with ideas that Dulce is part of a religious end-of-the-World theme, or a plot by Masons or the Illuminati, or Satan, the Great Dragon as a Reptilian with all his minions in caves below our feet just waiting for the right moment to fulfill his plans.

If you want to believe in that, fine, and maybe there is something to it, but this isn't the place for it. I just want to bring as much info that seems to make sense and all of secrets I've discovered.

Now some folks would claim that this is all a part of a huge Government cover-up, but, while I always try to get as much information as I can pry out of sources, the Government needs to keep things secrets if they are going to protect our country.

We should never have allowed all these countries to get the A-Bomb secrets or for China to get all of our missile and space secrets that President Clinton was eager to hand out.

I get tired of hearing about all the Government conspiracies, there enough real ones already that we don't have to go around imagining a few more.

And anytime you reach out for a closer look at anything involving aliens and UFOs there are bound to be what starts looking like government cover-ups and government misinformation as well as folks who automatically label you as a kook for even thinking that aliens and UFOs just might exist!

Before we get started here, for those out there who are already questioning my sanity for writing about this strange stuff, and are asking "How do I know these things are real, and can I prove it?" Yes, I know they are real, if UFOs weren't real, why would the government go to so much effort to convince people that they didn't exist?

You want better proof, like maybe a hatch or taillight assembly from a UFO? I don't just carry those around and if I did have something like that, I would have listed it on eBay already.

Besides, do you really think a piece of evidence like that could exist today after all the scouring the military did in places like Roswell? If they didn't exist, why would the government be so anxious to make sure they have all the pieces?

OK, try this, go to Roswell and dig around, then let it be known that you recovered a strange looking piece of a flying craft of some kind and see how long it will take before you are confronted by some official-looking government folks who are demanding that you turn it over to them.

By the way, if UFOs were just something imagined by crazy folks, why would the government be so anxious to recover a piece of something that doesn't exist, unless they have more information that they exist then we do?

And I did see some strange craft. I was 18 and in the Army stationed at Ft. Sam Houston in San Antonio Texas. This was in 1963 and right before President Kennedy was assassinated. (Not that it has any connection)

We were all standing in the field waiting for someone to tell us what to do, when we all noticed a UFO above us, not close enough to see a lot of details, but it was cigar shaped and had different colored lights that were circling it. Either flashing one after the other or it was rotating.

(I wonder if certain saucer shaped UFOs when tilted, give the cigar shaped appearance.)

Anyway, it was huge, like a blimp, but I don't think it could have been a blimp and I'm pretty sure this wasn't anything the military had then. It just stayed up there for a long time without any movement. We finally got tired

of looking at it. The next day there was a story about the UFO in the San Antonio paper.



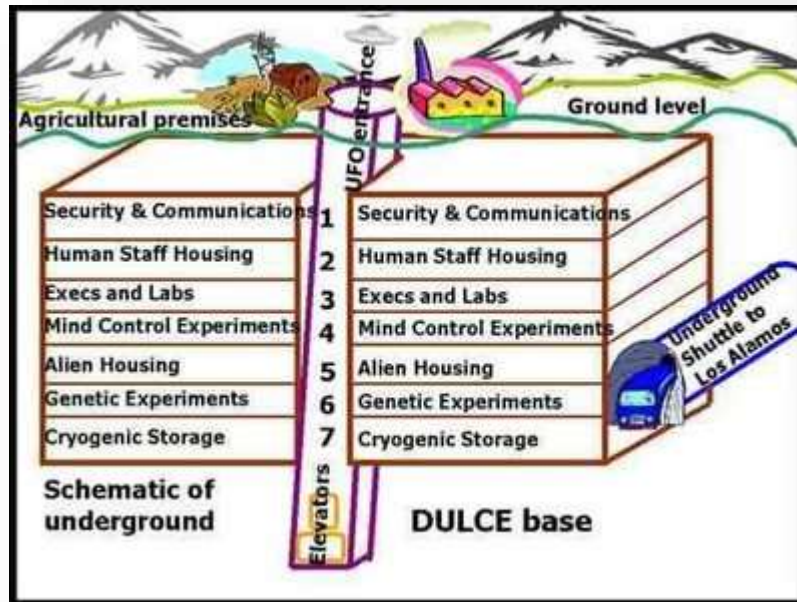
Dulce Underground Alien Base...the story begins

Of all the strangeness going on here on Planet Earth, Dulce has always struck me as one of the most interesting. Maybe because it has such a morbid darkness to it and the strangeness of the residents of the town of Dulce, as well as what I perceive to be a very powerful response to any mention or speculation about Dulce.

So for your own good, I would strongly advise against going to this area and snooping around or asking questions.

So let's get started. Since what I feel is the most accurate information on Dulce came from the Blue Planet Project, we will start our journey there.

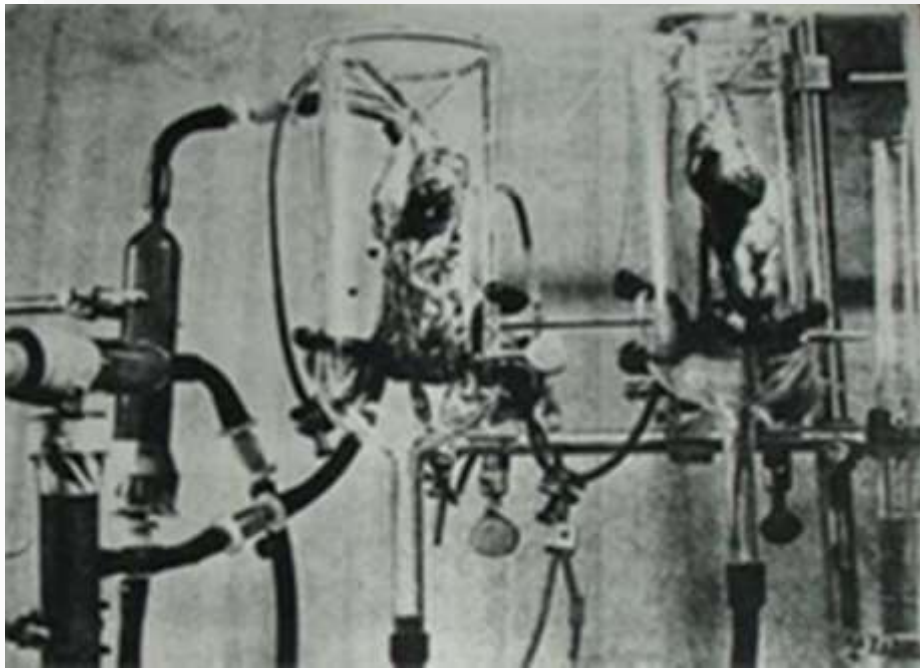
There seems to be a good deal of evidence about the strangeness of The Dulce Base from the folks who helped in the construction and then from those who worked in the labs, intelligence personnel (such as NSA, CIA) and even some abductees.



Consider the similarity between everything we will be covering here and the movie 'CLOSE ENCOUNTERS OF THE THIRD KIND'. Could the movie be a plan of disclosure? The coordinates of the location are not far off and the



mountain where the actual base is and looks much like the mountain in the movie.



What do we know about how The Base is used?

It is known to be a genetics lab and some of the work there is devoted to studying the mutation and human genetic effects of radiation. And, yes some of the work is devoted to studying alien life forms.

But there are hints of so much more going on there, things that they fight to keep secret. Some of this will be unraveling as we get further into this book. Are you brave enough to continue on?



the secret construction details

The construction of the base is 2 1/2 miles NW of Dulce, and it is up on the Mesa, almost overlooking the town. It has been claimed that level 1 of the Dulce base reaches under the town of Dulce itself at a depth of some 200 to 300 feet.

In the revised September 1950 edition of "The Effects of Atomic Weapons", prepared for and in cooperation with the U.S. Department of Defense and The U.S. Atomic Energy Commission, under the direction of the Los Alamos Scientific Laboratory, we read about why complete underground placement of bases is desirable.

And on page #381: "There are apparently no fundamental difficulties in construction and operating underground various types of important facilities. Such facilities may be placed in a suitable existing mine or a site may be excavated for the purpose". I understand that this facility is connected to Los Alamos, via a Tube-Shuttle.

It is claimed, and this may seem a little far-fetched, that the U.S. Government, in 1933, agreed to trade animals and humans in exchange for high-tech knowledge, and to allow them to use undisturbed, underground bases in the western United States.

A special group was formed to deal with the Alien beings. In the 1940's, aliens began shifting their focus of operations, from Central and South America to the United States.

It was not the first base built with the Aliens and others are located in Colorado, Nevada, Arizona, Alaska, etc.

It seems to me that with the aliens superior abilities, there would be no need to work with the humans, they would be more secure in well hidden areas and with electronic shielding abilities, there would be no need to worry about being discovered.

Besides, why would they be foolish enough to consider trading some of their scientific and weapon technology to foolish humans?

The continental divide is vital to these specific alien entities. Part of this has to do with magnetic substrata rock and high energy plasma states and this area has a very high concentration of lightning activity; underground waterways and cavern systems, fields of atmospheric IONS, etc.



Just who are these aliens inside the base?

Maybe we shouldn't be referring to them as aliens, they just might have a better claim to this planet than we do!

Some of what I've read states that this group of aliens consider themselves Native Terrans - an ancient race, descendants of a Reptilian Humanoid species which crossbred with some of the more primitive Uni-Terrestrial survivors.

There are those, like the author of the Blue Planet Project, who claim that Dulce has been a joint U.S. Government and Alien base!

This may seem hard to believe, and as we explore deeper into all the claims, I will be trying to find some definite facts that we can hang on to.



Dulce Base Activity

The Native Americans in the Dulce area recall that starting in 1947, troops were going in and out of this area every summer and the troops built a road and started hauling things in.

They also recalled signs on the trucks that read: "Smith Corp. Paragosa Springs Colorado". This may have been a cover to make it look like a logging operation, but witnesses reported that instead of logs being hauled out, large equipment was hauled in.

And also it was reported that later the road was blocked and destroyed.



The Rand Corp. Gets Involved in the Dulce Base

The Rand Corp. was contracted to do a study for the base on the geology around the nearby lakes. Most of the lakes near Dulce were made for the Indians using Indian Government Grants.

A grant was also used to construct the Navajo Dam. This dam is main source of conventional electrical power for the base, with the second source in Elvado. It has also been claimed that at Elvado there is also an underground entrance to the Dulce base.

I wonder how much of this power is made available to the Indians.

Maybe the Rand Corp. was there to do more than just a geology study.

On page 645 of the Project Rand, proceedings of the Deep Underground Construction Symposium of March 1959, it says:

"Just as airplanes, ships and automobiles have given man mastery of the surface of the Earth, tunnel boring machines, will give him access to the subterranean world."



Nuclear Tunneling Machines that make it possible

With all the rumors that have been floating around for years about secret military tunnels, not only under the Dulce Base but under the Denver Airport that connects to NORAD and numerous other locations, I used to wonder how this was possible. It seemed that a project of this magnitude was very far-fetched. Especially with the claims that there were high speed shuttles zooming through these tunnels.

Then I heard about the development of nuclear powered tunneling machines and it all fit into place!

Note that the September 1983 Issue of Omni Magazine, page 80, has a color drawing of "The Subterrene", the Los Alamos Nuclear powered tunnel machine, that can burrow through rock, deep underground, by heating whatever stone it encounters into molten rock, (Magma), which cools after the Subterrene machine has moved on. The result is a tunnel with a smooth, glazed lining.

And the author of the "Blue Planet Project Book" wrote that these underground tubes are used by electro-magnetically powered sub-shuttle vehicles, which can travel at high speeds. They connect the so-called "Hidden Empire" sub-city complexes.

And also, the top secret project code-named "NOAH'S ARK", uses the tube shuttles in connection with a system of over one hundred (100) bunkers and bolt holes, which have been established at various places on Earth.

And that many of these underground cities include such conveniences as streets, sidewalks, lakes, small electrical cars, buildings, offices and shopping malls. Now doesn't that seem like a major project?

How could something of that magnitude be going on without more info leaking out?

Well, over the years there have been news reports of communities complaining about being disturbed by high pitched sounds and vibrations. And they call in geologists and other scientists to investigate. Usually no cause is found other than a conclusion something like the earth's plates are shifting. And eventually these noises go away.

Now when I hear one of these reports, such as the one in the San Diego area several years ago, I have a good hunch of what is causing it. I wonder if there are any recordings of the sounds made by these nuclear tunneling

machines, and if they could be compared to the sound of these mysterious disturbances under some of our communities?

Just a thought. But maybe we should just keep quiet about this stuff, there's probably a good reason our Government is doing all this and we don't want the government coming after us, or worse yet, to end up with aliens on our doorstep!

The "Blue Planet Project" author also claimed that they built the same type of subterranean tunnels at the ultra-top-secret Moon and Mars bases as well. Okay, now that we are going beyond this planet, I'm getting out of my comfort zone.

Even though there has been a lot information floating around, about interplanetary bases, it just seems so bizarre. Maybe I'll look into it and cover it in another book.



The Dulce Base - **WHAT'S** inside

Since I'm probably not allowed inside the Dulce base, I'll rely on the author of the "Blue Planet Project" for his description:

"The Dulce facility, which goes two and half miles below the surface, consists of a central hub, the security section, and also some photo labs. The deeper you go, the greater the security. This multi-level complex, has over 3,000 cameras at various high security locations, such as exits and labs."

He reports that "there are over one hundred secret exits near and around Dulce. Many around Archuleta Mesa, with others to the south around Dulce Lake and even as far East as Lindrith."

Deep sections of the Dulce complex connect into a natural cavern system. A person who worked at the Base, who had an "Ultra 7-B" clearance reports the following:

"There may be more than seven levels, but I only know of seven. Most of the Aliens are on levels 5, 6, and 7. Alien housing is on level 5."

"The room for the electro-magnetic generator is nearly 200 feet diameter. This circular room covers the fifth and sixth levels [The extreme West-South wing]. Here is the intense magnetic generator. There is a 'buffer area' made of ceramic and Latex that is four feet thick, in all directions.



There are five entrances [plus an escape trap door on the sixth floor] on each floor. Each portal has a double door [one at the outside of the buffer and one at the inside of the buffer]. The security is severe. Armed guards patrol constantly, and in addition to weight sensitive areas there are hand print and eye print stations. No one under ULTRA 5 clearance is allowed near

the portals. Here is the device that powers the transfer of atoms. No information is available to personnel with ULTRA 7 or less. [H was ULTRA 7]"

A research team has gone up to Archuleta Mesa to take soundings under the ground and preliminary and tentative computer analysis of these soundings seem to indicate DEEP CAVITIES UNDER THE MESA (one source has stated that according to the data received, these cavities extended to a depth of over 4,000 feet!

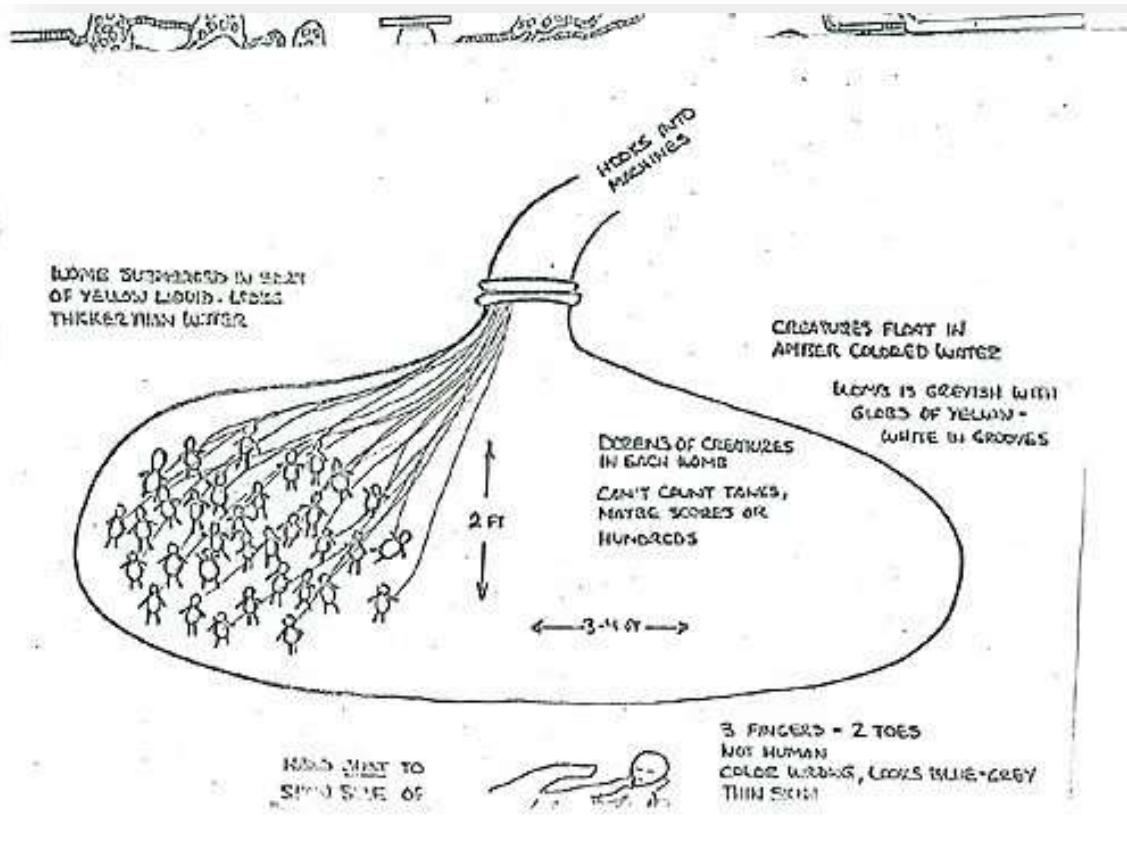
Thomas E. Castello, a worker at Dulce base, claims he met with one of the Reptoid aliens at the base who told him that they, the Reptoids, do not consider themselves to be extraterrestrials, that they are just returning to their native home underneath the surface of the Earth! Castello also claimed that there were over 18,000 Aliens at the Dulce complex at that time.

In March of 1990, Japan's Nippon Television did a 2-hour special on Dulce Base. Their reporters tried to get in, but could not find the base.

They were looking for the "Biogenetics Laboratory" where they believed they would find "Ultra Dimensional Entities" that materialize in disguise as aliens.

Norio Hayakawa was with the television crew and claimed to have interviewed many people in the Dulce area and he was convinced that something was happening there 10 to 15 years before. Such as the nightly sighting of strange lights, and plenty of military jeeps and trucks, limousines with CIA type people loitering around the area.

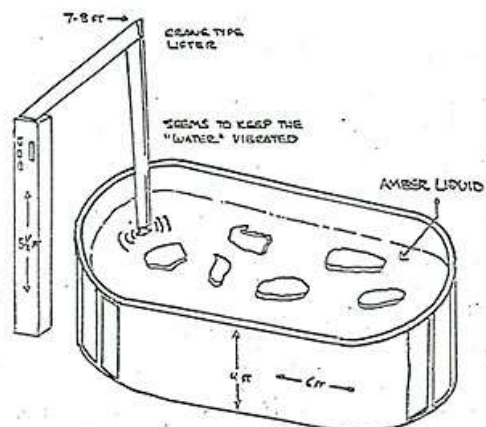
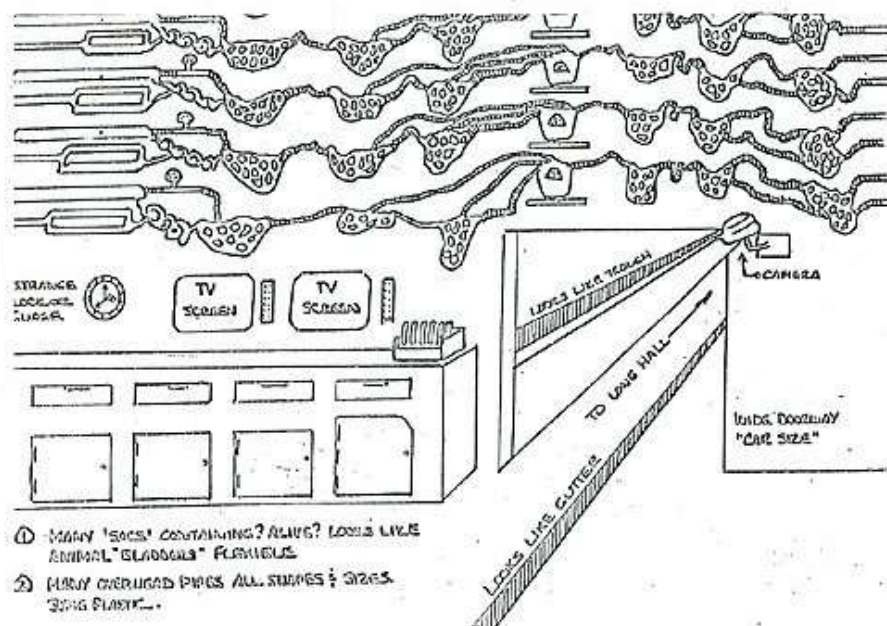
Norio said he was convinced that something "occult" was going on in the four corners area (SW Arizona, NW New Mexico, and into SW Colorado and SE Utah). And that the only stretch of highway that goes through the four corners area, Route 666, was put in around 1947, close to the first major UFO sightings. (By Kenneth Arnold in which he made the term "Flying Saucers" famous.



A Good Description of Dulce Base

The Dulce Facility is a seven-level underground research base, run by the Dept. Of Energy (As is the Nevada Test Site) and is connected to the Los Alamos labs. Level I has garages, street maintenance equipment, photo labs, hydroponic gardens to grow fresh vegetables, fruits, legumes, etc., human housing, a mess hall, VIP housing, a kitchen, and a security vehicles garage. Each of the levels has color-coded electric cars that are used for short-distance transport.

Level 6 houses the infamous "Nightmare Hall"; a security arsenal; a military arsenal; military security; and a generator/impulsor. This generator is 200 feet in diameter, and has a two-level Electromagnetic impulse device that can create a perfect clone [duplicate or replicate] of a person.



LOOKS LIKE LARGE PIECES
OF PALE MEAT IN CLOUDY
"WATER" SUSMERGED, NOT
FLOATING

What Kind of Research goes on at Dulce?

Alien organisms and biological technology are tested in the upper levels at the underground biogenetic laboratories. Alien genetic engineering, cloning, & cryogenic technology have been studied with a view towards 'enhancing' human genetics, deciphering the human genome, & gaining a biological advantage by artificial biological engineering. It is claimed that strange life forms have been bred in these laboratories.

U.S. Energy Secretary, John Herrington selected the Lawrence Berkeley Laboratory and New Mexico's Los Alamos National Laboratory to house new advanced genetic research centers as part of a project to decipher the Human Genome.

The Genome holds the genetically coded instructions that guide the transformation of a single cell, a fertilized egg, into a biological being.

"The Human Genome Project may well have the greatest direct impact on humanity of any scientific initiative before us today", said David Shirley, Director of the Berkeley Laboratory.

Covertly, this research has been going on for years, at Dulce labs. Level #6, at Dulce, is privately called "Nightmare Hair," it holds the Genetic Labs. Reports from workers who have claimed to have seen bizarre experimentation, are as follows:

"I have seen multi-legged humans that look like half-human, half-octopus. Also reptilian-humans, and furry creatures that have hands like humans and cries like a baby, it mimics human words, and also huge mixture of lizard humans in cages."

"There are fish, seals, birds and mice that can barely be considered those species. There are several cages, and vats of winged humanoids, grotesque Bat like creatures about three and a half to seven feet tall. Gargoyle-like beings and Draco-Reptoids."

"Level #7 is worse, row after row of humans and humanoids, (hundreds, perhaps thousands) in cold storage. Here too are embryo storage vats of humanoids, in various stages of development."

"I frequently encountered humans in cages, usually dazed or drugged, but sometimes they cried and begged for help. We were told they were hopelessly insane and involved in high risk drug tests to cure insanity. At the beginning, we were told never try to speak to them at all and we believed that story."

NOTE: Human and animal abductions were carried out for their blood and other parts. It slowed in the 1980's when the Livermore Berkeley Labs began production of artificial blood for Dulce and its sister complexes.



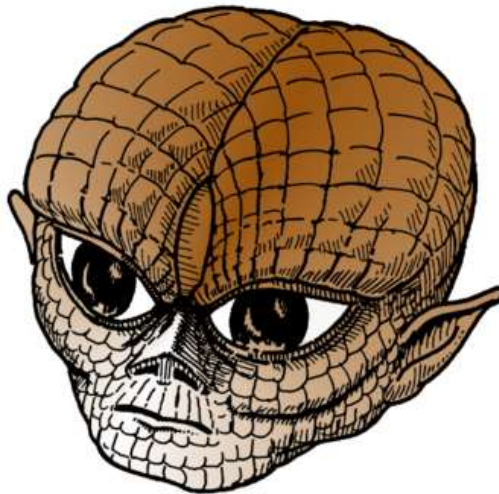
This type of entity shown here is one that abductees and contactees have seen in underground breeding facilities since 1963. They are bred by the thousands in underground facilities, the Dulce facility is the most well-known place that this activity occurs, although there are at least another twenty six bases within the United States that have similar facilities.

"The aliens are using the DNA from cattle and are making humanoids. (Got pictures of their video screen) Some of the creatures are animal-like, some are near human and some are human and short with large head. It would seem that if this is the case, not all of the so-called 'hybrids' are infused with reptilian DNA, but rather cattle DNA or a wide variety of other DNA sources available in the 'Nightmare Hall' level of the base.

They grow the embryos, then the embryos become active after a year of training, they become operational. When they die, they go back into the tank, and their parts are recovered.

A significant portion of the Dulce base is geared toward maintaining the survivability of the alien population. The main focus of these facilities appears to be acquisition and processing of biological materials in order to assure a supply of DNA and other biological materials for production of both aliens and synthetic lifeforms.

Synthetic lifeforms are created with animal based tissue, which can take any form [genetically manipulated], including artificial neural matter. Alien technology permits the withdrawal of memory from a human being and the implantation of that memory in synthetic neural networks; other methods use molecular computers to simulate memory.



The humanoids created by these methods end up being slow and clumsy. They have relatively short life spans, typically about three years -- usually shorter. Humanoid lifeforms are also bred with standard human beings,



producing hybrid lifeforms - the desired result is to produce self-breeding hybrids to function on the lower end of another Master-Slave game for the alien species. Terrestrial humans are in the middle.



Terrestrial humans are also used for training purposes - to train synthetics - and to train themselves to perform duties imposed by their alien captors. Some humans are kidnapped and completely used - right down to the atomic particles in the matter that forms the body.

Terrestrial humans are also treated with various mind control techniques, such as the Orion method of hypnosis [techno-hypnosis + drugs-chemicals + stress-repetition] and used to spread disinformation or distort information that will lead others astray.

The DNA acquired from animals and humans is altered and used to create lifeforms that grow to adult size in a matter of a few months, allowing for massive reproduction potential. Actual mixing of DNA types to create new lifeforms which are a hybrid between the human and non-human are done inside the fetus that grows inside a manipulated human female.

Statement from Philip Schneider

Philip, son of U.S. Navy Captain, Oscar Philip (German U-Boat commander and then in the U.S. Navy, was involved in the Philadelphia Experiment, and nuclear testing programs in the Bikini Islands) claims that in 1954 President Eisenhower entered into a treaty (Grenada Treaty) with an alien nation that allowed them to use a limited amount of humans for experimentation in exchange for alien technology.

Philip claims that eventually hostilities broke out due to the alien's failure to live up to their end of the bargain and in 1979 there was a firefight at the Dulce base.

Philip claimed that he worked at the Dulce Base as a structural engineer and while working on an addition to the underground base, stumbled upon a large cavern full of alien humanoids. The aliens were surprised and this led to a battle in which 66 humans were killed. Philip claims to have shot two of the aliens and survived even though he suffered serious wounds.



Philip Schneider then went on to work at Area 51 where he claims to have seen the military working with a number of alien spacecraft.

Then after two years on the lecture circuit, in January 1996, Philip was found dead in his Oregon apartment. Although an autopsy determined that it was a suicide, his ex-wife, Cynthia Drayer, claimed that it was a murder.

Here's more on Human/Alien conflicts:

The Dulce Wars

Finally in 1978, a small group of workers discovered the truth. It began the Dulce Wars, and a secret resistance unit was formed.

In late 1979, there was a confrontation, over weapons, a lot of scientists and military personnel were killed. The base was closed for a while, but now, it is currently active again.

NOTE: About the confrontation, Human and Alien at Dulce, eighty (82) people were killed between scientists and the National Recon Group, the DELTA GROUP, which is responsible for security of all Alien connected

projects. Also, there were hundreds of other wounded people and 132 dead aliens.

The Delta Group, within the Intelligence Support Activity, have been seen with badges which have a black triangle on a red background. A Delta is the fourth letter of the Greek alphabet, it has the form of a triangle, and figures prominently in certain Masonic Signs.



Former member of Naval Intelligence, and conspiracy writer (Behold, A Pale Horse), and lecturer, William Cooper (He later died at the hands of law enforcement officers trying to serve a warrant on him when he fired on them), claimed that the Dulce Base symbol is a black triangle against a red background with the Greek letter TAU", (T) within it.

Also that the same symbol has been seen on saucer transport ships.

Security at the Dulce Base

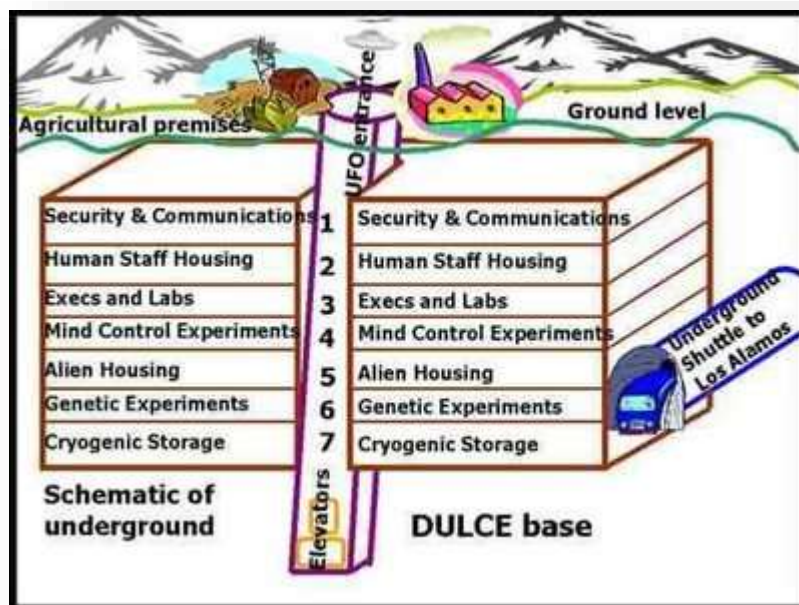
Security officers wear jumpsuits, with the Dulce Symbol on the front upper left side. The standard hand weapon at Dulce, is a "Flash Gun", which is good against human and Aliens.

They use a Retina-Reader for Identification in substitution of the old ID Cards, but the ID card readers are still used in card slots, for the doors and elevators, which had the Dulce Symbol above the ID Photo.

After the second level, everyone is weighed in the nude, then given a uniform, visitors are given one off-white uniform. In front of all sensitive areas are the Retina-Readers and scales built under the doorway, by the door control. The clearance is checked, identity is checked and also the weight. Any possible change over two pounds and a security yellow is alerted.

No one, without a specific clearance or authorization, is allowed to carry anything into or out of sensitive areas. All supplies are put through a security conveyor system.

The Alien symbol language, for the Greys and Nordics appear a lot at the facility.



The Dulce base floor plan show above, was illustrated by Thomas Castello. Its layout, when inspected carefully, appears to be extremely strategically planned.

From a vertical viewpoint, it resembles a wheel with a central hub and corridors radiating outwards like spokes. This 'hub' is the focal point of the entire base. It is surrounded by central security and extends through all levels of the base.

I believe this core to be the Achilles Heel of the entire facility. It probably contains fiber optic communications and power lines. This would justify its highly guarded and central location as well as explain its vertical continuation through all levels.

With all communication lines and power lines focused towards the hub, it is possible that any one level could be completely "locked down" by its own security or the security hubs from either above or below its own level. This would provide maximum control over the entire facility.

The 'spokes' or corridors radiating away from the central hub, lead to numerous other labs in five different directions. Connect the spokes and a pentagon is revealed in its design. From above, this base resembles the layout of the Pentagon in Washington D.C. complete with halls, walls and military insignias!

During the construction of the facility, which was done in stages, over many years, the Aliens assisted in the design and construction materials. Many of the things assembled by the workers were of a technology they could not understand, yet it would function when fully put together.

Example: The elevators have no cable, they are controlled magnetically. The magnet system is inside the walls. There are no conventional electrical controls. All is controlled by advanced magnetics. That includes a magnetically induced, (phosphorescent), illumination system. There are no regular light bulbs, and all exits are magnetically controlled.

What we do know is that the upper levels were built AFTER the lower levels. In other words, a U.S. base was built ON TOP OF a pre-existing alien base. This is not the only location where this phenomena has taken place. There are indications that there are situations like this up at the Nevada Test Site and elsewhere. Deep sections of the complex are connected to extensive natural cavern systems.

We know that the base consists of a many-leveled cylinder with tunnels radiating out in 5 directions. There are at least 7 levels. We know [through personnel who have worked there] that the first two or three levels are primarily US government personnel. We know that senators and astronauts have been brought to the facility and have been shown the first few levels.



The facility appears to be a state-of-the-art cryogenics facility and laboratory.

Level 7 is where human children and adults are stored as a source of biological materials.

Remember the long ships in the series "V" where all the humans were stored? It's similar to that, but it is more of a production laboratory situation.

Humans have been seen stored in clear cylindrical containers over 6 feet in height, suspended in a yellow or amber fluid -- alive and conscious but unable to scream or say a word. This has been a common observation in this installation as well as in some of the other 26 installations in the Midwestern US containing similar facilities.

Biogenetic research gained at Los Alamos, New Mexico was funded under the cloak of secrecy. It was combined with alien technology in the genetic sciences to produce expendable biological entities for use as the makers see fit.

Cloning of humanoids is part of the natural progress of scientific development. It is also claimed that political figures in governments have been cloned and reproduced. (I knew it!)

(Note: These replicates maintain the same 'surface' memories and identity of the 'original', which are electronically transferred into the clones mind via a mind-computer link, and the clone may or may not contain the original soul-energy matrix. However in most cases the duplicate is heavily implanted electronically in order to connect him/her to the alien collective on a subconscious level, or on a conscious level, 1f the body is under the full control of an alien identity, as in the case of the notorious 'walk-in' phenomena.)

It sounds like the plot from a grade B movie, doesn't it? Well, what is more comfortable for humans to handle in the guise of science fiction is actually based on fact; the main reason that this problem exists to the extent it does is that it is all literally underground and covert.

How much of the science fiction that seemed so unbelievable at the time has turned out be real? Have we been copying science fiction technologies, or were the sci-fi writers picking up on something that was actually real, or being developed, in thought forms they tuned into? And how much of the sci-fi ideas were actually leaked to sci-fi writers for some reason?

Although the Dulce base actually has more than 100 exit points, including large air intake ducts near Lindrith, these exits and other areas inside the base are covered by cameras. Everything and everyone is watched and monitored.



Many of the early underground facilities belonging to the Atomic Energy Commission in the 1950's were eventually turned over to projects relating to alien technology. Most apparently were then added on to by the forces that occupied them.

Residents of the Dulce area report that a certain section of road around Dulce Lake has been the site of several accidents. It is said that drivers report that they see a straight stretch of road where the road apparently curves.

Elders of the local Jicarilla Apache tribe report that when they walk by this area they have a similar visual problem. Some of them have even fallen into the lake because of this.

These same Elders refrain from discussing the animal mutilations. One interesting fact is that the Jicarilla Indian creation myth says that they emerged from underground.

Could this be an area containing time-space distortions? A similar area reportedly exists just south of the mid-point between Lakeport and Hopland, California.

Major time-space distortions have been detected there between these two. Many residents of that area have also died under mysterious circumstances, there have been reports of ancient caverns and tunnels with 'stairs' leading downward, several cars including government vehicles have disappeared along that stretch of road in the past, photographs of quasi-physical beings have been taken, strange voices from 'no-where', large black automobiles (Maybe driven by Men-in-Black?) which disappear into cliffs have been reported, and strange beings stalking the area at night.

The time-space distortions involve certain areas where, for example, an object that 'appears' to be 100 feet away may turn out to be a mile, and vice-versa.

Other areas where time-space distortions have been reported include Sedona, Arizona; the mid-point between Arkansas and Missouri; an area in or around Lake Ontario, Mt. Shasta and the Mojave desert in California; Montauk, Long Island; and of course the 'Bermuda Triangle' region, just to name a few.

A recent field investigation of the area adjacent to Archuleta Mesa proved to be difficult. Researchers were confronted by several small hovering spheres that had some sort of electronic emission that made them all violently ill.

Activity in the area of Dulce, New Mexico began almost at the same time as the Roswell crash - 1947. Studies of the area have confirmed that summer troop movements occurred every year after 1947 for quite some time. The construction of a road into the area was done, and trucks went in and out of the town. Later on, the road was mysteriously blocked by the 'military' and destroyed.

Dulce Base Protected against Remote Viewers

Sources claim that the Dulce and Pine Gap underground facilities are also equipped with these magnetic sensors which can detect a projected astral or 'magnetic' body of a human being, and in fact that these bases are simultaneously operational in the 3rd, 4th and 5th densities or dimensions.

It may be that the 4th and 5th dimensional personnel control the third dimensional activities. Aside from astral security systems that can detect astral intruders or the magnetic bodies of remote viewers, there are also apparently containment rooms specially constructed to trap and contain subspace life forms.

One remote viewer, an Australian by the name of Robert, encountered three other remote viewers or astral spies checking out the underground base that he had targeted [Pine Gap, Australia]. Two of them were roaming about as he was, but the astral or magnetic body of a third had apparently become trapped in an astral containment field.

He speculated on the possible effects that this might have had on that person's physical body, including the possibility that he might have slipped into a coma or worse.

Does this sound bizarre and rather unbelievable? Well, Some Amerindians speak of sorcerers who could 'suck the soul' out of a human body and place it in a container.

If that soul was absent from the body for a certain period of time then that soul's physical body would die. In the case of alien occult-technological manipulation, this might also be the case, unless the soul is returned or replaced by 'another' entity.

Remote Viewers tap into the aliens at Dulce Base

Courtney M. Brown, Ph.D., was involved in the secret military intelligence unit of remote viewers. They were used to focus in on and glean info from strategic targets.

One of the 'targets' to which Mr. Brown's military RV trainer sent him was the Grey aliens' collective mind, and more specifically he was instructed to search out the ultimate command or control center of the collective.



Shortly after this particular experiment began [one of many], Brown found himself in an area where several Greys were working, although he did not know exactly where this was. He 'followed' the collective mind or thought-flow and found it to be absolutely massive, giving him the feeling of something unbounded, and almost universal in nature. However, he did detect a center, a definite 'heartbeat' of this massive collective matrix, into which and out from which a steady stream of information was flowing.

He noticed, at one point, an unusual 'subspace' being that seemed to be directing the activities of the Greys he was observing, and discovered that the bodies of the Greys themselves were incarnated by such 'subspace' beings which apparently entered the Greys' embryonic bodies and used them as vessels to manipulate physical reality.

Brown was then instructed to locate other of these beings who apparently controlled the Grey collective from a subspace or astral level, and found himself in an area where several of these subspace or para-physical entities were located.

As he continued towards this 'center' the number of subspace or non-corporeal beings increased until he came to a place of much activity, something like a grand central station type of area, where these beings were very active in various pursuits.

He did not know exactly where this was, but noticed that the closer he came to the control 'center' the more he sensed an increasing rigid atmosphere of absolute military-like control.

He came to what he sensed was the central governing center of the subspace beings' activity, and in the center of this there was another area

where a "council of 10" very high-level subspace or para-physical entities congregated. These were apparently the governing principalities who were engaged in running the whole operation. The security here was absolutely incredible.

Then he perceived the SUPREME LEADER of this council of 10 para-physical entities... and at about this point Courtney Brown was jerked back into his body, so to speak. He sensed that this leader had detected the presence of his own subspace, astral or magnetic body which he had projected, and had followed this RV 'intruder' back to his physical source.

Brown and his trainer felt an oppressive, dark 'cloud' enter the room and it stayed there for about half a minute scrutinizing the scene. It left, apparently seeing the two RV'ers as "small fries" who were not worth wasting its time on.

Before Brown's expulsion from the command center however, he was able to perceive for a brief moment what this being was really like. He or it was an extremely powerful being, but one with a twisted personality that was full of darkness.

Apparently this being had come into conflict with another Force which it saw as its enemy. Brown sensed within this being a severe self-esteem problem, in spite of its incredible power, and because of this it had a consuming desire to be worshipped by others.

Brown was confused when he sensed that these subspace beings, and in turn the Reptilians/Greys, were actually COMMANDED by this leader to engage in self-indulgent and destructive activities.

This being apparently wanted his servants to use self-indulgent rewards or fear of punishment to maintain the absolute hierarchical command structure within its empire, as well as through the rest of the subspace hierarchy, and in turn throughout the Reptilian Grey's collective 'hive' society that they completely infested.

Brown also got the impression that it was FEAR and PRIDE - its perceived NEED to be worshipped - that kept this being from negotiating with its ancient enemy, and that this being was utterly desperate to maintain its very survival or existence [strange for a seemingly immortal subspace being] and chose to resort to rebellion and terrorism in a desperate attempt to take control of the situation.

Brown received a strong impression that this being was the ultimate universal terrorist! Apparently because of its all-consuming ego this being would NEVER humble itself before its 'enemy', and the same might be said for most of the upper echelon of the hierarchy who depended on the praise of their fellow collaborators to maintain their illusion of self-importance.

Could the 'subspace' beings described by Courtney Brown be fallen light beings or rebel angels?

Brown stated that this 'leader' in ancient times had his followers incarnate the reptilian Grey society, and had ordered them to sabotage their race.

The fourth planet of Zeta II Reticuli was the Greys' "home world" at the time, however Zeta II Reticuli is a star lacking in sufficient carbon content to allow for the 'natural' development of carbon-based life, so the Greys must have colonized that world sometime in the distant past.

The subspace beings, according to Brown, animated themselves through the Greys and turned them toward a mindset of self-indulgence, which in turn led to the drive within the Greys for immediate gratification at the expense of their future and their world's resources.

Once their world had become a polluted, radioactive ruin which was threatening their very genetic survival, the subspace beings under the command of their 'leader' offered a solution - all the Greys had to do to survive was to give up all individual rights and emotions, and submit to a collective-mind which would control every aspect of the Greys' culture - for their own 'good' of course, they were told.

Using the excuse that individuality was the root of the problem, the subspace collectivists took things to the opposite extreme and insisted that assimilation into an absolute collective-mind was the answer.

In other RV experiments, Brown 'saw' humanoids living on Mars in some past era. A large planetoid grazed the atmosphere with such violence -- barely missing the surface -- that a storm of enormous magnitude swept across the planet and much of the atmosphere itself was blown out into space. The Greys [who were observing this event and could have prevented the disaster] arrived as the planet was in the midst of upheaval, and offered to 'rescue' the Martians, but at a price - namely that the Martian humanoids surrender their society to the control of the Greys' collective and that others be cryogenically preserved in order to 'preserve' the humanoid Martian race.

Actually, according to Brown, the main purpose of the cryogenic project was to 'preserve' them as sources for genetic materials to upgrade the Greys' race from time to time. It was doubtful that they would ever be awakened, at least en masse. This occurred mostly after the Martian humans had escaped underground and were desperate for survival -- every day being a struggle for existence.

NOW, according to Brown, Mars is under the control of the Greys, although some pockets of humans and 'hybrids' may remain in various places underground.

Other sources claim that in 1985 the joint-operational "Alternative 3" facilities on Mars were sabotaged and taken over by the Draconians, or reptiloids and greys serving the Luciferian collective.

This was apparently one of several 'purges' that the aliens have carried out in order to ensure the absolute conformity of the human collaborators to their agenda, that is by purging out those renegades who possess too-much [from their perspective] individuality, which is the mortal enemy of their collective.

There is reportedly an elite force of 2000 'original' Greys based in the Martian moon Phobos. (There is much evidence that Phobos is not a real moon but is hollow and could be some type of man/alien/made structure. Possible a giant spaceship that was moved into place.)

These Greys are reportedly the 'hosts' for several million 'clones' that have been bred to serve the reptilian elite in this system. As suggested the Alternative-3 - or the so-called pure-bred Aryan "super race" -- humans on Mars and Luna may have been 'purged' due to some level of resistance against the Draconian-Orion-Reticuli collectivist forces with whom they 'collaborated'.

Apparently these humans saw that the two-sided 'collaboration' was turning into a one-sided 'dictatorship' controlled by the reptilian elite, and this 'purge' within the Martian and Lunar Alternative-3 facilities eliminated the resistance factions and ensured that only the most die-hard and devoted mind-controlled 'Aryan' slaves remained. In other words, these Aryan 'elite' suffered the very same fate that they had planned for us 'lower races' on planet earth.

One source has stated that these events on Mars and Luna were one of the main themes of discussion at the notorious meeting which took place

between George Bush, Mikhail Gorbachev and the Eastern spiritual leader Maitreya.

Maitreya, whom the secret government has reportedly been teleporting around the world using Montauk-type technology, in an attempt to provoke a worshipful response from those to whom he appears.



Maitreya is the New World Order's "ace in the hole" and may or may not even turn out to be "the one" mentioned in Revelation chapter 13. This meeting took place on the Island of Malta in the late 1980's, and resulted largely out of Bush and Gorbachev's terror over the events on Mars and the Moon, as well as similar threats that were being faced by the "Alternative-2" underground colonies maintained by the Military-Industrial Establishment in 'joint-capacity' with the Greys.

Back to RVer Brown: What Brown sensed was that the Greys were desperate. They realized that they not only needed to genetically upgrade their race, but also needed to attain emotional individuality in order for their culture to survive [and this may have something to do with the 'hybrid' projects]. However they are trapped by the collective itself.

There is presently a great sense of panic within the collective combined with a bizarre sense of protection which the combined psychic continuity of the collective provides.

Although they are desperate to attain emotional individuality which they are attempting to do by interfacing with humans, assimilating human genetics, and producing quasi-hybrid genetic offspring, they cannot fully make the break from the collective without the help of those who already exist in an individualized state, namely the humans.

For those of you who are familiar with the scenario of the 'BORG' collective in the "STAR TREK: NEXT GENERATION" series, certain episodes depicted a Borg entity by the name of 'Hue' who had developed emotional individuality during his captivity aboard the Enterprise that resulted from his association with human individuals.

He was later sent back into the collective and introduced the idea of individuality, and in later episodes gathered quite a following of other 'Borg' who had also broken-free from the collective and had developed emotional individuality.

The Reptilians are not alone in this dilemma, since many, many human cultures are 'trapped' in collectivism as well, such as those who are part of the Ashtar or Astarte collective.

The Town of Dulce

Dulce is a sleepy little town in northern New Mexico of about 900 population located above 7,000 feet on the Jicarilla Apache Indian Reservation. There is only one major motel and a few stores. It's not a resort town and it is not bustling with activity.

There is a level highway going into the area that is 36 ft. wide. It is a Government road. (Part of the off-limits road that goes through Colorado's Ute Reservation and then south across the border).

The area around Dulce has had a high number of reported animal mutilations. The Government and the Aliens used the animals for environmental tests, psychological warfare on people, etc. The Aliens also wanted large amounts of organic material for Genetic Research, Nutritional and other reasons.

Recently, participants in a field investigation, of the area near Archuleta Mesa, were confronted by two small hovering spheres. They all became suddenly ill and had to leave the area.

There are generations of frozen agents occupied in suspect positions, like at work in a gas station, drugstore, bar, restaurant, etc. They're there to listen and report anything which violates their limit of security.

Always in the town of Dulce, you never know who is who.

Dulce Base and Low Gravity

The Dept. of Interior that has a gravity dept. and they survey the United States and publish maps indicating the gravity contours. THERE IS A VERY WEAK GRAVITY at the site near Dulce. (Also another very weak gravity reading exists around Creede, Colorado, which is reportedly a northern extension from the Dulce facility.

There are also Southeast extensions as far away as Roswell and Carlsbad, New Mexico and an apparent Southwest extension that seems to reach as far as the Superstition Mts. east of Phoenix, Arizona.

These 'extensions' are not necessarily all base-complexes, but tunnels that have been excavated by aliens, secret government or ancient cultures - or all of the above - via nuclear drills which eliminate waste matter by melting and cracking the rock, and pushing the molten rock, as the machine moves forward, into the peripheral cracks of the tunnel, where the incandescent rock cools into a super-hard glazed and water-tight lining.

It is known that alien craft are very sensitive to the gravity levels and it is probable that other alien sites might also be located relative to low gravity.

The Dulce Base Today

Government activity at Dulce may no longer be present, as there are signs that the upper levels have been de-activated, at least in regards to human Government activity. Sightings of Greys atop the Archuleta mesa have been reported by Jicarilla Apache Indians as of the early 1990's.

Christa Tilton, whom we have information from later in this book, suggests that even if the 'Government' activity at Dulce has ceased, the Greys/Reptiloids are apparently still operating there en masse and very active within the base, and are continuing on with their former agendas.

Are there Other Underground Bases?

In the early 1960's, a subterranean nuclear blast occurred about 30 miles southwest of Dulce, New Mexico right off U.S. 64. This nuclear blast was conducted under the umbrella of project Plowshare, and was named

Gassbuggy. It has recently been alleged that this particular subsurface nuclear blast was used to create a hollowed out chute or chimney for development of a substation for a super-secret tunnel system attached to an underground black book project base.

The project was created under the guise of the use of atomic bombs during peacetime, and forged ahead under the umbrella of "Natural Gas Exploration". In fact, several of these multi-kiloton blasts were used as a rapid way of developing huge sub-surface chambers for facility development. It is reported that the technology to clean radiation is available and already in use for such projects.

Informants have mentioned underground tunnels and facilities in New Mexico at Sunspot, Datil, Corona, Taos Pueblo, and Albuquerque; in Arizona in the Santa Catalina Mountains; in Colorado at Delta, Grand Mesa, and Colorado Springs; in California at Needles, Edwards AFB, Tehachapi Mountains, Ft. Irwin, Norton AFB, and Morongo Valley; in Nevada at Blue Diamond, Nellis AFB, Groom Lake, and Papoose Lake areas, Quartzite Mountain, and Tonopah.

Tehachapi Mountains California: in the summer of 1988, a young couple, Ray and Nancy, reported that they had gone to a plateau in the mountains after Ray's shift work had completed at the Northrop Plant.

Ray was inspector on the B-2 project. The plateau is adjacent to the perimeter of the leased Tejon Ranch where Northrop has built a secret underground facility.

It was about one o'clock in the morning when Ray and Nancy spotted a brilliant orb coming out of the ground which flashed light in their direction. They could not account for two-and-half hours of missing time.

Ray thought that they had the orb under observation for about an hour, yet the next memory is of sunrise! Under hypnosis, Ray recalls being abducted and taken to an underground base populated by little grey EBEs and Air Force and other security personnel. The EBEs were examining Nancy who had been restrained on a metal table. Ray's emotions swelled under hypnotic recall of the incident.

Llano in the Mojave-Desert: It is an extremely secure facility, but witnesses have seen an extremely bright light burning atop a pylon inside of a movable behemoth-sized structure. This light does not illuminate the interior of the structure! Orbs have been seen in the vicinity of this facility as well.

Area near Calvert, Texas: UFOs are using this as a base or way station. Caverns exist beneath farmland on the outskirts of town. "There is a complex network of Caves and Tunnels which connect somewhere underground.

A check of geographical survey maps will show that Calvert is built directly on top of a fault line which zigzags for miles in all directions."

The ranchers and farmers in this area have reported hearing peculiar noises coming from deep beneath their feet. "Individuals living five or six miles outside Calvert have repeatedly been driven out of their homes into the cool evening air by the sound of generators.

It appears to them as if a steady droning noise is originating from all directions but is loudest when ears are placed to the ground."

San Gabriel Mountains on the Western edge of the Mojave Desert: In April 1973, students camping "felt uneasy" and then saw a giant man-like creature. Researchers from the UFO Research Institute were called in.

They discovered the sound of geared machinery and what might be compared to a hydroelectric plant coming from "beneath the forest floor". Sounds of operating machinery have been recorded coming from mines in the area after midnight.

The Yakima Indian Reservation: Southeast of Tacoma, Washington. One particular section 40 miles wide and 70 miles long, bordered on the west by the Cascade Mountain Range, is of special interest.

It is an area of canyons and heavily forested regions. The valley is essentially closed to the public and special permits are required to enter. Forestry personnel have heard unusual sounds for years coming from underground.

One area of intense activity is known as Toppenish Ridge. From deep within the dark, restricted canyons, 'glows' have been seen. This area is not accessible by foot or vehicle. Low-flying silver cigar-shaped craft have been seen to disappear into the deep canyon known as the Middle Fork of Toppenish Creek.

Aliens Residing Underground not new to area

The Indians of the South-West U.S.A., have legends of tall, fair-haired Beings. They also have legends about the 'Little People'. Both are said to have 'Sky Craft' or 'Saucers'.

American Indians speak of Underground Races, Surface Races and people living 'Above', in the Heavens. The Navajo legends state they once lived underground, together with the Coyoteros and the White people, below a mountain near Silverton, Colorado.

NOTE: Mt. Hesperus [meaning 'VENUS'] is sacred to them. After coming to the surface they went south and settled in the canyons of the Dinetah area, near Navaho Dam, between Aztec and Dulce, New Mexico.

Could the ancestors of the Pueblo Indians have been the ones who originally excavated the lower levels of the Dulce base and the lower tunnels which have apparently existed within the deepest levels of the base for centuries if not millennia? If so, then why did they revert to a low-technology culture once they reached the surface?

Could it be that the scientific factions of their race either established an interaction with the 'Greys' and/or left the planet altogether, leaving the rest to fend for themselves?

Hopi legends say that their ancestors were driven to the surface by another faction of their own kind who turned to practicing sorcery. Apache legends, according to Robert Morningsky, state that the "Two Hearts" or the "Children of the Lizard" drove the Pueblos to the surface after they had invaded their underground domain.

Could BOTH of these scenarios be true? In other words, could one scientific faction have remained behind in a collaboration with the reptilians, with another faction leaving the caverns in starships and/or migrating to the surface 'world' and/or elsewhere through these ancient and massive underground systems?

They then set up defense sites and expanded south towards Mount Taylor and west into Arizona. Built atop high mesas were fortresses and towers consisting of three or more stories.

The Pajaritan Pueblo Indians have a Legend that they emerged from the INNER EARTH, near the Great Sand Dunes [National Monument] in Colorado. They then traveled down the Rio Grande, setting up Pueblos.

The area now known as Los Alamos, was considered evil. The home of Underworld 'Little People', from which would come the curse of 'The Gourd of Death'! And so it did [in the form of the nuclear bomb]. 'The Greys' ['Little People'] are 'Deros'.

According to New Mexican Folk Myth, Montezuma was born near Taos and trained by beings who lived in Caverns, inside Pueblo Peak. [NOTE: At nearby Blue Lake, UFOs have been seen entering and exiting the water.]

The Aztec of Mexico, who some think originally came from here, believed that the Sun God needs Blood and sacrificed humans for it's' nourishment. They killed over 20,000 people each year.

Near Taos, in a Cave above the Lucero River, not far from Frijoles Canyon, is where Human sacrifices were made - some say EVEN NOW. (Note: According to one source from Baltimore, MD., one man encountered a reptiloid being while spending the night in a cave with black rock walls near some 'springs' north of San Cristobal, not far from Taos, N.M.

Members of 'Secret Society' groups, in Taos, have been found beheaded. [Like Arthur Manby, who told about a secret 'AZTLAND' Hot Springs, roughly 11 miles Northwest of Taos? It is flanked by Petroglyphs on the canyon walls.]

Cultists venerate the Mayan-Aztec Death God, 'Camazotz', who took the form of a WINGED CREATURE who removes the heads of his followers who displeased him. Research indicates the High Priesthood had contact with WINGED-REPTOIDS [who were known to devour humans] and the creatures were seeking various articles of commerce, possibly gold, Psycho-active [hallucinogenic] Plants, etc.

Throughout Puebloland, on pottery, CAVE and Kiva walls, will be found decorations representing a Feathered or horned snake [The Plumed Serpent, Quetzalcoatl].

From the Pecos Pueblo, Montezuma is said to have led his followers south and founded Tenochtitlan [Mexico City].

THE MANIPULATORS OF THE MIND -- Alien Civilizations have contacted some of the Earth's inhabitants and practiced various forms of thought control on those they have contacted. Officer Herb Schirmer, Betty and Barney Hill, and others were given post hypnotic suggestions to try and make them forget the contacts. Only through strength of character and hypnotic regression were they able to talk about their experiences.

The 'Aliens' use us, by reaching into our minds directly... WE SHOULD NOT RESPECT ANY GROUP WHICH USES A METHOD OF INTERFERING WITH OUR BRAINS' NORMAL ELECTRICAL PATTERNS. They use devices which produce a combination of flashing lights, pulsating sounds, ELF & E.M. Fields.

It is also INSIDIOUS to put 'implants' [Brain Transceivers] into Human Beings. And WORSE, to kill them for their Blood and other nutrient substances [Vital Energy resident within their Vital Fluids].



The 'Greys' [the short, 'Big Heads'] are mercenaries. They interface with humans in 'Secret Societies' and the [fascist] Military/Governmental Complex. An interconnected 'WEB' manipulates the surface Earth cultures... The 7'-8' tall Reptoid/Drac have been seen giving directions to the 'Greys'. The 'Reptoids' get their orders from the Elite WINGED DRACO. (Note: the actual chain of command seems to begin with the rebel angels or 'poltergeists' which utilize bio-synthetic constructed physical 'forms' to operate in the physical dimension - these 'bodies' have been recovered from crashed discs and seem to consist of a 'sponge-like' substance throughout; followed by the para-physical 'Mantis-Insectoid' type beings and the 'Winged' and 'White' Dracos or 'Mothmen' as John Keel refers to them in his book "THE MOTHMAN PROPHECIES" - although it is not certain which of these three are superior; and then the large 'Lizard' or 'Crocodilian-like' saurian bipeds or Reptiloids; a dark large-muzzled 5 ft. tall [approx.] race that are sometimes referred to as the 'Iguanas' - a satanic 'priest' class of human-sized reptiloids that have been seen wearing dark hooded robes and seem to be a cross between the tall Reptiloids and the smaller Greys; a race of 'frog-faced' amphiboid lizards approximately 4 feet tall; various types of 'Greys' with blue-grey, brown-grey, white-grey, green-grey, tan-grey, etc. skin as

well as the 'genetically engineered' hybrid reptiloids and greys which possess insectoid and other genetic characteristics; followed by various non-hominoid reptilians such as the sea-saurians, giant subterranean 'serpents', the so-called 'dragon-worms', etc. which have been encountered within the deeper cavern systems or in the sea and which 'seem' to be used more for 'psychic energy' channels. All of these various alien branches collectively make up what has been referred to as the "Serpent Races".

THE WINGED SERPENT - The Reptilian/Amphibian Humanoids have been interacting with Earth for AGES. Many Contactees and Abductees repeatedly describe an Insignia of a Flying Serpent on a shoulder patch, a badge, a medallion or a helmet.

NOTE: Snakes have skeletal indications of atrophied arms and legs. There have been many transformations & metamorphosis. 'The SERPENT RACE' [like snakes] lives underground. Yet, they can come out, in their 'Saucers' and 'FLY'.

THE 'EL' GIANTS - Elite Cast 'MAN,' the 'Orion [Betelgeusian] Group', have Outpost Bases inside the planet MARS. They are also known as 'The Titans'...'The Brothers'...etc."

Note: This 'Mars-Orion' reference is the only source we have which actually claims to identify an extraterrestrial colony of the giant 'EL' humans, Titans, Anakim, or Nepheli. The Orion star Betelgeuse is most often referred to by some contactees in reference to the 'giants'.

Some of the residents of the Jovian moons claim that they previously came from or 'returned' from Rigel and Betelgeuse, apparently after being driven from those systems by the Draconian infiltration and invasion of Orion. Although we have come across little corroborative information concerning the 'extraterrestrial' activity of this branch of the human race, there have been round-about accounts of possible interaction with the Orion constellation.

As for a possible subterranean presence, one source claimed that several years ago a man was let down a cable into a gigantic cavern which had been broken into by a deep 'oil' well-shaft in Texas.

The man claimed to have met, within the caverns, giant 11-12 ft. tall humans - Anakim-Nepheli? - who claimed that the Creator and the angelic forces had ordered their civilization to remain in these caverns and to separate themselves from surface races where they might otherwise be worshipped as gods by ignorant humans because of their stature.

This man was told however that this condition would last only until the day of Judgment-Purification, at which point the 'giants' would once again be allowed to return to the surface world.

This doesn't mean that the 'EL' races do not interact with other interstellar federations who are less inclined to worship them.

Several years ago one woman by the name of Margaret Rogers claimed to have visited the underground civilization of the 'Nepheli' deep below Mexico. They said that their name for God is 'Tamil', which was also confirmed by the Telosian 'Bonnie' or 'Sharula', whose people reportedly have considerable interaction with the 'giants'.

They also told Ms. Rogers that one day man would develop interstellar craft and be so presumptuous as to approach the very throne of the Creator and invade His personal domain, and thus invoke his wrath upon the whole planet.

Could she have been referring to the 'Eternity Gate' within the Orion Nebula which lies far beyond the Orion star cluster, or to the 'New Jerusalem' Command, a virtual CITY OF LIGHT which has reportedly been seen by government astrophysicists to be emerging from the Orion Nebula vortex and is now on a direct course to Earth - due to arrive near the end of the third 'Millennium' A.D.?

Another source has claimed that many centuries ago these human 'giants' left their underground cities and set out on a great expedition to the stars, only to RETURN in later centuries from their great interstellar migration or expedition.

Upon returning they RE-ESTABLISHED their ancient and vast cavern cities beneath Alaska and elsewhere - some of which had been over-run by degenerate "animal men" from the earth's interior during their absence, who were particularly cruel to the natives on the surface.

Ancient records state that the Anaks, Nepheli or Titans once dwelled in the Middle East and also the ancient Gobi region, but now live mainly in large cavernous systems deep below Alaska, Oregon, Northern California, Utah, Texas, Mexico, some of the Pacific Islands, and also other parts of the western flank of North and Central America.

Abductees taken to Dulce and talked about it?

Now we are getting into some hazy areas. Some of you may not believe in abductions by aliens, and others, such as myself, believe in the possibilities, but may question the accuracy of some of the information revealed.

But it seems that the abductees themselves come away as believers!

So, with this in mind, I will tread lightly as I dig into these abduction cases that may shed some light on underground facilities that resemble Dulce.

Witness Report #1 Christa Tilton

Abduction Case of Christa Tilton of Tulsa Oklahoma July 1987

"My experience happened in July of 1987. I had about a three our 'missing time' in which later, under hypnosis, I relived the most unusual night of my life... I did not go willingly to the craft. Two small aliens dragged me by my two arms on my back to the craft after they rendered me unconscious.

The next thing I remember is waking up on a table inside some type of small craft. A 'guide' greeted me and gave me something to drink. I now believe it was a stimulant of some kind because I was not sleepy after I drank the substance. I was taken out of the craft and when I looked around I noticed I was standing on top of a hill. It was dark, but I saw a faint light near a cavern.

We walked up to this area and it is then that I saw a man, dressed in a red military-type jump suit [like a pilot would wear]. My guide seemed to know this man as he greeted him as we came closer. I also noticed he wore some type of patch and was carrying an automatic weapon. When we walked into the tunnel, I realized we were going right into the side of a large hill or mountain.

There we were met with another guard in red and I then saw a computerized check-point with two cameras on each side. To my left was a large groove where a small transit vehicle carried you further inside. To my right it looked like a long hallway where there were many offices. We took the transit car and went for what seemed to be a very long time to another secured area.

It was then that I was told to step onto some type of scale-like device that faced a computer screen. I saw lights flashing and numbers computing and

then a card was issued with holes punched into it. I would later realize it was used as identification inside a computer.

I asked my guide where we were going and why. He didn't say too much the whole time except that he was to show me some things that I need to know for future reference. He told me that we had just entered Level One of the 'facility'. I asked what kind of facility it was and he did not answer.

This story is so very long and detailed and I hope to write more about it so I will [only] highlight some of the things that I saw... I was taken to a huge looking elevator that had no door. It was like a very large dumb-waiter. It took us down to Level Two where there were two guards in a different color jumpsuit and I had to go down a large hall and saw many offices that had computers that lined the wall.

As we walked by, I noticed the lighting was strange in that I could not see a source for it. Other people walked by and never once acted like I was a stranger. I felt I was in a huge office building where there are many employees with many offices and cubicles. I then saw an extremely large area which looked like a giant factory.

There were small alien-type craft parked at the sides. Some were being worked on underneath and it was then that I saw my first grey-type alien. They seemed to be doing the menial jobs and never once did they look up as we passed. There were cameras posted everywhere.

Then we arrived at another elevator and went down to Level Five. It was then that I felt a sense of extreme fear and balked. My guide explained that as long as I was with him that I would not be harmed.

So we got off and I saw guards posted there at the checkpoint. This time they were not friendly and were issuing orders right and left. I noticed that two of the guards seemed to be arguing about something and they kept looking over at me. I wanted to find the closest exit out of this place, but I know I had come too far for that. This time I was asked to change clothes. I was told to put on what looked to me like a hospital gown, only thank God there was a back to it!

I did as I was told because I didn't want to cause any trouble. I stepped onto this scale-like device and suddenly the screen lighted up and I heard strange tones and frequencies that made my ears hurt.

What I really thought was strange is that these guards saluted the guide I was with although he was not wearing any military clothes. He was dressed

in a dark green jumpsuit, but it had no insignia that I know of. He told me to follow him down this corridor.

As I passed the guard station, I noticed the humming of those cameras as they watched my every move. I was taken down another hall and it was then that I smelled this horrid smell. I knew what I was smelling or at least I thought I knew. It smelled like formaldehyde. Because of my medical background I felt probably more comfortable with this situation because I had gone through it so many times before.

We came to a large room and I stopped to look inside. I saw these huge large tanks with computerized gauges hooked to them and a huge arm-like device that extended from the top of some tubing down into the tanks. The tanks were about 4 feet tall so standing where I was I could not see inside them. I did notice a humming sound and it looked as if something was being stirred inside the tanks. I started to walk closer to the tanks and it was at that time that my guide grabbed my arm and pulled me roughly out into the hall. He told me that it wasn't necessary to see the contents of the tanks; that it would only complicate matters. So we went on down the hallway and then he guided my arm into a large laboratory.

I was amazed because I had worked in [a laboratory] before and I was seeing machines that I had never seen before. It was then I turned and saw a small grey being with his back turned doing something at a counter. I heard the clinking of metal against metal. I had only heard this when I was preparing my surgical instruments for my doctor in surgery.

Then my guide asked me to go and sit down on the table in the middle of the room. I told him that I wouldn't do it and he said it would be much easier if I would comply. He was not smiling and I was scared. I did not want to be left in this room with this grey alien!

About the time I was thinking this, a human man entered. He was dressed like a doctor, with a white lab coat on and the same type of badge I was issued. My guide went to greet him and they shook hands. I began shaking and I was cold. The temperature seemed awfully cold.

My guide smiled at me and told me he would be waiting outside and I would only be there for a few minutes. I began to cry. I cry when I get scared. The grey alien looked at me and turned around to continue what he was doing.

The doctor called for more assistance and it was then that one other grey alien came in. The next thing I knew I was very drowsy. I knew I was being examined internally and when I lifted my head, I saw this horrid grey alien

glaring at me with large black eyes. It was then I felt a stabbing pain. I screamed and then the human doctor stood next to me and rubbed something over my stomach. It was cold.

The pain immediately subsided. I could not believe this was happening to me all over again. I begged for them to let me go, but they just kept on working very fast. After they were finished, I was told to get up and go into this small room and change back into my other clothes.

I noticed blood, as if I had started my period. But, I continued to get dressed and when I came out I saw my guide speaking to the doctor in the corner of the room. I just stood there...helpless. I felt more alone than I ever had in my life. I felt like a guinea pig. After we left that laboratory I was silent. I was angry at him for allowing this to happen to me 'again'. But he said it was necessary. Told me to forget.

I see more aliens pass us in the hall. Again, it is as if I was a ghost. I asked my guide to please explain this place to me. He told me it was a very sensitive place and I would be brought back again in the next few years.

I again asked where I was and he told me I could not be told for my own safety. We then got into the small transit car and it took us to the other side. It was there that I saw the most disturbing things of all. I saw what looked to me to be people of all different types standing up against the wall inside a clear casing-like chamber. I went closer and it looked 'as if' they were wax figures. I could not understand what I was seeing. I also saw animals in cages. They were alive..."

At this point the 'guide' escorted Christa to the elevator and up through the various levels, following which the transit car took her to the waiting alien craft, at which point she was returned to her home some three hours after her abduction experience had begun.

Incidentally, Christa claims to have also experienced contacts with human-like beings from other worlds. One alien by the name of 'Maijan' who has dealt with Christa all her life has always worn an emblem of a feathered serpent, possibly symbolic of the ancient Mayan deity Quetzalcoatl. He also claims to have ancestors from the Aztec and Mayan race, as do several of the 'Telosians' inhabiting the colony under Mt. Shasta, California.

Christa Tilton admits that of the human-like Pleiadians and Lyrans she has encountered [aside from her encounters with short and tall Greys] range from the strict non-interventionists to the imperialistic factions who believe

that conquering planet earth is justified as a means to subdue their perceived enemies on or below the surface of this planet.

This might imply that the 'Draconians' have, as many sources claim, maintained underground command centers beneath the surface of planet earth -- from where they direct many of their interventionist interstellar activities.

In addition to the above, Christa Tilton answered some questions in regards to her own experiences. These questions and answers follow:

INTRODUCTION BY CHRISTA: I've been investigating underground bases and Dulce -- actually underground bases all over the world -- since 1987... I've had some good experiences and I've had some bad experiences [with aliens, etc.]

QUESTION: Have you seen any people who were being held captive underground, during your abductions to Dulce and other bases?

ANSWER: First of all let me state [that] there is more evidence NOW to prove that a base DID indeed exist back in 1987 when I was abducted (About 8 years following the Dulce wars, after which joint-interaction ceased for a period of two years), and it was in the process of being dismantled.

A lot of times the government will have underground bases for different purposes, and then will shut them down, board them up, concrete them in or whatever, and go on and built another base somewhere else.

You asked me did I see any people being held captive during that abduction to Dulce? I remember seeing some individuals as I was walking by. They looked as if they were in suspended animation. I went up to the clear casings that they were being held in. I put my hands on the casing and leaned towards them to see if I could get some kind of a response. I did not. I could not discern whether they were dead or alive at that point in time. They were just not moving, and I could not see whether or not there was any fluid.

I think that the casings were free of any fluid in this particular case. As far as my being taken to any other bases right now, I'm not going to comment on that because I'm still researching that. There has been speculation by, and information from, an Air Force officer at KIRTLAND AIR FORCE BASE that I along with some other women and men have been, more than likely, abducted and taken to the underground research facility near Kirtland AFB.

It's in the Manzano mountain range south of KIRTLAND AFB where the nuclear testing was going on at that time. (NOTE: KIRTLAND AFB is the base where the 'division' within the Intelligence Community over the Dulce facility and related joint-interaction projects seems to have begun.

Q: Did any of your alien or human contacts mention the Dulce Wars?

A: No. The alien beings that I came in contact with while underground did not speak to me. The human contacts did but no, they did not mention any kind of wars going on there. So at that particular time I was not aware of any kind of a power-struggle going on. I was just taken there for a specific purpose I think, and once that was done I was rushed out of there and I don't think any kind of knowledge like that in particular would have been given to me, there wouldn't have been any reason to give it to me.

Q: What kinds of reptilians, if any, have you encountered?

A: I am almost virtually positive that... I don't believe I have come across any reptilian aliens at all. The only types that I've been associated with most of my life have been small grey aliens, the ones that I call workers.

These are beings that I believe are soulless beings that are workers for an established alien race. They are given certain chores, certain jobs, just like we would if we worked for a large company. There are some taller Grey alien beings that I have encountered. Even though their eyes are large and dark, they don't have that 'reptilian' look. I know.

I know what you're talking about and no, I really haven't encountered any of those. (Of course from many other accounts, most of the 'Greys' are reptilian BASED clones which have assimilated other genetics from insectoid or even plant-like life-forms. Outwardly they -- the clones especially -- do not normally appear obviously 'reptilian', which is likely the reason why they are most commonly used to 'interface' with planetary intelligence agencies. The "established alien race" that the Greys are working for, according to many sources, are the taller more 'reptiloid' appearing species including the "white Draco" -- reside within levels six and seven, levels which Christa does not recall entering.

Q: Do you know of any other bases that researchers may be unaware of?

A: That's a great question, really, because right now I'm working with two individuals from Great Britain. They're two wonderful researchers who have been associated with Timothy Good.

Yes, I am aware of many, many, many underground facilities or bases that are being used for different purposes. Most of the underground bases are being used for covert purposes or otherwise purposes involving governments who are doing certain types of testing that they consider would be safer to do underground.

And then there are the bases, one in particular north of Tucson, Arizona, where I'm almost positive I was taken to, it goes under the cover or name of "Evergreen Aviation". They have all the planes there and everything, but what I found during my ten years of research is that this is a CIA-backed or based facility.

I got very, very close to the facility, I climbed over the wired fence and sneaked in with a pilot friend of mine not long ago and got some great photographs of some black helicopters. These black helicopters were unmarked.

There were other types of aircraft there, and so we really believe that there are many bases in many states. I've heard of bases in almost every state here in the United States. Now the two individuals that I'm doing work for or research with in Great Britain especially are researching underground bases in America and in Great Britain.

I guess they contacted me because they felt like there was a tie-in or some kind of connection, and that it would be a good thing to work together and share information and see what types of facilities we can find out about. In a lot of the facilities they are doing medical testing, some are actual laboratories like Los Alamos laboratories.

They do massive amounts of covert work for Black Projects of our own government, so we're talking about installations, underground and above ground, that are doing things that we probably have no idea about. We hear rumors of course of different things that are going on. What I would venture to guess is that more than likely these rumors have been proven about 90% of the time to be true.

Q: My belief is that the Greys operate from base animal or predatory instincts in their agendas to increase their power-base and exploit other cultures, and that they will continue to do so as a collective until they are stopped by force. Some of the Greys I believe might be 'tamed' by humans so to speak, and attain a degree of emotional individuality IF they can be severed from the collective HIVE mind. What are your views on this?

A: I agree with you on most of that... Certainly the Greys seem to do things like a massive collective consciousness. I've noticed that they do things together, there is almost no discussion among themselves. They seem to be working on projects or on certain things that are given to them by higher-ups, or higher alien beings and/or humans.

I really couldn't tell you. I have my doubts that humans would be able to 'tame' any kind of alien intelligence here on earth. If indeed it looks like humans are working among the Greys together, that more than likely it was because of a pact or some type of a government agreement.

I believe these aliens have come here for reasons, and certain individuals in the government have been given orders by their higher-ups to either give them opportunities to work alongside of these [aliens] for maybe a one-world purpose. Unless it could be shown to me to be true that the humans tamed these Greys that were working along-side with me, or on me, that would be very difficult for me to believe.

Q: Have you had encounters with any Nazi-type aliens like those described by Barney Hill, Alex Christopher, Vladimir Terziski and others, alien 'fascists' who date back to the secret Nazi flying disk experiments and who are allegedly working with the Greys and Reptiloids?

A: I've heard of these Nazi aliens. Of course where I first heard about them was from TAL LeVesque back in 1987. No I have never come in contact with what I would call Nazi type aliens although since most of my experiences have involved medical experimentation, genetic experimentation on me and my daughter or family, I would have to say that it reeks almost of... If you think about the medical experiments that were done on the Jews during the Holocaust, that is what I equate some of the experiments that happened to me with.

It's strange because I'm part German, I come from a family that originally came from Germany, so I do have some German blood in me, but I'm not leaning one way or the other and as far as being a bigot is concerned, I'm very open to all races, creeds, colors of people working together to establish a wonderful world, if that would be possible. But anyway, no I have not encountered these Nazi types, and I've certainly heard a lot about them, I've heard they are very mean-spirited aliens, I don't know what their agenda is... Since I've not had contacts with these types I really have no reason to do any research on them, and also the same goes for the [tall] reptilians, although many friends and other researchers have contacted me telling their tales about reptilian alien races...

Q: What are your views of a possible CONGRESSIONALLY backed take-over of the Dulce base in the future, and what would be your views on dealing with the problem supposing the Greys don't surrender?

A: Through all of the research that I've done, and all of the proof that I've come up with the many times that I've been up there poking around with researchers and other individuals, we're almost positive now -- I don't know if you've even heard, you may have heard the rumor, or thought it was a rumor -- but I am of the belief system now that this base is or was deserted and is no longer being used by our government.

For what reason I'm not sure. I believe a lot of it had to do with -- if there was indeed a military action there, which we have found proof of. We found some spent military cartridge shells up near where we think one of the base openings is.

We found C-Ration cans, we found different types of antennas that the government would have used for communications. These are things that have been found up in these mountainous areas. If you've ever been there you'll know what I'm talking about. These things tell me and my research partner that indeed there was some type of a military response there in the past.

The areas I speak about, that my research partner who lives in the area claims were some of the openings to the base, have been concreted, cemented up. Now that's been done by somebody.

So we know that some type of government official company... we believe it was a CIA-backed organization that was there... There is an area with a ranch just north of the Archuleta mesa area that we've been unable to track or find the individuals who have owned this property now for many years. What we've been told by the individuals who lived in or around the area, is that there is a landing strip on that particular property, there are large towers.

I did get onto the property, and close up enough to get pictures of these bullet-proof towers that were sitting on the property. There were about 20, and there are only 5 there now. We're wondering why they were taken out, and where were they taken.

Anyway I've got pictures of those. These are not just fire towers. Some people try to explain them away by saying "Oh, those are just so our ranchers could go up into the towers and look for fires," and things like that.

The strange part about this is that you walk up to the towers and there is dark black glass... you can't look in to see, and it's bullet proof. And what's strange is the opening. You are unable to get into these towers.

We don't know if they were just put there for show, we don't really know exactly what they are, but we believe they were placed there for some reason. We have no understanding of that. There have been sightings of planes, small Lear jets landing in and out of that area over the years.

Nobody in the town of Dulce seems to know who owns that property... My research partner did track down someone who did own the property over 20 years ago, but after that it seemed to go into covert hands.

The property also had what looked like a small wooden house. You could just walk in there, it's been evacuated and there's nothing in there. This type of facility or front for an underground base in that area would be perfect, because this area was cordoned off by what we believe at one time was an electrified fence which they said was used to keep the cattle out.

We believe that it was used for another purpose because of the signs posted all over -- NO TRESPASSING, and these were the types of signs that you would see up near AREA-51, and so we have to wonder what was going on upon that property. I don't know if you've ever seen the movie "THE ANDROMEDA STRAIN", I saw it the other day.

The underground facility that they went to [in the movie] was stationed on kind of a mock-up farm, where they went into the farm house and went into something like a tool shed, and then all of a sudden this elevator starts going down and down and down. And what they found once they went down was a massive underground biological testing facility.

I have to believe that these types of facilities are all over in every state. So then, back to the question. If there was a military takeover it already happened, and the base was closed... Again there's no proof there. Some of the Indians who live on Jicarilla Apache land, these people are very closed, they don't talk to outsiders. The information that I got was only from an inside source, and I can only tell you what one Jicarilla Apache Indian told this friend of many years there.

He said that he was going up through the mountainous areas there, up through the Archuleta mesa and back into the hills, and was walking along-side of a ledge. All of a sudden he felt some dirt falling on his head.

And so of course, if you were walking around in this deserted area and you felt something fall on your head, your immediate response would be to look up. And he did, he looked up and he said what he saw horrified him.

He's a man in his 60's. This man looked up and saw... this is what he told his friend, "I saw a grey being with large black inky eyes staring down at me over a ledge, and it looked like a large rock had been swiveled out, was sticking out of the side of the mountain." And he did a double-take, he looked away like someone who would rub their eyes and say, "Oh, I'm just seeing things," but then he looked back up and he saw it again.

Well this time he said he took off and he ran, he was running for his life. He was very, very frightened, scared, and what's strange is that this man is friends of the men high-up in the Jicarilla Apache tribal council, but he has kept this secret from them.

Q: Have you been taken to any other planets or spheres during your abductions?

A: Not that I know of, however I remember that I was taken to some type of large massive ship, it had to have been a mother ship. This thing was massive, it was miles and miles and miles long. I'm not sure exactly where I was. I received some instructions while I was there.

There were "light beings" there. They looked like angelic beings, only without the wings. They were wearing long robes, and I was taken into an area where they had a podium and a teacher that came out and was teaching the people who were there. These people were human, I did not see any aliens [greys] at THAT time, so I'm not sure exactly where I was.

Q: Did you ever get to see what was inside the 'tanks'?

A: No, not during the Dulce experience. I started to walk up to the tank. It smelled very foul. It was an odor that only I can identify as being close to a sulfuric type of odor. I remember when I first went in to the medical field we were invited downtown to view an autopsy, and the formaldehyde they use there has a sickening sweet smell, it's a smell that is very difficult to try and explain to somebody who has not smelled it before, but I can say that it smelled a lot like that.

The officer, the military man that was with me, guiding me, would NOT allow me up to the tank to look inside. I can only speculate that there was something in there that may have been frightening to me, because he reacted very quickly to stop me.

You asked if there were both breeding and feeding tanks. I believe so, because from what I've been told by some of the other women who saw these tanks, some of them saw body parts inside. The type of tanks that I saw were used for breeding and cultivation of small alien beings. The only thing that I can describe it as is of being like a fake womb.

A woman carries her child in her uterus, well these types of breeding tanks that you're talking about were used to cultivate the fetus' that they extract from the individuals that they abduct and take there. They extract the fetus like they have done with me MANY times, and I believe they place it in this type of a tank, a glass looking breeding tank.

Q: What do you think most of the hybrids feel about the position they are in?

A: That's such a very good question and not many people ask that... I myself being a hybrid have felt that I do not fit in anywhere. I still feel like I don't "fit in" to this day. I know I don't, I know I'm different, and I don't try to tell everybody that either. I just have accepted it and go on with my life, but I can assure you that every hybrid I've spoken to has told me, has tried to explain to me the emptiness and the feelings that they feel. They feel almost like they don't belong here on earth. I certainly feel that I don't belong here.

Q: If the outer world gets a hold of the Dulce technology and begins using it to colonize other worlds, could this alleviate the population, economic, environmental and other problems that this planet faces

A: I believe without a doubt that we have been working on projects to colonize the moon, underground, and also to colonize Mars... I've talked with scientists, I've talked with former NASA astronauts who believe without a doubt that this is what's going on. They don't feel like it's anything alien, some of the astronauts say they felt like, well this is just a technology that we've developed on our own, and that certainly population is a problem that you have to think about way in advance and that humans have come to all of these conclusions themselves.

I think that we're running with it, and we've already started. Like with the Biosphere, a lot of people think that that is just for learning about our ecology and things like that, plants, animals and all of that. I know that was a front.

I know of a lot of things that went on underground there. That is also an underground facility, it's a massive facility and it's a wonderful facility. The technology there being tested was alien technology.

All this will be used when they start to colonize the moon and Mars. These are the two 'planets' right now, actually the moon not so much being a planet but a satellite of earth, but certainly it's a stepping-stone away from earth to other places, and this is what's going on, I have no doubt about it.

I've talked to too many scientists who've worked on covert or black projects for our government who have said that's exactly what we're doing.

I really believe that we don't have much longer here as a people to survive on earth, the climate will be vastly changing, so we have to have the technology to go somewhere else. That's what many of the aliens did themselves [long ago].

The aliens that I've dealt with, the Ones who came from the constellation of Lyra, they actually had a massive explosion on their planet. They had to evacuate and migrated to the Pleiadian constellation where they knew other alien civilizations were already living.

There are many different types of Pleiadian aliens, I cannot stress this enough to people who say, well there's only one Pleiadian race. Some of 'my' people also came into our system and settled on Mars, but something happened on that planet that forced them to go underground to live.

Q: What would you consider the greatest weakness of the Greys to be?

A: I can tell you right now that the main weakness of the Greys is that they have no soul, they are soulless. Do not allow them to tell you otherwise.

Some of them have been known to try to impart some type of [false] religious philosophies on people that they've abducted, and the thing is you have to realize that these aliens have their own agenda, and it's not something that I feel is a positive one really. So I have found out from dealing with them most of my life, they are soulless, they have no soul.

When it comes to my religious beliefs or background -- I'm not afraid to say it, I'm a Christian, I believe in God, I believe in one ultimate being... God, who created all, all alien beings of all kinds... all different constellations where people have COLONIZED throughout the universe... beings, animals, things we probably have no idea about.

Certainly I have to believe that the Greys are, the only way I can describe it is that they are an empty, empty case. There's nothing there other than a superior technology type of brain apparatus up in their skull area. Otherwise they are of no use to us really, they are really of no use. They are used to impart different technologies and give us information, but as far as trusting them, I do not trust them as far as I could throw them.

Q: What do you think our greatest strength as human beings is?

A: Well, our greatest strength is our belief in God... our greatest strength is that ability... and our only connection with each race is our connection with that one Supreme Being, God. Now I do believe that God saw at some point in our history the need for someone to guide us into the positive way of living, I believe that Jesus was born as an example of the way that God would want us to live our lives.

I believe in angels. I have had several close calls where I can only state that these angels have appeared out of just nowhere and saved my life, so I just have to believe that these are Gods beings [servants]... they're wonderful.

Witness Report #2 Story of Thomas Castello

These tanks were also depicted in a set of controversial papers called the "Dulce Papers," which were allegedly stolen from the Dulce underground facility along with over 30 black and white photos and a video tape. Castello, the mysterious security officer who took the papers claims to have worked at Dulce until 1979 when he decided that the time had come to part company with his employers.

Using a small camera, he took over 30 photos of areas within the multi-level complex. He collected documents and removed a security video tape from the Control Center which showed various security camera views of the hallways, labs, aliens, and U.S. Government personnel to take with him. Then, by shutting off the alarm and camera system in one of the over 100 exits to the surface, he left the facility with the photos, video, and documents. The "originals" were hidden after five sets of copies were made.

Thomas was ready to go into hiding. But, when he went to pick up his wife and young son, he found a van and government agents waiting. His wife and child had been kidnapped.

He had been betrayed by K. Lomas (a fellow worker). The agents wanted what Thomas had taken from the facility in order to get his wife and son back. When it became apparent to him they would be used in biological experiments and were not going to be returned unharmed, he decided to get lost. That was over ten years ago. How did Thomas get involved in all this covert intrigue?

Thomas was in his mid-twenties, when he received top secret training in photography at an underground facility in West Virginia. For seven years he worked in high security photography in the Air Force. In 1971, he left and went to work for the Rand Corp. in Santa Monica, California. In 1977 he was transferred to the Dulce facility. He bought a home in Santa Fe, New Mexico, and worked Monday through Friday. He commuted to work via a deep underground tube-shuttle system.

At this time, a fellow researcher was working security in Santa Fe, N.M. and was privately investigating UFO sightings, animal mutilations, Masonic and Wicca groups in the area. Thomas had a mutual friend who came to Santa Fe in 1979 to visit both the researcher and Thomas. This visitor later viewed the photos, the video tape, and documents taken from the Dulce Base. Drawings were made from what was seen and later circulated in the UFO research community as the "Dulce Papers."

Thomas alleges that there were over 18,000 short "greys" at the Dulce Facility, and that he saw reptilian humanoids. A colleague had come face-to-face with a 6-foot tall Reptoid which had materialized in his house. The Reptoid showed an interest in research maps of New Mexico and Colorado which were on the wall. The maps were full of colored push-pins and markers to indicate sites of animal mutilations, caverns, locations of high UFO activity, repeated flight paths, abduction sites, ancient ruins, and suspected alien underground bases.

The multi-level facility at Dulce is reported to have a central HUB which is controlled by base security. The security level goes up as one descends to lower levels.

Thomas had an ULTRA-7 clearance. He knew of seven sub-levels, but there may have been more. Most of the aliens supposedly are on levels 5, 6 and 7 with alien housing on level 5.

The only sign in English was over the tube shuttle station hallway which read "to Los Alamos." Connections go from Dulce to the Page, Arizona facility, then onto an underground base below Area 51 in Nevada.

Tube shuttles go to and from Dulce to facilities below Taos, N.M.; Datil, N.M.; Colorado Springs, Colorado; Creed, Colorado; Sandia' then on to Carlsbad, New Mexico.

There appears to be a vast network of tube shuttle connections under the U.S. which extends into a global system of tunnels and sub-cities.

At the Dulce Base, most signs on doors and hallways are in the alien symbol language and a universal symbol system understood by humans and aliens. Thomas stated that after the second level, everyone is weighed in the nude, then given a uniform. Visitors are given off-white uniforms; jump suits with a zipper. The weight of the person is put on a computer I.D. card each day. Any change in weight is noted; if over three pounds, a physical exam and X-ray is required.

Scales are located in front of all sensitive areas and are built into the floor near doorways and the door control panels. An individual places his computer I.D. card into the door slot, then enters a numerical code onto a keypad. The person's weight and code must match the card or the door will not open. Any discrepancy will summon security. No one is allowed to carry anything into sensitive areas. All supplies are put on a conveyor belt and X-rayed. The same method is used in leaving sensitive areas.

All elevators are controlled magnetically; there are no elevator cables. The magnetic system is inside the walls of the elevator shaft, there are no normal electrical controls. Everything is controlled by advanced magnetics, including lighting. There are no regular light bulbs and the tunnels are illuminated by phosphorous units with broad structure-less emission bands. Some deep tunnels use a form of phosphorous pentoxide to temporarily illuminate areas. The aliens won't go near these areas for reasons unknown.

Level 1 contains the garage for street maintenance. Level 2 contains the garage for trains, shuttles, tunnel-boring machines and disc maintenance. The studies on Level 4 include human-aura research, as well as all aspects of telepathy, hypnosis, and dreams.

Thomas says that they know how to separate the bioplasmic body from the physical body to place an "alien entity" life-force-matrix within a human

body after removing the "soul" lifeforce-matrix of the human.

Level 6 is privately called "Nightmare Hall." It holds the genetic labs, where experiments are done on fish, seals, birds, and mice that are vastly altered from their original form. There are multi-armed and multi-legged humans and several cages (and vats) of humanoid bat-like creatures as tall as 7-feet. The aliens have taught the humans a lot about genetics; things both useful and dangerous.

The Grey and reptoid species are highly analytical and technologically oriented. They have had ancient conflicts with the Nordic humans from other space societies, and may be staging here for a future conflict. Intensely into computing and bio- engineering sciences, they are led to doing reckless experiments without regard for what we consider to be ethical and empathetic conduct toward other living creatures.

Principal government organizations involved in mapping human genetics, the so-called genome projects, are within the Department of Energy (which has a heavy presence on the Nevada Test Site); the National Institute of Health; the National Science Foundation; the Howard Hughes Medical Institute; and, of course, the Dulce Underground Labs which are run by the DOE.

Thomas had revealed that the chief of the genetic experiments for Los Alamos and Dulce is Larry Deaven.

According to Thomas, the alien androgynal breeder is capable of parthenogenesis. At Dulce, the common form of reproduction is by polyembryony. Each embryo can, and does divide into 6 to 9 individual "cunne" (pronounced cooney, i.e. siblings).

The needed nutriment for the developing cunne is supplied by the "formula," which usually consist of plasma, deoxyhemoglobin, albumin, lysozyme, cation, amniotic fluid and more. The term "genome" is used to describe the totality of the chromosomes unique to a particular organism (or any cell within an organism), as distinct from the genotype, which is the information contained within those chromosomes. The human genes are mapped to specific chromosomal locations. This is an ambitious project that will take years and a lot of computer power to accomplish.

It was when Thomas encountered humans in cages on Level 7 of the Dulce facility that things finally reached a climax for him. Row after row of thousands of humans, human-mixture remains, and embryos of humanoids

were kept in cold storage. He says, "I frequently encountered humans in cages, usually dazed or drugged, but sometimes they cried and begged for help. We were told they were hopelessly insane, and involved in high-risk drug tests to cure insanity. We were told to never speak to them at all. At the beginning we believed that story. Finally in 1978 a small group of workers discovered the truth. That began the Dulce wars."

Thomas also says the aliens don't want the land, the gold, the minerals, or water that we possess, nor even the human or animal life. What they do want is magnetic power that surges on and through the Earth. The aliens harvest this magic power in a way unknown to us. Thomas says the aliens recognize this power as more valuable than any other commodity on our globe.

It may be unpalatable to digest or believe Thomas' story. In fact, it seems like part of a living nightmare. There is evidence that something strange does go on at Dulce. Does Thomas have the answer? There may be a terrible truth hidden behind the continuing phenomena of UFO sightings, abductions, and animal mutilations. Our government intelligence agencies have had an ongoing watchful eye on all UFO activities for many decades now. This extraordinary phenomenon must have an extraordinary explanation. We may be only one outpost in a vast interstellar empire.

The following is a list of questions that were directed to former Dulce Base Security officer Thomas Edwin Castello approximately a year before his death [or disappearance]. They are followed by his responses:

QUESTION - When exactly was the [upper human-occupied level of the] Archuleta installation constructed?

ANSWER - I heard Dulce was started in 1937-38 by the Army engineers, enlarged over the years, most recent work was completed 1965-66 to connect tunnels to the Page [Arizona] Base, site of one of the older underground facilities. The four corners base is called PERICA. Most of the Native Americans [the Indians] living in that area are aware of that base, and could tell us about the underground life forms that frequently are spotted near those communities, Bigfoot, etc.

Q -- By what means was the upper installations constructed? Are you familiar with the alleged developments made by the Rand Corporation of a

highly-efficient bore or mole machine capable of melting rock using nuclear powered wolfram-graphite tipped 'drill-cones'?

A -- According to several senior maintenance workers, part of it was blasted by nuclear devices in the sixties. There are sections, like the shuttle tunnels, that were formed by an advanced tunneling machine that leaves the tunnel walls smooth. The finished walls in those tubes resemble polished black glass.

Q -- By whom was the Dulce installation originally constructed?

A -- Nature started the caverns. The Draco [reptilian humanoids] used the caverns and tunnels for centuries. Later, through RAND Corporation plans, it was enlarged repeatedly. The original caverns included ice caves and sulfur springs that the 'aliens' found perfect for their needs. The Dulce caverns rival Carlsbad caverns in size.

(Note: Carlsbad caverns and especially the adjacent Lecheguilla caves are 'officially' among the largest and deepest in the world, with several 'leads' that remain to be explored by professional speleonauts.)

Q -- Are the various electromagnetically-controlled air or space craft -- that have been seen leaving from and arriving at Mt. Archuleta -- manned by humans, the 'alien entities', or both?

A -- Archuleta Mesa is a minor area... the craft leave and are stored in five areas. One is SE of DULCE, one near Durango Co., one at Taos, N. M., and the main fleet is stored at LOS ALAMOS [under].

(Note: Thomas Castello is probably referring to the 'joint-operational' fleet. From combined sources however it appears as if Dulce is absolutely SURROUNDED ON ALL SIDES by 'alien' bases, and that Archuleta peak -- although apparently the central NEXUS of the entire underground network -- is nevertheless just one part of an overall complex that some claim is nearly the size of Manhattan!

One source has indicated that there are chambers a few hundred feet below the very town of Dulce itself that are part of level one of the facility. This close proximity may explain why it has usually been described as the 'Dulce Base'.

Apparently even with his high-security clearance, Thomas Castello was only familiar with one part of the overall mega-complex which underlies the area. Whatever amount of activity is taking place there, different sources seem to

indicate that the town of Dulce nevertheless lies over a major crossroads, convergence or 'intersection' area of alien activity even though the 'core' of alien activity has been extended to Los Alamos.

Los Alamos and the mountainous regions east and southeast of it in and around the Santa Fe National Forest seem to be the MAJOR 'nest' of Reptiloid/Grey forces in North America, although there is also a large number of 'dens' scattered throughout the underground networks between Dulce and Area 51.

Dulce seems to be a major 'through' point for extraterrestrial and subterranean reptilian activity, a central 'infiltration' zone for surface operatives, as well as an operational base for abduction-implantation-mutilation agendas and also a major convergence for sub-shuttle terminals, UFO ports, and so on.)

Q -- Others have suggested that some of the entities below Dulce are not of 'extraterrestrial' ORIGIN, and that they are actually descended from saurian or reptiloid beings such as the Velociraptors or Stenonychosaurus Equallus -- a 'serpentine' race or races similar to that hinted at in the third chapter of the book of Genesis?

A -- Yes, some 'reptoids' are native to this planet. The ruling caste of 'aliens' ARE reptilian. The beige or white beings are called The Draco. Other reptilian beings are green, and some are brown. They were an ancient race on Earth, living underground. It may have been one of the Draconian beings that 'tempted' Eve in the Garden of Eden. Reptoids rightly consider themselves "native Terrans." Perhaps they are the ones we call the Fallen Angels. Maybe not, either way, we are considered the 'squatters' on Earth.

Q -- Some have suggested that the so-called underground 'E.T.' bases and tunnels may, for a large part, be literally thousands of years old... constructions of an antediluvian race which attained to a considerable level of scientific complexity, and who were destroyed by a Divinely-initiated cataclysm which took place after they attempted to merge their science with occult/supernatural forces. For instance some have suggested that the Bermuda Triangle phenomena may be the result of an out-of-control Atlantean experiment that led to a space-time disaster which produced "electromagnetic fallout" in the Triangle area and elsewhere after they had accidentally loosed powerful forces and energies into the world that they knew very little about. Do your observations tend to confirm or refute such a possibility?

A -- I'm not sure about the Divine part, but these 'aliens' consider themselves 'NATIVE TERRANS.'

Q -- Where do the little grey Aliens fit in?

A -- *They work for, and are controlled by the Draco. There are other grey skinned beings that are not in league with the Draco.*

Q -- Did you ever talk to any of the 'Aliens' at the Base?

A -- *Since I was the Senior Security Technician at that base, I had to communicate with them on a daily basis. If there were any problems that involved security or video cameras, I was the one they called.*

It was the reptilian "working caste" that usually did the physical labor in the lower levels at Dulce. Decisions involving that caste were usually made by the white Draco. When human workers caused problems for the working caste, the reptoids went to the white Draconian 'boss', and the Draco called me.

At times, it felt like it was a never ending problem. Several human workers resented the "no nonsense" or "get back to work" attitude the working caste lives by. When needed, intervention became a vital tool.

The biggest problem were human workers who foolishly wandered around near the "OFF LIMITS" areas of the "Alien Section." I guess its human nature to be curious and to wonder what is past the barriers.

Too often someone found a way to bypass the barriers and nosed around. The cameras near the entrance usually stopped them before they got themselves in serious trouble. A few times I had to formally request the return of a human worker.

Q -- Are there other sites tied-in to the 'shuttle network' other than those which you mentioned, and if so, where are the entrances?

A -- *WHERE!?! EVERYWHERE! THEY CRISS CROSS THE WORLD AS AN ENDLESS SUBTERRANEAN HIGHWAY. LIKE A FREEWAY, EXCEPT THIS ONE IS UNDERGROUND... The subterranean highway in America is like a freeway except its underground. That highway depends on electric motors for trucks, cars and buses for the paved roads, and it is for limited travel.*

There is another style of transit for freight and for passengers that is for rapid travel. That worldwide network is called the "Sub-Global System." It has "check points" at each country entry.

There ARE shuttle tubes that 'shoot' the trains at incredible speeds using a mag-lev and vacuum method. They travel at a speed that excels the speed of sound. Part of your question involves the location of entrances to that base. The easiest way to answer is to say every state in the U.S.A. has them.

Frequently, the entrances are camouflaged as sand quarries, or mining operations. Other complex portals are found on military bases. New Mexico and Arizona have the largest amounts of entrances followed by California, Montana, Idaho, Colorado, Pennsylvania, Kansas, Arkansas and Missouri.

Of all the state's Florida and North Dakota have the least amount of entrances. Wyoming has a road that opens directly into the subterranean freeway. That road is no longer in use, but could be reactivated if they decide to do so, with minimal cost. It's located near Brooks Lake.

Q -- Are there any 'bases' in the state of Utah? (Note: Thomas mentioned several areas surrounding Utah -- Colorado, New Mexico, Arizona, Nevada and Idaho, where there are 'connections', but little on Utah which according to some sources lies directly over one of the largest NATURAL cavern systems in North America, one that is said to reach deep beneath the Western Rockies as well as beneath the Bonneville basin) Have you heard anything about an alleged underground installation within the Wasatch Mountains...?

A -- Salt Lake, Lake Powell Area, Dark Canyon, Dougway Grounds, Modena, Vernal. All have exits there. Others too.

(Note: There have been many rumors of ancient 'tunnel' systems being intersected during the excavations of sub-basement levels below major industrial and mall areas in downtown Salt Lake City. Various stories surrounding these tunnels include: explorers who have entered the tunnels and never returned; reports of 'lizard people' down in the labyrinths; reports of greys working with humans on electronic equipment and massive building projects going on in huge caverns beneath the mountains to the east; reports of humans who are part of an Asian-based 'Agharti' kingdom who maintain colonies within the tunnels and caverns below -- and who are in conflict with the reptiloids, greys, and a group collaborating human fascists from a network of massive underground facilities beneath the Neu Schwabenland region of Antarctica; reports of men in suits having been seen pacing back and forth through large underground chambers carrying Uzi machine guns; reports of seemingly bottomless shafts; large tunnels strung with lights that are "big enough to drive a semi-truck through"; sections of tunnel walls that looked solid yet which one could put their hands through;

rooms which emanate a strange greenish phosphorescent glow; abductees who are taken below and encounter all types of aliens; discs that have been seen emerging from the mountains to the east and attacking incoming UFOs over the valley; Dungeons & Dragons fanatics who have been down in the tunnels and tell wild stories of hundreds of miles of maze-like passages; reports of connections to the tunnel systems via the sewer-drainage network especially underneath the downtown "Crossroads" area; reports of alien activity similar to that which has been described in connection to Dulce New Mexico; and reports of a huge cavern network that reaches beyond the border of the state in all directions.

A huge network that connects the underground systems of Nevada with those of New Mexico. There is a famous story which is not openly talked about -- there are two versions... both may be true.

In one version a Mormon Temple worker penetrated an underground tunnel below the 'square' in downtown Salt Lake City and traveled for some distance through a series of underground catacombs until running into a 'lizard' like man.

The creature attempted to attack him but the man escaped and managed to find his way back to the surface. He began telling other people what had happened and soon afterwards the 'government' arrived in the area and went in and closed off many of the tunnels leading to the sub-basements of the Temple.

Presumably there was some heated debates over how much of the underground system this denomination was allowed to control.

A similar dispute apparently occurred to the southwest where the LDS church maintained a large storage facility under Granite Mountain in Little Cottonwood canyon, within the upper levels of a vast network of caverns.

Fascist CIA elements and the Greys came in and took control of the larger caverns deeper within the mountain and ordered the 'vault' workers to stay out of the 'forbidden' areas -- and stated that the "U.S. Government" was now using them for "National Security" purposes and that it was their "patriotic duty" to maintain the secret.

The other version concerned a custodian who entered a tunnel near the cinemas area below the Crossroads Mall across the street and to the south from the temple square, while excavation was being carried out in a that part of the Mall.

The worker entered the tunnel and before long encountered a 'serpent' type man, beat a hasty retreat, and told his fellow workers what he had seen. The FBI and/or the local police soon arrived and sealed the tunnel.

Another story involved a young man who, along with a friend, had used a chain tied to his pickup truck to rip-up a manhole cover in the area near the 'Mall' and the 'Square'.

They navigated through a maze of sewer passages underneath and came to a shaft that descended into a series of 5 small 'rooms' one below the other, and from the bottom room a tunnel led south into a large chamber wherein they saw a seemingly bottomless shaft, a large southwest tunnel strung with lights and 'large enough to drive a semi through', and the footprints of some type of three-toed bi-pedal creature.

Other sources imply that early pioneers and settlers of the area who explored these tunnels came in contact with and in some cases even joined with some of the Telosian-Agharti-Melchizedek-Mayan underground colonies below the Salt Lake Flats, the Salt Lake Valley and the Western Rockies.

These subterraneans had formerly established territorial agreements with the Reptiloids and Greys before the aliens begun invading their subterranean lands below the intermountain west en-masse in the early 1900's.

The treaties were part of an attempt to stave off a possible inter-species conflict, as skirmishes between the humanoids [Teros] and reptiloids [Deros] within the cavern networks of North America had been increasing since the 1920's, 30's and 40's.

Because of a somewhat non-exclusive collective-mind with which these humans interacted, it was decided that one possible way to 'convert' the reptilians into becoming beings of emotion and compassion was to allow them access to the group consciousness. The reptiloids however, once given access, immediately began taking advantage of the collective and used it to CONTROL the humans on a subliminal basis.

The ease with which this occurred may have been enhanced by the fact that the Reptiloids and Greys were already operating as part of a collective or group mind, one which was far more complex than the Ashtar or Astarte collective itself which many of the 'Aghartians' depended on.

This suggests that the reptilian 'collective' or HIVE itself is absolutely void of any and all care, concern or compassion for human beings. Individual reptiloids operating distinct from the draconian collective might however be

'tamed' by other collective-free humanoids in some cases -- as some have reportedly been 'tamed' by the Andro-Pleiadian worlds.

If the non-humans could be severed from the 'collective' they might be deprogrammed and reprogrammed so-to-speak and even attain individual awareness and a degree of emotionalism.

In such cases it would not be advisable to give these creatures equal standing among humans, and absolute subservience and monitoring should be enforced even if means were found to sever them from the collective mind network. When dealing with the reptilian forces, unconditional surrender should be first offered, and if this is not accepted than direct military action would be justified especially in light of the many permanent 'abductees' whom the Greys and Reptiloids have taken captive [those who are still alive] to their underground systems.

Most of the treaties that the humanoids had made with the reptiloids 'down under' have since been broken... especially following the Groom Wars of 1975 and the Dulce Wars of 1979, during which time much of the underground U.S. base networks [which were funded by American tax dollars by the way] were taken over by the Greys.

Some sources have implied that the aliens took advantage of the chaos especially during the Dulce wars and commenced to invade and conquer several of the older underground colonies.

This apparently led to a rift in the 'Ashtar' collective, with many humanoids and hybrids splitting off and joining with the Andro-Pleiadian Federation non-interventionists, and many reptiloids and heartless humanoid agents splitting off and joining with the interventionists of the Draco-Orion Empire.

The Sirius-B system which -- aside from Arcturus and Sol -- has been the major center of 'Ashtar' activity, has since been shaken by this split between the two opposing Ashtarian factions and war had reportedly raged through the Sirius system for several years, according to some 'contactees'... an apparent reflection of the division within the underground networks of North America between the Pleiadian-backed Sirian humanoids and Orion-backed Sirian reptiloids which both had maintained operations within the underground levels before the "Dulce Wars" broke out.

The Dulce wars were just the mere tip of the proverbial iceberg when we consider that the overall events which happened at Dulce had a chain reaction effect throughout this whole sector if not the galaxy.

Before the division occurred, the reptiloids were invited to take part in 'peace talks' in Telos and elsewhere as an act of good faith, but the reptiloid-grey collectivists were more interested in expanding their empire and feeding their insatiable appetite for conquest than they were in making peace, although they agreed to peace treaties that they never intended to keep for 'Trojan horse' manipulation purposes.

There is a remnant collaboration such as that taking place in the underground facilities near Paradox Nevada where collectivist humanoids and reptiloids from Sirius and Sol still maintain a collaboration of necessity -- in order to establish a global control system, however a large number of humanoids within the underground systems are at war with the collectivist-interventionist Reptilian infiltrators who would otherwise 'assimilate' these humanoids into their collective through deception, espionage and mind control.

Q -- Does the Mt. Archuleta "shuttle system" connect with a shuttle system which allegedly radiates from Mt. Shasta in northern California?

A -- Yes. Mt. Shasta is a major site of Alien - Elder Race - Reptilian Race - Human meetings. Beginning with Grover Cleveland, every president in U.S. history has visited Telos City.

Truman was supposed to have visited the Lower Realms as a High Archon on Earth. He was supposed to have met the King of the World there, and gave him the "Keys to the U.S.A."

(Note: Whether or not the reigning 'King' of the Agharti realms at the time had benevolent or other motives, subjecting America to an outside super-power without Congressional consent would be considered high treason. Although unelected/appointed 'individuals' working within the Executive-Military-Industrial branch of 'government' might choose to do so of their own volition without Congressional or Senatorial consent, such an act cannot apply to the 'America' which is based on the Declaration of Independence, the U.S. Constitution and the Bill of Rights.

There are apparently two 'nations' occupying the United States, the traditional grass-roots 'America' established by the founding fathers and led by the 'Electorate' government, and the fascist Bavarian-lodge-backed 'underground nation' led by the 'Corporate' government which is contesting the original 'America' on its own soil. Some predict an inevitable civil [?] war between the Electorate/Constitutional/Surface government of the U.S., and the joint humanoid-reptiloid Corporate/National-Global Socialist/Underground New World Order government, which incidentally was

bought and paid for by American taxpayers and other unsavory money-making projects.

This war will apparently provoke an armed United Nations / New World Order invasion of the U.S.A. which, according to George Washington's famous 'vision' at Valley Forge in 1777, will ultimately end with an American victory as a result of Divine Intervention.

Something like this may be inevitable if FREEDOM is to be preserved on this world, and beyond. We should never forget however that the NWO corporate elite and their draconian masters intend to 'depopulate' the surface of this planet AND the underground systems as well.

According to one Navy intelligence source the 33-plus Masons intend to set the left-wing caverns and the right-wing caverns against each other in order to depopulate the underground realms so that they can impose absolute Bavarian-Draconian global control of 'both' worlds.

Q -- Did you notice any involvement of high-level Freemasons, Rosicrucians or Jesuits within the underground installation and/or with the aliens? (This question is based on the assumption made by some researchers that many of the Masonic lodges were, beginning about 1776, infiltrated by the Bavarian Illuminati.

Much of the Masonic world is ultimately controlled by the Bavarian-lodge-backed 33+ degrees of Scottish Rite Masonry, a 'Rite' which according to early Masonic authority Rebold can be traced back to the JESUIT college at Clermont in Paris -- a Rite which advocates the destruction of national sovereignties in exchange for world government, the destruction of religious and especially Judeo-Christian movements, and the destruction of the family-structure to be replaced by 'State' control of children, etc., as opposed to the more traditional Protestant-Christianized YORK RITE of Masonry which the SCOTTISH RITE has attempted to subvert since its inception into Masonry.

This question was also based on claims from a former 33rd degree Mason, James Shaw, that the Scottish Rite headquarters in the "House of the Temple" -- which lies at the northern apex of the pentagram-like street layout of Washington D.C. -- is filled with all kinds of indications of serpent worship in the form of murals, carvings, statues, etc., depicting serpentine figures. Actually, from what my sources tell me, not only are there degrees beyond the 33rd degree, but the 33rd degree itself is made up of two cores, an inner and outer core, the 33rd degree and the 33+ degree.

A - Yes I did, but that is a loaded question, and I won't comment further. I'm not a Mason, or member of any other secret fraternal group. There is one organization I am a member of [in the U.S.A.]. That group is commonly called the "Central Unit." It is a pleasure to tell you that I AM a member of the "Sub-Galactic League" of Costa Rica.

Q -- Is there any truth to the allegations that the CIA/'Aliens' have established 'bases' on the moon, and also Mars?

A -- I've HEARD that too, but I haven't seen proof with my own eyes. The 'aliens' do allegedly have bases on several moons of Jupiter and Saturn. The CIA operates in other COUNTRIES, but I've never heard they operate on other PLANETS (Note: Perhaps we should have referred to the CIA's superior agency, the NSA, whose personnel reportedly pilot the "black-budget UFOs" between the LUNA and DREAMLAND bases.)

Q -- Have you heard any hints or rumors suggesting that there may be lower levels beneath the ULTRA-7 level of the Dulce base, and also, where these might lead to and what they might consist of?

A -- YES. Your guess is as good as mine... Sure, there was lots of TALK but that doesn't mean it's there. However, I will tell you I saw elevators that were "off limits" unless you had an UMBRA or higher security clearance. At that base, information is supplied to me at a "need to know" basis ONLY! [My clearance was ULTRA-7]

Q -- Some insist that the U.S./Secret government has developed its own disk-craft based largely upon top secret antigravity experiments carried out by the Nazi-German scientists during World War II. Have you heard anything referring to this?

A -- When I was working in Photo-security, heard a lot of talk, never saw the proof, but once in the Air Force I developed a roll of film that showed a craft LIKE ADAMSKI'S, WITH A SWASTIKA ON THE SIDE.

(Note: A letter from 'R.J.M.' of Pennsylvania dated 1-31-91 stated: "...I have a lot of UFO videos. I also have 'THE SECRET LAND' [1947]. It shows Bunker's Oasis and says they discovered warm land at the South Pole.

One German author claims the Nazi's had a photo-finish FIGHT with Byrd. At the end of the movie, it says: 'Byrd's Intrepid 4,000 met and defeated ANTARCTICA'S TOUGHEST BATTALIONS.' Another source has stated that there were loses on BOTH sides, and the Battle for Antarctica against the Nazi's "Last Battalion" -- which had fortified themselves in underground

bases below the mountains of Neu Schwabenland, Antarctica -- ended in a stalemate.

Another interesting connection is the fact that the secret Nazi teams involved in the construction and operation of the underground bases below the mountains of Neu Schwabenland and elsewhere in Antarctica were called ULTRA teams. ULTRA is also the code-name for the DULCE base.

Q -- Tom, did you have access to the alien craft? Were you ever inside any of them?

A -- Yes, I frequently saw them in the garages, there are quite a few of them. The main fleet is stored at Los Alamos.

Yes, I entered several crafts. There were two things that stick in my mind, the odd spongy feeling of the floors, and the unusual pinkish purple color of the lighting.

The crew stated the floor becomes ridged in flight, and the purple tint of the lighting changes to bright blue white. The entire inside of the aircraft are scaled down in size, when compared to the average human. The halls were curved and narrow, but somehow, when inside it appears bigger than it looks. Certain areas, the outermost sections, almost felt and looked alive. I was never taken up in one.

Q -- Can you give me more information on the reptilian race, what do they do on the sixth level? [The area called Nightmare Hall.]

A -- The worker caste does the daily chores, mopping the latex floors, cleaning the cages, bringing food to the hungry people and other species. It is their job to formulate the proper mixture for the type one and type two beings that the Draco Race has created.

The working caste work at the labs as well as at the computer banks. Basically speaking, the reptilian races are active at all levels of the Dulce Base.

There are several different 'races' of aliens that work on the east section of level six. That section is commonly called "the alien section." The Draco are the undisputed masters of the 5-6-7 levels.

The humans are second in command of those levels. I had to ARGUE with one large Draconian 'boss' frequently. His name is difficult to verbalize,

Khaarshfashst [pronounced throaty kkhahh-sshh-fahsh-sst]. I usually called him 'Karsh,' and he hated it.

The Draconian leaders are very formal when talking to the human race. These ancient beings consider us a lower race. Karsh called me "Leader Castello," but it was used in a sarcastical way. However the worker caste is friendly enough, as long as you allow them to speak first.

They will answer if you address them. They are very cautious beings, and consider most humans to be hostile. They always seem surprised when they found many of the humans were open and trustworthy.

There is no fraternizing with the aliens off hours. It is forbidden to speak to any alien race [in the halls or an elevator] without a clear business oriented reason. Humans can talk to humans, and aliens can speak to aliens, but that is as far as it goes.

At the work site, however, it's different. There is "free speech" in the labs. The camaraderie found in the labs also reaches the computer banks section. In those areas, everybody talks to anybody. However, everything changes the minute you cross the threshold of the hall.

Instantly, all conversations become strictly formal. Hard as it was, several times I had to arrest someone, simply because they spoke to an alien. It's a strange place.

Q -- Exactly what first made you aware that something was wrong at Dulce? Seems to me that a place as obviously horrible as this one wouldn't need an Einstein to know that this is a crime site! What took you so long? Are you the guy who blew the whistle?

A -- There are several things you should know about. I took an oath, under the penalty of death, that no matter what I saw or heard I would never divulge the information.

Also, I signed a waiver that states I would willingly give up my life if I was found guilty of 'treason'. At the Dulce Base treason is "ANYTHING that mentions the details of daily operations at this facility, when outside the confinement of the base.

When I first arrived, a "need to know" policy was in effect. The story the 'honchos' told us was that "this is a Tri-Biotransfer Facility with Advanced Technology, doing advanced adventurous methodology for medical and mental gains.

Which is a fancy way of saying they do really risky things with human life just to see what would happen. If a medical cure happens, it will be heralded on the surface of the earth as a marvelous new cure, saying it was found after years of research at some well-known medical lab. The real story of the cure is never explained.

After all, the Dulce Base IS A SECRET FACILITY! These people are very good at what they do. They do not tell the truth about the unfortunate people that end up in "Nightmare Hall." I worked with aliens. With that in mind, you should get the idea of the secrecy and the security at that place.

Yes, I know this was not the usual hospital type job site, but in the beginning I 'bought' the whole package. I was reminded daily by intercom, in the elevators, that "this site does high risk advanced medical and drug testing to cure insanity, please, never speak to the inmates, it can destroy years of work."

I'm sensible, when doctors say don't speak to them, who was I to destroy the delicate situation? But one man somehow caught my eye. He repeatedly stated that he was George S---- and that he had been kidnapped and he was sure someone was searching for him.

I don't know why he sticks in my mind, I found I was remembering his face, thinking he sure didn't look or sound insane, but many inmates said that. The next weekend I convinced a friend of mine, a cop, to run a check on the guy, saying I had a run in with him and was curious.

I didn't mention the base at all. It was a sickening feeling when the computer confirmed that George S. was missing. What's worse, the cops thought he was just another guy that got tired of the daily grind and split. That was the beginning. Am I the one that blew the whistle? No. The next Monday, I searched for George, but he was gone. There were no records that explained what happened to him. It was another security officer that came to me saying he and some lab workers wanted an off duty meeting at one of the tunnels, [off the record].

Curiosity took over and I said OK. That night, about nine men showed up. They said they knew they were risking me turning them in but they wanted to show me some things they thought I should see.

One by one they showed records that proved many inmates were missing people. There were newspaper clippings, and even photos that they had somehow smuggled into the base. They hoped to smuggle them back out, without me turning them in to the honchos.

I could see the fear in their faces as they spoke. One man stated he would rather lose his life by trying, than to lose his soul by not doing anything at all. It was that remark that turned the tide. I told them about George and the things I found out about him. After a few hours we pledged to attempt to expose the Dulce Base.

They were right, Thomas didn't turn them into his commanders. Instead, he made the dangerous decision to quietly speak with one of the caged humans in an area nicknamed "Nightmare Hall". Through their drug induced state, he asked their name and their home town.

Thomas discreetly investigated the claim of this 'insane' human during his weekends out of the facility. He discovered through his search that the person had been declared missing in their home-town after vanishing suddenly, leaving behind their traumatized families, who followed dead ends and trailed flyers.

Soon he discovered that MANY of the hundreds, perhaps thousands of men, women and children [from ALL AREAS OF THE WORLD] were actually listed as missing or unexplained disappearances. Thomas knew he was IN OVER HIS HEAD and so were several of his co-workers.

All he could do, until somehow the situation changed, was to be alert and extremely guarded with his thoughts. The grey aliens' telepathic capabilities allowed them to 'read' the minds of those around them and if he revealed his intense anger, it would be all over for him and his new friends.

Q -- The name Nightmare Hall is descriptive, but surely there was a 'regular' name, what was it called in the manuals?

A -- *In the manuals it was called "The Vivarium". It describes Dulce Base as a "secured facility for tending bio-forms of all types." In their report it is retold as "a private subterranean bio-terminal park, with accommodations for animals, fish, fowl, reptile, and mankind." After SEEING this 'park' the name Nightmare Hall is far more accurate than the manual.*

The 'accommodations' for the inmates at Nightmare Hall fall short of the pretty picture the manual describes.

Q -- You mentioned one reptilian leader, Khaarshfashst, do you know anything about him, like where is he from? Is he from Earth or some other planet?

A -- His name means "keeper of the laws". They receive their name after they reach the "age of awareness". They do not recognize time as an important factor in "being aware" the way humans do. Upon their "age of awareness" they are cognitive of the station or position they are destined to fulfill.

At that time they chose or allow someone to choose their name. Their name will include the position they hold and several personally chosen letters. Each letter has a personal meaning, known only to the alien and the one that chose their name.

Since Karsh's name means keeper of the laws his name includes kaash [memory or keep, base word for 'Akashic' record] and fashst [law, base word fast or bind].

Reptilians choose to be not only private but secretive of the location of their natal place. To them birth, or emergence of life, is considered as one of the sacred rites of life. They consider Earth or Terra their "home planet", but several reptoids discuss several star maps.

Most of those stars were within the Milky Way. Within those star maps lies the stars and planets of the Planets of the Allegiance. Earth being one of the planets in their trade routes.

If any human asked clear questions about the Allegiance, the Aliens referred the questions to the Draco. The Draco in turn, referred the questions to their supervisor [me]. I did not have that information about the stars, because information was supplied on a "need to know" basis. I didn't 'need' that information.

Q -- Did any of the working caste join in the revolt? Could you give me some names?

A -- A few of the reptilian janitorial crew let us know that THEY knew WE were attempting to sabotage the work going on in the sixth and seventh levels. One of them, with the name Schhaal, secretly formed a small group of reptoids with the same mind set as my group (Take note of the similarity between this scenario and the NBC mini-series "V. Could this mini-series have had an actual basis in a bizarre reality?

Sshhaal took upon himself the danger of informing me. He was as open as is possible in a unique situation. On the day I found out about it, I was inspecting a camera near an exit tunnel. He approached, stooped down,

seemingly scraping some non-existent dirt, and he quietly said, "A few of us agreed that you are singular in your interest in missing-human reports.

If true, walk away. I'll reach you. If it's untrue, destroy my life now!" My heart almost leaped out of my chest, but I silently walked toward one of the wide halls. For the rest of my life I'll remember those words!

It was the first time I KNEW reptilians could have individual thoughts and opinions! Basically, they formed a uniform front with a small variety of interests. Or at least, that was what we had thought. It was a couple days before I heard from him again. As he walked beside me in the sixth level's infamous hall, I heard him say "Enter the exit tunnel on the sixth level, north, after your shift." The next few hours were long and filled with thoughts of betrayal, or worse, but I shouldn't have worried.

I contacted one of the original nine [resistance] men, and let him know, just in case. Gordon wanted to go with me, but I convinced him to wait a few feet from the exit and pretend he was having trouble with his cart [electric, like a golf cart].

When I got there, there were three of them. SSHHAAL formerly introduced FAHSSHAA and HUAMSSHAA [name base word is SSHHAA or assist]. With that, I quickly grabbed Gordon from the hall and the five of us talked and walked in the dark tunnels about three hours.

After that day, the joined resistance group got bigger and bolder. Ultimately, it ended when a military assault was initiated via the exit tunnels and they executed anybody on their list, human or reptilian.

We fought back, but none of the working caste had weapons, nor did the human lab workers. Only the security force and a few computer workers had flash guns.

It was a massacre. Everyone was screaming and running for cover. The halls and tunnels were filled as full as possible. We believe it was the Delta Force [because of the uniforms and the method they used] that chose to hit at shift change, an effort that killed as many as named on their list

(NOTE: If Thomas Castello is correct in his assertion, then based on his overall revelations, as well as the revelations of others such as Robert Lazar, Phil Schneider, etc., the Dulce Wars were the result of at least five overlapping factors or scenarios which converged at more or less the same time or played into each other.

This may have also involved a conflict of interest within MJ12 itself, and apparently involved different security forces including the Delta Force, Black Berets, Air Force Blue Berets, Secret Service, FBI Division Five, CIA stormtroopers and Dulce Base security.

The various factors which seem to have played into the Dulce wars would include animosity towards the Greys for their slaughter of several scientists and security personnel in the Groom Wars below Area 51 three years earlier as described by former MJ12 Special Studies Group agent Michael Wolf; encounters between aliens and human construction workers and security forces near Dulce as described by Phil Schneider; an attack on the Dulce base 'resistance' that was apparently ordered by die-hard collaborators in deep-level intelligence as described by Thomas Castello; an attempt to rescue several of our best scientists who had been captured by the aliens after they had discovered the "Grand Deception" involving a violation of the established treaties, that is the permanent abduction of thousands of humans to the Dulce and other bases for God only knows what purposes, as described by John Lear.

Could it be that MJ12 / PI40 was unaware of these abductees, yet their superior agency the BLACK MONK / MAJIC agency was aware and had agreed to an actual exchange of human life for technology?; and another factor would involve a dispute over whether human security personnel could carry flash guns as opposed to machine guns.

Q -- Tell me more about the flash gun. Is it difficult to operate, or is it like the weapon on Star Trek, that can stun or kill on different modes?

A -- *It is an advanced beam weapon that can operate on three different phases. Phase one, like Star Trek, can stun and maybe kill, if the person has a weak heart. On phase two, it can levitate ANYTHING no matter what it weighs. Phase three is the SERIOUS BUSINESS mode.*

It can be used to paralyze anything that lives, animal, human, alien and plant. On the higher position on the same mode, it can create a TEMPORARY DEATH.

I assure you, any doctor would certify that person is dead, but their life essence lingers in some strange limbo, some kind of terrible state of non-death. In one to five hours the person will revive, slowly; first the bodily functions will begin, and in a few minutes, consciousness followed with full awareness.

In that mode the alien scientists re-program the human brain and plant false information. When the person awakes, he 'recalls' the false information as information he gained through life experience. There is no way for a person to learn the truth.

The human mind 'remembers' and believes completely the false data. If you attempt to inform them, they would laugh or get angry. They NEVER believe the truth. Their mind always forgets the experience of re-programming.

You asked if the flash gun is difficult to operate. A two year old child could use it with one hand. It resembles a flash light, with black glass conical inverted lens. On the side are three recessed knobs in three curved grooves. Each knob is sized differently. The closer the knob to the hand the less the strength. It's that simple. Each knob has three strengths also, with automatic stops at each position. The strongest position will vaporize anything that lives. That mode is so powerful it will leave NO TRACE of what it vaporized.

Q -- Is the weapon called a Flash Gun or is there a different name in the manuals?

A -- *Everybody calls them Flash Guns, or more commonly "The Flash" or "my Flash" when talking about it. In the manual it is first introduced as the ARMORLUX Weapon. After that, it is explained as the Flash Gun.*

Q -- What type of security is found at the Dulce Base? What else is used against espionage or unauthorized entry?

A -- *I'll mention a few, but it would be nearly impossible to cover it all. The weapon, besides the Flash Gun, mostly used is a form of sonic.*

Built-in with each light fixture [and most camcorders] is a device that could render a man unconscious in seconds with nothing more than a silent tone. At Dulce there also are still and VCR cameras, eye print, hand print stations, weight monitors, lasers, ELF and EM equipment, heat sensors and motion detectors and quite a few other methods.

There is no way you could get very far into the base. If you made it to the second level, you would be spotted within fifteen feet. More than likely, you would become an inmate and never see the light of the surface world again. If you were 'lucky', you would be re-programmed and become one of the countless spies for the Ruling Caste.

Q -- According to certain reports, the Dulce Base is host to other aliens that live in level five. Is that true? Can the humans freely roam or meet one-to-one in the halls or is some type of protocol in effect?

A -- *There is protocol from the first time you enter the base and it MUST be followed every time you SEE an alien there. From the working caste, to the visiting aliens, to the Ruling Caste, there is a never ending check list of rules, law, and strict protocol. There is never a chance to roam on the fifth level.*

The alien housing area is off limits to any human. The Hub is surrounded by security, arsenal, military and CIA\FBI sections. The area past the security is one of the most secured areas because it houses so many classified files.

The entire east side of the fifth level is off limits except for security personnel holding ULTRA-7 security clearance or higher. The garage on the west side of the fifth level requires ULTRA-4 clearance.

Q -- Is there proof available that could confirm the allegations of the underground base, or are we just supposed to believe you?

A -- *Many people have asked that one. No, I don't expect people to believe with blind faith, there is tangible proof that has been seen, felt or inspected by quite a few folks. I'm in no position to go on a lecture circuit to explain to every person on a one-to-one basis.*

I am trying to stay alive. All I can do is state again, that Dulce is a SECRET FACILITY. They work HARD to make sure nobody can find the place. If everyone could easily find it, it wouldn't be a SECRET facility. I've explained the extreme security methods they use.

There is other proof available. There are five sets of copies in five different boxes in five different locations that hold complete proof of everything I have tried to explain.

Here is a list of contents of each box (delivered into the safe-keeping of five individuals known only to Thomas Castello and to the individual recipients): (A) 27 sheets of 8 x 10 photographs of Aliens, creatures, cages and vats. (B) One silent candid video tape, begins on the computer banks, shows the vats, multi shots of Nightmare Hall, two shots of Greys, one shot of the Terminal showing sign saying 'To Los Alamos' and about thirty seconds of the Shuttle train arriving. (C) 25 pages of diagrams, chemical formulas and schematics of alien equipment. (D) A copy of the new treaty complete with signatures. (E) 2 pages of original Alien documents signed by Ronald Reagan [as

governor of California], each page includes Reagan's signature. The ORIGINAL set mentioned above is sealed in one piece oxygen free heavy plastic box. That set includes: (A) 27 sheets of 8 x 10 WITH original negatives (B) The video tape, AND the original micro film, from which the video tape was copied. (C) The 25 original pages of diagrams [with notations], formulas, alien equipment schematics plus the schematics for the Flash Gun and MY Flash Gun. (D) The treaty with Reagan's signature plus seven other political signatures and four Alien signatures.

The working Flash Gun in that box is an extremely dangerous weapon. In the wrong hands, there is no limit on the danger it could inflict. That proof must be protected. But when placed in the hands of certain government agencies, it would not be treated as proof for an Alien visitation.

If I die, before it is proven, search for proof (after all, the Dulce Base and the other bases aren't going anywhere. Unlike UFO's themselves they are not "here today and gone tomorrow". Demand that the government admit it. If enough people demand it, they WILL find a way to explain the base, or at least explain why they must keep it secret.

There are MANY people that work at the Dulce Base that know me. I am challenging those co-workers to speak up, at least anonymously. Send a letter, or a telegram [or fax] to confirm what I have explained. In the name of the brave men, woman, children and aliens that died TRYING to let the public know what is going on at the Dulce Facility, EXPOSE that horrid place before thousands more innocent people are tortured and die unspeakable deaths.

Q -- What about the elevators, do they drop from the surface to the seventh level in a couple of seconds? Do you know anything about them? Are they electrically lifted? Everywhere on the surface world there are elevators made by Otis Elevator Company. Does that company make the elevators at Dulce?

A -- *I failed to notice what brand was available in the elevators at the base. I could tell you that there is no elevator anywhere at Dulce that drops from the surface to the seventh level. The security blue prints show the levels are 'stepped' down.*

Each level drops one floor only. Not even the Hub has an express elevator. After the third level, not only would you change elevators, you are weighed and color coded, before you re-enter the car. All the elevators are magnetically controlled, even lights in elevators, as well as all lights on all levels are magnetically induced.

The light bulbs are not the type bought on the surface, but a totally different type of light system. The illumination found there is a closer match to natural sunlight than any artificial light on the surface world.

The shape of the elevators is unique. If you have ever seen a Tupperware sugar bowl, you could see the shape copied in the elevator. Sort of like an open ended oval with another half oval on each side. The elevator shaft matches the shape perfectly. The magnetic controls are in the half oval shape. If you could stand in or close to the half ovals, you would feel the slight pull of the power of those magnets.

The motion is smooth and silent, there is a nearly unnoticed surge when the motion starts or stops. There are no cables needed, because the lift is magnetic, not electric. Since there are no cables in the elevator cars there is no chance of them falling.

Q -- I understand that certain groups of cleared individuals in the government are collaborating with alien groups. Is it known how many groups and of what type they are working with?

A -- *I don't know how many groups or what type they are working with.*

Q -- A mysterious security man calling himself agent "Yellow Fruit" says he worked at Groom Lake [Area 51]. The Security Officer states that he's been in contact with benevolent aliens, at the Groom Lake facility -- are you aware of such a group?

A -- *Yellow Fruit is one of the slang names for Yellow Jack [or Yellow Flag] that shows quarantine and caution in the labs. There are so many different slang names at Dulce labs that meant quarantine that the workers published a booklet to show the meanings.*

At Dulce, Yellowfruit are the lab workers [so called from the yellow light outside the decontamination chambers]. Banana is the older workers, lemon is the new guys and so on.

Q -- Is there an alien installation under Groom Lake or Papoose Lake at the Nevada Test Site, and are they conducting biological research at these sites?

A -- *Most of the stuff at the Groom facility deals with defense, but there is a large storage area in the tunnels that holds thousands of alien craft parts. From what I have heard, the medical tests at the Nevada Test Site are conducted by and for the Navy.*

Q -- According to my sources, the Aerospace companies have a secret underground installation in the Tehachapi Mountains, not far from Rosamond near Edwards AFB. Insiders refer to the Tehachapi Installment as the Ant Hill. They are experimenting with advanced technology such as antigravity disks. Some have seen basketball sized floating orbs patrol the facility, do you have any further information on this?

A -- *The California mountains [Tehachapi, Chocolate, Shasta, etc.] all have alien security methods and equipment. The basketball size orbs are used for unmanned patrol. They are silent, but when photographing living beings there is a humming sound. The glow that emits light is magnetic aura. This [light] is in the visible spectrum [3900 angstroms]. You can see the light, but the light does not reflect off any thing.*

Q -- Is there anything you can tell me about the moon - alien installations? Atmosphere? U.S. bases?

A -- *There is not much I can tell you there. I wasn't in the Lunar Program. I heard there was a LOT of equipment sent to the moon between 1959-1964 under "Project Whiteout".*

Q -- How do the aliens use magnetism? Do they use it as an energy source? Is there more we need to know about magnetism?

A -- *The aliens use magnetics for EVERY THING! They use magnetics as the basic structure for their energy source. The more you learn about magnetics, the better. The Human Race calls them 'magnets', the Aliens call them 'lodestar'. They have been harvesting lodestars [lodestones] for centuries. Not only that, they want ALL the magnetic power on Earth.*

They intend to continue harvesting that power, now and in the future. As long as we were only using magnetic power as an oddity, there was no problem. But in recent times, the human race has begun using magnetic power and finding more ways to utilize that commodity.

There was a treaty made. In the original treaty, the human race didn't mind at all, 'we' considered magnets as hardly more than useless. As people searched for another source for power, we turned to magnetics. The aliens wanted a new treaty. What could we offer? They chose land, underground mining rights, animals and humans for new experiments.

The general public NEVER KNEW about the treaty. The governmental heads of the world chose another treaty in 1933. This time 'we' got high-tech knowledge in exchange. So now, the more we use magnetics, the more they

claim humans, and the lands of the U.S.A. We were 'sold' in exchange for magnets. If you doubt it, look around -- there are token companies that 'really' utilize magnetic power, but are depending on electric based or ceramic magnets, NOT lodestar [magnetic oxide of iron] based magnets.

Q -- What do the aliens do with the cow blood and other parts from mutilated animals? Do they need these fluids for research or survival?

A -- The aliens use the blood and body parts for formula to keep them alive [their food] and for use in the growing vats, and for the artificial wombs. Plasma and amniotic fluid are the two most vital ingredients for their lives.

Also, the 'sap' of some plants can keep them alive for months. Most of the plants are parasitic in nature, but red grapes and okra plants can also be added to the formula to keep them alive, if they have no 'regular' formula.

Q -- Female abductees report being inseminated by aliens. Are they trying to hybridize our species?

A -- Yes, they are breeding slave-warriors for the upcoming war with the alien races. The serpentine races are in orbit around Earth, Venus and Mars.

Q -- Abductees have reported that the aliens can pass their bodies and that of the abductee through window glass. Is this a feat of magic achieved by advanced technology or is it a psychic power?

A -- The aliens have mastered atomic matter. They can go through walls like we go through water! It is not magic, just physics. We can learn to do the same thing. It has to do with controlling atoms at will.

Q -- Are you in communication with benevolent aliens or do you have contacts that are? If you are, can you tell us how we can communicate with their teams?

A -- I am not at liberty to discuss communications with any friendly alien life forms. I can tell you there is a friendly factor active in Costa Rica, I am in direct communication with that factor. I am an active member of the Sub-Galactic League of Costa Rica.

This organization, using a small satellite dish, a television set and ham radio equipment reached this factor. I might suggest that by using similar equipment and a low band frequency, you may reach the same factor.

Q -- Do you stay in the U.S.A., or do you live abroad? Do you work now? I know you have been on the run for several years.

A -- *Yeah, quite a few years. I visit the U.S., but it's really dangerous when I do. I've lived in several countries. I spent a few years in Mexico, working as a mercenary soldier. It's rough work, frequently living in the bush, eating whatever I can find. I spent time in South America, fighting the drug cartel [it's not the citizens, it's the secret government, top officials AND American alphabet boys -- CIA, FBI, etc.].*

I settled in Costa Rica, 'bought' a small house in Limon. Actually it is a shanty that someone abandoned. I paid the equivalency of \$11 to one of the local constables for the right to call it 'mine'. My name changes when I think someone is asking questions.

I've worked in one of the underground bases near the Panama border. It's in the mountains, not very far from a passive but 'active' volcano. It is not as fancy as Dulce, but the people are wonderful.

Q -- What is the best city in Costa Rica for an American to visit and maybe move to live?

A -- *None of them are worth anything [by comparison], but I like Limon. There is a real culture shock when you get past the tourist sections. Inside the urban areas, it's not so bad, but away from the beaten path the picture changes. There are no improvements in the shanties, no sewers, plumbing, or paved roads. But if you stay in the cities, and you don't mind the big difference in the cultures, the countries have a lot to offer. Nice weather, great beaches and beautiful trees with fruit growing everywhere.*

Q -- Are there any other security level names [other than 'secret' - 'top secret' - 'ultra']?

A -- *There are many other security clearances, here are a few, UMBRA, STELLAR, G2-7Z, TRIAD, UMT [Universal Military Training] and UMS [Universal Military Service], ASTRAL and SUB-ASTRAL. UMBRA is higher than ULTRA (Note: It may be conceivable that some of the higher security clearances are used for the joint human-alien interstellar projects.*

For instance Whitley Streiber described an abduction to another planetary sphere where he encountered ancient ruins, aliens and human personnel dressed in military kackies and carrying camcorders, automatic weapons, etc. Obviously such personnel would have to possess an extremely high security classification, such as "Universal Military Service" for instance.

Q -- Ever see a badge with 'MAJI'?

A -- No.

Q -- Since you have lived in Spanish speaking countries, it's obvious that you are bilingual. What other languages do you speak?

A -- Other than English, the only other languages I speak are Spanish and Eusshu, the common language [alien] spoken at Dulce. I speak Spanish fluently, and enough Eusshu to keep myself out of trouble. Shortly after I first transferred to Dulce, I took a crash course in Eusshu. Any one that plans to spend more than one week working at that base, they are wise to learn the basics. Otherwise, you are required to wait for an escort to get around. All the signs at that base are written in the universally recognized symbolic language. Eusshu is logical and easy to learn.

Q -- What are the eating habits of the aliens? Are they carnivores?

A -- That depends weather they are one of the grey worker caste, one of the reptilian worker caste, or one of the higher developed Draconian Leaders. Also, the created beings, replicants, type two being, or one of the really strange [genetic] mixtures.

I'll try to cover a little of each. The formula includes amniotic water, plasma and several other body parts [raw, usually bovine]. This nearly clear mixture with a texture of pureed peaches, and almost in that color. The greys make the attempt not to 'eat' around the humans, because the odor of it is VERY unpleasant to ANY human.

They can spend days or even weeks between feedings. The working caste of the reptilians eat meat, insects and a large variety of plants including vegetables and fruit. They prefer their meat raw and very fresh, but have learned to enjoy some cooked meat like rare beef steak.

Unlike the Greys, they eat frequently and usually carry or send for food on their breaks. The Ruling Caste is SECRETIVE about their foods. They have created several dietary myths that they carefully embellish when the chance arrives. One of their favorite legends involves one of their ancestors' ability to eat an entire flock of geese in one setting.

They RARELY eat in sight of any other species. They carefully choose their food, then carry their meal to their quarters. It was only when dignitaries arrive at the base did they join their meals.

They enjoy the same foods we do, and they have been seen secretly munching on a freshly found snail. The "human looking" replicants eat some cooked vegetables. They rely on vitamins and liquid protein for sustenance. If they have to eat on the surface world, they can eat whatever they are served, but as soon as possible they regurgitate.

Their digestive systems frequently fail to process the food properly. The engineered beings have a special diet, created for their dietary needs. The mixture includes several organ foods blended with plasmatic fluids, amniotic liquids and parasitiplasm materials. These unique 'animals' also enjoy occasional green plants, usually grasses or lettuce. The creatures that are designed to become warriors, eat protein filled liquids.

Q -- In the Dulce Papers, copper seems to be high on the importance list. In what methods is copper used?

A -- One of the main uses of copper at Dulce is containment of the magnetic flow, magnets are used everywhere at that base. The infamous vats' interiors are lined with copper, and the exterior walls are clad with stainless steel. The mechanical arm that stirs the liquid is made of a copper alloy. Other uses include dietary needs in a few of the transbiotic beings. There are several specially made cells or rooms built first with lead, then magnetic steel then clad in copper. It is in those cells on the Fourth Level that contain living aural essence. This essence is what you would call [a captured disembodied] 'soul' or... "astral body".

(Note: This may tie-in with the reports of certain remote-viewing "astral spies" who claim to have "projected" into underground facilities like Dulce New Mexico or Pine Gap Australia, only to have close encounters with these astral containment fields, or have been captured by the same and released after being 'interrogated' via super-sensitive electronic equipment. In one case an Australian remote-viewer was probing the Pine Gap facility where he also "saw" three other astral spies.

The magnetic or astral body of one of these people had been captured by such a containment field, which really disturbed him. This man, Robert, also saw Greys and Reptiloids operating in the deeper levels of Pine Gap and also Nordic-type humans who were apparently captives and who did NOT seem to be very happy about being there.)

Q -- Growing multi-species beings, blood formulas and human parts in vats sounds like a bad plot to a science fiction movie. The doctors and scientists of the world claim you can't mix the species. The concepts mentioned in the

Dulce Papers sounds far-fetched. Could you provide information that the average "surface world" reader could understand about similar things?

A -- The doctors and scientists on the SURFACE world may say that, but underground, away from the prying eyes of ethics boards, they DO GROW TRANS-GENUS BEINGS! There is a lot of written material available at libraries. One of the best sources is an easy to read book published back in 1969, by Prentice-Hall International, with the title of "THE SECOND GENESIS, THE COMING CONTROL OF LIFE" by Albert Rosenfelt.

In this book, they discuss "animals that may be especially bred to supply genetically reliable organs for people." And the use of fetal or embryonic material from which adult sized organs and tissues may be grown." Also he discusses the fact that embryonic tissue has no immunological activity, therefore it cannot provoke the defense mechanism in the recipient.

IT WILL JOIN THE BODY NOT AS A FOREIGN ANTIGEN, BUT AS A NATURAL PROTEIN. He further discusses solitary generation, commonly called virgin birth, but also known as parthenogenesis. With one "virgin birth" in 1.6 million births average ON THE SURFACE of the world, in Dulce that rate is reversed.

Occasionally, a "normally born" human infant is born in the hospital wards on the Seventh Level. Parthenogenesis is the method used to grow type two beings. The now common transsexual surgery on the surface world, began at the Dulce Base.

Men became women on a whim in the Seventh Level labs, and with the Fourth Level technology, the brain washing [resulted in] the "eager desire to become a woman" and that poor man [whether a willing or unwilling participant] FIRMLY BELIEVES he always wanted to be a woman.

No one could convince him to believe the truth. ALL THINGS ARE TWISTED AT DULCE. A quote by Dr. Ralph W. Gerard [in THE SECOND GENESIS] put in his now classic statement: "There can be no twisted thought without a twisted molecule". MOST have originated at Dulce.

Q -- How are the human workers stopped from telling everything about Dulce?

A -- Implants, fear threats to harm the families, EM control, also reprogramming with ELF [Extremely Low Frequency] and drugs are the most common methods to 'encourage' the workers not to divulge the location or daily routine.

Q -- A construction worker at "The Ant Hill" [The Northrup's Tehachapi Base] reports seeing 10-12 foot tall human looking beings in lab coats. Who are these guys, are they from the hollow earth?

(Note: The Hollow Earth theory is one that was postulated by various well known individuals, including Marshall B. Gardner, Raymond Bernard, William Halley - discoverer of Halley's comet, Edgar Allen Poe, Edgar Rice Burroughs, John Cleves Symmes, John Uri Lloyd and others.

Basically the thesis involves what one might refer to as the Geoconcavitic sphere theory, or that as the earth was forming in its molten state the planetary spin created a hollow or concavity within the center similar to the hollow created by the centrifugal force of a horizontal washing machine following a spin cycle.

The theory, which has been postulated in para-geological theories, in adventure novels, and in some cases even in alleged visits to the "inner world", states that the 'shell' of the earth averages between 800-1000 miles thick, with an interior surface consisting of oceans and land illuminated perpetually by a sphere of electromagnetic and/or nuclear energy suspended at the very center of the "empty space".

There are reputedly funnel-like openings near the polar regions, perpetually concealed by mist created by the collision of cold air from the outside and hot air from the inside, which permits ingress and egress to and from this inner 'world'. The theory states that the inner surface has its own gravity, yet slightly less than the outer surface gravity. One side-theory is that between the inner and outer surface where gravity is nullified there exists a layer of weightless or low-weight caverns in an eternal state of chaos where minerals, liquids, gases and chemicals continually slam together from the earth's rotation, causing intense magmatic activity, a virtual inferno, or "bottomless pit".

Some have theorized that -- based on the Apocryphal book of Esdras, chapter 13, which contains non-canonized Jewish legends -- that the 10 'lost' tribes of Israel disappeared beyond the river Sambatyon and to a place in the far north where humans never lived before called 'Arzareth'.

In the last days, a path would be made through the ice and waters of the north and the lost tribes would return. There are three tribes accounted for as of this writing, or rather two tribes and two half tribes: Judah, Benjamin, half of the Levite tribe, and apparently half of the tribe of Dan if we are to believe the Ethiopian 'Jews' who claim to be descended from Dan. The '13th' tribe would be accounted for by the fact that the two Josephite tribes of

Ephraim and Manasseh are considered distinctive tribes in and of themselves.

As for the 'giants', some believe that these have a direct connection to the 10-12 foot tall 'Anakim' people mentioned in the Old Testament who were driven out of Palestine, following which the Torah gives no further details as to their fate, although there have been many reports of such 'giants' being encountered in large cavern systems below Alaska, Oregon, California, Utah, Texas and Mexico, and also reports of ancient gravesites in the western U.S. and elsewhere where the remains of human giants have reportedly been discovered. Most often they -- like the fifth dimensional "Sasquatch people" themselves -- have been described as being benevolent, unless provoked.)

A. They are probably inner earth drones [workers]. The deeper you get, the stranger the life forms. The tall men are from the subterranean levels, lower yet are the dwarfed deformed forms. I don't trust either of them. There are other forms that both the tall men and the dwarfed men fear and loathe, they are similar to Bigfoot in appearance, but extremely violent and enjoy eating whatever they find while it is still alive!

They are subhuman and demented, with an IQ around 15 (Note: Apparently, according to another source, these lower 'Bigfoot' type creatures -- having more of a resemblance to apes than to the more "human-like" faces and features of the much friendlier Sasquatch people who frequent the surface -- dwell in wild cavern systems some 6 or more miles deep, along with other very large and dangerous insectoid and quadruped or serpentine reptilian life forms reminiscent to something from out of a hadean nightmare.

This is according to a report I investigated some years ago of a group of speleonauts who reportedly broke into a vast underground labyrinth west and northwest of Cushman, Arkansas, where they encountered these types of creatures as well as friendly blue-skinned humans who claimed to be descended from a family that had survived an ancient global deluge by taking refuge within a large ship.

These ancient people claimed that their ancestors had come to the Americas and discovered the cavern 'world', wherein they commenced to establish their hidden civilization.) The reptiloid [hominoid as opposed to quadruped or serpentine] life forms stay in caves or caverns that aren't very deep. They prefer the desert mountains.

They use camouflage rather than fighting, but they do carry vril rods for protection [flash guns]. They do have a symbol, not the hokey "snake-with-wings" that I keep seeing in the public (which is used mostly by the GREYS

and also as a medical symbol for the Delta Force). The REPTOIDS use a dragon with its tail in its mouth [a circle] with seven pointed stars in the middle.

Q -- There have been reports of the Delta Force having black vans with no tires that hover over the ground. How much are we [U.S.A.] already inter-working with alien cultures?

A -- I haven't seen the black vans you mentioned. We are totally submerged with alien cultures. Very little of the original human cultures have survived.

Q -- How can WE [the public] go after, or expose an alien culture which is covert and hidden?

A -- Go for the best shot. That means go after the REPTOID. They stay near the surface, they choose to try to hide and avoid contact. They are soldiers, doing a job and usually there are two or three at each job site.

They are 'manning' a remote post. They are not to bother the humans unless they are endangering the post. Most of them are not hostile and won't kidnap you, they may blast you with a flash gun that may paralyze you [you won't remember the flash] for an hour or two and cause confusion and mild fear. It could cause you to black out [pass out] for a while.

It is their way to escape and buy time to hide any visible equipment. If you know any areas with repeated reptilian sightings, then that is the place for you to look.

They are fearsome to meet face to face, and their voices are harsh and whispery with heavy ss's, but most of them understand English [and several other languages]. Wear something with a reptile [not something violent, like St. George killing the Dragon!] in sight.

If you see one, keep your hands OPEN, palm forward, arms DOWN. That is the non-aggression approach. DON'T raise your arms, unless told to. DON'T carry anything in your hands or arms.

If he doesn't run, walk SLOWLY towards him. Let him speak first. They consider humans repulsive and hostile and threatening [with good reason!]. DON'T try to offer him anything, DON'T touch him or anything of his. If he hisses at you, back up a couple feet, but DON'T LOOK AWAY!

It simply means he finds you smelly. DON'T try to overpower him, he is stronger than ten or twelve men! Usually, if he hasn't run so far, he is

curious and wants to talk to you. FIGHT YOUR FEAR and your thoughts of panic.

Q -- How do we get closer to some kind of data to prove to others that there really is a danger from non-human beings?

A -- Good question. I'm afraid we will find the proof the hard way, when we are invaded. Try to keep a small camera with you at all times. When you search for reptoids, keep it in your pocket.

Q -- Is there a specific location where the public can set up their cameras and equipment to DOCUMENT an alien-government base, and/or their activities?

A -- The problem is, most of the meetings are held in military bases or underground. The Groom Lake Facility does fly several alien craft that regularly fly over unpopulated land that go back and forth from several bases, Southern California has several notable areas. Twenty Nine Palms -- Lancaster or Chocolate Mountains are well known for such activities.

Q -- Could you provide us with a copy of your badge or card you used at Dulce?

A -- Badges or cards never leave the bases. All exits have bars or walls of metal... to open, to go out requires using the card. When you use it for an exit slot, the card won't come out.

Each time you leave the base, you are issued a new card, with all the usual data about you, plus your weight added, corrected daily. There are several mines in the Chocolate Mts. that open into a base highway, but be aware that they are patrolled regularly and there are cameras there.

Q -- There are so many types of really far out 'Aliens' seen in TV, movies, magazines and popular fiction, is there one type of a fictional unknown race, in your opinion, that fits the term 'Alien'?

A -- Yes! There are two, an alien that is totally indescribable, and another would be a pseudo-alien.

Q -- What are the dimensions of the Dulce Facility?

A -- There are 1,700 paved miles of roads under Dulce and Northern New Mexico, towards Los Alamos is another 800 miles of tunnels. The base is STILL GROWING [due west].

Q -- What is the top depth?

A -- The first level starts 200 feet from the surface. Each level has a ceiling of seven feet, except levels six and seven, the ceiling there is 45 and 60 feet. There are approximately 45 feet or more between each level. The average highway ceiling is twenty five feet. The HUB at the base is 3,000 feet wide. Use a 7.5 minute scale map to try to comprehend the size of the place.

Q -- Are there "regular vehicle" exits that can be observed from the ground?

A -- Yes, but they are inside Los Alamos.

Q -- Are their aerial exits that can be observed?

A -- Twenty miles due north of Dulce (across the border into southern Colorado) is a large hanger, it is hidden by a facade of cliffs. Look for an isolated short road on the top of a mesa, with no road to or from the top.

Q -- Are the ventilation shafts visible?

A -- The ventilation shafts are hidden by bushes or vents inside caves. There are five on the top of the mesa, be aware there are cameras inside most of the vents.

Q -- Is there external security, and could we recognize them in or around the town itself?

A -- There is minimal security on the surface, most of the men [and women] are Air Force or "highway crew" men. There used to be a Best Western motel that hosts or hires a lot of Base workers from Level One. I don't know if that motel is still operational. Most of the security force live in Santa Fe. Others live at White Pine [Los Alamos].

Q -- Are there security sensors? What type? If so, what is their power source?

A -- Yes there are many types of sensors, radar, infrared, heat sensors, microwave, EMGW, and satellite. Most of the sensors are powered by magnetic power. The only thing you may notice on the surface, would be an occasional satellite dish.

Q -- If you can, give us some information on the upcoming war with the aliens. When does it start? Do you recommend going underground?

A -- The war has already begun. To start, they use "weather control" devices that can cripple a city in hours. Storms, flood and drought -- with those few things they can bring any country to their knees in a hurry.

Yes, I do recommend going underground. Choose a location that has a higher elevation than the surrounding terrain. Pick out a cave or even an abandoned mining shaft or two, bury a cache of supplies [including food and water!] near these locations.

Place the supplies in heavy plastic boxes that have tight lids [to prevent the destruction by earth burrowing rodents and insects]. Then plan to live like a squatter when it becomes necessary. If you own land, create a system of tunnels and tell no one. Use your tunnels to secrete your supplies, and plan to live in those corridors when you must.

Q -- What about the reptilian ships that are in orbit around the equator (presumably including the original two 'planetoids' that arrived in geosynchronous orbits around earth at 400 and 600 miles up in 1953. This reportedly led to an NSA project which successfully communicated with the Grey aliens and resulted in a contact-landing-treaty scenario involving president Eisenhower and other Executive-Military-Industrial officials at Muroc/Edwards/Holloman Air Force Bases in 1954), are they cloaked?

A -- They are not cloaked the way you may think. It's more like nobody is learning to SEE, even though it is in plain sight. Like the mail man becomes invisible because you are so used to seeing him you never noticed he is alive.

One of the favorite methods of covert activities is to 'hide' their operation in such an OBVIOUS way [or place] that no one would suspect it is covert (for instance, hiding entrances to underground bases beneath religious shrines, federal buildings, mining works, malls, libraries, lodges, hotels or basically areas that one would consider the least likely places to hide or accommodate an entrance to an underground facility.

The underground New World Order 'FEMA' facilities throughout the United States apparently utilize this type of concealment with many of their bases.)

Q -- What are the Greys susceptible to?

A -- The greys are photosensitive, any bright light hurts their eyes. They avoid sunlight, and travel at night. Camera flashes causes them to back up. It could be used as a weapon against them, but they recover quickly. It could buy enough time to escape.

Use commands, or nonsensical words in the form of commands and they will back up. Their brain is more logical than ours and they do not create 'fun'. They do not understand poetry either. What really confuses them is saying things in "pig-latin". We learned that in a hurry, and used it against them [the GREYS] in the Dulce Wars.

Q -- Can greys read your intentions if you came up behind one?

A -- Yes. They read your INTENT, because they use your body's frequency. The human race broadcasts a frequency that they recognize as an electromagnetic impulse. Each person has a slightly different frequency, that difference is what we call 'personality'. When a human thinks, they broadcast strong impulses, in the case of 'fear' the frequency is 'loud' and easy to recognize (by the same right, a calm and composed mind-set should be far more difficult to 'recognize').

Q -- Can we shield ourselves against their mental control?

A -- We CAN shield ourselves against them, however 95% of the human race never try to control their thoughts, and controlling our own thoughts is the best weapon. The average person rarely thinks in a clear pattern. That allows the brain to think in a chaotic way. Control your thoughts, AND YOU CAN STOP THE ALIENS ATTEMPTING TO ABDUCT AND CONTROL YOU. Controlling my own thoughts have kept me alive for years.

Q -- Could you shed some light on the type of human the aliens are looking for when they abduct?

A -- I can tell you that the most common are petite women in their early twenties or early thirties, dark haired boys between five to nine, small to medium size men in their mid-twenties to mid-forties.

But, let me stress that there are ALL TYPES of people being held against their will in the Dulce Base! There are tall heavy men and women, teenagers, elderly folks and very young girls in the cages AND the vats.

I only mention the most common age-size are the small young men and petite women. The boys are favored because at that age their bodies are rapidly growing, and their atomic material is adaptable in the transfer chamber. The young small women are frequently very fertile. The men are used for sperm. I have no idea why they prefer small to average size men.

Q -- Did you ever see twins or triplets, etc.?

A -- Since you mentioned it, no. It never crossed my mind to search for them. But then that doesn't mean they aren't there. There is no way I could have seen everybody at that huge complex.

Q -- What is the prevalent human race at the Dulce Base? I am curious about both the human workers, and the inmates.

A -- The human work force is made of people from every nation on the surface world. The one thing they share is that they all speak English. If you are asking if there are white, black, red, yellow and brown skin color, again I'll have to say that there is no 'prevalent' race there.

As for inmates, I could see ALL races there. From what I could see, it looked like there were more 'white' people, but again, I saw a constant flow of different people, many I think, were only there for a few hours.

Q -- Please explain the method they use to identify each inmate.

A -- No one has a name. When first brought to this facility, they were issued one large 'number'. Usually that code has a mixture of numbers and letters. They show the place, how, and by who, followed by the time, age, sex and finally the personal number [their S.S. number]. For example it might look like this: NVLV-00A-00700-P00:00:00-00-M-000-00-000

Q -- With that huge facility, trash and garbage must be a real problem, how do they dispose it?

A -- It was never a problem. Some of it is 'reformed' or melted down then remade. Some of the wet garbage is 'eaten' by bacterial forms, and what's left is vaporized in a vat like chamber. The residue of that action [it takes them months to get enough to measure] is used in a complex lye and used to fertilize crops.

Q -- Where is your family? Not just your wife and son, but parents and siblings?

A -- Cathy and Eric are still missing. My parents died in a car crash when I was in my teens. I have one brother, if he is alive I suspect he is inside an underground base somewhere. I haven't heard from him for several years. Please pray for them, please!

Q -- What is your birth date, and where were you born?

A -- 23 April 1941, Glen Ellyn, IL [actually in a farm at home, in the place now called Glen Ellyn, my birth certificate list is at Wheaton, IL]

Q -- You have been through so much, and yet keep fighting, what is your biggest fear?

A -- That the general public will forget THE TRAPPED INNOCENT PEOPLE in the despicable place, and will ignore THE HUNDREDS OF CHILDREN, WOMEN AND MEN ADDED TO THAT PLACE EVERY MONTH.

Witness Report #3 John Anderson

Recently, researcher John Anderson went to Dulce, N.M., to see if there was any truth to the reported UFO activity. He says as he arrived in town he saw a caravan of cars and a McDonnell-Douglas mini-lab in a van going up a rural road near the town.

He followed them to a fenced-in compound where he waited to see further developments. Suddenly, six UFOs descended rapidly over the compound, hovered long enough for him to snap a picture, then shot up and out of sight.

When later stopping at a store, he told the owner about the UFO photo he had taken, the store owner listened and revealed how he had been a victim rancher of cattle mutes.

Their conversation was interrupted by a phone call. The store owner told John to leave at once, then after John went to his car, he saw a mysterious van drive up to the store and a man got out and went inside. John, deciding to leave Dulce, was followed by two men in a car as he left town.

Even more recently a research team has gone up to Archuleta Mesa to take soundings under the ground. Preliminary and tentative computer analysis of these soundings seem to indicate deep cavities under the mesa.

How long will the secret of Dulce, known to insiders as Section D, remain locked up inside the mute New Mexico Mountains? Forever?

Witness Report #4 A Private

Another story comes from a private stationed on the surface at Dulce. He soon realized something mighty 'odd' was going on around there, but it took a while to put his finger on it.

'One morning last September, I was working on a routine job when another of the young enlistees, a mechanic, came in with a small rush job he wanted welded at once.

He had the print and proceeded to show me exactly what he wanted. We are both bending over the bench in front of the welder when I happened to look directly into his face.

It seemed to suddenly become covered with a semi-transparent film or cloud. His features faded and in their place appeared a 'thing' with bulging eyes, no hair and SCALES for skin. I stood and looked at it for about 20 seconds.

WHATEVER IT WAS stood and looked at me without moving. Then the strange face seemed to fade away, and at the same time recede into the ordinary face of the young man underneath. The dissipation of the imposed face lasted or took about five seconds before it was completely gone and I was standing there weak, my mouth open and staring at the young man who had come in with the rush order.

The young 'man' did not seem to be conscious of the elapsed time when I had observed all this but went right on talking about the job as if nothing had happened.

"This is hard to take but I assure you it was still harder for me. No one can realize a jolt you could get from seeing anything like this until they have experienced it for themselves.

It was several days before I had myself convinced that maybe after all what I had seen was real and that I was not suffering from illusions and the beginning of insanity. Days passed before I saw this particular phenomena again.

The next time was later at night at the guard house near the front gate, on the way to work. I had purchased some small items and on arriving I went around to the guard house with my slip to retrieve my package.

There was only one guard on duty. I handed him the check and he began to look at the package, taking his time. I waited a minute, then happened to look directly at him again. His face began to change.

Again a face of a strange creature was imposed. You could see through the imposed face for a few seconds and then it became the only one visible [solidified is the word] and again about 20 seconds duration. Again five seconds for dissipation and the guard started to move normally again, found my package and gravely handed it to me and I walked out without a word being said."



Witness Report #5 Jicarilla a tribal police officer

In May 2010 received through the MUFON CMS, He recalled an alien encounter he had in Dulce, New Mexico:

Mid 80's Dulce, NM: Myself a law enforcement officer w/Jicarilla Apache Police. Background Police Science/Forensic Western NM Univ., Silver City.

Had gone to graveyard shift at midnight w/ another officer and dispatcher. Immediately went to a single female's home with the other shift and was informed that a small being was in her house at the foot of the bed with a box shining a laser like red light at her, the other officers knowing it was there shift change left without further investigation. Making fun mind you.

She was obviously shaken up and I did notice some electrical malfunctions within her home and her animals, dogs and horses were uneasy. Throughout the night I continued to check on her, once in the early morning I was called

to her home, her house was dark and as I entered I could hear her down the hall crying for help.

I was informed again of visitors with a light in her home and it seemed strangely quiet. No one to be found in the home or area. In the early morning when the sun comes up when there is light I drove up to the home to make a check I noticed some movement in the brush and trees just west of her home about 15 yards away.

I still don't understand what I may have saw, but soon after as I was stepping out of my unit three oval craft in a triangular pattern about the size of a three bedroom home lifted off from behind some juniper trees just 30 yards at the most taking off silently without noise/down drafts, then turn a bright white light and slowly went in the direction east towards Chama, NM slowly gain altitude.

My other Officer and Dispatcher was witness to this also. Shortly after I heard on the State Police Frequency from Chama about those UFOs that were being called in to them.

I felt completely helpless as an Officer to help someone who asked for help and was unable to assist and protect her in her time of need. It still bothers me today. S/GJ. (I spoke with Norio in Dulce, NM during the Dulce Base Conference also.)

Witness Report #6 Message from a Dulce Intern

Received March 2011 at a website

I read the letter you posted recently about the Dulce Labs genetics experiments and wanted to share my experiences with your readers. When I was an undergraduate studying genetics in the mid-1970s, I did a 10-month internship at Dulce Labs.

My primary duties were on level 1. That is where I spent almost all of my time. But once a week I accompanied one of the junior researchers to levels 5, 6, and 7 to collect data tapes and other documentation. I never got past the "clear zone" on those levels, but on a couple occasions I heard inhuman shrieks and wailing noises on level 6.

I was told that level 6 was a psychiatric facility for especially disturbed patients, and that they were known to have emotional outbursts.

On one occasion while we were waiting for someone to bring out the tapes, I heard part of a message come through the intercom, and the words are burned into my memory.

VOICE 1: "CELL 34 COMPROMISED, ENTITY HAS BREACHED CONTAINMENT"

After a pause a second voice came over the speaker:

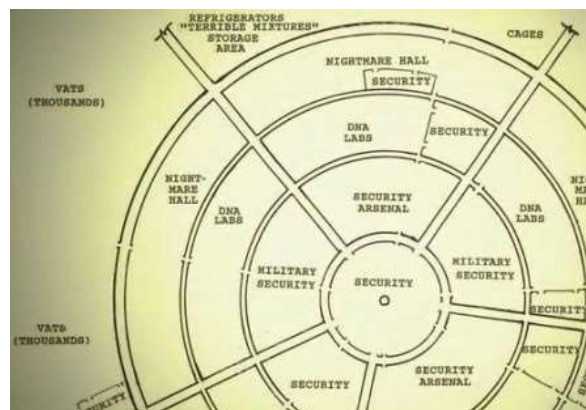
VOICE 2: "AVAILABLE PERSONAL REPORT TO THE BLUE ZONE FOR C&C. MAXIMUM FORCE AUTHORIZED."

The guard at the desk told me and my colleague that we had to leave immediately, we were rushed back into the elevator before the materials were delivered to us.

It was two days before they let us go pick up the tapes, and when we went that time, everything was normal. Nobody ever talked about it. I tried to ask my colleague, the junior researcher who was there at the time, about it, but he said he didn't know what I was talking about, and something in his tone told me I'd better forget about it too.

After I graduated I was interested in returning to Dulce because I was really excited about the potential for genetic science, and Dulce had some very advanced equipment and knowledge - better than anything being used anywhere else.

But I was told that there weren't any openings. I wondered if I was being blown off because of my curiosity about that event, if I was considered a risk. I tried contacting the junior researcher, but never got a response from him. – MP



HOW TO GET TO THE DULCE BASE OF NEW MEXICO

(at least to the entrance of a suspicious ranch adjacent to the north slope of Mount Archuleta on the Colorado side):

- From Dulce, New Mexico, go east on Hwy 64 to the town of Lumberton.
- From Lumberton, take the County Rd. 357 north.
- Enter Colorado state line.
- Keep going on County Rd. 357.
- Go west on County Rd. 359 (Coyote Park Rd.)
- Go west on County Rd. 542 (Montezuma Rd.)
- Drive for about 8 miles.
- Look for the Redding Ranch gate on the left side.
- The Redding Ranch gate is located on County Rd. 542 and the Great Spirit Rd.
- Look south.
- You will see the "guard towers".
- Mount Archuleta is to the south of this area.
- If you want to enter the Redding Ranch, do it at your own risk.
- The premises may or may not be guarded.
- This entire area is owned by the Utes tribe.
- If you are still alive, keep going south all the way on the Great Spirit Rd. towards the New Mexico side.
- You will begin to climb the north slope of Mount Archuleta.
- If you are still alive, with much luck, you may be able to find a hidden entrance somewhere there.....
- But then again, there may be nothing there.

**THE
END**



But there's more Blue Planet Project books available at:

www.blue-planet-project.com

Books by Gil Carlson and available direct from the publisher:



The Blue Planet Project Book is the mysterious manuscript authored by a U.S. Government insider. It describes, in amazing detail, the inter relationship between the U.S. Government and several extraterrestrials societies with whom we have working agreements.

I've been told this information was once classified as "Above Top Secret" and that this information was never intended to be released to the public!

The Blue Planet Project Book contains all the amazing notes and drawings supposedly made by the scientist. The scientist visited various UFO crash sites, and the notes and drawings were allegedly made from those visits.

It is believed that this anonymous scientist was contracted by the government over several years to visit all crash sites, interrogate captured Alien Life Forms and analyze all data gathered from that endeavor.

www.blue-planet-project.com



Now it has recently been revealed that not all of the Blue Planet Project info was revealed at that time. What has surfaced now is almost enough material to be called the second half of The Blue Planet Project Book!

The Main Chapters are:

- Alien Pharmacology for Humans
- Alien Psychic Ability
- Alien Craft Engines
- Alien Servants for the Greys
- MK-Ultra Project
- Nordic Physiology
- Alien Language
- Vegan Language
- The Revised Periodic Table
- The Governments philosophy on Aliens
- A Roswell Crash Update
- National Security Agency (NSA) Security Codes

<http://www.blue-planet-project.com/Blue-Planet-Project-Lost-Chapters.html>



Transcript of classified tape recording made at Camp David, Maryland during a presidential briefing regarding the subject of UNIDENTIFIED FLYING OBJECTS and EXTRATERRESTRIAL VISITATION of EARTH. President RONALD REAGAN was present. Now with the President Regan Briefing on Roswell, I believe there is no way that the government can deny what actually happened at Roswell!

<http://www.blue-planet-project.com/Reagan-Roswell-UFO.html>



The newest, most accurate book on discovering what's going on with extraterrestrials on our planet as well as their home planets. Remote viewing has proven to be an extremely accurate and revealing "spying" medium.

And now we are revealing the information that has been obtained by a number of different Remote Viewers who have viewed aliens.

These results have been amazing! Getting any kind of information on aliens by using any other methods over the years has been very limited, confusing and possibly inaccurate.

That's why remote viewing aliens is such a very exciting method for finally getting questions answered!

<http://www.blue-planet-project.com/Remote-Viewing-Aliens-Book.html>