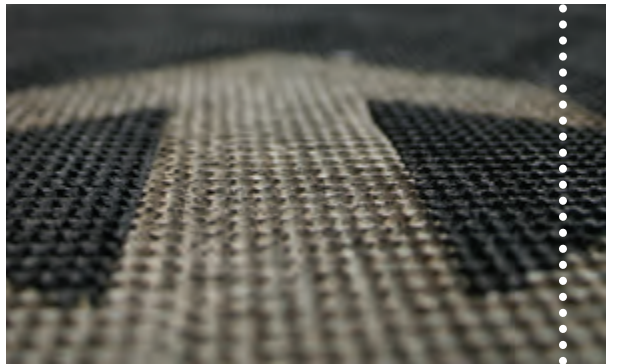
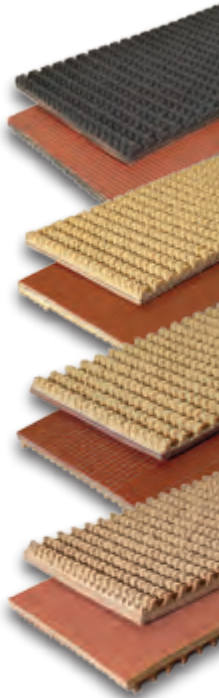


PACKAGE HANDLING BELTING

**incline belting
for every application**

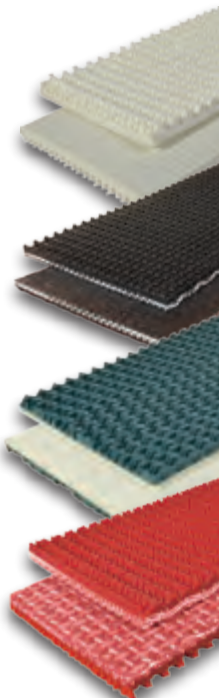


RUBBER ROUGH TOP PROFILES



| Part # | Description | # of Plies | Nominal OAG | Comp. | Min. Pulley | PIW |
|--------|------------------------|------------|-------------|----------------|-------------|-----|
| 3-1102 | Black Rubber Rough Top | 2 | 0.250" | SBR | 2" | 150 |
| 3-1402 | Tan Rough Top x Bare | 2 | 0.260" | SBR | 2" | 150 |
| 3-1406 | Tan Rough Top x Bare | 3 | 0.265" | SBR | 3" | 200 |
| 3-1407 | Gum Rough Top x Bare | 4 | 0.350" | Natural Rubber | 4" | 200 |

PVC ROUGH TOP PROFILES



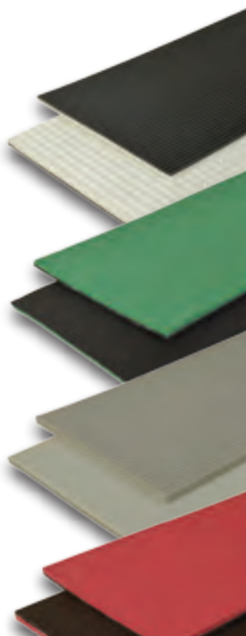
| Part # | Description | # of Plies | Nominal OAG | Comp. | Min. Pulley | PIW |
|--------|----------------------------|------------|-------------|-------|-------------|-----|
| 2-2125 | W1000 PVC Rough Top HI | 1 | 0.310" | PVC | 3" | 100 |
| 3-1512 | B1200 PVC Rough Top | 1 | 0.230" | PVC | 3" | 120 |
| 3-1514 | PVC Rough Top Dark Green | 2 | 0.220" | PVC | 2.4" | 51 |
| 3-1517 | R1700 Red PVC Rough Top HI | 1 | 0.340" | PVC | 4" | 170 |

DIAMOND TOP PROFILES



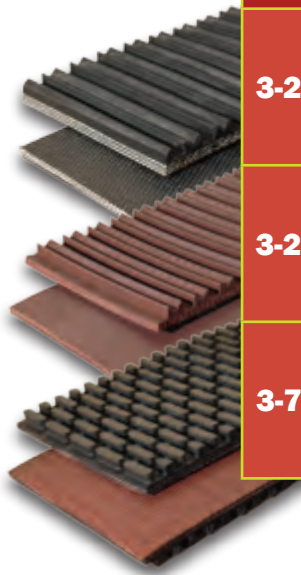
| Part # | Description | # of Plies | Nominal OAG | Comp. | Min. Pulley | PIW |
|---------|---------------------|------------|-------------|------------|-------------|-----|
| 3-4102 | Black Diamond Top | 2 | 0.330" | Soft SBR | 2.5" | 120 |
| 3-4402 | Tan Diamond Top | 2 | 0.313" | Rubber | 2.5" | 150 |
| 3-4402G | Tan Gum Diamond Top | 2 | 0.313" | Gum Rubber | 2.5" | 150 |
| 3-4403 | Tan Gum Diamond Top | 3 | 0.365" | Rubber | 3" | 225 |

LONGITUDINAL GROOVE PROFILES



| Part # | Description | # of Plies | Nominal OAG | Comp. | Min. Pulley | PIW |
|--------|-----------------------------------|------------|-------------|----------------|-------------|-----|
| 3-1560 | Black Longitudinal Groove | 2 | 0.090" | PVC | 1.2" | 86 |
| 3-1550 | EPDM Mono-tote | 2 | 0.115" | EPDM | 2" | 70 |
| 3-1630 | Gray Longitudinal Groove | 2 | 0.110" | PVC | 1.5" | 100 |
| 4-1501 | Red Supergrip Longitudinal Groove | 2 | 0.125" | Natural Rubber | 1.5" | 105 |

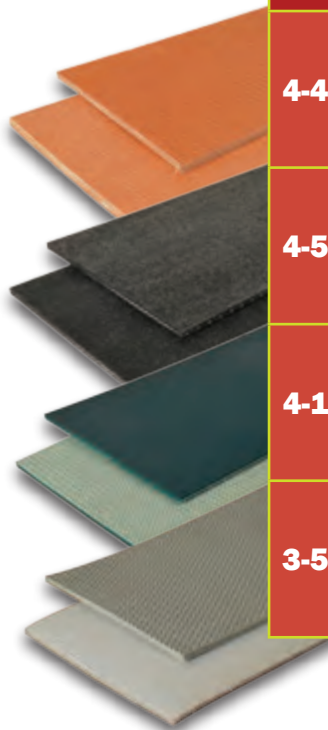
OTHER PROFILES



| Part # | Description | # of Plies | Nominal OAG | Comp. | Min. Pulley | PIW |
|--------|----------------|------------|-------------|-------|-------------|-----|
| 3-2103 | Black V-Top | 3 | 0.322" | SBR | 2.5" | 90 |
| 3-2203 | Neoprene V-Top | 3 | 0.320" | NBR | 3" | 150 |
| 3-7102 | Steep Grade | 2 | 0.287" | SBR | 2" | 150 |

OTHER BELTS

GENERAL CONVEYING/DIVERTING/DISTRIBUTION BELTS



| Part # | Description | # of Plies | Nominal OAG | Comp. | Min. Pulley | PIW |
|--------|-----------------------------------|------------|-------------|-------|-------------|-----|
| 4-4004 | Slider Top | 4 | 0.120" | NBR | 2" | 50 |
| 4-5000 | TMIPH529FBS | 1 | 0.120" | PVC | 2" | 100 |
| 4-1012 | PVC x Bare Dark Green Anti-static | 2 | 0.110" | PVC | 2" | 74 |
| 3-5900 | P2GY Mono-Grip-S 5M/SP/ZP | 2 | 0.090" | PVC | 2" | 100 |