



# benazzato

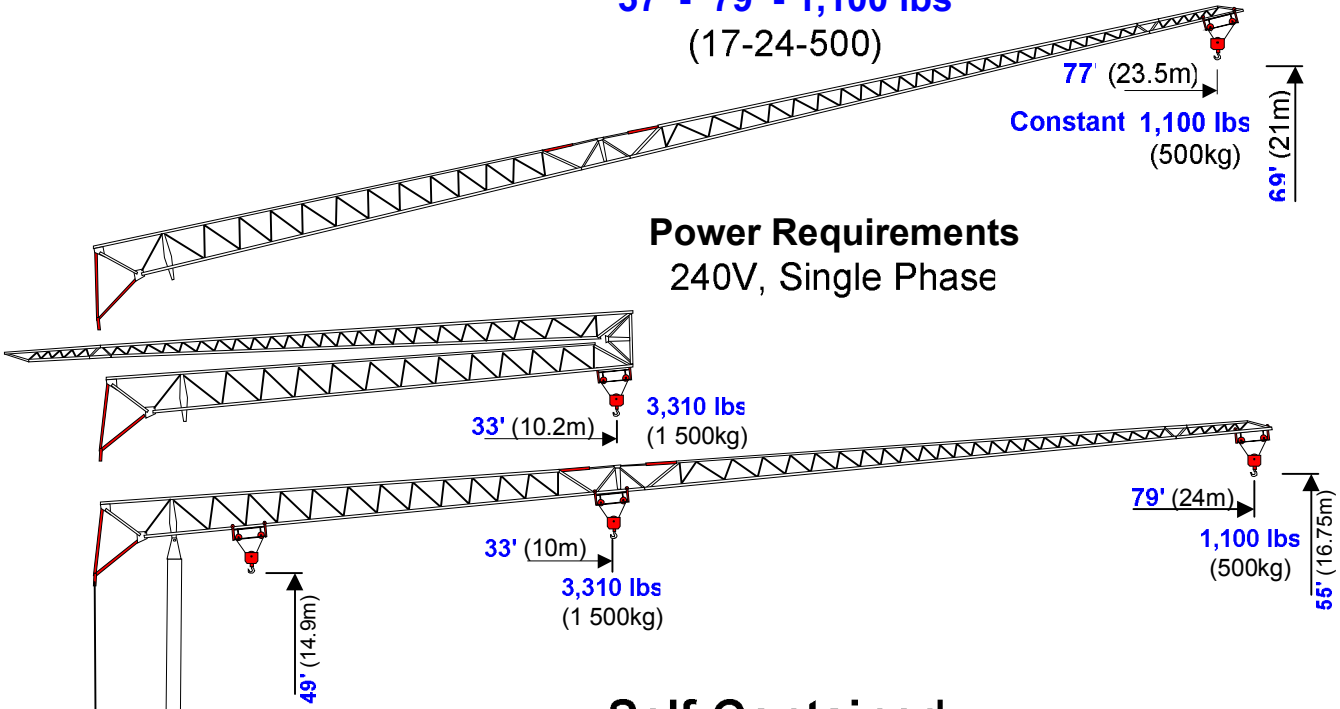
Self-Erecting Crane

## 1179-SC (102)

Self-Contained

57' - 79' - 1,100 lbs

(17-24-500)

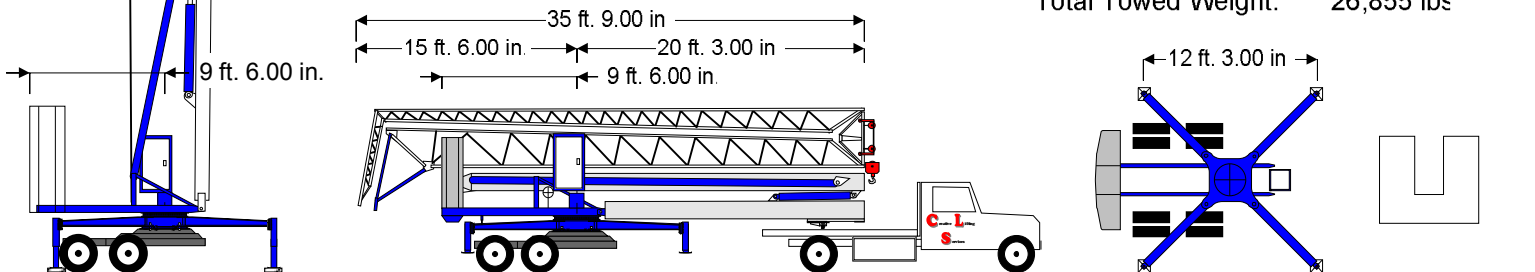


### Power Requirements

240V, Single Phase

### Self-Contained Travels with Full Counterweights

- Axles & Hitch: 3,700 lbs
- Ballast: 11,025 lbs
- Crane Weight: 12,130 lbs
- Total Erected Weight: 26,855 lbs
- Total Towed Weight: 26,855 lbs



Electric, Hydraulic Or Air Brakes. Goose Neck, 5th Wheel Or Pintle Hitch

Hook	ft.	33	36	39	43	46	49	52	59	66	72	79
Radius	meters	10	11	11.9	13.0	14.0	15.0	16.0	18.0	20.0	22.0	24.0
Max	lbs.	3,308	2,922	2,646	2,359	2,150	1,973	1,819	1,577	1,389	1,235	1,103
Capst	tonnes	1.50	1.33	1.20	1.07	0.98	0.90	0.83	0.72	0.63	0.56	0.50