

## Don't Throw It Away!!

# Butler County Electronic Waste (E-Waste) Collection Program



### Who Can Participate in the E-Waste Program?

The Program is FREE to Butler County:

- Households
- Educational Institutions
- Government Agencies

A Small Fee (\$7.00 Maximum) will be charged to:

- Businesses
- Non Profit Groups
- Hospitals

### What is E-Waste?

E-waste is produced when electronic products are no longer functional or become obsolete and need to be discarded.



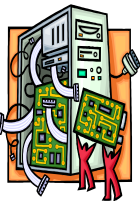
### Why Not Throw Unwanted E-waste in My Household Trash?



- By taking e-waste to a special collection point, materials such as gold, copper, silver, plastic and steel can be recovered and recycled.
- Hazardous materials such as lead and mercury are present in e-waste. It is best to keep those materials out of our landfill.
- By recycling e-waste, we are conserving our natural resources and energy as well as protecting air and water quality.

### What About Personal Data Stored on Electronic Equipment?

Collection centers follow strict guidelines to ensure safe and secure storage and handling to restrict third party access to data stored on electronic devices.



### Where Can I Recycle My E-Waste?

Butler County Landfill



**2963 SW 40th Street (SW 40th and SW Boyer Road)**

**8:30 AM to 5:30 PM, Monday thru Friday**

**8:30 AM to 2:30 PM Saturday**

**The E-Waste Site is located off Kickapoo Road on the east side of the landfill.**

**NOTE: Call First if bringing large quantities of E-Waste!**

**For more information, contact the**

**E-Waste Coordinator**

**316-321-9278**

**[www.bucoks.com](http://www.bucoks.com)**



*The E-Waste Program is funded by Butler County Public Works.*

### Materials Accepted:

Computers, monitors, CPU's, laptops, keyboards, cords, scanners, printers, copy machines, cell phones, pagers, answering machines, PDA's, TV's, microwaves, video games, fax machines, stereos, camcorders, DVD players.