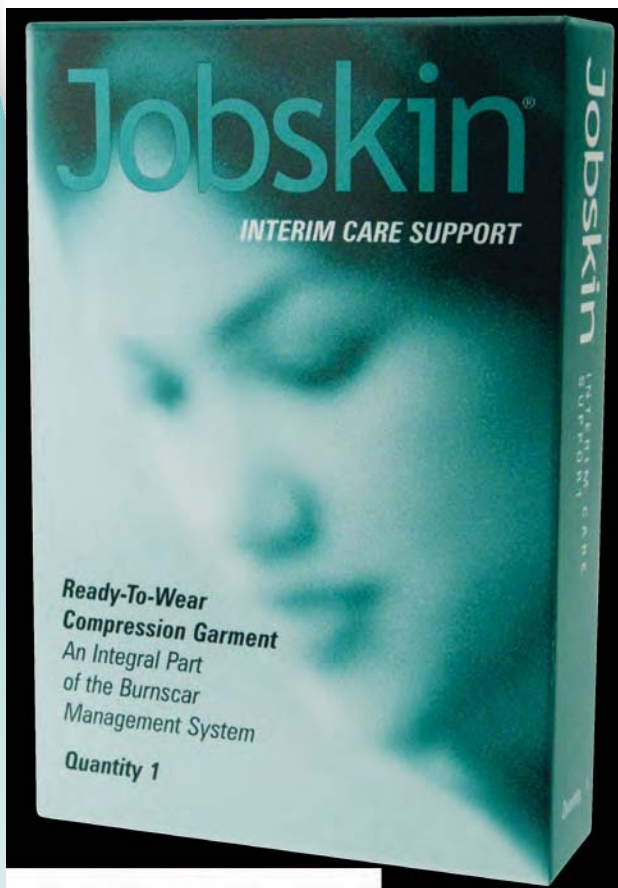


Jobskin™

INTERIM CARE

READY-TO-WEAR COMPRESSION GARMENTS

Designed for the second phase of burn wound healing, Jobskin* Interim Care Garments provide pressure that is compatible with newly healed sensitive skin. Early use of compression improves patient compliance and instills psychological and physical preparedness for Jobskin Custom Burn Garments. Use Jobskin Interim Care Garments as an alternative to elastic stockinette or wraps.



Features & Benefits:

- Eight convenient, Ready-To-Wear styles provide easy and immediate access
- Lightweight, soft fabric that is gentle to sensitive skin
- Easy measuring system, one simple circumferential measurement per style
- Machine washable and easy to dry
- Ideal partner to Jobskin custom garments when lighter fabric required
- Fits toddler to adult regardless of age

READY-TO-WEAR



TORBOT GROUP, INC.
Jobskin Division









5030 Advantage Drive, Suite 101
Toledo, OH 43612-3861
PH 800.207.1074 or 419.724.1478
FX 800.207.1579 or 419.724.1476

© TORBOT GROUP INC.

Jobskin

INTERIM CARE

READY-TO-WEAR COMPRESSION GARMENTS

<p style="text-align: center;">Vest</p>  <p>REF. Chest Circumference</p> <p>59111059 17"-20" – (43-51 cm) 59111060 19"-22" – (48-56 cm) 59111061 21"-25" – (53-64 cm) 59111062 24"-28" – (61-71 cm) 59111063 26"-32" – (68-81 cm) 59111064 30"-36" – (79-91 cm) 59111065 34"-41" – (86-104 cm) 59111066 38"-45" – (96-114 cm)</p>	<p style="text-align: center;">Girdle</p>  <p>REF. Hip Circumference</p> <p>59111067 19"-22" – (48-56 cm) 59111068 21"-24" – (53-61 cm) 59111069 23"-27" – (58-69 cm) 59111070 26"-31" – (66-79 cm) 59111071 29"-35" – (74-89 cm) 59111072 33"-39" – (84-99 cm) 59111073 38"-43" – (96-109 cm) 59111074 41"-50" – (104-127 cm)</p>	<p style="text-align: center;">Knee Length</p>  <p>REF. Ankle Circumference</p> <p>59111075 5.0"-6.0" – (13-15 cm) 59111076 5.5"-7.0" – (14-18 cm) 59111077 6.5"-8.0" – (17-20 cm) 59111078 7.0"-9.0" – (18-23 cm) 59111079 8.0"-10.0" – (20-25 cm)</p>	<p style="text-align: center;">Sleeve</p>  <p>REF. Forearm Circumference</p> <p>59111080 5.0"-6.5" – (13-17 cm) 59111081 6.0"-7.5" – (15-19 cm) 59111082 7.0"-9.0" – (18-23 cm) 59111083 8.5"-10.5" – (22-27 cm) 59111084 10.0"-12.5" – (25-32 cm)</p>
<p style="text-align: center;">Glove</p>  <p>REF. Palm Circumference</p> <p>59111085 4.6"-5.25" – (12-13 cm) 59111086 5.2"-5.87" – (13-15 cm) 59111087 5.8"-6.75" – (15-17 cm) 59111088 6.75"-8.0" – (17-20 cm) 59111089 8.0"-9.87" – (20-25 cm)</p>	<p style="text-align: center;">Face Mask</p>  <p>REF. Head Circumference</p> <p>59111090 18"-21" – (46-53 cm) 59111091 20"-23" – (51-58 cm) 59111092 22"-25" – (56-64 cm)</p>	<p style="text-align: center;">Chin Strap</p>  <p>REF. Head Circumference</p> <p>59111093 18"-21" – (46-53 cm) 59111094 20"-28" – (51-58 cm) 59111095 22"-25" – (56-64 cm)</p>	<p style="text-align: center;">Featureless Mask</p>  <p>REF. Head Circumference</p> <p>59111096 18"-21" – (46-53 cm) 59111097 20"-23" – (51-58 cm) 59111098 22"-25" – (56-64 cm)</p>

Notes: Order glove "OPEN TIP" option by adding "OT" to REF. number

Please refer to the product label and/or package insert for full instructions on safe use of this product

Fiber Content: Nylon 81% _
Spandex 19%

