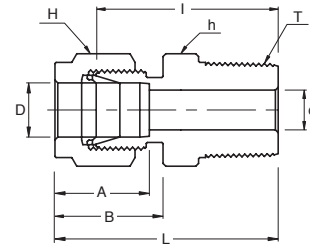


SMC Male Connector

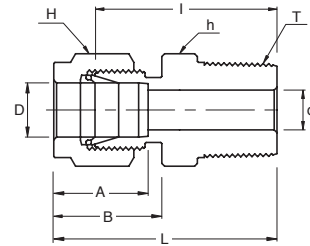
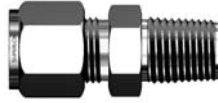


Connects Fractional Tubes To Female NPT Thread

Part No.	Tube O.D. D (inch)	T (NPT)	d Min	Width Across Flat		A	B	I	L
				h (inch)	H (inch)				
SMC 1 - 1N	1/16	1/16	1.27	5/16	5/16	8.63	10.92	20.00	23.83
SMC 1 - 2N	1/16	1/8	1.27	7/16	7/16	8.63	10.92	22.35	26.23
SMC 2 - 2N	1/8	1/8	2.28	7/16	7/16	12.70	15.24	23.87	30.48
SMC 2 - 4N	1/8	1/4	2.28	9/16	7/16	12.70	15.24	28.95	35.56
SMC 2 - 6N	1/8	3/8	2.28	11/16	7/16	12.70	15.24	29.21	35.81
SMC 2 - 8N	1/8	1/2	2.28	7/8	7/16	12.70	15.24	35.56	42.16
SMC 3 - 2N	3/16	1/8	3.04	7/16	1/2	13.71	16.00	24.63	31.24
SMC 3 - 4N	3/16	1/4	3.04	9/16	1/2	13.71	16.00	29.71	36.32
SMC 4 - 2N	1/4	1/8	4.82	1/2	9/16	15.24	17.78	25.40	32.76
SMC 4 - 4N	1/4	1/4	4.82	9/16	9/16	15.24	17.78	30.48	37.84
SMC 4 - 6N	1/4	3/8	4.82	11/16	9/16	15.24	17.78	30.98	38.35
SMC 4 - 8N	1/4	1/2	4.82	7/8	9/16	15.24	17.78	37.33	44.70
SMC 4 - 12N	1/4	3/4	4.82	1-1/16	9/16	15.24	17.78	38.86	46.22
SMC 5 - 2N	5/16	1/8	4.82	9/16	5/8	16.25	18.54	26.67	34.03
SMC 5 - 4N	5/16	1/4	6.35	9/16	5/8	16.25	18.54	31.24	38.60
SMC 5 - 6N	5/16	3/8	6.35	11/16	5/8	16.25	18.54	31.75	39.11
SMC 6 - 2N	3/8	1/8	4.82	5/8	11/16	16.76	19.30	27.94	35.30
SMC 6 - 4N	3/8	1/4	7.11	5/8	11/16	16.76	19.30	32.51	39.87
SMC 6 - 6N	3/8	3/8	7.11	11/16	11/16	16.76	19.30	32.51	39.87
SMC 6 - 8N	3/8	1/2	7.11	7/8	11/16	16.76	19.30	38.86	46.22
SMC 6 - 12N	3/8	3/4	7.11	1-1/16	11/16	16.76	19.30	40.38	47.75
SMC 8 - 2N	1/2	1/8	4.82	13/16	7/8	22.86	21.84	28.70	38.86
SMC 8 - 4N	1/2	1/4	7.11	13/16	7/8	22.86	21.84	33.27	43.43
SMC 8 - 6N	1/2	3/8	9.65	13/16	7/8	22.86	21.84	33.27	43.43
SMC 8 - 8N	1/2	1/2	10.41	7/8	7/8	22.86	21.84	38.86	49.02
SMC 8 - 12N	1/2	3/4	10.41	1-1/16	7/8	22.86	21.84	40.38	50.54
SMC 8 - 16N	1/2	1	10.41	1-3/8	7/8	22.86	21.84	46.99	57.15
SMC 10 - 6N	5/8	3/8	9.65	15/16	1	24.38	21.84	34.03	44.19
SMC 10 - 8N	5/8	1/2	11.93	15/16	1	24.38	21.84	38.86	49.02
SMC 10 - 12N	5/8	3/4	12.70	1-1/16	1	24.38	21.84	40.38	50.54
SMC 12 - 8N	3/4	1/2	11.93	1-1/16	1-1/8	24.38	21.84	40.38	50.54
SMC 12 - 12N	3/4	3/4	15.74	1-1/16	1-1/8	24.38	21.84	40.38	50.54
SMC 12 - 16N	3/4	1	15.74	1-3/8	1-1/8	24.38	21.84	46.99	57.15
SMC 14 - 12N	7/8	3/4	15.74	1-3/16	1-1/4	25.90	21.84	40.38	50.54
SMC 14 - 16N	7/8	1	18.28	1-3/8	1-1/4	25.90	21.84	46.99	57.15
SMC 16 - 8N	1	1/2	11.93	1-3/8	1-1/2	31.24	26.41	45.21	57.40
SMC 16 - 12N	1	3/4	15.74	1-3/8	1-1/2	31.24	26.41	45.21	57.40
SMC 16 - 16N	1	1	22.35	1-3/8	1-1/2	31.24	26.41	50.03	62.23
SMC 20 - 16N	1-1/4	1	22.35	1-3/4	1-7/8	41.15	38.86	55.12	77.22
SMC 20 - 20N	1-1/4	1-1/4	27.69	1-3/4	1-7/8	41.15	38.86	55.12	77.22
SMC 24 - 24N	1-1/2	1-1/2	34.04	2-1/8	2-1/4	50.04	45.21	61.72	88.90
SMC 32 - 32N	2	2	45.97	2-3/4	3	67.56	62.74	76.20	113.54

* All dimensions in millimeters unless specified as "inch". Dimension are for reference only, subject to change

SMC Male Connector



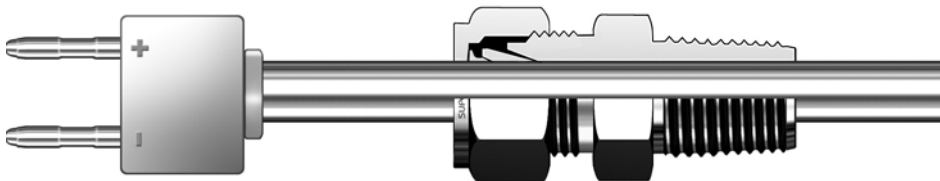
Connects Fractional Tube To Female ISO Tapered Thread

Part No.	Tube O.D. D (inch)	T R (PT)	d Min	Width Across Flat		A	B	I	L
				h (inch)	H (inch)				
SMC 2 - 2R	1/8	1/8	2.28	7/16	7/16	12.70	15.24	23.87	30.48
SMC 2 - 4R	1/8	1/4	2.28	9/16	7/16	12.70	15.24	28.95	35.56
SMC 4 - 2R	1/4	1/8	4.82	1/2	9/16	15.24	17.78	25.40	32.76
SMC 4 - 4R	1/4	1/4	4.82	9/16	9/16	15.24	17.78	30.48	37.84
SMC 4 - 6R	1/4	3/8	4.82	11/16	9/16	15.24	17.78	30.98	38.35
SMC 4 - 8R	1/4	1/2	4.82	7/8	9/16	15.24	17.78	37.33	44.70
SMC 5 - 2R	5/16	1/8	4.82	9/16	5/8	16.25	18.54	26.67	34.03
SMC 5 - 4R	5/16	1/4	6.35	9/16	5/8	16.25	18.54	31.24	38.60
SMC 6 - 2R	3/8	1/8	4.82	5/8	11/16	16.76	19.30	27.94	35.30
SMC 6 - 4R	3/8	1/4	7.11	5/8	11/16	16.76	19.30	32.51	39.87
SMC 6 - 6R	3/8	3/8	7.11	11/16	11/16	16.76	19.30	32.51	39.87
SMC 6 - 8R	3/8	1/2	7.11	7/8	11/16	16.76	19.30	38.86	46.22
SMC 8 - 4R	1/2	1/4	7.11	13/16	7/8	22.86	21.84	33.27	43.43
SMC 8 - 6R	1/2	3/8	9.65	13/16	7/8	22.86	21.84	33.27	43.43
SMC 8 - 8R	1/2	1/2	10.41	7/8	7/8	22.86	21.84	38.86	49.02
SMC 8 - 12R	1/2	3/4	10.41	1-1/16	7/8	22.86	21.84	40.38	50.54
SMC 12 - 12R	3/4	3/4	15.74	1-1/16	1-1/8	24.38	21.84	40.38	50.54
SMC 16 - 16R	1	1	22.35	1-3/8	1-1/2	31.24	26.41	50.03	62.23

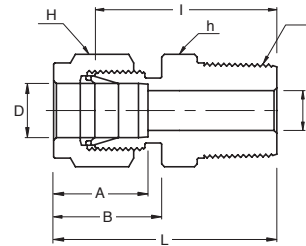
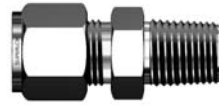
Bored - Through Fittings for Thermocouples

SUPERLOK Bored-Through MALE CONNECTORS accommodate thermocouples or dip tubes
To order, use TM as a suffix to the desired Male Connector ordering number.

Note - The root diameter of the pipe thread end of male connectors makes it impractical to bore through all male connectors.



SMC Male Connector

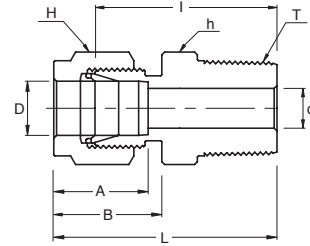
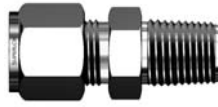


Connects Metric Tube To Female NPT Thread

Part No.	Tube O.D. D	T (NPT)	d Min	Width Across Flat		A	B	I	L
				h	H				
SMC 2M - 2N	2	1/8	1.7	12	12	12.9	15.3	23.9	30.5
SMC 3M - 2N	3	1/8	2.4	12	12	12.9	15.3	23.9	30.5
SMC 3M - 4N	3	1/4	2.4	14	12	12.9	15.3	29.0	35.6
SMC 4M - 2N	4	1/8	2.4	12	12	13.7	16.1	24.6	31.2
SMC 4M - 4N	4	1/4	2.4	14	12	13.7	16.1	29.7	36.3
SMC 6M - 2N	6	1/8	4.8	14	14	15.3	17.7	25.4	32.8
SMC 6M - 4N	6	1/4	4.8	14	14	15.3	17.7	30.5	37.9
SMC 6M - 6N	6	3/8	4.8	18	14	15.3	17.7	31.0	38.4
SMC 6M - 8N	6	1/2	4.8	22	14	15.3	17.7	37.3	44.7
SMC 8M - 2N	8	1/8	4.8	15	16	16.2	18.6	26.7	34.2
SMC 8M - 4N	8	1/4	6.4	15	16	16.2	18.6	31.2	38.7
SMC 8M - 6N	8	3/8	6.4	18	16	16.2	18.6	31.8	39.3
SMC 8M - 8N	8	1/2	6.4	22	16	16.2	18.6	38.1	45.6
SMC 10M - 2N	10	1/8	4.8	18	19	17.2	19.5	28.7	36.3
SMC 10M - 4N	10	1/4	7.9	18	19	17.2	19.5	33.3	40.9
SMC 10M - 6N	10	3/8	7.9	18	19	17.2	19.5	33.3	40.9
SMC 10M - 8N	10	1/2	7.9	22	19	17.2	19.5	38.9	46.5
SMC 12M - 2N	12	1/8	4.8	22	22	22.8	22.0	28.7	38.8
SMC 12M - 4N	12	1/4	7.1	22	22	22.8	22.0	33.3	43.4
SMC 12M - 6N	12	3/8	9.5	22	22	22.8	22.0	33.3	43.4
SMC 12M - 8N	12	1/2	9.5	22	22	22.8	22.0	38.9	49.0
SMC 12M - 12N	12	3/4	9.5	27	22	22.8	22.0	40.4	50.5
SMC 14M - 4N	14	1/4	7.1	24	25	24.4	22.0	34.0	44.1
SMC 14M - 6N	14	3/8	9.5	24	25	24.4	22.0	34.0	44.1
SMC 14M - 8N	14	1/2	11.1	24	25	24.4	22.0	38.9	49.0
SMC 16M - 6N	16	3/8	9.5	24	25	24.4	22.0	34.0	44.1
SMC 16M - 8N	16	1/2	11.9	24	25	24.4	22.0	38.9	49.0
SMC 16M - 12N	16	3/4	12.7	27	25	24.4	22.0	40.4	50.5
SMC 18M - 8N	18	1/2	11.9	27	30	24.4	22.0	40.4	50.5
SMC 18M - 12N	18	3/4	15.1	27	30	24.4	22.0	40.4	50.5
SMC 20M - 8N	20	1/2	11.9	30	32	26.0	22.0	42.2	52.3
SMC 20M - 12N	20	3/4	15.9	30	32	26.0	22.0	42.2	52.3
SMC 22M - 12N	22	3/4	15.9	30	32	26.0	22.0	42.2	52.3
SMC 22M - 16N	22	1	18.3	35	32	26.0	22.0	47.0	57.1
SMC 25M - 12N	25	3/4	15.9	35	38	31.3	26.5	45.2	57.5
SMC 25M - 16N	25	1	21.8	35	38	31.3	26.5	50.0	62.3
SMC 28M - 16N	28	1	21.8	41	46	36.6	36.6	51.6	72.4
SMC 28M - 20N	28	1-1/4	21.8	46	46	36.6	36.6	52.3	73.1
SMC 30M - 20N	30	1-1/4	26.2	46	50	39.6	39.2	55.6	77.2
SMC 32M - 20N	32	1-1/4	28.6	46	50	42.0	41.6	56.6	79.6
SMC 38M - 24N	38	1-1/2	33.7	55	60	49.4	47.9	64.0	91.6

• All dimensions in millimeters unless specified as "inch". Dimension are for reference only, subject to change

SMC Male Connector



Connects Metric Tube To Female ISO Tapered Thread

Part No.	Tube O.D. D	T R (PT)	d Min	Width Across Flat		A	B	I	L
				h	H				
SMC 2M - 2R	2	1/8	1.7	12	12	12.9	15.3	23.9	30.5
SMC 3M - 2R	3	1/8	2.4	12	12	12.9	15.3	23.9	30.5
SMC 3M - 4R	3	1/4	2.4	14	12	12.9	15.3	29.0	35.6
SMC 4M - 2R	4	1/8	2.4	12	12	13.7	16.1	24.6	31.2
SMC 4M - 4R	4	1/4	2.4	14	12	13.7	16.1	29.7	36.3
SMC 6M - 2R	6	1/8	4.8	14	14	15.3	17.7	25.4	32.8
SMC 6M - 4R	6	1/4	4.8	14	14	15.3	17.7	30.5	37.9
SMC 6M - 6R	6	3/8	4.8	18	14	15.3	17.7	31.0	38.4
SMC 6M - 8R	6	1/2	4.8	22	14	15.3	17.7	37.3	44.7
SMC 8M - 2R	8	1/8	4.8	15	16	16.2	18.6	26.7	34.2
SMC 8M - 4R	8	1/4	6.4	15	16	16.2	18.6	31.2	38.7
SMC 8M - 6R	8	3/8	6.4	18	16	16.2	18.6	31.8	39.3
SMC 8M - 8R	8	1/2	6.4	22	16	16.2	18.6	38.1	45.6
SMC 10M - 2R	10	1/8	4.8	18	19	17.2	19.5	28.7	36.3
SMC 10M - 4R	10	1/4	7.9	18	19	17.2	19.5	33.3	40.9
SMC 10M - 6R	10	3/8	7.9	18	19	17.2	19.5	33.3	40.9
SMC 10M - 8R	10	1/2	7.9	22	19	17.2	19.5	38.9	46.5
SMC 12M - 4R	12	1/4	7.1	22	22	22.8	22.0	33.3	43.4
SMC 12M - 6R	12	3/8	9.5	22	22	22.8	22.0	33.3	43.4
SMC 12M - 8R	12	1/2	9.5	22	22	22.8	22.0	38.9	49.0
SMC 12M - 12R	12	3/4	9.5	27	22	22.8	22.0	40.4	50.5
SMC 15M - 8R	15	1/2	11.9	24	25	24.4	22.0	38.9	49.0
SMC 16M - 4R	16	1/4	7.1	24	25	24.4	22.0	34.0	44.1
SMC 16M - 6R	16	3/8	9.5	24	25	24.4	22.0	34.0	44.1
SMC 16M - 8R	16	1/2	11.9	24	25	24.4	22.0	38.9	49.0
SMC 16M - 12R	16	3/4	12.7	27	25	24.4	22.0	40.4	50.5
SMC 18M - 8R	18	1/2	11.9	27	30	24.4	22.0	40.4	50.5
SMC 18M - 12R	18	3/4	15.1	27	30	24.4	22.0	40.4	50.5
SMC 20M - 8R	20	1/2	11.9	30	32	26.0	22.0	42.2	52.3
SMC 20M - 12R	20	3/4	15.9	30	32	26.0	22.0	42.2	52.3
SMC 22M - 12R	22	3/4	15.9	30	32	26.0	22.0	42.2	52.3
SMC 22M - 16R	22	1	18.3	35	32	26.0	22.0	47.0	57.1
SMC 25M - 12R	25	3/4	15.9	35	38	31.3	26.5	45.2	57.5
SMC 25M - 16R	25	1	21.8	35	38	31.3	26.5	50.0	62.3
SMC 28M - 16R	28	1	21.8	41	46	36.6	36.6	51.6	72.4
SMC 28M - 20R	28	1-1/4	21.8	46	46	36.6	36.6	52.3	73.1
SMC 30M - 20R	30	1-1/4	26.2	46	50	39.6	39.2	55.6	77.2
SMC 32M - 20R	32	1-1/4	28.6	46	50	42.0	41.6	56.6	79.6
SMC 38M - 24R	38	1-1/2	33.7	55	60	49.4	47.9	64.0	91.6

• All dimensions in millimeters unless specified as "inch". Dimension are for reference only, subject to change