

**Rabbit Anti CD43 [MD133R]: RM0434, RM0434RTU7**

**Intended Use:** For Research Use Only

**Description:** CD43 (leukosialin, sialophorin, or leukocyte sialoglycoprotein) is a cell surface glycoprotein which is expressed on all thymocytes and T-cells. CD43 is involved in activation of T cells, B cells, NK cells, and monocytes. From 70 to 90% of T-cell Lymphomas and from 22 to 37% of B cell Lymphomas are labeled with this antibody. No reactivity has been observed with reactive B cells. So, a B lineage population that co-expresses a T-cell marker is highly likely to be a malignant lymphoma rather than a reactive B cell population. When used in combination with CD45 and L26, effective immunophenotyping of the majority of paraffin-embedded lymphomas can be obtained. Co-staining of a lymphoid infiltrate with CD20 and CD3 argues against a reactive process and favors lymphoma.

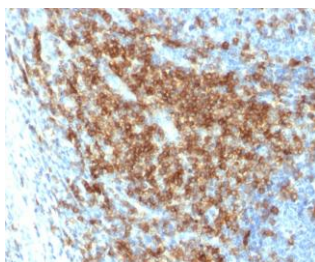
**Specifications:**

Clone: MD133R  
 Source: Rabbit  
 Isotype: IgG  
 Reactivity: Human  
 Localization: Membrane  
 Formulation: Purified ascites in PBS pH7.4, containing BSA, and ≤ 0.09% sodium azide (NaN<sub>3</sub>)  
 Storage: Store at 2°- 8°C  
 Applications: IHC, Flow Cyt., ICC/IF, WB  
 Package:

Description	Catalog No.	Size
CD43 Concentrated	RM0434	1 ml
CD43 Prediluted	RM0434RTU7	7 ml

**IHC Procedure\*:**

Positive Control Tissue: Tonsil, CLL/SLL, lymph node  
 Concentrated Dilution: 50-200  
 Pretreatment: Tris EDTA pH9.0, 15 minutes using Pressure Cooker, or 30-60 minutes using water bath at 95°-99°C  
 Incubation Time and Temp: 30-60 minutes @ RT  
 Detection: Refer to the detection system manual  
 \* Result should be confirmed by an established diagnostic procedure.



FFPE human tonsil stained with anti-CD43 using DAB

**References:**

1. A new CD43 monoclonal antibody induces homotypic aggregation of human leucocytes through a CD11a/CD18-dependent and -independent mechanism. de Smet W, et al. Immunology 79:46-54, 1993.
2. Frequent expression of haemopoietic and non-haemopoietic antigens by neoplastic plasma cells: an immunohistochemical study using formalin-fixed, paraffin-embedded tissue. Petruch UR, et al. Histopathology 20:35-40, 1992.
3. Molecule detected in formalin fixed tissue by antibodies MT1, DF-T1, and L60 (Leu-22) corresponds to CD43 antigen. Stross WP, et al. J Clin Pathol 42:953-61, 1989.

Doc. 100-RM0434  
Rev. A