

**COUPLING (H x H)**



Part Number	Size	Qty	List Price
V-103	3"	50	\$8.33
V-104	4"	50	10.05
V-106	6"	24	37.20
V-108*	8"	4	120.32

**REPAIR COUPLING (H x H - NO STOP)**



Part Number	Size	Qty	List Price
V-144	4"	30	\$12.30

**REDUCER COUPLING (H x H)**



\*Tapered

Part Number	Size	Qty	List Price
V-1043	4x3"	40	\$15.90
V-1064	6x4"	24	50.03
V-1064T*	6x4"	15	52.53
V-1084*	8x4"	8	219.84
V-1086*	8x6"	8	231.62

**ADAPTER COUPLING (H x DWV H)**



\*Tapered

Adapter fits over the Spigot End of the Sewer Pipe and allows for the transition to DWV pipe

Part Number	Size	Qty	List Price
V-2043	4x3"	40	\$18.71
V-2044	4x4"	25	24.87
V-2046	4x6"	24	61.07
V-2046T*	4x6"	15	64.13
V-2066	6x6"	12	82.64

**COUPLING DWV SCHEDULE 40 (DWV H x DWV H)**



Part Number	Size	Qty	List Price
D-104	4"	40	\$18.96

**REDUCER BUSHING (S x H)**



Part Number	Size	Qty	List Price
V-1143 (FLUSH)	4x3"	25	\$19.00

**REDUCER BUSHING (S x H)**



Part Number	Size	Qty	List Price
V-2064	6x4"	24	\$49.14
V-2084*	8x4"	8	173.27
V-2086*	8x6"	8	179.96

Adapter fits into Sewer Hub and allows for connection to Sewer Pipe

**ECCENTRIC REDUCER BUSHING (S x H)**



Part Number	Size	Qty	List Price
V-2164	6x4"	15	\$55.37

Adapter fits into Sewer Hub and allows for connection to Sewer Pipe

**ADAPTER BUSHING (S x DWV H)**



Part Number	Size	Qty	List Price
V-1031	3x1½"	25	\$23.32
V-1041	4x1½"	25	31.09
V-1042	4x2"	25	31.09

**THREADED ADAPTER BUSHING (S x FPT)**



Part Number	Size	Qty	List Price
V-2031	3x1½"	25	\$23.32
V-2041	4x1½"	25	31.09

\* COMING SOON!

**BUSHING DWV ADAPTER SLEEVE (DWV S x H)**



Part Number	Size	Qty	List Price
V-3033	3X3"	25	\$19.39
V-3044	4x4"	25	19.39
V-3066	6x6"	10	76.96

Adapter fits into DWV Hub and allows for transition to Sewer Pipe

**ADAPTER BUSHING (S x DWV H)**



Part Number	Size	Qty	List Price
V-2644	4x4"	24	\$35.57
V-2664	6x4"	12	61.39
V-2666	6x6"	12	97.03

**90° 1/4 BEND LONG TURN (H x H)**



Part Number	Size	Qty	List Price
V-303	3"	25	\$16.31
V-304	4"	36	17.31
V-366	6"	8	99.96

**90° 1/4 BEND SHORT TURN (H x H)**



Part Number	Size	Qty	List Price
V-3303	3"	25	\$13.11
V-3304	4"	25	16.52
V-306	6"	12	56.09

**90° 1/4 BEND STREET ELL LONG TURN (H x S)**



Part Number	Size	Qty	List Price
V-403	3"	25	\$18.96
V-404	4"	36	21.37
V-466	6"	8	186.16

**90° 1/4 BEND STREET ELL SHORT TURN (H x S)**



Part Number	Size	Qty	List Price
V-3404	4"	25	22.06
V-406	6"	12	82.74

**45° 1/8 BEND (H x H)**



Part Number	Size	Qty	List Price
V-503	3"	30	\$11.19
V-504	4"	60	11.64
V-506	6"	18	56.97

**45° 1/8 BEND STREET ELL (H x S)**



Part Number	Size	Qty	List Price
V-603	3"	30	\$13.11
V-604	4"	60	13.56
V-606	6"	18	63.15

**22-1/2° 1/16 BEND (H x H)**



Part Number	Size	Qty	List Price
V-703	3"	25	\$15.53
V-704	4"	30	17.31
V-706	6"	20	62.11

**22-1/2° 1/16 BEND STREET ELL (H x S)**



Part Number	Size	Qty	List Price
V-713	3"	25	\$17.31
V-714	4"	30	18.30
V-716	6"	20	69.03

### TEE (H x H x H)



Part Number	Size	Qty	List Price
V-803	3"	30	\$14.80
V-804	4"	30	19.68
V-8064	6x4"	5	75.87
V-806	6"	8	82.74

### CLEANOUT TEE (H x H x FPT)



Part Number	Size	Qty	List Price
V-8804	4"	30	\$48.33

### 45° WYE (H x H x H)



Part Number	Size	Qty	List Price
V-903	3"	32	\$23.88
V-904	4"	24	28.68
V-9064	6x4"	8	96.54
V-906	6"	6	117.25

### SANITARY TEE (H x H x H)



Part Number	Size	Qty	List Price
V-1103	3"	24	\$20.01
V-1104	4"	25	27.34
V-11064	6x4"	5	141.20
V-1106	6"	6	172.39

### TWO-WAY CLEANOUT (H x H x H)



Part Number	Size	Qty	List Price
V-2204	4"	10	\$56.32

### TWO-WAY CLEANOUT (H x DWV H x H)



Part Number	Size	Qty	List Price
V-2214	4"	10	\$101.75

Allows for the transition from DWV pipe to sewer pipe

### SADDLE TEE (DWV HUB x S&D PIPE)



Part Number	Size	Qty	List Price
V-1204	1½x4"	25	\$34.46

### CROSS (H x H x H x H)



Part Number	Size	Qty	List Price
V-1304	4"	24	\$53.52

### CORRUGATED ADAPTER (S x CI)



Part Number	Size	Qty	List Price
V-44	4x4"	60	\$18.17

### CAP (H)



Part Number	Size	Qty	List Price
V-1403	3"	30	\$7.00
V-1404	4"	30	8.01
V-1406	6"	24	32.73
V-1408*	8"	10	113.10

Fits over the Spigot end of Sewer Pipe

### CLAY ADAPTER (H x CLAY SPIGOT)



Part Number	Size	Qty	List Price
V-1504	4"	24	\$48.33

### CAST IRON ADAPTER (H x CAST IRON SPIGOT)



Part Number	Size	Qty	List Price
V-1604	4"	24	\$48.33

### DOWNSPOUT ADAPTER (DS x H)



Part Number	Size	Qty	List Price
V-1703	2x3x3"	50	\$16.52
V-1704	2x3x4"	50	15.53
V-1705	3x4x4"	25	17.59

The first two sizes are the dimensions of the Downspout Square, the third size refers to the Sewer Pipe

### OFFSET FLUSH-FIT DOWNSPOUT ADAPTER (DS x H)



Part Number	Size	Qty	List Price
V-1713	2x3x3"	24	\$16.52
V-1714	2x3x4"	25	15.53
V-1715	3x4x4"	25	21.86
V-1706	4x6x6"	18	89.61

### DRAIN GRATE (S)



Part Number	Size	Qty	List Price
V-1803	3"	50	\$9.69
V-1804	4"	40	12.12
V-1806	6"	25	53.52

Drops into the Hub end of Sewer Pipe or Fitting

### FITTING CLEANOUT (SEWER SPIGOT x FPT)



Part Number	Size	Qty	List Price
V-1903	3"	40	\$15.53
V-1904	4"	20	15.53
V-1906	6"	12	75.87

### PLUG (MPT THREAD)



Part Number	Size	Qty	List Price
V-2003	3"	50	\$9.34
V-2004	4"	50	9.69
V-2006	6"	12	47.97

### COUNTERSUNK PLUG (MPT THREAD)



Part Number	Size	Qty	List Price
V-2014	4"	48	\$17.82
V-2016	6"	12	75.15

### FITTING CLEANOUT with PLUG



Part Number	Size	Qty	List Price
V-1924	4"	50	\$25.23

### FEMALE ADAPTER (H x FPT)



Part Number	Size	Qty	List Price
V-2103	3"	24	\$20.70
V-2104	4"	24	20.06
V-2106	6"	12	75.64

\* COMING SOON!

# SINGLE WALL CORRUGATED FITTINGS

BLACK HDPE | CONFORMS TO ASTM F405 | **EFFECTIVE MAY 9, 2022**

## EXTERNAL SNAP COUPLING (H X H)



Part Number	Size	Qty	List Price
C-103	3"	24	\$7.52
C-104	4"	20	7.52
C-106	6"	12	17.59

## INTERNAL SNAP COUPLING (I X I)



Part Number	Size	Qty	List Price
C-203	3"	30	\$9.55
C-204	4"	24	9.90
C-206	6"	8	19.75

## REDUCER COUPLING - OFFSET (H X H)



Part Number	Size	Qty	List Price
C-1043	4x3"	20	\$12.56
C-1064	6x4"	8	20.06

## CORRUGATED TO RIGID ADAPTER ( I X H )



Part Number	Size	Qty	List Price
C-33	3x3"	20	\$8.69
C-44	4x4"	24	8.69
C-66	6x6"	12	20.55

Corrugated Hub x Rigid SPG & Insert adapts corrugated tube to rigid pipe or fitting.

## 90° ELBOW - 1/4 BEND (H X H)



Part Number	Size	Qty	List Price
C-303	3"	15	\$21.37
C-304	4"	12	25.80
C-306	6"	4	41.01

## STRAIGHT TEE (H X H X H)



Part Number	Size	Qty	List Price
C-803	3"	12	\$16.59
C-804	4"	12	20.77
C-806	6"	4	46.21

## REDUCING TEE (H X H X H)



Part Number	Size	Qty	List Price
C-8064	6x4"	4	\$47.52

Cut off socket(s) to make 5" or 6" socket.

## BLIND TEE (H X H)



Part Number	Size	Qty	List Price
C-814	4"	10	\$31.19
C-816	6"	4	46.21

Serves as a 6" 90 degree elbow. Cut off 6" cap to make H x H x H tee.

## REDUCING BLIND TEE (H X H)



Part Number	Size	Qty	List Price
C-8164	6x4"	3	\$67.87

Serves as a 6" 90 degree elbow. Socket(s) to make 5" or 6" socket. Cut off 6" cap to make H x H x H tee.

## WYE (H X H X H)



Part Number	Size	Qty	List Price
C-903	3"	10	\$24.04
C-904	4"	8	35.26
C-906	6"	4	53.97

## REDUCING WYE (H X H X H)



Part Number	Size	Qty	List Price
C-9064	6x4"	4	\$55.58

## CAP (H)



Part Number	Size	Qty	List Price
C-1403	3"	20	\$6.51
C-1404	4"	30	13.01
C-1406	6"	10	24.66

## DOWNSPOUT ADAPTER (DS X I)



Part Number	Size	Qty	List Price
C-1703	2x3x3"	15	\$12.69
C-1704	2x3x4"	18	17.11
C-1705	3x4x4"	15	17.11
C-1706	4x6x6"	2	55.55



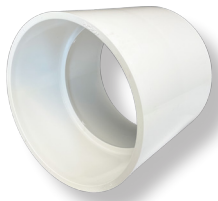
324 DELAWARE AVENUE | OAKMONT PA 15139

ORDERS@NORMANDYPRODUCTS.COM | (T): 800.322.9463 | (F): 800.910.0134 | WWW.NORMANDYPRODUCTS.COM



## MORE NEW PRODUCTS!

OUR FIRST 8" SDR 35 SOLVENT WELD FITTINGS  
ARE AVAILABLE FOR SHIPMENT!



### V-108

8 IN PVC COUPLING  
• Connects 8" pipe



### V-1408

8 IN PVC DRAIN CAP  
• Fits on 8" pipe



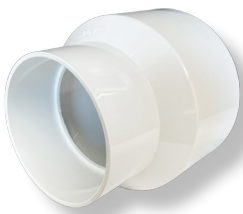
### V-1084

8 IN X 4 IN PVC  
REDUCER COUPLING  
• Transitions from 8" pipe  
to 4" pipe



### V-2084

8 X 4 SPG X H PVC  
S & D EXTENDED BUSHING  
• Fits into 8" socket and  
transitions to 4" pipe



### V-1086

8 IN X 6 IN PVC  
REDUCER COUPLING  
• Transitions from 8" pipe  
to 6" pipe



### V-2086

8 X 6 SPG X H PVC  
S & D EXTENDED BUSHING  
• Fits into 8" socket and  
transitions to 6" pipe

PART	CTN QTY	LIST PRICE
V-108	4	\$120.32
V-1084	8	219.84
V-1086	8	231.62
V-1408	10	113.10
V-2084	8	173.27
V-2086	8	179.96

Be on the lookout for more new products coming soon!

Please contact your sales representative  
or call us directly for pricing and availability or  
to let us know what you'd like to see next!

All products are proudly made in the USA.

# ALL NEW PRODUCTS!

WE'RE EXPANDING OUR PRODUCT LINE TO BETTER SERVE YOU!



## V-8804

4 IN PVC THREADED CLEANOUT TEE

- New, one-piece molded design works with pressure test balls



## V-11064

6 IN X 4 IN PVC REDUCING SANITARY TEE

- 4" branch on this sanitary tee allows for transition to 6" without the need for a reducer bushing



## V-2644

4 IN X 4 IN PVC ADAPTER BUSHING  
S/D SPG X DWV HUB

- For transitioning from 4" DWV pipe to a 4" sewer and drain hub or socket



## V-2666

6 IN X 6 IN PVC ADAPTER BUSHING  
S/D SPG X DWV HUB

- For transitioning from 6" DWV pipe to a 6" sewer and drain hub or socket

PART	CTN QTY	LIST PRICE
V-8804	15	\$48.33
V-11064	5	141.20
V-2644	24	35.57
V-2666	12	97.03

At Normandy Products Company we take quality very seriously. We know that you count on us for top quality in both products and service. We take great pride in meeting and exceeding your expectations.

Be on the lookout for more new products coming soon!

All products are proudly made in the USA.