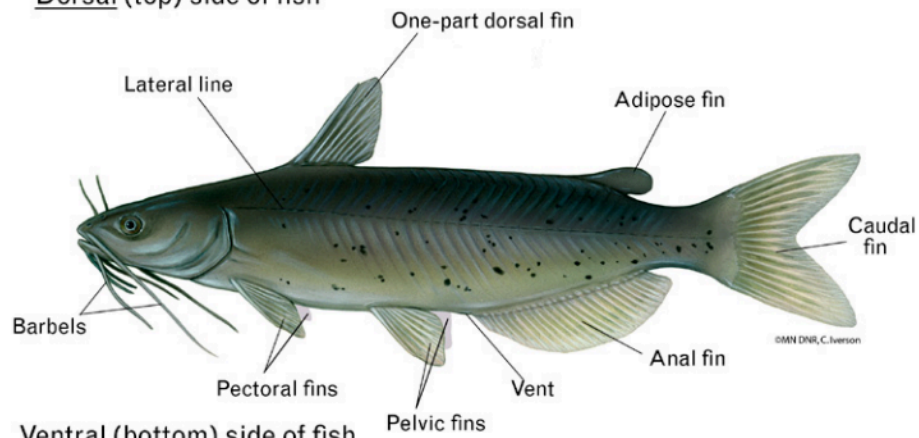


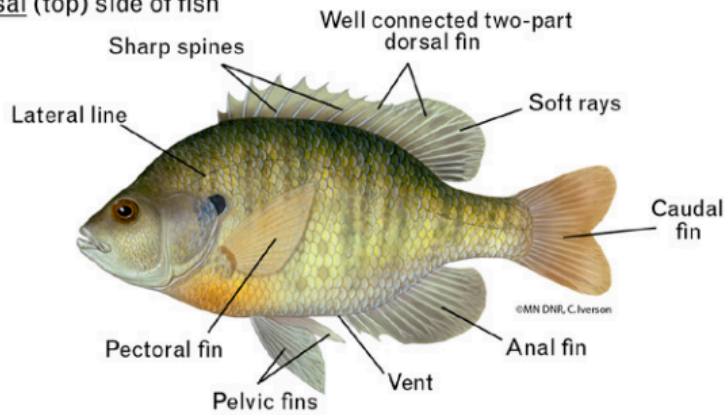
Dorsal (top) side of fish



Ventral (bottom) side of fish

A catfish has dorsal, adipose, caudal, anal, paired pelvic, and paired pectoral fins.

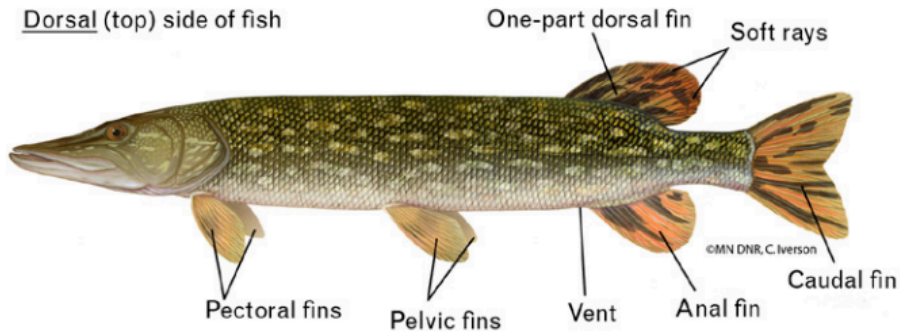
Dorsal (top) side of fish



Ventral (bottom) side of fish

Unlike a catfish, a bluegill lacks an adipose fin. A bluegill does have a large, two-part dorsal fin.

Dorsal (top) side of fish



Ventral (bottom) side of fish

A northern pike lacks an adipose fin. Its one-part dorsal fin is located near its caudal fin.