



Since 1948 Exploring the Wonderful World of Beekeeping Together

The Bee Buzzer

Monthly Publication of the

Northeastern Kansas Beekeepers' Association

VOLUME 76, NUMBER 10

EDITOR: TIM MARSHALL

October 2024

General Meeting

Monday, October 21st, 2024 (7:00 p.m.)

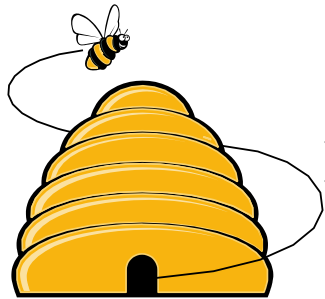
Douglas County Fairgrounds Bldg. 21N

2110 Harper St., Lawrence KS

Main Program: Small Hive Beetles - Biology & Control Beekeepers in our area are starting to see a higher number of Small Hive Beetles or SHB in their hives. The talk will focus on the life cycle and biology of SHB and the current methods of control.

Beelines

By President Cheryl Burkhead



This club is here for you. We educate our members in 'best practices' of beekeeping. We are here to rejoice in your successes, and we are here as a shoulder to cry on when you fail. We are here to support you and give you the knowledge and the strength to continue in your passion for beekeeping.

In November, we will have elections for members to serve on our board. Officers serve a two-year term and may be up for reelection for a second two-year term. Positions up for election are as follows: Secretary, Military/Veteran Chair, Youth Scholarship Chair, and Special Events (Education Coordinator). Officers in the current positions of Secretary, Military/Veteran Chair, and Education Coordinator have offered to serve a second term. If you would like to serve and are interested in any board positions, please let us know. It would be wonderful to have multiple candidates for each position. We will also be taking nominations from the floor in November at the time of elections. Kristi, Becky, and I are actively looking to fill the Youth Scholarship Chairperson position.

You may have heard of the 'Pareto Principle' or the 80/20 rule; 20 % of members in an organization are responsible for doing much of the work. This means that a relatively small portion of the total membership is likely to be active and contribute to the club's goals. NEKBA has a large membership but a relatively small workforce. Many of you started out in beekeeping with our club, attended classes, and unfortunately, you don't remain active in the group. The most successful beekeepers continue to learn via participation in their local organization and networking, attending conferences, and keeping current with the latest literature. I challenge every one of you to become more involved in your club. This group does not exist on its own without the tireless work of a few of its members.



2024 Meeting Dates:

- Oct 17th, Open Apiary at Pendleton’s 5:30pm
- Oct 19th, Beekeepers.com Grand Re-Opening
- Oct 21st, Monthly Meeting at Fairgrounds
- Nov 18th, Monthly Meeting at Fairgrounds



Ol’ Bee Gal



Signs of fall, the days get shorter, and my to-do list gets longer. I try to hurry up and get things done before winter winds make going outside undesirable. Are your hives ready? Plenty of stored food, mite treatments completed AND mite levels checked, mouse guards installed, wind break placed on the north side of the hive.... maybe a few more things depending upon your hive set up.

It's also the season of meetings and gatherings. Fall festivals --opportunities to sell honey. Meetings and conferences—opportunities to learn about beekeeping and keeping our bees healthy. Now is the time to PLAN to attend one of the many regional or national conferences. These events are a chance to hear from the industry’s best minds and even talk to them in person (they are real people who enjoy talking about bees!). Many NEKBA folks make this part of their fall/winter plans. Steve thinks of them as mini bee-themed vacations.

About selling honey: create a product that shows your pride. You worked very hard for your honey harvest. Bottle it in a shining clean jar or bottle. Make sure no sticky fingerprints mar the outside. Make a label that meets sales guidelines whether you intend to sell it or not—it shows caring and pride. You never know where your bottle of honey may end up and someone may love it so much, they will want to buy more. A correct label has the name of the product in the largest font, “HONEY.” Your business name can be above the word honey but needs to be in smaller font. Include weight (legally it should be both standard and metric). Most important, your contact information. This part can get a bit tricky. If you are listed in the phone book (they still publish phone books) as your business name, you can use just a phone number. Because “local honey” is such a big deal, include at least your town if not your complete address. We also include an email address. This part of the label is to represent a reliable way to contact you. NOT required but things you may wish to include pure, raw, local, unfiltered. None of these has a legal definition and mean almost nothing on a label but people like to see it and think it indicates quality. Do not use organic. None of us in Kansas produces organic honey. Organic is a legal term and means very specific things. Making this claim erroneously can get you in trouble. Do not claim a certain floral source unless you are willing to shell out big bucks to have your honey pollen content tested. You can claim wildflower. That is a unique blend of the flowers in the location of your hives. Whether you give your honey away as a gift or sell it at a craft festival or market, the effort you put into packaging will be noticed! Note: I buy blank labels from www.onlinelabels.com. I print all my own labels. I like to do this because, I can easily make changes and don’t end up with labels I don’t need any longer. I use a very simple label making program called PrintMaster. It is usually used for making cards and such but is easy to use and does what I need. It is not very expensive. Onlinelabels also offers a label making feature they call Maestro. It is VERY simple to use and although not beautifully artistic, produces very nice labels at no extra cost. **Becky Tipton**

SUBSCRIBE TO A MONTHLY BEE MAGAZINE. STAY INFORMED.

[Bee Culture Magazine \(link\)](#) [American Bee Journal \(link\)](#)

Use the links to subscribe directly...annual subscription rates under \$6 per month for both!
This is fantastic information right at your fingertips. As part of your beekeeping experience, it's important to be up to date with the trends in bee biology, honey processing, the industry, and much more!



ASK QUINBY & REMI

Dear Quinby and Remi: I treated my hives for varroa mites, then I did a posttest (a repeat test after the treatment) and my hive is still loaded with mites. What should I do?

Quinby and Remi answer: Doing a posttest is as important as the treatment itself! Good for you for checking. We have heard from many beekeepers this year who have said that their treatments are not working. They are seeing the same results that you are asking about. Unfortunately, it isn't just one form of varroa treatments. For instance, at the

NEKBA open apiary yard, we did a pretest to check for varroa and had over 20 mites! This was in August. The group treated with Formic Pro (it was a cool week). The next time the open apiary met there they did a posttest and still had 10 mites! They are now being treated with a regimen of Apiguard, 3 treatments and a 4th if needed.

Did you know that the directions have changed for Apiguard? If two treatments don't work, you can now do a third or fourth treatment, if needed.

Did you know that if the Formic Acid treatments don't work the directions say that you can repeat the treatments?

Did you know that the directions for the Apivar strips now read that halfway through the treatment (6-8 weeks) you should go into your hive and scrape the strips to reactivate the chemical. If not, it doesn't work.

We've had friends who regularly use oxalic acid vaporization methods to treat their bees with poor results too! There are no foolproof methods available anymore.

It's just plain scary that tried and true treatments are not working, even after religiously alternating from season to season and using them correctly.

Dear Quinby and Remi: My hive is queenless now what should I do?

Quinby and Remi answer: The common saying by the "old folks" is take your loses in the fall. At the NEKBA open apiary, the club lost two queens during the Formic Acid treatment. They could have:

- Requeened
- Combined with another hive

The group got the problem solve and decided that by the time we got a new queen, got her installed and laying too much time would have passed to do the hives much good so the choice was to combine the hives, so we put one deep (hive body) on each of 4 hives using the paper method. That's the best part of the open apiaries is the problem solving with the beekeepers that show up. You never know what you will find!

Quinby and Remi would love to answer your questions. Contact them my emailing their owner at heartlandhoneyks@gmail.com.



The NEKBA Beeyard

At the open apiaries you can expect to go through hives to see all stages of brood, queens, and take part in assessing the hives and queens. A great deal of time is also spent on using your smoker and hive tool and talking to participants about issues they are seeing in their hives. Bee suits are available and only NEKBA hive tools and smokers will be allowed in the apiary. The hives are located at Pendelton's Country Market 1446 E 1850 Rd, Lawrence, KS 66046. These events are free if you have signed up to be a GPMB member. To sign up to be a part of the Great Plains Master Beekeeping program go to <http://gpmb.unl.edu>. **but we ask for a \$10 donation for others, cash. The money will be used for future maintenance of the club bee yard. We do ask that you preregister at our sign-up genius link:**

<https://www.signupgenius.com/go/20F0C48ADA82BABF49-48334714-look>

Dates subject to change:

Thursday, October 17 5:30-6:30 winterizing hives

Tips for October

- BeeKeepers.com has a Grand Reopening Oct 19th, mark your calendar for the date!
- Winter is coming, feed 2:1 if needed!
- Entrance reducers or mouse guards should be on now, wind breaks, etc., still time to get things done and enjoy the weather.
- All queen excluders should be removed as well as surplus honey.
- All re-queening should be behind us at this time.
- Repair and paint that equipment in use in your outlying yards, which is import before it gets too cold.
- Do good notes now on your hives to help for spring.



Military/Veterans Apprentices Program

Are you a veteran or on active duty and thought about getting into beekeeping? The Northeast Kansas Beekeepers Association (NEKBA) offers an apprenticeship for veterans and active-duty service members that covers the cost of education, bees, and equipment. The association also provides a mentor to help you with your journey.

Application must be submitted by 31 October. Spots are limited, and more information can be found at <http://www.nekba.org/scholarship.html>

As a reminder, the scholarship includes:

1. A two-year NEKBA membership.
2. A beginner beekeeping seminar and textbook.
3. A complete set of Langstroth woodenware for a new beehive.
4. A package of bees or a nucleus colony to start your hive.
5. Essential beekeeping gear: hat, veil, gloves, hive tool, and bee smoker.
6. One year of mentoring from a qualified NEKBA member.

The Legislative Update 2024 by Buck Bradley (re-printed from KHPA "Cappings" with permission)

We wanted to provide a quick update on the legislative front. A small team is working to organize "Honey Bee Day" at the Kansas Capitol in Topeka. This event aims to raise awareness about the bill that would eliminate the commercial kitchen requirement for selling honey and honey-comb for small and mid-size beekeepers in retail settings, aligning Kansas with Missouri's current law.

Another key goal is to highlight the importance of honey bees and pollinators to Kansas's environment and economy. Even if the bill passes, we plan to make this an annual event at the Capitol. We want legislators to think of us (KPHA) when discussing bills related to pollinators, knowing they can reach out to us as a resource. The event is tentatively scheduled for early February, with official confirmation to follow in the next newsletter.

We plan to give legislators small jars of honey from KPHA and NEKBA and information about the bill. We will have a booth for the public to receive honey straws and educational materials about pollinators and honey bees. We encourage individuals in the area to join us that day, either by helping at the booth or personally delivering a jar of honey to their representative. More details on how to sign up will be provided in the next newsletter or via a separate email.

If you have any questions, please let me know.

Buck Bradley

785-248-1005. Babradley82@gmail.com

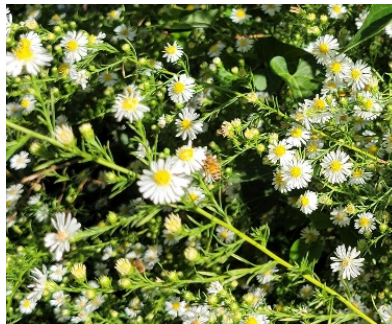
Buck Bradley, Military/Veteran Appr. Liaison

Honey Plants

It's fall and we have to say goodbye to all the great nectar and pollen sources that our honey bees collected from this past spring, summer and fall. Did you keep a record of bloom data? By bloom data I mean what was blooming in your area and when. I hope so. A frequently heard saying is "Beekeeping Is Local". That is so true. What is blooming, in my neighborhood, on March 1st may not bloom in your area for another week or two. Recording bloom times will let you know when to expect a major nectar flow. It can help you know when to put on honey supers, watch for swarm cells, and know when you might need to provide sugar syrup. If you haven't kept bloom data, make a plan this winter and be ready for spring.

As I write this, we are seeing the last of the native sunflowers and goldenrod. They can still be found in pockets around the area and will finish blooming soon. Aromatic and New England Asters are in full bloom. They are pollinator magnets. Our honey bees collect yellow pollen and nectar from these Asters. Depending on growing conditions, these natives can reach 5-6 ft. in height. Blooms are showy, bright, rose-purple flowers with orange-yellow centers. Stems are erect and leafy. Aromatic aster and New England Aster are very similar in appearance. Aromatic aster is easy to distinguish by the pleasant aroma emitted when the foliage is brushed with the hand.

The last food source to bloom in our area is Heath Aster. Heath Aster blooms are small, white, disc shaped flowers with yellow centers. Blooms are plentiful on stiff stems that reach about 3-4 ft. in height. This hearty native thrives in some of the driest, gravelly soil conditions. They can be observed growing along roads, fence rows, edges of fields and so forth. On a sunny fall day, you can expect to see your honey bees, native bees, and butterflies plus an assortment of insects feverishly working this food source. Heath Aster is found in thirty-nine states and Canada. The picture below is Heath Aster.



Fall is a perfect time to plant trees, shrubs, and perennials. Just remember to water at least once a month during the winter if we have not had any precipitation. Water when the temperatures are above freezing. In the spring, those landscaping additions you made will flourish.



I have an update for those that requested to take part in the NEKBA group fall order from the Kansas Forest Service. We were able to order Buttonbush shrubs at a cost of \$3 each. Cheryl Burkhead will be picking up our order on Friday, October 11th. We plan to distribute them, to those that requested to participate, at the NEKBA meeting, on October 21, 2024. If you are unable to attend the meeting or would prefer to pick up prior to the meeting, please contact Cheryl at (785) 224-9077, Berryton, or Jo Patrick (913) 645-8947, Olathe.

Jo Patrick, Honey Plants Chairman



Soap Making Classes – Make and Take

Learn how to make Cold Process Soap with Joli Winer from Heartland Honey. Joli has been making soaps for more than 15 years. She will demonstrate how to safely make soap, plus talk about ingredients and where to get them. She will also demonstrate how to make lotion bars and lip balms.

Each participant will make a 2 lb. batch of soap to take with them, plus receive a lotion bar and a lip balm. They will also get a copy of the recipes. The cost is \$50 per person. There will be 3 sessions to choose from. Classes are offered on Sunday, November 17th from 10-12 or December 15th from 9:00-11:00 or 12:30-2:30. Light refreshments will be provided during class. The class will be held at the Gieringer Family Orchard and Berry Farm in the Blue Barn at 39345 W 183rd St., Edgerton, KS 66021. Questions? You can call Joli at +1(913) 593-3562. Register for the class: <https://goberryfarm.square.site/s/shop>

TIMELY ADVICE (Re-printed from NEKBA's *The Bee Buzzzer*, November 1962 page 2 – by unknown author)

Your entrance reducers or mouse guards should now be on, all queen excluders removed, your surplus honey removed, extracting done, wet combs returned to the bees, removed, re-stacked and fumigated before they are left for the season. All requeening should be behind us at this time, feeding should be in progress and most supers containing honey to be given to colonies should be now on except for a few held over for emergency use later toward spring.

This should leave you free to repair and paint that equipment in use in your outlying yards, which is important before that snow flies. Do not however open colonies if it can possibly be avoided, in yards where there are multiple colonies as this will incite robbing of weaker ones by the stronger, causing complete losses in many cases. If such cannot be avoided, either temporarily close to the entrances of all in the same yard or perform your operations on a calm day when possible, when bees are not, or more than scarcely flying. If under the latter condition, a hive should be kept open for only a very minimum of time.

NEVER place wet combs or honey in any form or permit to be accidently dropped about near the apiary such attractions at this time of the year, or at any time for that matter. It can excite destructive robbing and introduce or spread disease among your colonies or to your neighbor's colonies. Cleanliness is the secret of good beekeeping.



The next Kansas Honey Producers Assn conference is coming soon in early November. November 7 – 9, 2024 *

Courtyard by Marriott – 3020 Riffle Dr. – Salina

Block of Rooms at \$119 have been set aside until Oct. 20th. Call to make your reservations – mention Kansas Honey Producers to get discounted room rates. 785-309-1300. As in the past, there will be several speakers both days, a dinner on Friday evening and lunches.

Featured speakers are Julia Smith, Harvey County Exec. Director USDA, Robin Dolby, Marketing Director "From the Land of Kansas"®, Eric Winger & Brent Barkman, Barkman Honey, David Peck from Better Bee.

David T. Peck, Ph.D.



Dr. Peck is the Director of Research and Education at Betterbee in Greenwich, NY, where he assists in product development and research, and teaches classes and develops scientifically-sound educational materials. His doctoral work in Cornell University's Department of Neurobiology and Behavior was supervised by Professor Tom Seeley. His dissertation research focused on the transmission of mites between bee colonies, as well as the mite-resistance traits of the untreated honey bees living in Cornell's Arnot Forest.

After earning his degree, he has continued to research varroa/bee interactions, including fieldwork in Newfoundland, Canada (where varroa still have not arrived) and Anosy Madagascar (where varroa arrived only in 2010 or 2011). He has served as a teaching postdoctoral fellow in Cornell's Department of Entomology and is still affiliated with Cornell through the Honey Bee Health program in the College of Veterinary Medicine. Dr.

Peck has kept bees for more than a decade, though his home apiary is often full of mite-riddled research colonies, so he doesn't usually produce much honey.

Thursday, November 7

8:00 pm– Executive Committee meets – general meeting room - open to all KHPA Members

Friday November 8

8:00 am – 4:15 pm Registration begins at 8:00 am with silent auction, great learning, business-building, vendor, lunch is included.

6:30- Dinner – Banquet – Special Guest Presentation – Awards – Fun

Saturday November 9

8:00 am – 2:45 pm Registration, and Silent Auction Set Up,

Registration form will be on the KHPA Website: www.kansashoneyproducers.org

Register and pay online: www.kansashoneyproducers.org or mail this lower portion with payment:

Number Attending ____ X \$70.00 - Both days =\$ _____ Lunch Friday & Banquet -& Saturday Lunch

Number Attending ____ X \$40.00 - Friday only \$ _____ Lunch & Dinner included

Number Attending ____ X \$30.00 – Saturday = \$ _____ Lunch

Ks Honey Producers Association annual dues (\$15) \$ _____

Donation \$ _____

Total \$ =====

Names attending - _____

Students under age 18 no charge- names: _____

Submit paper payment to: KHPA – PO Box 171 - Galva, KS 67443 ** email: skoehn@live.com

NORTHEASTERN KS BEEKEEPERS' ASSOC. 2024 MEMBERSHIP APPLICATION

NAME _____
ADDRESS _____
CITY _____ STATE _____ ZIP+4 _____
PHONE _____ Email Address _____
I would like to receive the newsletter, *The Buzzer*, by email Yes _____ No _____

Membership Northeastern KS Beekeepers per year (July-Dec. \$12.50)	\$25.00	_____
Additional family members wanting voting rights \$1.00 per person	\$1.00	_____
Additional family member's name _____ (Youth Membership (18 years of age or under)	\$12.50	_____
Membership for Kansas Honey Producers Association	\$25.00	_____
American Bee Journal (discounted rate through association)	1 year \$29.75	_____
Bee Culture Magazine (or subscribe online at www.BeeCulture.com)	1 year \$34.00	_____
Scholarship / Military/Veteran's Appr. Donation		_____
	Total	_____

Make checks payable to: NEKBA or Northeastern Kansas Beekeepers Assn.

Mail to: Robert Burns, 7601 W 54th Terr., Shawnee Mission, KS 66202 ph. 913-481-3504, rburnshoney@gmail.com

You may join, re-new, register, donate and pay online at www.nekba.org

MENTORING-SWEET PRAIRIE HONEY

Need help with your hives? -Spring inspections, installing packages, making splits, queen evaluation, diagnosis of pests and diseases, mite monitoring and treatment, etc. I can help you with your beekeeping needs! I am a certified master beekeeper with 30+ years of beekeeping experience. I will leave you with a written course of action after our session at your hives. Call or text 913-768-4961 or email Kristi Sanderson at sandersonk09@gmail.com for pricing and appointment times.

BEEKEEPERS.COM

Beekeepers.com (Jordy's Honey Company) in Lenexa, KS. Beekeepers.com is your only local full-service beekeeping store. We carry a full line of Beekeeping Supplies, Protective Clothing, Bottles, Bee Packages, Nucs and Queens. Visit our website Beekeepers.com, to view our entire line of beekeeping supplies. You can also shop in-person at our store in Lenexa. We ship queens directly to YOU! Order at QueenBees.com. Queens available March - October. Our hours are Monday-Friday 9:00-4:00, Saturday 9:00-12:00. You can find our honey at The Overland Park Farmers Market. **Robert Hughes**, 14054 W 107th St, Lenexa, KS 66215, 913-681-5777 or email Info@Beekeepers.com

COTTIN'S HARDWARE & RENTAL

Cottin's stocks a full line of beekeeping equipment year-round including items manufactured by Harvest Lane Honey, Little Giant, and Bug Baffler. Products include hives, supers, frames, foundations, extractors, tools, and protective apparel. We also stock a full line of Home Brewing Mead Making supplies. Located in Lawrence, KS at 1832 Massachusetts Street (South of Dillon's). We are open Monday - Friday 7:30 am - 6:00 pm, Saturday 8:00 am - 5:00 pm, and Sunday 10:00 am - 5:00 pm. You can follow us on Facebook, Instagram and Twitter. Call us at 785-843-2981 or email us at hardware@sunflower.com.

CB'S HONEY

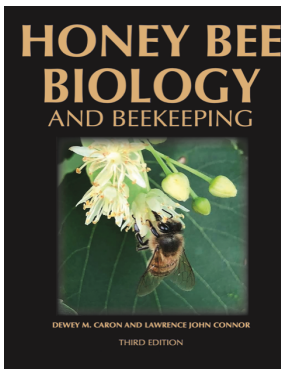
CB's Honey offers pure raw Kansas honey available in 5 gal buckets. Grafted queens and queen cells, and a limited number of nucs/packages. [CB's Honey | Facebook](#). Located just SE of Topeka. 4521 SE 61st Street, Berryton, KS 66409. Call or text Cheryl Burkhead at 785-224-9077 or cherylbhoney@gmail.com

CEDAR RIDGE BEES

5 Frame Nucs for Sale. We are your local Premier Bee Products Dealer specializing in plastic foundation made entirely in the U.S.A. We sell bucket feeders and other bee equipment. Call or text Philip Knaus at 785-581-4216 or contact us at cedarridgebeehives@gmail.com - Check out our bees and products at www.cedarridgebees.com Cedar Ridge Bees 585 N 500 Rd, Overbrook, KS 66524.

T CREEK BEES AND HONEY – Tecumseh/Berryton, KS

Tecumseh Creek winds its way through the home yard lending its name to the brand. Located between Lawrence and Topeka, T Creek offers 5-frame nucs, online honey sales, custom honey packing, wholesale delivery to the Topeka / Lawrence area, 5-gallon buckets of honey, and drop-shipping wholesale service to rural grocery stores and agritourism destinations. Visit www.tcreekbees.com Email: tcreekbees@gmail.com or find the bees on Facebook. Order 2024 5-frame nucs by visiting the website and completing the nuc order form. Owner: Tim Urich. LLC in the State of Kansas and licensed by Kansas Dept of Ag.



Honey Bee Biology and Beekeeping, Third Edition, Dewey M. Caron and Lawrence John Connor,

\$90 postage included. *This book should stay on the dashboard of every beekeeper's truck. It's that good, and that necessary. Kim Flottum, Bee Culture.*

This comprehensive textbook easily replaces many beginner books while adding comprehensive details of bee biology essential to becoming a successful beekeeper and student of the honey bee. First released in 1999, *Honey Bee Biology and Beekeeping* is widely accepted as a major textbook of Apiculture (beekeeping). Beekeepers and bee clubs use it to teach other beekeepers.

Universities use it to teach college students bee biology and beekeeping. It concentrates on the 'why', 'how' and 'when' of beekeeping. It explains bee and beekeeping basics in a manner meaningful to people who lack an extensive back-ground in biology. Yet it is not over-simplified and provides a meaningful source of beekeeping information for the informed beekeeper. The Third Edition has been carefully edited, updated and expanded to 480 pages. New chapters have been added, as have colorful new graphics and photographs. The Glossary has also been expanded. **Wicwas Press LLC Kalamazoo, MI 49001 - www.wicwas.com**

The Association does not endorse nor evaluate the advertisements, products, or services offered in the Buzzer.

Northeastern Kansas Beekeepers Association
Robert Burns, Treasurer
7601 W 54th Terr
Shawnee Mission, KS 66202-1129

Address Service Requested

Meeting

Monday, Oct 21st, 2024 - Fairgrounds

The Northeastern Kansas Beekeepers' Association

Membership is open to anyone interested in bees or bee culture. Dues are \$25.00 per calendar year (December 31-December 31) for the first in the family joining. Those joining in July or later in the year may pay \$12.50 for ½ year. Additional members of a family wanting voting privileges shall be assessed dues at \$1.00 per year. Youth memberships (18 years of age and younger) are \$12.50 per year. Please submit new memberships and renewals to the treasurer or on-line at www.nekba.org.

The Bee Buzzer is the official publication of the Northeastern Kansas Beekeepers' Association, Inc. and is published monthly. Commercial ads are accepted in the newsletter for a fee; non-commercial ads by paid members are accepted & are free.

The library of the association is free to all members. Books may be checked out at the meetings and kept for a period of 30 days. The bee publications, *The American Bee Journal* and *Bee Culture* can be subscribed to through the treasurer or on-line. The *American Bee Journal* is offered at a discount through the Association only.

The Association meets each month, generally on the third Monday at 7:00 p.m. except during the months of January and July. This is a non-profit organization; elected officers serve without pay. Everyone is invited to attend the meetings. Check *The Bee Buzzer* or website at www.nekba.org each month for the actual date, time, and location. If the weather is bad, call an officer or check the website to find out if the meeting will be held or cancelled.

2024 Officers

President: Cheryl Burkhead , 4521 SE 61st St., Berryton, KS 66409 cbfritz@aol.com	785-224-9077
1st VP (Program Chair): Matt Brandes , 4741 Highway K 68, Wellsville, KS 66092 matthew@n523rv.com	913-706-3087
2nd VP (Librarian): Michael Hewitt , 9221 SE Berryton Rd, Berryton, KS 66409 garlicranch69@gmail.com	785-230-0827
3rd VP (Honey Plants): Jo Patrick , 611 E Sheridan St., Olathe, KS 66061 brian-patrick@sbcglobal.net	913-645-8947
Secretary: Elaine Ellenz , 17650 W 113 th St., Olathe, KS 66061 elaineellenz@gmail.com	913-515-1607
Treasurer: Robert Burns , 7601 W 54 th Terr., Shawnee Mission, KS 66202 rburnshoney@gmail.com	913-481-3504
Youth Scholarship Chair: Dale Spurlin , 24964 160 th Ct., Leavenworth, KS 66048 LightedPathHoney@outlook.com	913-775-0997
Military/Veteran Appr. Liaison: Buck Bradley , 11 E 900 Rd., Baldwin City, KS 66006 buckusmc00@hotmail.com	785-248-1005
Editor: Tim Marshall , 4736 Halsey St., Shawnee, KS 66216 flyinmonk@yahoo.com	816-392-6854
Special Events Coordinators:	
(Classes): Kristi Sanderson , 1252 E Frontier Ln., Olathe, KS 66062 sandersonk09@gmail.com	913-768-4961
(Funday): Joli Winer , 19201 S Clare Rd, Spring Hill, KS 66083 heartlandhoneyks@gmail.com	913-593-3851
Webmaster: Robert Burns , 7601 W 54 th Terr., Shawnee Mission, KS 66202 rburnshoney@gmail.com	913-481-3504

Visit on-line at www.nekba.org. Save time. Join, re-new, or register.