

**Above, baby Moses or Senmut, Moses or Thutmoses 2 as an adult with serpent on forehead meaning Crown Prince, Caves in Saudi Arabia near modern Al Bad called "Caves of Moses" by the local villagers. Moses was to bring the people back to this area in Saudi Arabia or Midian.**

Ron Wyatt believed Thutmoses 1 became Amenhotep 1 when he went from co-regent to emperor. Therefore, these two names are the same person.

- THUTMOSES 1/ AMENHOTEP 1 = Pharaoh at Moses' birth
  - NEFURE /HATSHEPSUT = "Pharaoh's daughter"
  - SENMUT = **Moses**
  - HATSHEPSUT XNEM AMEN = **Moses**
  - THUTMOSES 2 = **Moses**
  - THUTMOSES 3/ AMENHOTEP 2 = Pharaoh when he fled
  - THUTMOSES 4/ AMENHOTEP 3 = Pharaoh of the Exodus
  - TUTANKHAMEN = 1st-born son of Pharaoh
- 

#### BIBLICAL CHRONOLOGY

1706 BC - Jacob 130 yrs when comes to Egypt to live (Genesis 47:9)

1635 BC - Joseph dies at 110 yrs

1526 BC - Moses born

1486 BC - Moses flees from Egypt at age 40 yrs

1446 BC - **THE EXODUS** (Moses dies at 120 yrs (Deu. 34:7))

**From Joseph and baby Moses in Egypt, to chariot wheels, to the split rock and**

**the blackened, burned peak of Mt. Sinai in Arabia.  
It's here at this web site!**

### **The Traditional Site with zero evidence**

There is a traditional route of the Exodus which has the children of Israel wading in shallow water through an area north of the Gulf of Suez while the tide was out. This area cannot be the crossing site as it does not match the biblical account. A shallow area of water could not drown all of the Egyptian army. Also, they were to leave Egypt proper before encountering the Red Sea crossing. After crossing the Red Sea, the Bible says they encountered the mountain of God or Mount Sinai which is in Midian. Midian is not in the area we call today the Sinai Peninsula. It is instead in Saudi Arabia and can be found on most maps in that location. The traditional Mt. Sinai was "found" by Constantine's "psychic" mother who in the fourth century went around the Holy Land pointing out various sites as the "authentic" biblical sites, such as the birthplace of Christ, the church of the Holy sepulcher (which was a pagan temple during her time), etc. There is no archaeological evidence of the forty year existence of the children of Israel in the Sinai Peninsula.

### **The Majority of Archaeologists**

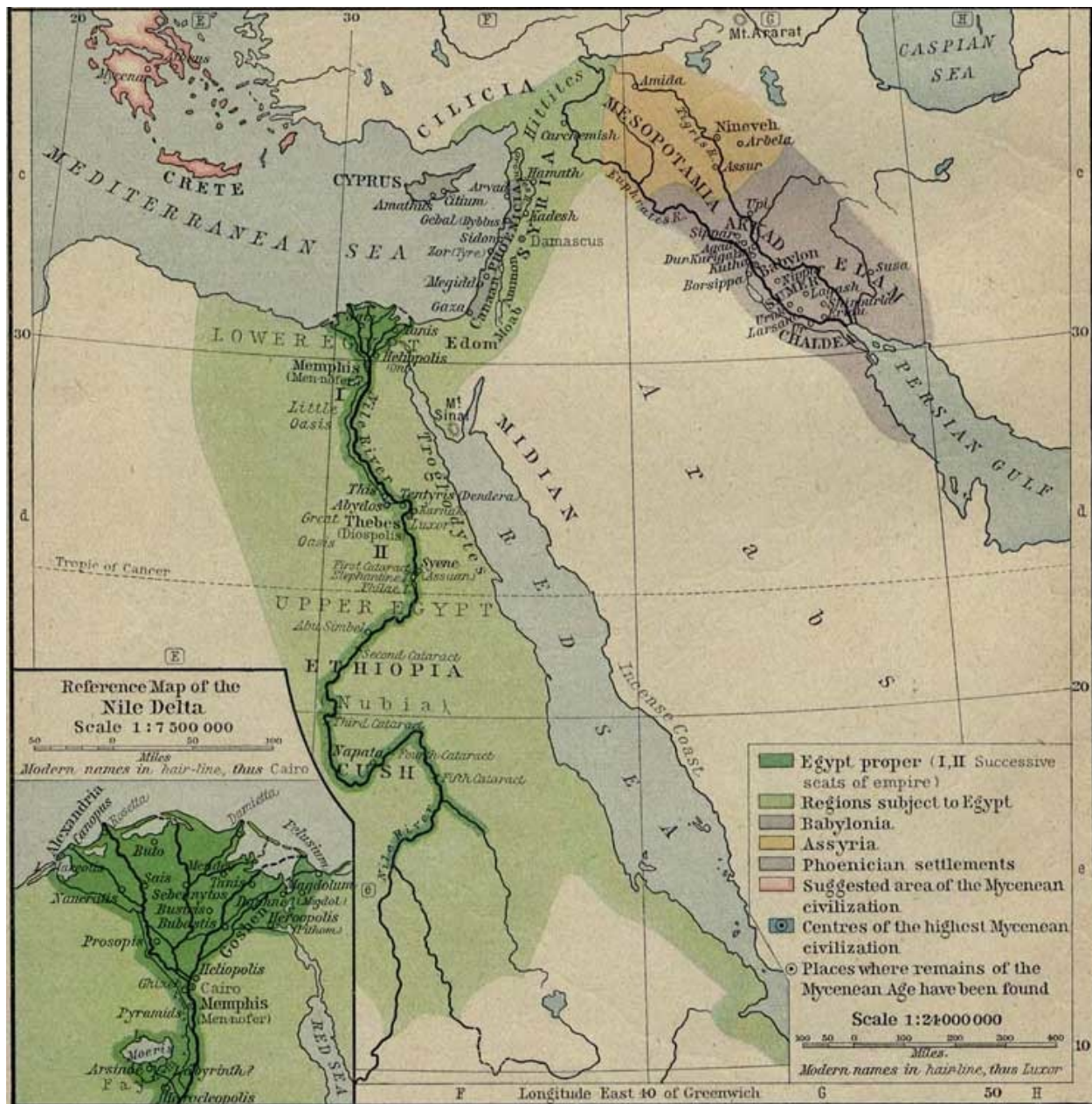
The majority of archaeologists today do not have enough faith in the Bible as the accurate word of God. The majority of archaeologists do not even believe in the exodus of the children of Israel from Egypt, according to Hershel Shanks, editor of the *Biblical Archaeology Review* magazine. They are skeptical of the biblical account, perhaps because of a lack of archaeological evidence in the Sinai Peninsula and a lack of faith. We cannot look to these men to tell us *where* or *if* the exodus took place.

## The Red Sea Crossing Site Found by Ron Wyatt

The children of Israel lived in the Nile delta area or the land of Rameses, and first encamped at the northern end of the Gulf of Suez or Succoth at the beginning of the Exodus. This was the first point where they went into the camping mode. Then they traveled through the wilderness of the Red Sea, or what we



call today the Sinai Peninsula, and encountered the Gulf of Aqaba. (I Kings 9:26 calls this the Red Sea.)



Map above shows us where Midian is located, in Saudi Arabia, not the Sinai Peninsula.

Also, Egypt proper is shown in dark green. Light green areas are areas patrolled by Egyptians.

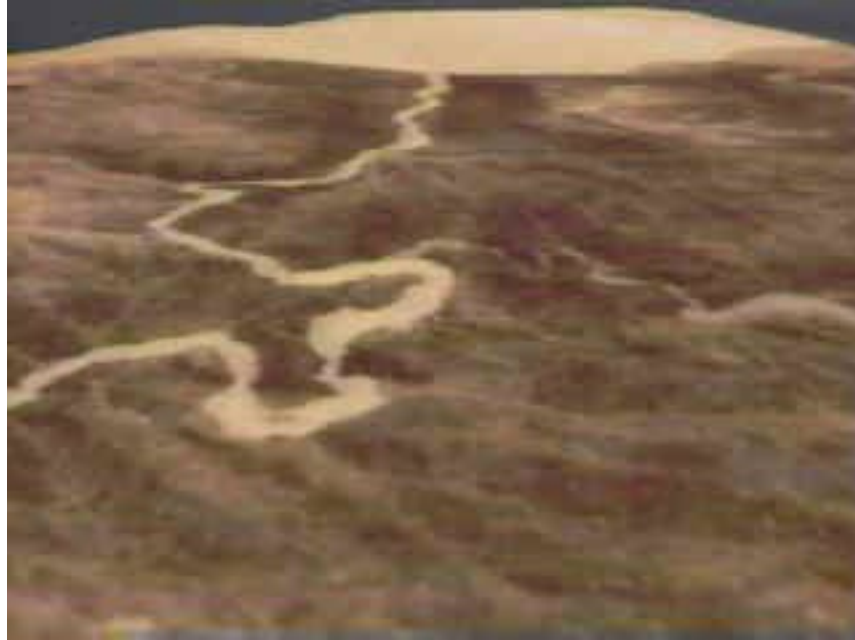
## The Wilderness Has Them Entangled





Wadi Watir had the Children of Israel "entangled." Exit point at the large beach at Nuweiba (2005)

When traveling through "the wilderness of the Red Sea" Ex.13:18, escaping Pharaoh's army, God told Moses to turn south, so they headed through a wadi or canyon area that is called the Wadi Watir which led to the sea. The Bible in Ex. 14:3 says, "They are entangled in the land, the wilderness hath shut them in."



Above, the Wadi Watir winding its way to the Red Sea Crossing site at Nuweiba, had the children of Israel thinking Moses had made a wrong decision to bring them this way.

### **The Beach Where the Crossing Took Place**

When arriving at the beach, the children of Israel felt trapped, as they could not turn back, nor head north because at the northern end of the beach was a three story, Egyptian military fortress which is still standing today undergoing restoration.



Egyptian military fortress, possibly Migdol, blocked any northern escape route along the beach (photo 2005)

Additionally there were mountains obstructing their escape. To the south the mountains came down to the sea, as mentioned by Josephus, "For there was [on each side] a [ridge of] mountains that terminated at the sea, which were impassable by reason of their roughness, and obstructed their flight" *Antiquities of the Jews*, Bk. 2, 15-3. You can see the mountains at the beach today. The people were about to turn against Moses because he had led them to an area where they were trapped and would surely die, or so they thought.



If one looks on a map for a beach area large enough for 2 million people to encamp on the gulf there is only one candidate: Nuweiba Egypt. The beach at Nuweiba is extremely large and could have accommodated a large number of people at the time of Moses. Pi-Hahiroth means, mouth of the hole, which we would apply to the mouth of the canyon above, as mentioned in The Exodus Revealed DVD. Migdol is a fortress, which we would apply to the ancient fort which is located at the narrowest point on the beach where the gulf and the mountains are in close proximity. Today you will find many hotels there and a village.

### **The Granite Column of Solomon**

This column matches one on the other side of the gulf in Saudi Arabia which had the inscriptions intact. The Hebrew words Mizram (Egypt),



death, water, pharaoh, Edom, Yahweh, and Solomon were on that column. Apparently one can conclude



Kevin Fisher at the red granite column, marking the crossing site (Oct. 2005)

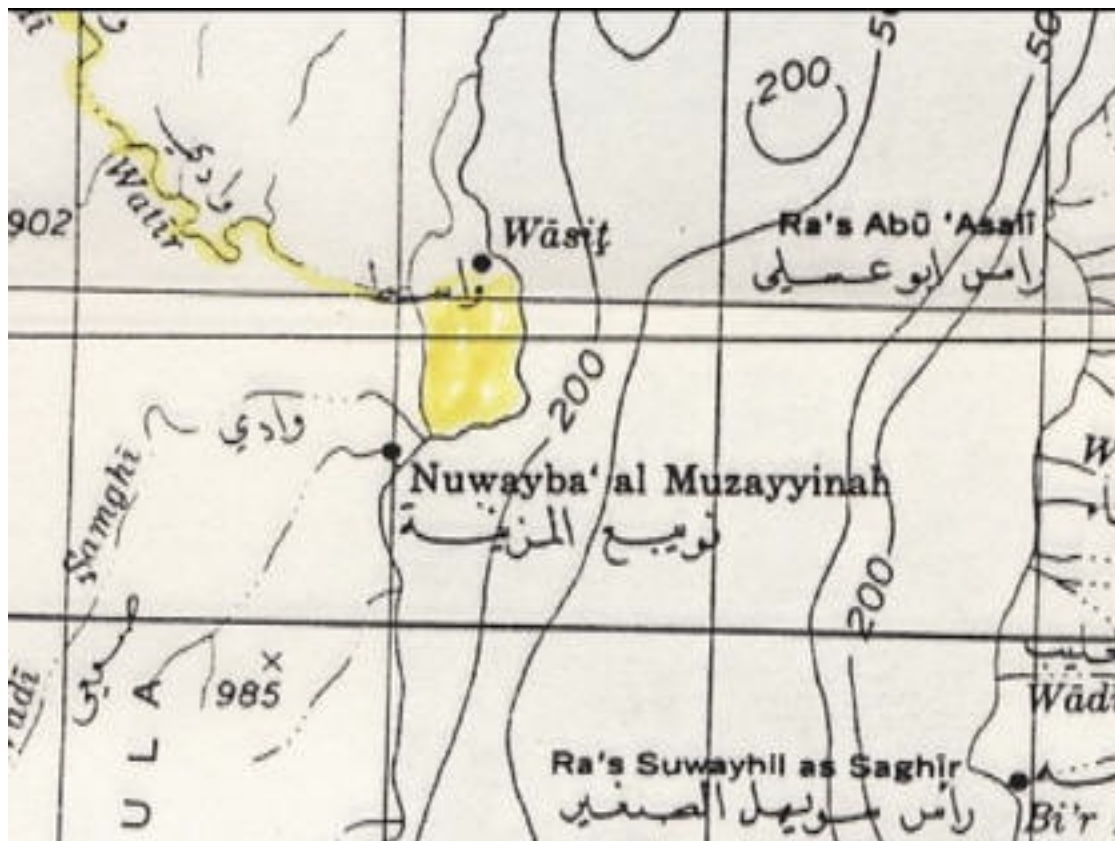
King Solomon had these columns erected 400 years after the miracle of the crossing of the Red Sea on dry land. Solomon's sea port was at the northern tip of the Gulf of Aqaba at Eilat (I Kings 9:26) and he was very familiar with the Red Sea crossing site, as it was in his neighborhood. The Bible even mentions this column! Isaiah 19:19, "In that day there will be an altar to the Lord in the midst of the land of Egypt, and a **pillar** to the Lord at its border." You can visit the beach today and see the column in person, as I was able to do in Oct. 2005.



Above we can see the pillar on Google Earth, about 500 feet from the Gulf.



Top of photo shows us where the column is today. The right side has Nuweiba labeled on the Google Earth map. This is the spot where Ron Wyatt found the column lying at the edge of the water. The name Nuweiba is short for the name listed below:



Above, we see the full name Nuwayba' al Muzayyinah which means . . .





Above, Nuwayba' al Muzayyinah means . . . "Waters of Moses Opening"

This is amazing, at the **exact spot** where the crossing took place, we  
have  
the site confirmed by maps!

**Gradual Contour of Seabed**



God caused a strong east wind to blow the waters back so the people could walk ten miles through the Red Sea to safety in Arabia. The crossing path is about a quarter to a half mile wide and is on a gradual slope down to the bottom of the Red Sea and then up to the Saudi beach. On either side of this path are the depths of the Red Sea, the Eilat Deep and the Aragonese Deep, each 3000 and 5000 feet deep respectively.



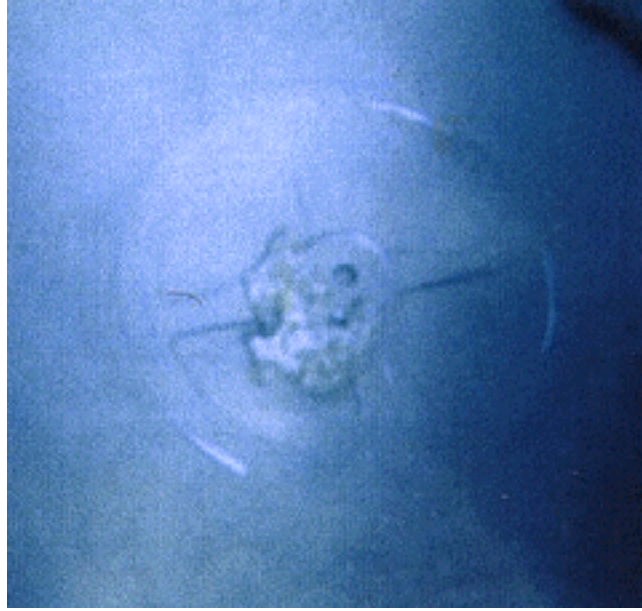
View at Red Sea crossing. Saudi Arabia in distance.

**Chariot Wheels Found in the Sea at Nuweiba!**



Above, chariot wheels fixed to axels standing at attention on the seabed.





Above, left, photo taken of a gilded chariot wheel that remains on the sea floor. It was found by Ron Wyatt using a molecular frequency generator from his boat above, after he set the equipment to search for gold. The Bible said all the chariots of Egypt and 600 choice chariots, or gold veneered models, were in the army pursuing God's people. It is speculated there were 20,000 chariots destroyed that day. Above, right, is a drawing of a four spoke chariot found in an Egyptian tomb from the

same time period. Four, six and eight spoke wheels are found here in the gulf, and were only used at the same time during the 18th dynasty or 1446 BC when the exodus took place.



There are numerous chariot wheels, plus human and horse bones at the crossing site. Above on right, is a human femur bone that is covered by coral, and was tested at Stockholm University. It is from the right leg of a man 165-170cm tall. It is basically mineralized by resting in the Red Sea for 3500 years.



Above is a coral covered chariot wheel on a vertical axel that is buried in the sand. Although this is atypical, Bill Fry found this within 10 minutes of searching at Nuweiba.



Above: Ron Wyatt found this wheel with the raised center hub. A common marker is the raised center hub that will give a metal reading when tested.





Above: I was able to make this ROV from a kit which had three motors and a video camera.



Above: Live video feed from the ROV was fed into another camera for recording purposes.

The 100 foot tether connected to controls for left, right, up, down. We ran this for about 3 hours in 2009.



Above: A chariot wheel was found, possibly connected to an axel.  
Notice the raised center hub.  
It is against the law to anchor a boat so we were floating by this as the  
image was shot by the ROV.



Above is a horse's hoof that is shrunken since drying out. Horses are not found in the Sinai Peninsula today

---

Visit Nuweiba Egypt at the Red Sea Crossing  
Stay at SwissCare Hotel





[www.swisscare-hotels.com](http://www.swisscare-hotels.com)

They can pick you up at Cairo airport or at Taba border crossing at Eilat,  
Israel

---

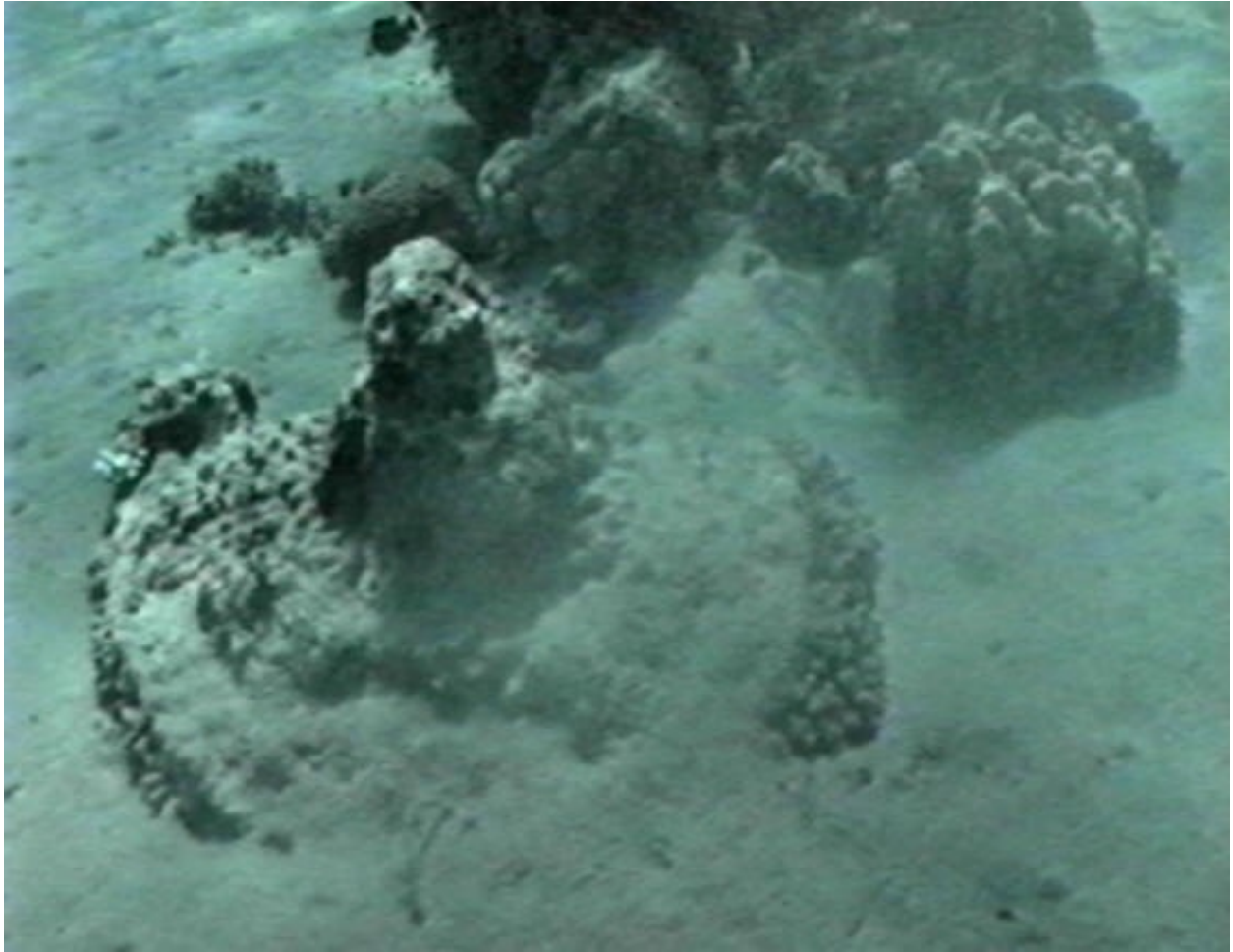
## **Mt. Sinai Must be in Saudi Arabia!**



Above: We look across the Gulf of Aqaba and see the mountains of Saudi Arabia and know that Mt. Sinai **MUST** be in there, not in the Sinai Peninnsula



Above - Aaron Sen stands on the Saudi Arabian beach opposite Nuweiba. The chariot wheel below was found in these Saudi Arabian waters. Aaron's web site is [www.wyattarchaeology.com](http://www.wyattarchaeology.com)

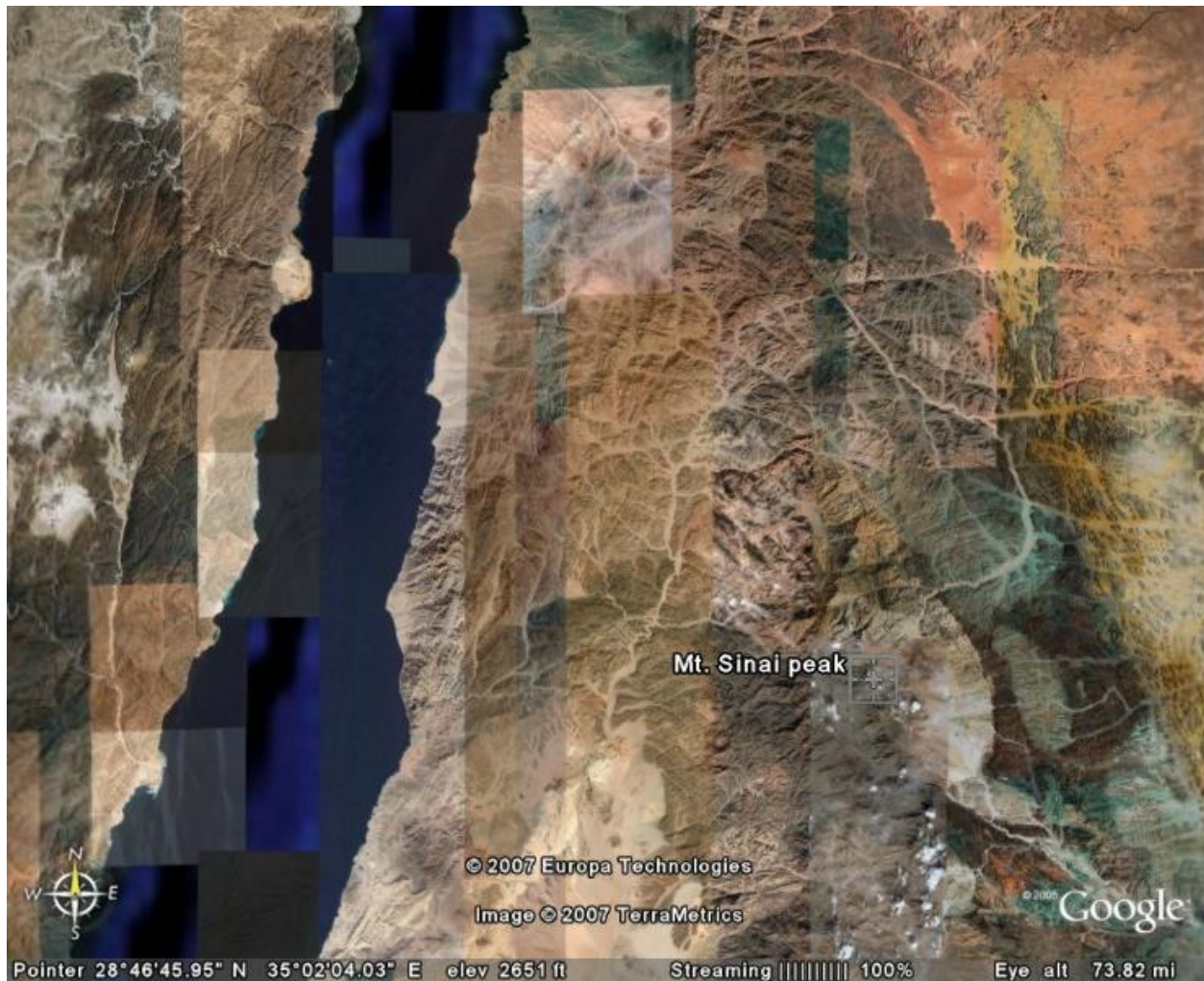


Above, round chariot wheel found off the Gulf of Aqaba coast of Saudi Arabia, opposite of Nuweiba, Egypt. (photo Viveka Ponten)



Above, same wheel but showing the chariot cab next to it. (photo Viveka Ponten)





Above we see the crossing site at the large beach, and we see the real  
Mt. Sinai in the lower right  
in Saudi Arabia, in Midian, named Jebel el Lawz.

**Documentary coming out in 2014 at film  
festivals in USA  
on this discovery and the real Mt. Sinai!  
Multi-million dollar  
production by Mahoney Media**

See [www.PatternsOfEvidence.com](http://www.PatternsOfEvidence.com)  
View their video library.

## *The Exodus Case* book

A wonderful book is available covering the Red Sea crossing. You may order it from [www.amazon.com](http://www.amazon.com) Written by a Swedish scientist, Dr. Lennart Moller, who has extensively researched the material first hand. The book has over 550 color illustrations including topics of Sodom and Gomorrah, the Red Sea Crossing, the real Mount Sinai, and Joseph's grain storage complex.

