

An aerial photograph of a lush green wetland landscape. A winding river flows through the center, surrounded by dense vegetation and patches of water. The background shows a vast expanse of forest under a cloudy sky.

Ecosystem Based Management – Sustainable Land Management

Alfred Ralifo
Policy Officer/Programme Coordinator for
Sustainable Coastal Resource Use and
Management Programme

WWF South Pacific

September, 2013

The Ecosystem Based Management

- is an environmental management approach that recognizes the full array of interactions within and in-between ecosystems!
- recognizes that the way humans exploit their natural resources is dependent on their socio-economic status



© Juergen Freund



Ecosystem Based Management and Community Based Natural Resource Management

Integration of **Ecosystem Based Management (EBM)** into **Community Based Natural Resource Management (CBNRM)** as conservation tools to:

- *ensure food security,*
- *build community resilience,*
- *improve livelihoods*



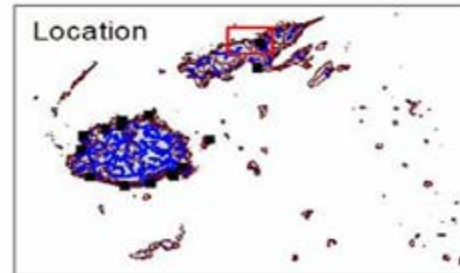
EXAMPLE OF LARGER AGRICULTURAL PLUME WITH HIGHER DISPERSAL CAPABILITY(C=3)



Legend

- Major Population Centers
- ⚡ Emergent Reef
- Plume with N & P Pollution from Agriculture
- ⚡ Rivers
- Catchment Boundaries
- Sugar Cane Production
- Island

Location





National Land Use Policies and Plans

- Fiji is a signatory to United Nations Convention to Combat Land Degradation and Desertification (UNCCD)
 - Fiji National Action Program.
 - Sustainable Land Use Planning.
 - Fiji endorsed its National Rural Land Use Policy June, 2005.
 - Environment Management Act, 2005
 - Fiji Land Use Decree 2010
 - Land Conservation and Improvement Act 1953 (under review)
 - Forestry Decree
 - Peoples Charter for Change, Progress and Prosperity
 - Pillar 5 (Achieving Higher Economic Growth while ensuring Sustainability)
 - Pillar 6 (Making more land available for productive and social purposes)
-



Sustainable Land Management

reduction of impact of land-based activities on rivers and marine ecosystems through awareness, training and capacity building

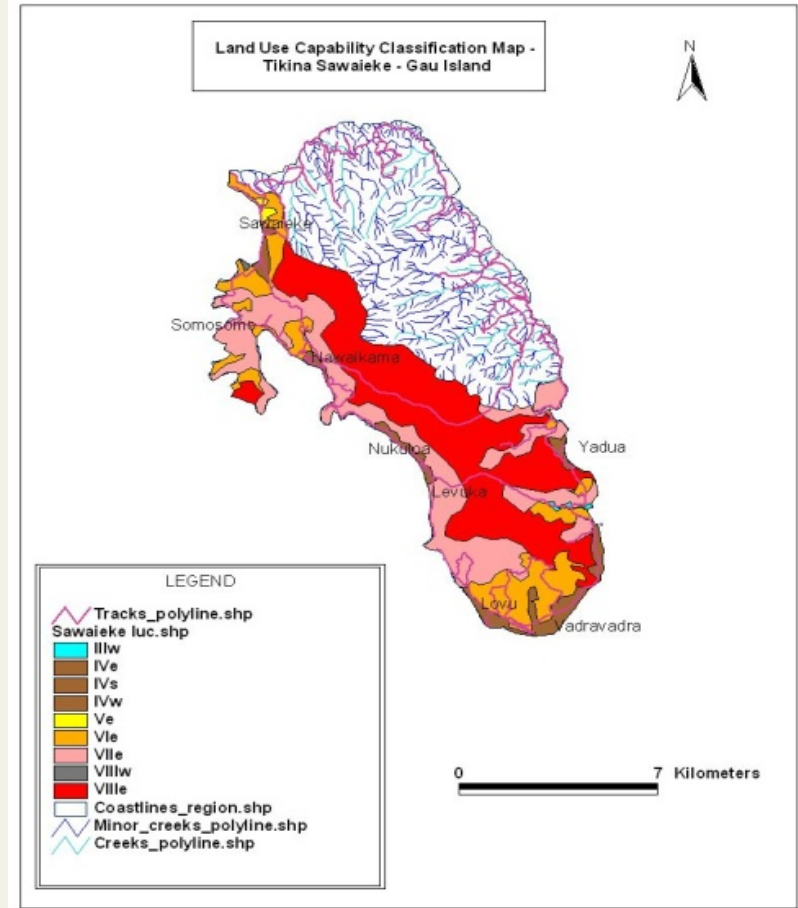
- Establishment of Land-Care Network
- Sustainable Land Management (SLM)
- Sustainable Forestry Management (SFM)
- Animal husbandry
- Bee-farming
- Compost piggeries





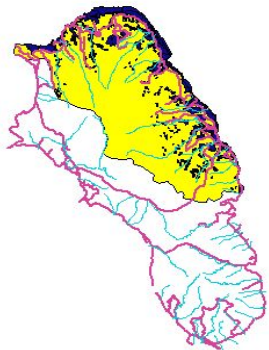
The Process for Community Based Land Care Network and Sustainable Land Use:





- Partnership with Department of Land Use & Planning
- Conduct Biophysical Survey
 - Determines Land Classification
 - Determines soil type
 - Forest Cover
 - Current land use
 - Land Use Capability
- This information will help communities make informed decisions on how to best make use of their land in a sustainable



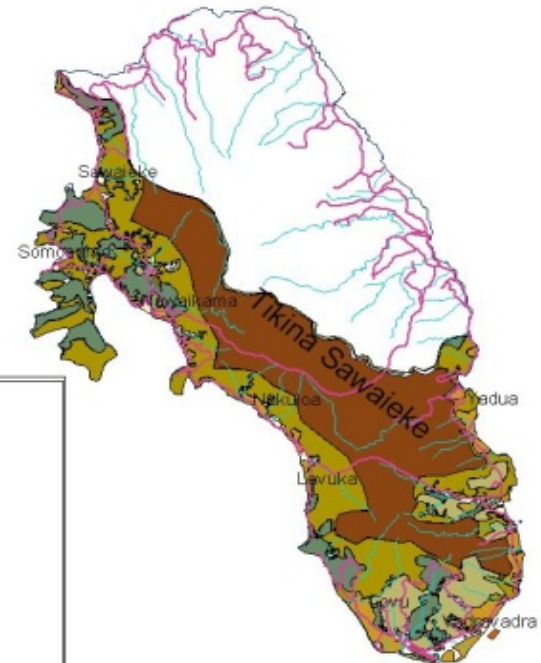


Present Land Use Map- Navukailagi and Vanuaso Tikina



-  Creeks_polyline.shp
-  Tracks_polyline.shp
-  Plus navukailagi.shp
-  Navukailagi boundary.shp

Present Land Use Map of Tikina Sawaieke



LEGEND

-  Tracks_polyline.shp
-  Creeks_polyline.shp
-  Plus navukailagi.shp
-  Navukailagi boundary.shp
-  1
-  2
-  3
-  4
-  5
-  6
-  7
-  8
-  9
-  10
-  11
-  12
-  13
-  14
-  15
-  16
-  17
-  18
-  19
-  20



GIS Unit, Land Use (LRPD)

Root Cause Analysis – Unsustainable Land Use Practices

- Community identify current unsustainable land use practices
- Determine how these practices affect their surrounding ecosystem from the ridges to the reefs
- Identify actions to be taken to reduce such impacts on their natural resources and ecosystems





Community SLM Model Farms – Practical Activity

- SLM Model farms were established to demonstrate sustainable agricultural practices:
 - Contour farming
 - Use of vertivar grass
 - Inter-cropping to improve soil fertility and reduce pests
 - Composting
 - Rehabilitation of riparian zones
 - Crop rotation
 - Organic and green manure
 - Agro-forestry







Establishment of Community Nurseries for Rehabilitation of Deforested Areas:

- Community Awareness on Forest Ecosystems
- Nursery Management, Seed collection and raising
- Rehabilitation of riparian zones and deforested areas with native and fruit trees and commercial species
- Alternative livelihoods
- Sustainable Forestry Management





Follow-Up work after training

- In partnership with Department of Agriculture
 - Transfer of technology to individual farms
 - Finalization of action plans for the District Land Care network
 - Reforestation programmes
 - Implementation, monitoring and evaluation of action plans





Thank you

www.panda.org



Contact Us

Website

wwfpacific.org.fj



Facebook

facebook.com/wwfpacific

Twitter

[@wwfpacificfiji](https://twitter.com/wwfpacificfiji)

YouTube

youtube.com/wwfsouthpacific

