

# ARAPAHOE MEDICAL PLAZA FOR LEASE

13111 EAST BRIARWOOD AVE CENTENNIAL, CO 80112



## Building Features:

Location: 13111 E Briarwood Ave  
Centennial, CO 80112

Building Size: 58,750 SF Lease

Rate: \$23.00 - \$25.00/RSF

Term: 3-5 years

Year Built: 1982

Parking: 235 Surface Spaces

## Comments:

- Great visibility from Arapahoe Road
- Local Ownership
- Elevator Identity
- Monument Signage
- Over 4/1000 RSF Parking Ratio

## Available Space:

- Suite 100 4,378 RSF (Available 3/1/19)
- Suite 130 1,750 RSF
- Suite 260 3,381 RSF

Divisible to: A) 1,000sf  
B) 2,300sf  
C) 1,500sf  
D) 1,800sf

- Suite 350 3,303 RSF
- Suite 310 2,812 RSF (Available 3/01/19)
- Suite 225 4,100 RSF

For more information, please contact:

John Fairbairn  
T 303.226.4764  
John@denverofficespace.com

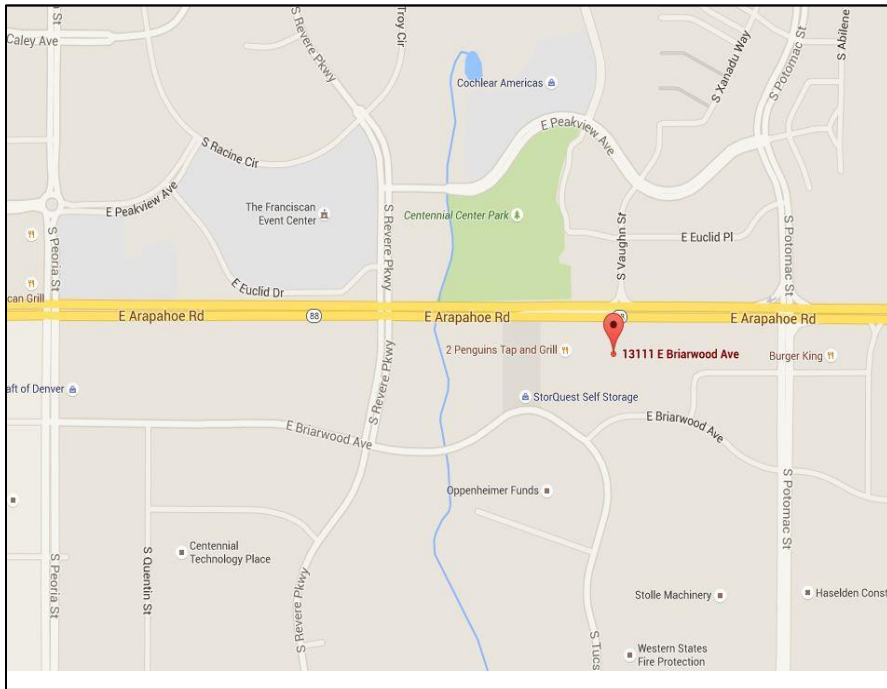
2696 South Colorado Blvd., Suite 320 Denver, CO 80222  
[www.denverofficespace.com](http://www.denverofficespace.com)



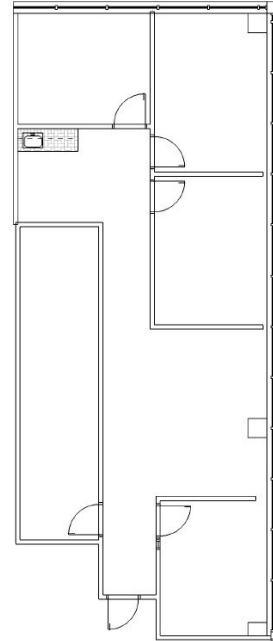
The information above has been obtained from sources believed reliable. While we do not doubt its accuracy, we have not verified it and make no guarantee, warranty or representation about it. It is your responsibility to independently confirm its accuracy and completeness. Any projections, opinions, assumptions or estimates used for example only and do not represent the current or future performance of the property. The value of the transaction to you depends on tax and other factors which should be evaluated by your tax, financial and legal advisors. You and your advisors should conduct a careful, independent investigation of the property to determine to your satisfaction the suitability of the property for your needs.

# ARAPAHOE MEDICAL PLAZA FOR LEASE

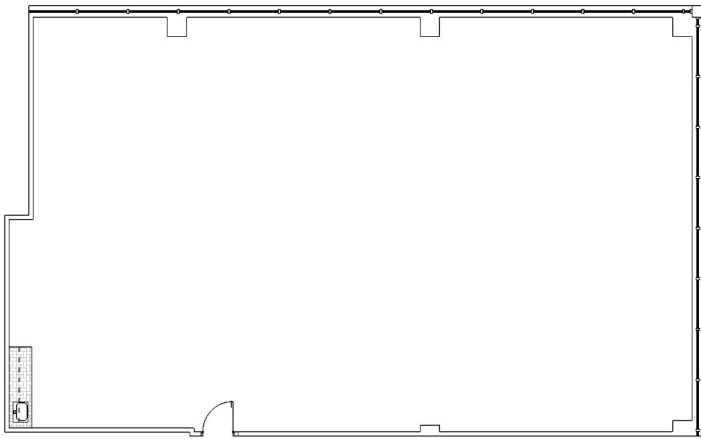
13111 EAST BRIARWOOD AVE CENTENNIAL, CO 80112



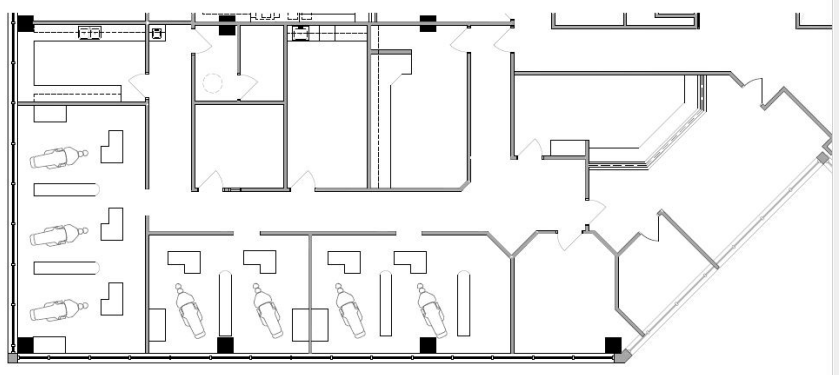
Suite 130 - 1,750 RSF



Suite 260 - 3,381 RSF



Suite 225 - 4,100 RSF



For more information, please contact:



John Fairbairn  
T 303.226.4764  
john@denverofficespace.com

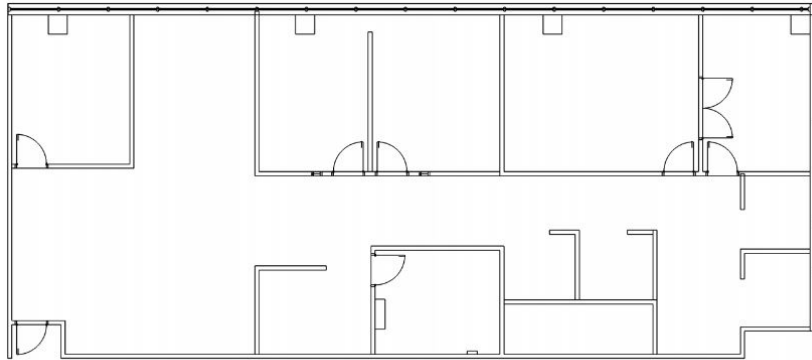
2696 S. Colorado Blvd . Suite 320 . Denver, CO 80222  
[www.denverofficespace.com](http://www.denverofficespace.com)

The information above has been obtained from sources believed reliable. While we do not doubt its accuracy, we have not verified it and make no guarantee, warranty or representation about it. It is your responsibility to independently confirm its accuracy and completeness. Any projections, opinions, assumptions or estimates used for example only and do not represent the current or future performance of the property. The value of the transaction to you depends on tax and other factors which should be evaluated by your tax, financial and legal advisors. You and your advisors should conduct a careful, independent investigation of the property to determine to your satisfaction the suitability of the property for your needs.

# ARAPAHOE MEDICAL PLAZA FOR LEASE

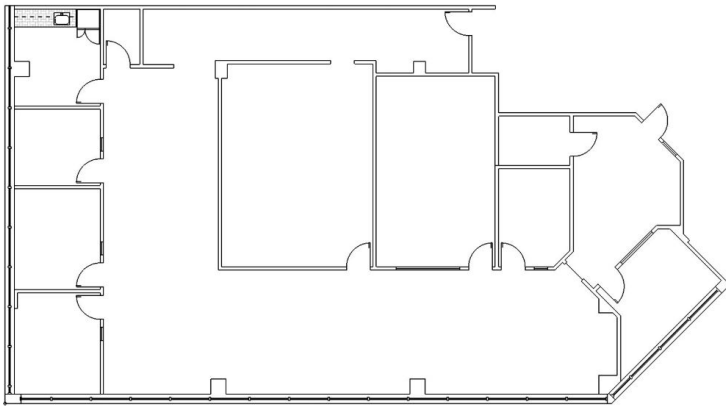
13111 EAST BRIARWOOD AVE CENTENNIAL, CO 80112

Suite 350 - 3,303 RSF

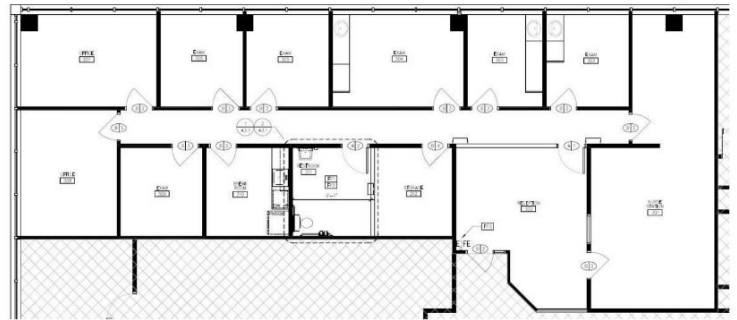


Suite 100 - 4,260 RSF

(Plug and play medical space)



Suite 310 - 2,812 RSF



For more information, please contact:

John Fairbairn  
T 303.226.4764  
[john@denverofficespace.com](mailto:john@denverofficespace.com)



2696 S. Colorado Blvd. | Suite 320 | Denver, CO 80222 | 303-765-4344

[www.denverofficespace.com](http://www.denverofficespace.com)

The information above has been obtained from sources believed reliable. While we do not doubt its accuracy, we have not verified it and make no guarantee, warranty or representation about it. It is your responsibility to independently confirm its accuracy and completeness. Any projections, opinions, assumptions or estimates used for example only and do not represent the current or future performance of the property. The value of the transaction to you depends on tax and other factors which should be evaluated by your tax, financial and legal advisors. You and your advisors should conduct a careful, independent investigation of the property to determine to your satisfaction the suitability of the property for your needs.