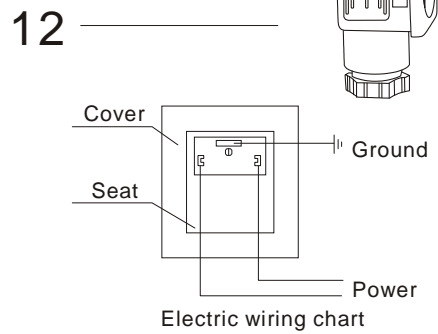
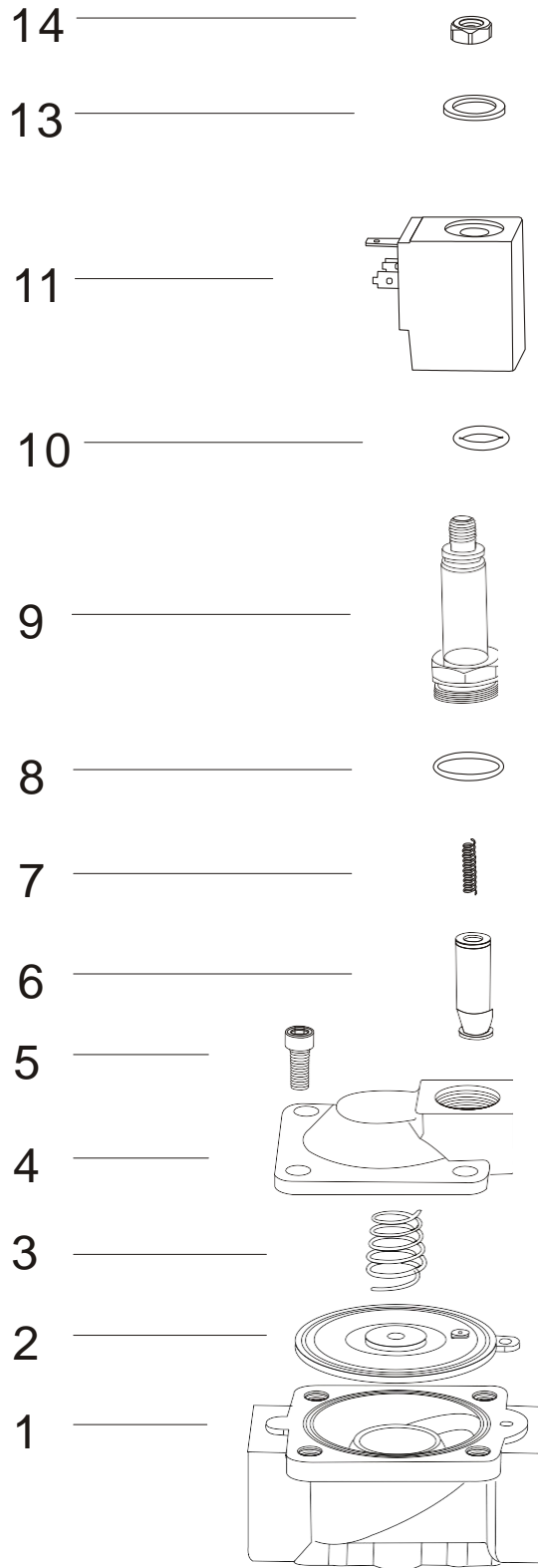


2/2-Way Pilot Operated Solenoid Valve

Components Chart



Code	Components
01	Valve Body
02	Diaphragm
03	Diaphragm Spring
04	Valve Cover
05	Bolts
06	Plunger Assembly
07	Plunger Spring
08	O Ring $\phi 21 \times 1.5$
09	Plunger Tube Assembly
10	O Ring $\phi 16 \times 2.0$
11	Coil
12	Plug
13	Gasket
14	Locknut