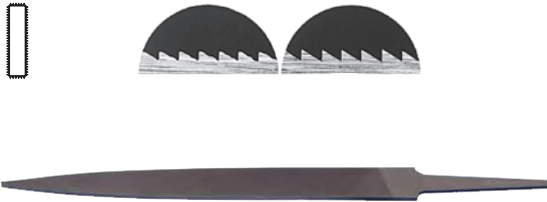


WARDING - SWISS PRECISION



31.392
31.396

An example of the long-lasting quality of Grobet-Swiss Files is shown in the micrographs to the left. On the left is an ordinary file after 10,000 strokes. The Grobet-Swiss file at the right shows hardly any signs of wear after 10,000 strokes.

- Parallel in thickness, tapered in width
- Used for repairing or filing ward notches in keys
- Suited for narrow spaces where other files will not fit
- Double cut top & bottom, both edges are single cut
- Cut #4

MFG #	LENGTH	WIDTH	THICKNESS	EZ #
31.392	4", 100mm	1/2", 12.7mm	3/64", 1.2mm	035561
31.396	6", 150mm	5/8", 15.9mm	5/64", 2.0mm	035563

PIPPIN - SWISS PRECISION



31 269

- Tapered in width and thickness
- Etched cut for fine finishing
- Combines cross-sections of the round file, with the crossing file, along with the edge of a knife file
- For finishing the junction of two different curved surfaces and for opening slots when a "V" shape is required
- Double cut on both sides – top and bottom edge are single cut
- Cut #4

MFG #	LENGTH	WIDTH	THICKNESS	EZ #
31 269	6", 150mm	25/64", 9.9mm	9/64", 3.6mm	035562

ROUND IMPRESSIONING RAT TAIL FILE - SWISS PRECISION



31.283
31 292

- Gradually tapered cut is workable to the point
- Enlarges a hole or rounds off a radius
- Etched cut for fine finishing
- Cut #4

MFG #	SIZE	DIAMETER	EZ #
31.283	4", 100mm	5/32", 4mm	035560
31 292	6", 150mm	1/4", 6.4mm	035559

G

FILE HANDLES



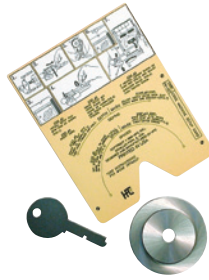
37.781
37.782
37.784

- Made of unbreakable plastic with textured surface for a non-slip grip
- Specially shaped to fit the hand for working comfort even over long periods
- Top hole permits convenient hang-up storage
- Tang-gripping insert is tempered metal, with two threaded sections of different diameters which assures proper alignment and positive hold for files and re-use of handle

MFG #	SIZE	FOR FILE	EZ #
37.781	1	31.283	035555
37.782	2	31.392	035556
37.784	4	31.269, 31.292, 31.396	030329



KEY MACHINE ACCESSORIES



CMB CK

CMB CK

- Easy to use tool kit for use with all Blitz™ and 1200CM code machines
- Designed to quickly and accurately diagnose whether your machine is out of calibration
- When out of calibration the kit is used to calibrate your machine or determine whether factory service is needed



TYX3

TYX3

- Made of Tylon-X, this carbide impregnated brush de-burrs faster, smoother, and lasts 6 times longer than wire

MFG #	DESCRIPTION	EZ #
CMB CK	Calibration Kit	064176
TYX3	Debrurring Brush	005324

POCKET SIZED KEY DECODER KIT



HKD75

- The Pocket Size Decoder Kit determines the original factory depths of most popular keys when re-keying new or worn cylinders
- Lowering the depth pin into each cut, from bow to tip, will indicate the correct depths in the window at the top
- Pivoting depth pin allows for easy decoding of Medeco® angles
- Each information card also lists the manufacturers depth and space specifications
- Supplied with soft carrying case, 3 shims, and 111 information cards

MFG #	DESCRIPTION	EZ #
HKD75	Key Decoder	026420

KEY FILE SETS



KFS6

KFS6

- Key file set contains 6 of 4" #2 cut fine Swiss pattern files with wood handles
- Has rectangular straight, half round tapered, 3-square tapered, warding tapered, round tapered & square tapered
- Includes plastic carrying case



IFH4

IFH4

- Impressioning #4 extra fine file is tapered to a fine point providing a mirror finish to detect impression marks
- Includes protective plastic case

MFG #	EZ #
IFH4	004945
KFS6	004993