

Cosmetology

CHAIR: Teresa Steele

CO-CHAIR: ---

CONTEST DATE: April 26, 2018

CONTEST LOCATION: Hutchinson Community College 200 East 3rd, Hutchinson

CONTEST TIME: 8:00 am

PURPOSE: To evaluate each contestant's preparation for employment and to recognize outstanding students for excellence and professionalism in the field of cosmetology.

ELIGIBILITY: Open to active SkillsUSA members enrolled in programs with cosmetology as the occupational objective.

CLOTHING REQUIREMENT: Official SkillsUSA white dress shirt, black dress slacks, black socks (or skin-tone hose for women) and black leather, work or dress shoes.

NOTE: A white cosmetology smock can be worn with the white dress shirt for men or white top for women.

Official SkillsUSA white polo or Cosmetology attire



2018 KANSAS STATE CHAMPIONSHIPS (KSC) CONTEST UPDATE



CONTEST UPDATES: Follow the Technical Standards for guidelines

CONTEST TIMELINE:

8 am-8:45	Check-in
8:45-10:15	Long hair up
10:20-12:05	Woman's long hair cut
12:05-1:05	LUNCH
1:05-2:40	Uniform layered haircut
2:45 - 4:15	Men's cut
4:20 – 5:00	Written Test

During check-in, contestants will be required to hand in their 1 page resumes as well as being prepared for kit check.

Oral Assessments will take place upon contestant's completion of the written test.

EQUIPMENT AND MATERIALS:

Supplied by the Technical Committee:

- a. Vanities, mirrors, tables and styling chairs
- b. Any and all pictures or literature of styles, haircuts and technical
- c. Woman manikin for hair up do...long haircut...uniform layered hair cut
- d. Man manikin for haircut.
- e. Clamps

Supplied by the contestants:

- a. Cutting shears
- b. Thinning shears
- c. Razor and spare blade
- d. Clipper
- e. Thermal tools (flat iron and/or curling iron)
- f. Blow dryer
- g. Styling products of choice
- h. Finishing spray
- i. Combs
- j. Brushes
- k. Spray Bottle (filled with water)
- l. Towels
- m. Rollers
- n. Clippies or hair clips

- o. All competitors must create a one-page resume and submit a hard copy to the technical committee chair at orientation. Failure to do so will result in a 10-point penalty.
- p. First Aid Kit
- q. Blood Spill Kit

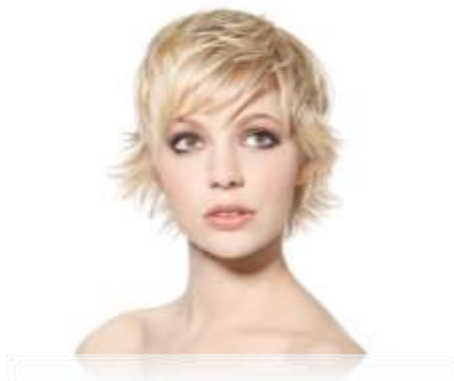
Long hair cut



Men's short hair cut



Uniform short cut



SCORING RUBRIC

Long Hair Design

- Hands sanitized/area cleaned/tools labeled 20
- No bobby pins visible 20
- Hair upswept 20
- Include applicable techniques (ex. Braiding, twists, rolls) 20
- Hair secured with hair pins, bobby pins, and bands as needed 20
- Design clean, smooth, no visible backcombing 20
- Demonstrates balance, form, proportion 20
- Maintained control of tools (irons, pins) 20
- Maintained safety of tools 20
- Completed on time 20

Women's Long Hair Cut

- Hands sanitized/area cleaned/tools labeled 10
- Hair fully wet down 10
- Hair sectioned 10
- Establish a guide 10
- Complete layered haircut 20
- Cross Check 10
- Maintain control of tools 10
- Maintain control of hair 10
- Maintain safety of shears & tools 10
- Duplicate length & texture of picture 20
- Duplicate finished style of picture 20
- Proper products used 10
- Duplicate balance of form, control of texture and hair direction 20
- Properly use tools (hairdryer, shears, irons) 20
- Completed on time 10

Men's Short Hair Cut

- Hands sanitized/area cleaned/tools labeled 10
- Hair fully wet down 10
- Hair sectioned 10
- Establish a guide 10
- Complete layered haircut 20
- Cross Check 10
- Maintain control of tools 10

2018 KANSAS STATE CHAMPIONSHIPS (KSC) CONTEST UPDATE



• Maintain control of hair	10
• Maintain safety of shears & tools	10
• Duplicate length & texture of picture	20
• Duplicate finished style of picture	20
• Proper products used	10
• Duplicate balance of form, control of texture and hair direction	20
• Properly use tools (hairdryer, shears, irons, clippers)	20
• Completed on time	10
Uniform (90 degree) Haircut	
• Hands sanitized/area cleaned/tools labeled	10
• Assemble tools and prepare station	10
• Hair fully wet down	10
• Hair fully sectioned	10
• Create 4 section parting drop hairline guide	10
• Establish the design length around the back perimeter	10
• Establish the design length around the front perimeter	10
• Establish interior guide at the top of the head	10
• Continue cutting guideline to front hairline from established Interior guide at the top of the head	10
• Continue cutting guideline from crown to nap from established Interior guide at the top of the head	10
• Use vertical partings to blend top guide to design line	10
• Maintain constant 90 degree elevation throughout the procedure	20
• Follow traveling guide to maintain uniformly layered lengths	20
• Perform a cross check of procedure for accuracy	10
• Check perimeter guideline and finish necessary	10
• Finished cut is uniformly blended	10
• Blow dry hair to frame face	10
• Clean and organize station	10
ORAL EXAM	
• Introduction Skills – ex. Firm handshake, eye contact, introduce themselves	15
• Assess situation – ex. Determine clients complaint, ask follow up questions regarding issue	15
• Problem solve solutions & offer them to client, come up with effective strategies to resolve issues	15
• Gather personal information – checked clients phone/email	15
• Interpersonal skills – body language is appropriate for the situation, student smiled, appeared friendly	10
• Appearance – proper hygiene is followed, proper attire, hair and makeup appropriate	15

2018 KANSAS STATE CHAMPIONSHIPS (KSC) CONTEST UPDATE



- Concluding conversation – rebooking next appointment if appropriate, retail mentioned, smiled and said goodbye appropriately 15

WRITTEN TEST

100

TOTAL POSSIBLE POINTS 1,000