



Souken Dress Code

Mito City Board of Education



There are strict dress code guidelines for any meeting associated with Souken

- **This includes:**
 - **The Bi-Monthly Souken Meetings**
 - **Observations**
 - **Summer Training**

Unlike our teachers, employed by the prefecture, we are employed by city hall, which is more strict.

This is proper attire



Crisp white dress shirts and modest ties.

High quality accessories.

Dark charcoal gray or navy blue two- or three-piece suits.

Only black oxfords or derbys.



Collared dress shirts or blouses.

Dark and classic suits.

Skirts not shorter than two fingers above the knee.

Black or neutral hosiery.

Closed-toe dress shoes, such as pumps.



Dark Conservative colors White Shirts



Unacceptable Attire





Cool Biz

From May to October a style of dress called “Cool Biz” is acceptable

It is not required to wear a necktie or jacket

However there are a few rules

Acceptable Cool Biz Attire



Unacceptable: Polo Shirts



Unacceptable: Shorts



Acceptable Cool Biz Attire



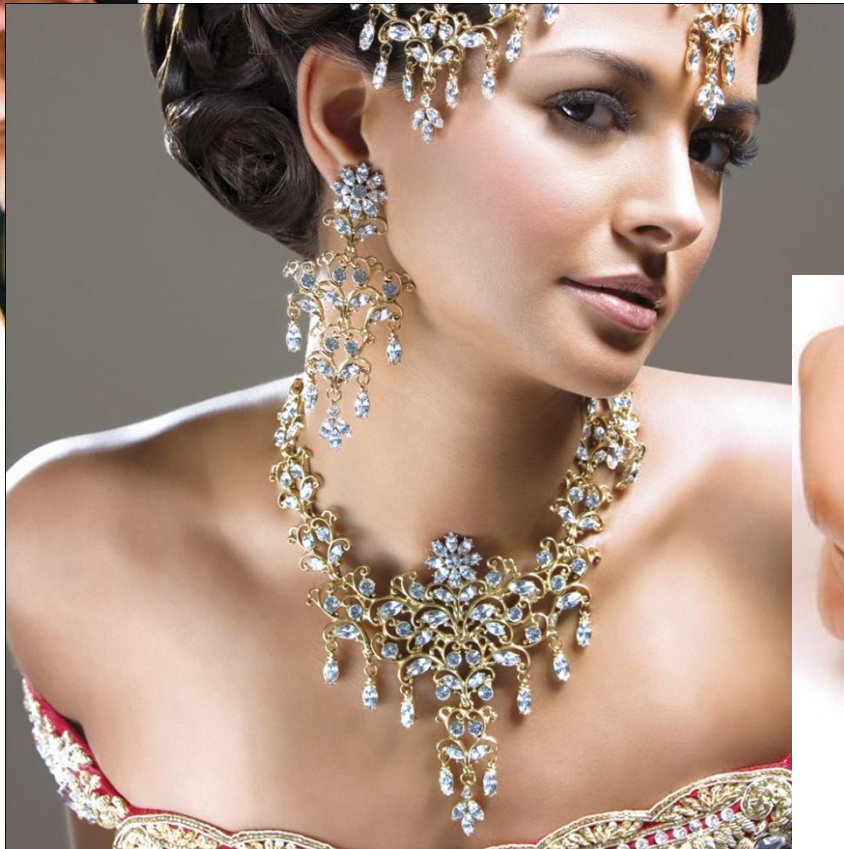
Acceptable Cool Biz Attire



Unacceptable Attire: Sandals, low neckline, sleeveless



Unacceptable Attire: Earrings, jewelry & Nail polish



Sandals and open toe shoes are unacceptable



Facial Hair is forbidden for men while at Souken

Any of us with facial hair must shave immediately
We have no wiggle room on this, it's an order from the city .



The 2015 New AET's.

A prime example of getting it right

