

PANGBOURNE MAGAZINE

ISSUE 167

MARCH/APRIL 2022



Warmingham

www.warmingham.com

Opening *new doors for you*



Having celebrated successive record breaking years in 2016, 2017, 2018, 2019, and 2020, we've done it again in 2021! Please join us to realise your property aspirations!

Warmingham & Co – Your leading independent property consultancy.... Having been established for over 35 years, we don't rest on our laurels; Leading by the front, achieving the very best for our clients. For a 6th consecutive year, 2021 has seen Warmingham & Co, out-sell and out-let all of our competitors within our area of coverage*, as recorded by Rightmove. Accordingly, you can be assured of a professional and thorough approach from our highly qualified and experienced, personable staff, who both understand the current marketplace, and yield extensive local knowledge. Offering our clients the most effective, cohesive and progressive marketing package tailor-made to their own individual requirements, locally, nationally, and internationally, 7 days a week, we are here to make your next move both seamless, and the right one for you.

* OX11 0, OX11 9, RG18 9, RG18 0, OX14 4, OX49 5, RG9 4, RG9 5, OX10 6, OX10 0, OX10 7, OX10 8, OX10 9, RG8 9, RG8 7, RG8 8, RG8 0, RG20 6, RG20 7, OX49 5, RG7 5, RG7 6, RG4 9.

Sales & Valuations

T 01491 874144

E sales@warmingham.com

Call us **7 Days A Week** to arrange a Free Valuation or Viewing

Office Opening Hours: **Monday - Saturday: 08:30 - 18:30 & Sunday: 10:00 - 16:00**

Website Opening Hours: **24 Hours A Day - 7 Days A Week - 365 Days A Year**

Lettings & Valuations

T 01491 875011

E lettings@warmingham.com



Bob
Warmingham



Tonia
Sheldon



Duncan
Kent



Karen
Spiers



Laura
Rosi



Paul
O'Loughlin



Louise
Pasker



George
Brack



Naomi
O'Loughlin



Arun
Readings



Sue
Warmingham

CONTENTS

Local News	5
What's On	8
Church News	12
Local Organisations	19
Education	37
Pangbourne Place-Names	46
Environmental News	50
Council News	55
Useful Numbers	58
Classified Ads	59

THE PANGBOURNE MAGAZINE

Production/Advertising/Finance:
Herald Graphics – 0118 9311488

Submission of articles* and adverts:
pangbourne@heraldgraphics.co.uk
*(*receipt of an article is not a guarantee of inclusion)*

Deadline for inclusion in the
March/April Magazine:
Friday, 8th April 2022
(for distribution at the end of the month)

Distribution: Lucy Bromage – 07747 056193

Whilst every effort is made to ensure the accuracy of information printed in the Pangbourne Magazine, the Editor and publishers cannot accept any responsibility for the consequences of any errors that may occur. The opinions expressed in this magazine are those of the contributors and are not necessarily those of the Editor or of the Committee. Articles in the Pangbourne Magazine, or the information contained in them, may not be used or reproduced by other publications without the express permission of the Magazine Committee. Whilst care is taken to establish that our advertisers are bona fide, readers are advised to take precautions before entering into any agreement.

Front cover picture courtesy of:
Ian Crimp

IF YOU WOULD LIKE TO SUBMIT A PHOTOGRAPH FOR THE PANGBOURNE MAGAZINE FRONT COVER, PLEASE SEND TO PANGBOURNE@HERALDGRAPHICS.CO.UK FOR CONSIDERATION. YOUR IMAGE WOULD NEED TO BE HIGH RESOLUTION AND CONTENT SHOULD BE OF LOCAL INTEREST.



OPEN ALL DAY MOTHERING SUNDAY

27th March. Open from midday through till late evening!

We'll stay open throughout the day (no afternoon closure) to ensure we can welcome as many families as possible! Please book early to reserve your spot. We can't wait to welcome you!

*Normal Hours: Open Tuesday – Saturday.
Lunchtime 12-2pm & evening from 5.30pm*

0118 9841333 / nino@ninos-trattoria.co.uk

Nino's
TRATTORIA



Woof & Bubbles

Qualified, Professional dog grooming with style.

Nicky Viccars

Tel: 07920 131 177

Email: Nicky@woofandbubbles.co.uk

www.woofandbubbles.co.uk

RING OUT, WILD BELLS

(with apologies to Alfred Lord Tennyson)

The bells in our church, St James the Less, Pangbourne, were cast by Abraham Rudhall II in 1720, at the famous Rudhall bell foundry in Gloucester. They were hung in the tower the same year. We were planning to celebrate the 300th anniversary of this event in 2020 when along came coronavirus!

The first lockdown stopped all inside activities and we could not meet to practise or ring for Sunday Service. As a result we abandoned any plans to mark the anniversary. The easing of restrictions in the autumn allowed six of us to meet in the tower to ring for 20 minutes before Sunday Service, provided we had the inside and outside doors wide open and wore face masks. We were very gratified with all the positive comments we got from many people who were just happy to hear the bells again. We even began to consider the possibility of celebrating the 300th anniversary in 2021 when along came lockdown number two.

Bell ringing is very much a team effort and people who ring together, regularly, develop a strong sense of community and comradery. Ringing is quite a complex activity involving the physical skill of pulling on a rope, listening for the resulting "bong", making sure that it is in the right place in relation to the other bells. In addition, there is a lot of mental activity in recalling and following what we call the "blue line", our equivalent of a musical score. To keep our skills alive some of us turned to technology. Early in the pandemic some clever people created some software that allows a group of people to use computers and the internet to ring together, each sitting in their own home. Pushing buttons on a keyboard is not the same as being together pulling ropes but at least we could practice the mental side of our hobby, and it was quite good fun.

Eventually, towards the end of 2021, restrictions began to ease and we were able to start to ring again. At the start of 2022 we are almost back to normal. Again, we have been very happy to know that people are pleased to hear us on Thursday and Sunday. Once again, we are thinking of how to celebrate what will now be the 302nd anniversary of the casting of our bells. Watch this space!!

Len Palfrey – Tower Captain

SPRINGING INTO SPRING ... 5-4-3-2-1

With spring just around the corner and the end of lockdown restrictions I hope this article finds you all in good spirits.

I would like to thank all who contributed to "Sue Ryder" Duchess of Kent donations to Father and Mother Christmas and to thank once again the wonderful Denny, Zach, Caitlin and lovely team @ "Baxter's" cafe-Kitchen, Reading Road, Pangbourne who allowed us to "HO HO HO" on their wonderful terrace. Final total raised this year £870.

Transzzzzformations advert this issue is different 5-4-3-2-1 and deals at a subconscious level of Past, Present and Future.

Feedback on Jan/Feb issue was enlightening especially around the excessive placement and advertising of alcohol. Everything in moderation including moderation.

I was going to write about parties planned for future celebrations in Pangbourne but Sue Gray is checking it over and redacting stuff (just as well).

So until next time yesterday's history . . . tomorrow's a mystery . . . Enjoy Today.

*Jim Tubbs-Galley
Hypnoanalyst, Reiki master, Tree Guru, DHP*

PROGRESS REPORT ON THE LADIES!



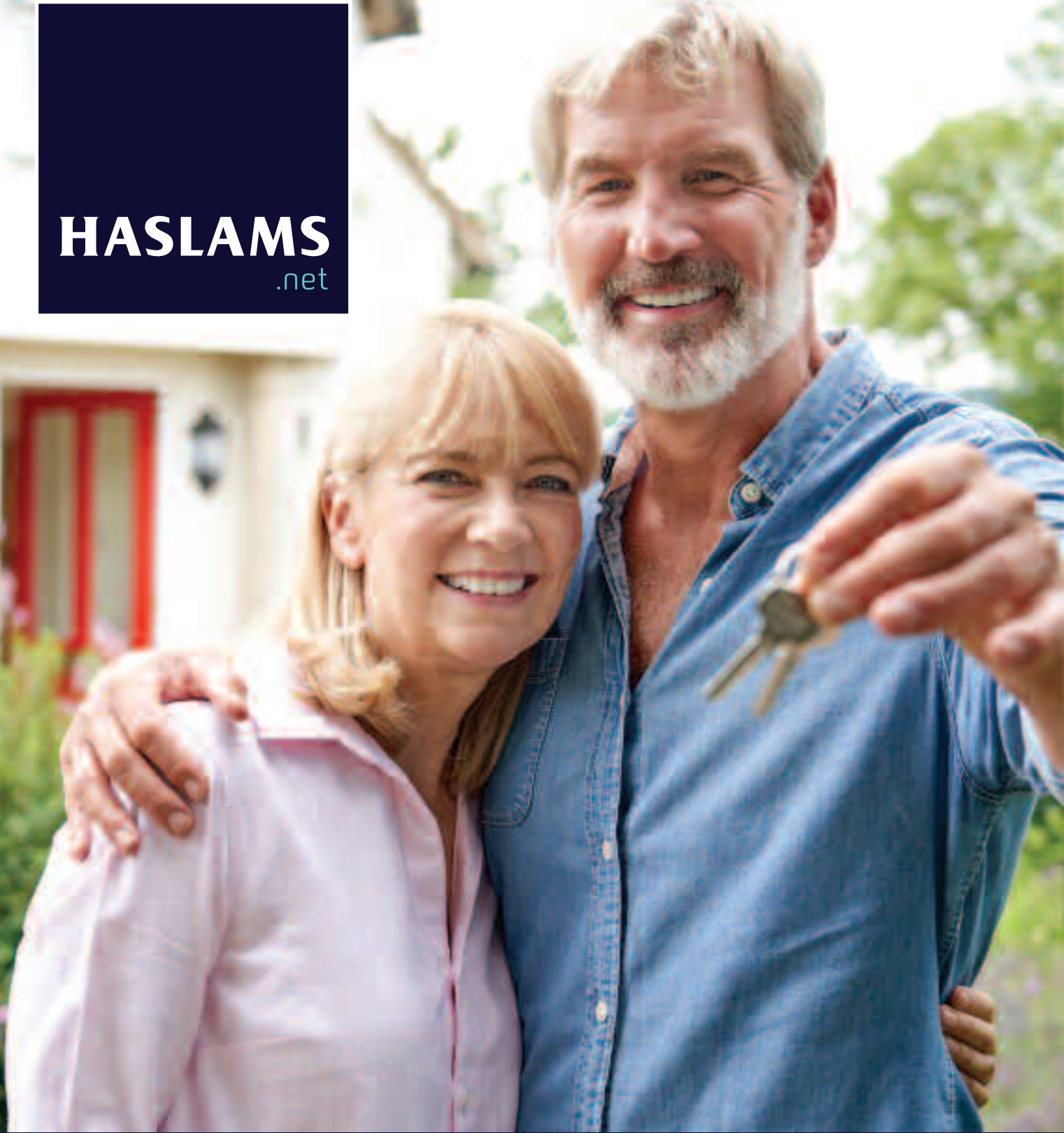
Action for Pangbourne Toilets Charitable Trust were hoping that the modernisation of the ladies toilet facilities would have been completed in December 2021, in plenty of time for an official reopening in late January. However, due to severe problems with the supply of the sanitary ware, this has not been possible and the work is not now expected to be finished until early March.

During this time the disabled facility has been made available for users, and will continue until the modernisation is complete. We currently expect the reopening to take place in late March.

Funding for the toilets has always been of great importance and APT has received a lot of support from local charitable groups, village councils and individuals. One of the major supporters has been The Good Exchange Platform, an organisation linked to the Greenham Trust. APT have put several projects on this online platform and received £5,000 in match funding for each project.

The APT trustees are delighted to have received approval for new project, reference 19397, towards funding the annual running and cleaning costs from September 2022. If you would like to make a donation on the platform, search for www.thegoodexchange.com and key in 19397 and the project will appear with information on how to make a donation. For those of you who prefer to make donations by way of a cheque, please call 07881 905 983 and we will talk you through it.

HASLAM
.net



We have 1000s of buyers waiting to move.
Book your valuation today.

Feel at home with Haslams
0118 960 1000



KEEP THE WHEELS TURNING

If you like making a real contribution to the community in and around Pangbourne please consider joining the team of volunteer drivers at Carebus Community Transport. No specific time requirement involved, just a willingness to be asked if you can drive a particular job.

Carebus relies on volunteers to drive their two minibuses, two accessible cars, or to use their own private cars for which mileage costs are reimbursed.

Volunteers take individuals to medical and other appointments, and social occasions. The minibuses are used for groups attending lunch clubs, theatres, etc, where other forms of transport are unsuitable.

If you passed your driving test prior to 1997 it is likely you will be licensed for a minibus (check for D1 on your licence). Your insurer's permission is needed to use your own vehicle, but this is usually forthcoming at no or nominal charge.

Volunteers get great satisfaction from knowing they are making a real difference to elderly, disabled, isolated and vulnerable people living in the Eastern part of West Berkshire.

0118 930 4837

www.carebuscommunitytransport.org

If you find it difficult to get out and about . . .

Please get in touch. Carebus can often assist wheelchair users, or those who are elderly, disabled, isolated, or vulnerable to get to medical or other appointments, meet up with friends etc where other forms of transport may be impractical, unsuitable, or non-existent. The Carebus minibuses and cars can accommodate people who need to travel in wheelchairs; volunteers' cars are available for passengers without such mobility issues. There is a modest mileage charge to cover fuel and insurance costs; drivers are all unpaid volunteers.

The service is available throughout the Eastern part of West Berkshire. Additionally, a regular Friday morning accessible minibus service runs from Pangbourne to Newbury and back. Pre-booking essential.

0118 930 4837

www.carebuscommunitytransport.org



HIRING NOW

JUNIOR TO CREATIVE DIRECTOR HAIR STYLISTS

- Opportunity to work alongside an award winning team in a brand new establishment
- Salary competitive with benefits
- Permanent
- Full and Part time positions available
- Pangbourne
- Must be a motivated, passionate and confident individual with an eye for detail
- Excellent customer service is essential

Email your CV along with a covering letter to recruiting@virgobeauty.co.uk

VIRGO BEAUTY
Est. 1992

PANGBOURNE VILLAGE MARKET

The market is doing well – our fruit and vegetable produce is very popular and our cakes sell well. We also sell eggs, preserves, puzzles and books, honey and plants in season.

The craft section provides jewellery, cards, pictures. We have the occasional guest producer. Fresh fish from Brixham is available every fortnight. A very good selection of fish is always on sale.

Please come and support us and enjoy our produce while you have a cup of tea, a snack and some social time.

WHAT'S ON



Everyone Welcome

Looking for friendship in and around Pangbourne

Come along to one of our fun events

<p>Mexican Train dominoes Weds 2 March, 7.30pm</p> <p>Colourbrain board game Weds 6 April, 7.30pm</p> <p>Travel the World.. ..in 80 questions Weds 4 May, 7.30pm</p>	<p>Elephant Hotel Church Road Pangbourne RG8 7AR.</p> <p>Members £2 Guests £3</p>
---	--

Sounds interesting?...contact Richard:
0118 945 5831 readingdistrict@oddfellows.co.uk



f Reading Oddfellows
www.oddfellows.co.uk

The Oddfellows is the trading name of The Independent Order of Odd Fellows Manchester Unity Friendly Society Limited, Incorporated and registered in England and Wales No. 223F. Registered Office Oddfellows House, 184-186 Deansgate, Manchester M3 3WB. Ref 1699



IN RECOGNITION OF HER MAJESTY'S PLATINUM JUBILEE

WHY NOT TAKE PART IN MAKING

PANGBOURNE'S ROYAL MILE OF BUNTING

THE PLATINUM BUNTING CLUB MEETS FORTNIGHTLY (FROM 6TH FEB) ON SUNDAY'S 5-7PM IN THE ADVENTURE DOLPHIN CENTRE TO MAKE BUNTING TO DECORATE AROUND THE VILLAGE FOR THE JUBILEE CELEBRATIONS.

WE AIM TO MAKE FABULOUS BUNTING WHILST HAVING A GOOD SOCIAL TIME. EVEN IF YOU CAN'T MAKE THE FUN SESSIONS YOU CAN STILL GET INVOLVED.

For more information - contact Angela on cullinanam@aol.com





JOIN · RENEW · UPGRADE

Pay+Play · Members · Member PLUS



Google play



App Store

OPEN THE APP

CLICK 

AND SCAN THIS QR CODE



CONNECT TO

Bradfield Tennis Centre



SEARCH FOR BRADFIELD TENNIS CENTRE WITH THE PLAYER





@BradfieldTennis

0118 964 4603 // 0118 964 4566



tennisinfo@bradfieldcollege.org.uk

THE GAP FESTIVAL RETURNS THIS JUNE IN A CELEBRATION OF OUR COMMUNITIES

As the days start to grow longer we all start to look forward to what the warmer months will bring – fun-filled days, summer events and celebrations of coming together again.

This year's GAP Festival will turn those musings into reality for us all this June, turning Goring and Streatley into a colourful, vibrant and festive atmosphere across its streets and through the doors of its local venues. This year's festival will be a chance to come together again and celebrate all that makes our local communities so special.

With a 4-day Jubilee Bank Holiday to kick it all off, you'll have severe FOMO (Fear Of Missing Out!) if you've not got the Festival dates in your diary yet. The 2nd – 12th June, in case you are now reaching for your calendar!

The full 10-day programme of music, theatre, comedy, talks, arts and family events for all ages is almost there! And you can be first to hear when it's released this spring by heading over to www.thegapfestival.org and subscribing to our e-newsletter.

In the meantime, here's the latest from the team of volunteers working hard to bring this exciting celebration together for each and every one of us to enjoy.



Photo: Bernard Novell



Photo: Chris Rickards

RECREATING THE LONGEST JUBILEE STREET PARTY IN BRITAIN

On Sunday 5 June, we are planning another amazing Jubilee street party to celebrate this historic occasion. We hope that it will be every bit as joyful and memorable as the one in 2012 during our Diamond Jubilee celebrations, which was widely reported as the longest Jubilee street party in Britain, as 4,000 people joined a continuous 1km line of tables stretching from Goring railway bridge to Streatley traffic lights.

The aim is that this spectacular event will be fully inclusive and free to attend as it was in 2012. So the festival team is

calling out to any local businesses, community funds or individuals who might be able to support the event, to get in touch, so that we can recreate this magical occasion. Find out more details here: www.thegapfestival.org

CHILDREN'S FILM FESTIVAL ENTRIES EXTENDED TO MAKE THE MOST OF HALF-TERM

As half term approaches, we announce an extension to registrations for this year's Children's Film Festival. A smartphone is all that's needed to get started. All school ages can enter their own simple short-film to be part of the red-carpet premiere screening taking place on Sunday 12 June. So if you have some avid TikTokers, media studies students or simply want to inspire the young ones in your household, sign up at www.thegapfestival.org and join those already registered in shining a spotlight on the local creative young talent we have living locally. Who knows perhaps the Oscar winners of the future are right under our noses!



UPCYCLE YOUR OLD TEXTILES INTO A 'PLAYFUL' FESTIVAL INSTALLATION

Goring Textile Group are looking to take the festival decorations to a whole new level but they can't do that without your help! If you have any old clothes or textiles in bold shades of pink, red, teal, orange and yellow, please start donating them from now over the weeks ahead. These will be upcycled into a 'Playful' installation to bring an extra special celebratory vibe to some areas of the villages. The team kindly request fabrics are cotton or polycotton and no smaller than an adult sized shirt, so bedspreads, sheets, tablecloths, fabric off-cuts or shirts are perfect! Please contact help@gapfestival.org subject "fabric donation".

A CHANCE FOR YOU TO BE PART OF SOMETHING SPECIAL

We want to hear from you! Whether you might be able to help with our event planning, marshalling or bars during the festival itself. We also want to hear from any local groups and businesses that would like to support, sponsor or get involved in the programme in some way. Find out how at www.thegapfestival.org/support-us.

RESOLUTIONS - TRY HYPNOSIS » » » WORK - TRY HYPNOSIS » » » REST - TRY

HAPPINESS - TRY HYPNOSIS » » » GOOD HEALTH - TRY HYPNOSIS » » » WEALTH CREATION - TRY HYPNOSIS » » »

HYPNOSIS » » » PLAY - TRY HYPNOSIS » » » PHYSICAL - TRY HYPNOSIS » » » MENTAL - TRY HYPNOSIS » » »

Trans4Formations

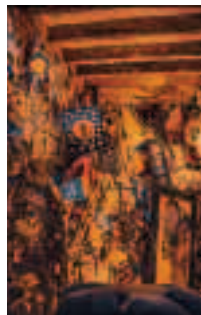
PAST - PRESENT - FUTURE

* THUNDERBIRDS ARE GO - 2065 & 2067



5

* LEGENDARY CHOCOLATE BAR - 1982



4

* MANFRED MANN - 1964



3

* 54321 - MANAGING ANXIETIES . . . NOW



2 . .



1 .

HYPNOSIS CAN SORT IT

07881 878 545

EMOTIONAL - TRY HYPNOSIS » » » WEIGHT CONTROL - TRY HYPNOSIS » » »

THAI | NOW

TRULY TREMENDOUS THAI FOOD



**DELICIOUS AUTHENTIC THAI FOOD
COOKED BY TRASSA AND JIRAPORN**

DELIVERING TO

**Purley and Pangbourne
Upper Basildon**

Whitchurch on Thames

(please pay the £ 1.20 return toll to the driver)

SOME OF OUR RECENT REVIEWS:

“
Always love my
Thai Now meals.
Flawless

“
...first time ordering
and won't be the
last! Excellent
quality ingredients
done to perfection

“
Excellent and
authentic Thai food.
Always impressed

ORDER AT THAI-NOW.COM OR 0118 945 1111

THAI NOW LTD • 936 OXFORD ROAD • READING • RG30 6TJ
(PARADE OF SHOPS JUST PAST WAITROSE)



Lent and Easter at St Bernadette's

Pancakes on **Sunday 27 February**

After the 9:30 Mass

Ash Wednesday 2 March (see website)

Children's Mass Sun 13 March at 9:30 am

Way of the Cross "for the Intrepid"

Sun 13 March – see website for details

Friday Stations & Lunch @ 12 noon

Fri 18 March & Fri 1 April: Stations of the Cross followed by a bread & soup lunch.

Palm Sunday 10th April

Mass 9:30am (usual Sunday Mass time)

GOOD FRIDAY 15th April

Children's Way of the Cross 10 am

Veneration of the Cross 3 pm

Holy Saturday 16th April

Easter Vigil Mass 8:30 pm

EASTER SUNDAY 17th April

Mass at 9:30 am

All welcome on our Lenten & Easter journey!
Horseshoe Road, Pangbourne, 0118-971-5350
Please see the parish website for more events.

www.douaiparish.org.uk

CHARTERED FINANCIAL PLANNERS BASED IN BERKSHIRE

Have you reviewed your financial goals?

The beginning of the year is an ideal time to review your goals, to think about what you really want and what steps you can take towards achieving them.

Some top tips:

- 1 Breakdown your goals into headings such as family, property, lifestyle, education, and retirement.
- 2 Include why you want to achieve each goal. This is important.
- 3 Note what steps you need to take to achieve each one.
- 4 If saving tax is one of your objectives, review this in good time before the tax year end on 5th April.
- 5 If it's not becoming clear, engage help. This is where our Chartered Financial Planners come in. They will work with you to establish and prioritise your objectives and build a financial plan to guide you.



www.essential-wealth.co.uk
01488 669840

enquiries@essential-wealth.co.uk
1-2 Great Farm Barns, West Woodhay, Newbury, Berkshire RG20 0BP
Essential Wealth Management and Advice Ltd is an appointed representative of The Openwork Partnership, a trading style of Openwork Limited which is authorised and regulated by the Financial Conduct Authority.



THE PARISH OF PANGBOURNE WITH TIDMARSH AND SULHAM



A Christian presence in every community in 2022

CHURCH SERVICES

St James | St Laurence | St Nicholas

For up-to-date details of all worship visit our website: www.pangbournechurches.org/services

MARCH

Sunday 6th

10 am	Holy Communion	St James
11.15am	Holy Communion	St Laurence

Sunday 13th

7.45am	Holy Communion (BCP)	St James
10am	All Together Worship	St Laurence

Sunday 20th

10am	Holy Communion	St James
11.15am	Family Worship	St Nicholas

Mothering Sunday 27th

7.45am	Holy Communion (BCP)	St James
10am	Holy Communion	St James

APRIL

Sunday 3rd

10 am	Holy Communion	St James
11.15am	Holy Communion	St Laurence

Palm Sunday 10th

7.45am	Holy Communion (BCP)	St James
10am	All Together Worship	St Nicholas

[See details of Holy Week and Easter services overleaf](#)

Easter Sunday 17th

5.30am	Daybreak Service	Rectory Garden
10am	Easter Celebration	St James
11.15am	Easter Celebration	St Laurence
11.15am	Family Worship	St Nicholas

Sunday 24th

7.45am	Holy Communion (BCP)	St James
10am	Holy Communion	St James

Midweek Holy Communion

10am every Wednesday morning in St James followed by coffee and chat. All welcome



Letter from Revd Mark Hopkins, Priest-in-Charge

Dear Friends,

This year Easter is comparatively late (17th April) which means we have a very early rise for the Easter Dawn service. But before that is Lent, with Pancake Day (Shrove Tuesday) on 1st March and Ash Wednesday on 2nd March. Lent is a time of "sober reflection" when we think about faults and mistakes in our lives, what we want to change about ourselves, and what we want to change or give up (something longer lasting than just 40 days of chocolate!). March this year will be especially sombre as we think, 2 years on from the start of the pandemic and hopefully near to its end, of all the losses we have suffered, the sacrifices which have been made, and the impact of the effects of covid on our mental health and livelihoods.

For me as a Christian, Easter is a time of death and resurrection. In the death of Christ on the cross, it seemed all was lost, but his victory over death we celebrate just three days later on Easter Sunday. It is a reminder that there is always hope to be found in the bleakest of circumstances.

This Lent and Easter the church will be open for lent lunches on Wednesdays and a special exhibition towards the end of March, in addition to our regular events such as Noah's Ark on Fridays and our Sunday services.

Best wishes

Rev Mark

www.pangbournechurches.org





THE BEAUTY BOX

treatments

Beauty Box	+	WINTER FACIAL ▼	+	Beauty Box	+		+	Beauty Box
------------	---	---------------------------	---	------------	---	--	---	------------

Beauty Box	+		+	Beauty Box	+	GEL MANICURE ▼	+	Beauty Box
------------	---	--	---	------------	---	--------------------------	---	------------

Beauty Box	+	WAXING ▼	+	Beauty Box	+		+	Beauty Box
------------	---	--------------------	---	------------	---	--	---	------------

Beauty Box	+		+	Beauty Box	+	LASH EXTENSIONS ▼	+	Beauty Box
------------	---	---	---	------------	---	-----------------------------	---	------------

www.beautyboxpangbourne.co.uk
01189842299

Berkshire's Exclusive Skin Health & Laser Clinic



SKIN HEALTH

Radiant skin, the natural way ...

... can be yours with our non-surgical face & body contouring & lifting treatments. Our bespoke skin rejuvenation programmes are uniquely developed using science & technology from around the world.

As a specialist laser and skin clinic, we are here to help you.

- Non-surgical face, neck & body contouring
- Acne & rosacea specialists
- Pain-free laser hair removal
- Wrinkle & skin remodeling
- Cellulite/fat reduction
- Emsella for incontinence
- Non-surgical blepharoplasty
- Emsculpt body sculpting



Andresa Aesthetics Exclusive Skin Health and Laser Clinic
 Tel: 01635 800183 | info@andresa.co.uk | www.andresa.co.uk
 Lower Wasing Barn, Wasing Lane, Near Woolhampton RG7 4LY



Chiropractic the McTimoney Way

for people and small animals

Multi-disciplinary clinic offering integrated health care in a friendly, relaxed setting
Chiropody & Podiatry
Sports & Remedial Massage
Acupuncture & Homeopathy

Suitable for all ages. Free spine check available. Evening and weekend appointments available.

For Health Chiropractic

0118 984 3473

Unit 2, The Old Mill
 61 Reading Road
 Pangbourne
 RG8 7HY

www.forhealthchiropractic.co.uk



Release your body's true potential

KJ Cosmetics BEAUTY CLINIC

Laser Hair Removal & Skin Rejuvenation

Semi-Permanent Eyebrows | Eyeliner

Lash Extensions Lash Lift & Tint

Facials Dermaplaning Skin Peels

Massage Manicure



Free Parking | Free Consultation
 Weekend & Evening Appointments

www.kjcosmetics.co.uk
 info@kjcosmetics.co.uk
 0118-974-4071

Hewley Wood Farm
 Bedford, MK7 4DT

Louise Amanda Sheppard (BA/Dip)

EMDR Specialist Hypnotherapist

*Mobile Therapist covering
Oxfordshire and Berkshire*

EMDR Therapy

(Eye Movement Desensitisation Reprocessing)

- Trauma • Victims of Rape • Assault
- Combat • Drug Addiction • Bereavement
- Fears/Phobias • Anxiety • Depression

Hypnotherapy

- Pain • Anxiety • Fears • Phobias
- Smoking • Weight Management

**Age Regression/Past Life Regression
Gestalt Therapy/Dreamwork
Parts Therapy**

Telephone: 07842 262583
Email : lasheppard61@gmail.com



HILLFIELDS FARM

Award winning dry hire wedding venue
in Lower Basildon.

Multi day hire, ceremony license,
accommodation onsite and no corkage.

For further information or to arrange a viewing
please contact us on:

Info@hillfieldsfarm.co.uk

Tel: 07738 579773

www.hillfieldsfarm.co.uk

**Hillfields Farm, Park Wall Lane, Lower Basildon,
Berkshire, RG8 9PE**



Cosmetic & Laser Skin Clinic



- laser hair removal
- lines / wrinkles
- crows feet
- lip enhancement
- microdermabrasion
- skin tightening
- brown spots
- skin peels
- mole, cyst, skin tag
- tattoo removal
- facial / leg veins
- Vaser - fat removal
- eye lid surgery
- dermaroller
- underarm sweating
- acne

Professional, Caring and Confidential

Treatments for Men and Women

The
CHILTERN *medical clinic*

Dr N. Munnelly Medical Director



60 Broad Street • Reading • RG1 2AF
1 Thames Court • High Street • Goring • RG8 9AQ

HIGHLY SKILLED DOCTORS RENOWNED FOR EXCELLENCE

Call 01491 873 989 or 0118 958 2016

www.chilternmedical.co.uk



JOIN NOW!

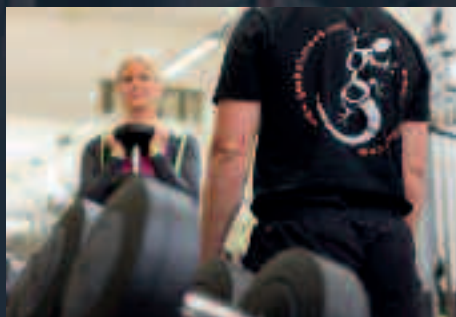
**MONTHLY AND ANNUAL MEMBERSHIP DEALS AVAILABLE
ALL ROUNDER - AQUA PLUS - PURE FITNESS - PURE AQUA**

BRADFIELD BENEFITS



- ✔ No Joining Fee
- 📅 Flexible Membership
- 👤 1-2-1 Personal Training
- 👥 Fitness Classes for All Levels
- 👨‍👩‍👧 Family Friendly
- 🏞️ Stunning Location
- ❤️ Cardio & Resistance Gym
- 🏊 25m Indoor Swimming Pool

* No contract or joining fee



BRADFIELD COLLEGE SPORTS COMPLEX

email: frontdesk@bradfieldcollege.org.uk tel: 0118 964 4600



www.bradfieldsportscomplex.co.uk



Pangbourne Club

NEW MEMBERS WELCOME



Facilities

- Air Con throughout
- 3 full size snooker tables
- Pool Table
- 2, 2mx2m projector screens and large TV's
- BT Sports
- Conference Facilities
- Function Room for hire with kitchen facilities and licenced bar

Entertainment

- Live regular entertainment
- Bingo every Thursday evening
- Regular exercise classes
- Weekly raffles

LOWEST DRINK PRICES IN THE VILLAGE



Teams

- Cribs teams
- Snooker Teams
- Table Tennis



Objectives

PWMC is run as a non-profit making organisation by its members through an elected committee, which provides a social facility for residents of Pangbourne, the surrounding area and for people working in the village.

Pangbourne Club

Rosewood Hall, Whitchurch Rd, Pangbourne, Reading, RG8 7BS

t: 0118 9842885

e: info@pangbourneclub.co.uk

Visit us on Facebook

www.pangbourneclub.co.uk

PANGBOURNE ALLOTMENTS



The decorating party: Kat Syfret, John Rowlands and Jayne Davidson



Harvested kalettes

It seems a long time since Christmas, but the Allotments' tree at the back of St James Church – decorated on the theme of angels – was a credit to the angel-makers and decorators alike. Thanks to all involved.

Reports about the benefits of gardening/allotments are coming in thick and fast. Early results from a University of Sussex study led by Dr Beth Nicholls show that the average allotment holder in their sample (from the Brighton/Hove area) harvested 74 kg in a season – worth about £380 in the shops, with some raising food worth more than £2,000, by growing valuable crops like raspberries and gooseberries. There are about 300,000 allotments in England, so the value of crops that could be grown is staggering. The UK imports approximately £8 billion of fruit and veg, so anything we can do to reduce this would be a valuable contribution to helping the planet – quite apart from the mental and physical health benefits it brings, as well as a huge saving on the household budget.

Update on kalettes (a cross between sprouts and kale) from Richard Caesar: "I found them easy to grow, and evenly, but they did need staking as they are top-heavy. Compared to brussels, which I find attract pests that bore into the sprout, kalettes don't seem to have any such problems. They are easy to pick, sliced off with my penknife".

The annual rabbit problem has reared its ugly head. As can be seen from their 'gifts', there must be rather more than a few of them!

At the time of writing, a date has not been fixed for the Pangbourne Allotments AGM, but is likely to be at the end of April. Notice will be sent out as soon as possible, and it is hope that it will be well-attended.

As always, if you want to join the green revolution and live in Pangbourne, please contact pangbourneasstclerk@gmail.com to be put on the (short) waiting list, or phone Jo Power on 0118 984 5898.



PURLEY HORTICULTURAL SOCIETY

TRADING

Store is now open on Saturdays only from 10-11am. It will also be open on a Wednesday evening from 5pm until 6.30pm April to June. Membership subscriptions for 2022 are now due and can be paid at the Store or at any of our evening meetings.

TALK

Wednesday, March 16th talk by Timothy Walker on the subtle art and exact science of pruning. Timothy worked from 1986 to 2014 at the Oxford Botanic Garden and Harcourt Arboretum as general

foreman and then director and has won medals at Chelsea Flower Show. Since 1986 he has been giving lectures to gardening clubs and horticultural societies. From 2014 he has been a stipendiary plant lecturer in Plant Sciences at Somerville College, Oxford and similar positions at Pembroke College and Hertford College. The talk will take place in Purley Memorial Hall. Doors open at 7.30pm for 8pm start.

SPRING SHOW

Saturday, April 2nd– Spring Show in Purley Memorial Hall. Open to the public from 2.30-4pm.

For more details check our website.

Marion Dabbs





PANGBOURNE HERITAGE GROUP

In the last issue but one we wrote about the demise of Pangbourne Fire Service, which aroused a lot of interest. One of our members, Trish Simpson went to the actual closing ceremony and took photographs of the event which she kindly passed on to us. The future of the building in Horseshoe Road is uncertain, but it has been put up for sale.

We looked back in the last issue to the early 1900's, and a description of the village in the eyes of a child, Nellie Hendy. This year we have been able to plan for some more occasions for the group to get together, as well as joining in events which are due to take place in the coming months.

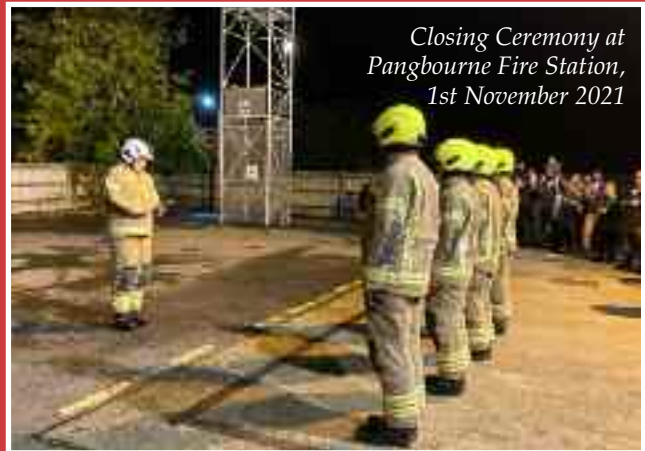
On 8 March Jane and I have been invited to talk to the Pangbourne WI about the heritage group, and in particular the research that went into the publication of our book about the village shops.

On 30 March at 2pm we have arranged a talk to be given by David Cliffe on the *Sixty Industries of Reading* (postponed from two years ago!). We are using the smaller section of the Village Hall on this occasion as we need to be able to darken the room to use a projector in daytime. Some of you will remember coming to David's talk on the Cinemas of Reading when we learnt so much about the development of film making and projection, not just the golden age of cinema itself. The talk is free to members and everyone is welcome, but we ask of a small donation of £3 from non members to boost our funds.

The next contribution from the group to Pangbourne Magazine will be devoted to memories of the time between Queen Elizabeth's Accession to the throne and the Coronation, in response to the Parish Council's request for ways in which to celebrate the Platinum Jubilee at the beginning of June. Jane is already looking at our archive and has found some original material which relates directly to Pangbourne. We also plan to ask village people who have memories of Pangbourne in that era to come and talk to us in the library. date and time to be arranged.

We hope to know more about this year's fete in the near future so we can welcome visitors to our gazebo once again, after a gap of two years. it is a really good way to find new sources of information and to spread the word about the group. We are grateful to the team at Pangbourne magazine for continuing to print our articles as it is the most important way we can communicate with the wider public. it was vital during the lockdown months to be able to make our voice heard. Many thanks.

Lesley Crimp and Jane Rawlins



*Closing Ceremony at
Pangbourne Fire Station,
1st November 2021*



LOCAL ORGANISATIONS

RNLI



Yet again, the fundraising efforts of the RNLI in Pangbourne were struck by the Pandemic last October. Our scheduled Race Night in October had to be cancelled at the last minute, once more denying our great charity much needed funds. However, determined to do something, however small, we successfully raised some monies, holding a coffee morning at The Art Cafe in Whitchurch. (All Covid rules were diligently adhered to!) We had scrumptious cakes and savouries on sale to enjoy with the pots of tea and coffee that kept Andy, our chairman, busy preparing! Also the pots of homemade marmalade and Piccalilli sold out very quickly! We shall be holding more of these mornings in the future so look out for the dates and come and join us for a “cuppa and a bit of cake”!

The good news is that we have set another date for a Race Night! So please set aside Friday 22nd April, 7.30pm, for a great night’s entertainment at the Village Hall! Tickets are £10 which includes a Fish ‘n’ Chips supper (cutlery and condiments included) with a Wine, Beer and Soft Drinks bar, Raffle and RNLI Souvenirs stall. (Grab a bargain with sale price Christmas Cards!). Tickets will be available from any committee member, Garlands shop in the village or for more information, phone or email the numbers below.

We shall also be holding our street collection this year, with a souvenir stall, on Saturday 7th May. Please do come along and support us. Our Autumn event is yet to be finalised but details will be put in this magazine soon as!



Also, our collection boxes are well distributed throughout the village and they are crying out to have your spare cash put in them!

As some of you may know, Pangbourne branch is affiliated to Weymouth Lifeboat Station and I was lucky to speak to them recently about how things have been with them! As you can imagine, life has been pretty difficult down in Dorset but saving lives has to “carry on regardless “! In 2021, they had, in total, 81 shouts on both the All-weather and Inshore boats, the furthest being 12 miles out, Southwest near Portland Bill and the furthest East near St Normans Head. They saved six lives, of which four were paddle boarders! Hygiene has been one of their biggest challenges with EVERYTHING needing sanitising regularly as well as mask wearing constantly! The paging system of rounding up the crews for a shout, as you can see on documentaries like “Saving Lives at Sea” has also had to be changed. After the initial contact to the station, the paging button isn’t pushed. Instead, the Coxswain – still Andy Sargent who has been at Weymouth for more than 20 years – has to phone the volunteers to find a minimum crew to attend thereby safeguarding them from any possible infection (although they are constantly testing!) To date they have had one rescue in 2022, being a lady kitesurfer who had been separated from her kite! Both surfer and kite were taken aboard the rescue boat and returned safely to Ferry Bridge from where she had set off! They had one amusing tale for us: a man bought a life raft off ebay and took it to the beach. He was blown out to sea and then had to be rescued by, yes – you’ve guessed! The RNLI! So this is the worthy cause for which we fundraise and I’m sure you can understand why!

Finally, on a light note, a moment of amusement. One of our members was asked: “Mmmm! Pangbourne RNLI? Where do you practice your rescues?” I’ll leave the answer/response to you!

Thank you to all our supporters and we look forward to seeing you at our future events where we hope we can part you from some of your money!

Stay safe all!

Denise Saunders

saunders939@btinternet.com, 07837 606529

TVS Thames Vale Singers

Come and join us to

'MAKE MUSIC'

We are your local Purley on Thames choir
and we are looking for new members

We don't hold auditions.
Just get in contact, come to one of our practice nights and take it from there.
We will meet on a Tuesday evening from 7.30pm to 9.30pm in Purley Memorial Hall
Have a look at our website to see more about us and what we have done over the past 60 years:
www.thamesvalesingers.org.uk

Contacts
Judy Rayers: 0118 942 1880
or
Email: mail@thamesvalesingers.org.uk

Some of the music we have made

West Side Story | Handel's Messiah | Schaefer's Christmas Story | Gipsy & Dolls
Simon & Garfunkel | Coplan Noth and the Floating Zoo | Card Concerts
Mozart Requiem | Rock & Roll | Madrigals | Ship Boat | Other
Bach's Magnificat | The Phantom of the Opera | Other
Bach's Magnificat | The Phantom of the Opera | Other
The Beatles | West Side Story
Originals in the Underworld
Opera Obituaries

LOCAL ORGANISATIONS

TENNIS IN PANGBOURNE – GET READY FOR SPRING!

Pangbourne Tennis Club has been busy over the winter with social tennis, coaching sessions and league matches. Looking forward to warmer weather and lighter evenings, we are keen to make sure that anyone who would like to play tennis, at any level, can take part in club activities this spring and summer.

The club has a full programme planned for the coming season. We are a friendly club and you will get a warm welcome, whether you fancy giving tennis a go for the first time, haven't played for a while and would like to get back on court, are a recreational player or would like to play competitive tennis in league matches. Our activities cover the whole range and we want to encourage as many people as possible – of all ages, shapes, sizes and fitness levels – to enjoy the wonderful facilities we have at the club by getting out on court.

The club is located between the river and the railway on the Recreation Ground and we share the club house with Pangbourne Bowls Club.

Membership runs from 1st April. Benefits include free access to the club courts, discounted rates for drill and training sessions, fun tournaments, a range of team matches and a ballot for Wimbledon tickets.

The subscription for adults is just £60 per year. Junior membership is £25 for the first child, with reductions for siblings. We also offer a family membership for £130, which covers up to two adults and all the children in the family.

*Join or renew online at www.pangbournetennis.org
or email info@pangbournetennis.org
for more information*

TENNIS FOR ADULTS

To kick start your season, sign up for three weeks of coaching on Tuesdays from 29th March to the 12th April. There will be two, one hour sessions each week starting at 5.30pm and 6.30pm.

After the Easter break, starting on Tuesday 26th April, join up for one of the two club coaching sessions at 5.30pm and 6.30pm. Also on Tuesdays, the very popular Back to Tennis session is running again. If you've not been on court for many years – maybe the last time you played tennis was at school – this session is ideal to reintroduce you to tennis.

Start to Play – new this season. Are you completely new to tennis and want to learn the basics? This programme is designed to get you up and running. Run by our club coach Damian Lane who is very experienced in developing players of all standards, the five week course will get you started in a supportive environment. This course is limited to six participants, so book early!

*Book your place at www.pangbournetennis.org
or email info@pangbournetennis.org
for more information*

JUNIOR COACHING IS BACK ON FRIDAYS!

We are delighted to confirm that we will be running our outstanding programme for juniors from four years old all the way up to older teenagers. The sessions are on Friday afternoons from 4.30pm, starting on 29th April and continuing to 15th July (11 sessions over 12 weeks). Participants grouped by age and ability with the younger children playing at 4.30pm. This year, the session at 6.45pm will be for older teenagers who have had coaching in the past and would like to continue to develop their skills.

Annual membership for juniors is £25 for the first child in the family and the fee for the coaching course of 11 weeks is £55. We offer discounts on all the fees for siblings within the family. Juniors who are part of a family membership only pay the coaching fee.

Parents who would like to play tennis whilst their children take part in the coaching are invited to use the adjacent courts where club members will be on hand to knock around and provide some guidance. All abilities welcome!

NEW FOR 2022 – JUNIOR TASTER SESSIONS

New for 2022, we will be running taster sessions prior to the start of the coaching programme. These will be held on Friday 1st and 8th of April to kick the season off. Children new to tennis or new to the area are very welcome to come along to see if they want to join the full course, whilst past participants are invited to attend and get ready for their new season. Taster sessions are £5, no membership required.

*Register for the taster sessions and/or
the main coaching programme at
www.pangbournetennis.org/junior-coaching*

SUMMER CAMP, AUGUST 2022 – SAVE THE DATE!

New for 2022, we are planning to run a summer camp week commencing August 8th. Sessions will be 2 hours long over five days, likely to be 10am-12 noon (group 1) and 1pm-3pm (group 2). More information will be available on the website later in the spring.

INTERESTED IN PLAYING COMPETITIVE TENNIS?

Pangbourne enters teams in Newbury and District LTA league. We run men's, ladies and mixed teams.

Mixed matches are mainly on Monday evenings. The ladies home matches are played on Wednesday evenings and men's on Thursdays. The matches start at 6.30pm. Please do get in touch if you are interested in playing for any of the teams.

Looking forward to seeing you on the courts.

*Pangbourne Tennis
Club Committee*

pangbourne
tennisclub

LOCAL ORGANISATIONS



PANGBOURNE WI

It seems a long time ago now, but our Centenary Christmas party on 14 December 2021 was a wonderful celebration which was enjoyed by many members and their friends. We were joined by representatives from local WI groups, as well as Annette Dolphin (the newly elected Chairman of the Berkshire Federation), and Wendy England (our WI advisor). We were also delighted to welcome back several members who had moved to other areas of the country. Our President, Sue Smith, welcomed everyone to this very special event and invited Reverend Mark Hopkins to open the proceedings.

We were entertained by the Secretary of the Pangbourne Choral Society, Gloria Whittaker, accompanied by her musical husband John. Gloria is one of the many people who set up the Self Isolation Choir which spread worldwide during the first lockdown, and she showed us how it had evolved and brought joy to so many people in what had been a very lonely time for many. We even joined with the online Choir in a rousing rendition of the Hallelujah Chorus – despite wearing masks!

A delicious tea was then provided, during which festive quiz questions were passed round the tables, and we all had a chance to catch up with friends we had not seen for some time as well as meeting new ones. Past and present Presidents and Secretaries were then invited to cut the beautiful centenary cake. The appearance of Father Christmas caused much hilarity and everyone went home with a Christmas present and card. We all agreed that it had been a wonderful afternoon and a true celebration of Pangbourne WI's long history in the village.



At our first meeting in 2022 we welcomed Debi Evans as our speaker. Debi is a local author who has written a series of five children's books about *The Secret Adventures of Rolo*, in which she cleverly uses Rolo's adventures to bring history to life. Rolo is a time travelling Jack Russell terrier and is Debi's own dog who she and her son rescued from a Dogs' Trust. The books are written seemingly by Rolo, and he frequently refers to "the smiley lady and the floppy haired boy".



This sparky little dog with a huge personality discovers a secret life beyond anything he could have imagined when he is told by a tree dragon, Athelstan, that he is "the chosen one". Unsure at first what that means Rolo discovers he can take part in events in history, without his owner's knowledge, as he travels back in time leaving his (paw) marks in history.

Debi outlined several historical events in which Rolo had played a part, such as the invention of cats eyes (which involved a cat he had befriended caught in a car's headlights), a visit to the Iron Age, the signing of the Magna Carta, and foiling the Gunpowder Plot. One particular tale which resonates with children and adults alike was when Rolo became involved in the rescue

mission for survivors of the Titanic. He found himself aboard the Steamship Carpathia and, by constant barking, alerted the crew to flares sent up by lifeboats, thus rescuing many people (and dogs!).

We all enjoyed Debi's fascinating talk, which she also presents to schools to enhance children's understanding of history in a format that they will find easy to remember through the eyes of this delightful little dog.

We are looking forward to our February meeting when we will hear about the history of Hollywood through the making of *The Wizard of Oz*.

If you would like to join our friendly group of ladies, you will be assured of a warm welcome. Pangbourne WI meets on the second Tuesday of the month at 2.30pm in Pangbourne Village Hall, and we have a very interesting programme of speakers and demonstrations. If you would like to know more, please contact our President Sue Smith on 0118 983 3258 who would be delighted to hear from you.

Judy Schurer

Do you belong to a Local Organisation?

Do you have news you'd like to share? We'd love to hear from you . . .

Send your article to pangbourne@heraldgraphics.co.uk by 4th February for inclusion in the next magazine*.

(*please also include any images separately; receipt of copy is not a guarantee of inclusion)

LOCAL ORGANISATIONS

PANGBOURNE CRICKET CLUB

The snick of a wicket as the next man is bowled. Your pads are on, and it's your turn to bat. The score is 39 for 3. The target is 156. There are 21 overs remaining. It's another glorious Sunday summer afternoon of cricket.

Pangbourne Cricket Club consists of a group of enthusiastic people of all ages and ability. We play friendly 35-over games on Sunday afternoons against teams from all around the area. When Covid restrictions permit, we are lucky enough to have the use of the Pangbourne College pitch. We also have a nets session once a week where anyone can just turn up and have a go.

For the last couple of years that emphasis on 'friendly' has been a particular boon. The simple pleasure of getting out of doors and playing in the sun whenever restrictions eased has been a surprising relief after being locked down for so long.

The opening story happened to one of our team in July last year. He and his fellow batter put on a truly mesmerising half century each, to win with 14 balls to spare. We can't win them all of course, but whatever the outcome, we usually have a pretty good time. Come and join us!

If you are interested in playing this coming season please contact Dan on 07956 526505.

Alex Payton



Photo: Ryan Quinlan

Shantha Weerasiri



**PLAY
CRICKET
FOR
PANGBOURNE**

CALL Cpt. DAN: 07956 526 505

www.pangbournecc.org



**PANGBOURNE
& DISTRICT
BOWLS CLUB**

OPEN DAY

**Sat 9th
April 2022
2pm - 5pm**

- Equipment provided
- Wear flat footwear
- Refreshments available

Recreation Ground
Thames Avenue
Pangbourne
Reading
RG5 7BY

**Celebrating
100
YEARS**

**The sport for all
Come along and
give it a go!**

Phone: 0494883471
Email: dan@pangbournecc.org.uk
Website: www.pangbourneclub.org.uk

LOCAL ORGANISATIONS



ONE HUNDRED YEARS OF BOWLING IN PANGBOURNE

In 1922, the British Broadcasting Company (BBC) started daily radio broadcasts from its studio 2LO in London, scientists discovered that insulin can be used to treat patients with diabetes and, in Sheffield Crown Court, serial bigamist Theresa Vaughn, age 24, confessed to having been married 62 times since 1917 in 50 cities in three different countries.

In the same year, while Kenneth Grahame was living at Church Cottage, a group of men and women were creating a new bowling green in our sleepy village near the banks of the River Thames. I wonder whether Kenneth ever went down to the bowls club and had a go.

100 years later, Pangbourne and District Bowls Club continues to provide excellent facilities at our home next to the tennis courts at the Recreation Ground in Thames Avenue although our membership, like many other clubs, has seen a steady decline over the years.

We are now actively looking to recruit new adult members, with or without experience of bowls, to join us. We would appreciate hearing from individuals and local businesses who may be able to offer any support.

Bowls has long been considered a pastime for retired people but this could not be further from the truth. It is a highly skilled and enjoyable game for all ages with games and matches played in the afternoon and evenings both during the week and at weekends.

Why don't you come along to our Open Day on Saturday 9th April from 2pm to 5pm and have a go. All you need is a pair of flat shoes (to protect the green). We will provide a set of bowls and someone to show you what to do.

This season, new members pay just half the normal membership fee saving you £50. We also hold social events across the playing season welcoming all members and their families to join in.

For further details, please contact Alan Copeland by e-mail to alan@alancopeland.co.uk or by phone on 01491-681471. You can find our full programme of fixtures on our website: www.pangbournebowls.co.uk.



LOCAL ORGANISATIONS



ADVENTURE DOLPHIN



The New Year began with the team at the Centre beginning to develop the summer programme. The draft was agreed at the Leaders Day at the end of January. After the last two difficult years, we are excited and looking forward to being able to offer a full range of courses and club activities. Keep your eyes open for the summer programme information for kayaking, canoeing, stand up paddleboard and climbing courses.

DOLPHIN COMMUNITY HUB

Would you like a room with a view to work or meet in? I dare you to find a better view than the Dolphin Centre on Pangbourne Meadows

Over in the Dolphin Community Hub we can offer you a different office environment, with a warm welcome. We're a small, friendly shared workspace, designed to provide a comfortable office environment away from home for the small business owner, self-employed or home worker.

We have serviced desks, 'Hot desks' and great meeting/training room spaces for hire on an hourly, daily, weekly or monthly basis.

Are you tired of working from home but don't wish to commute?

- Do you need an extra desk space, but just on an ad-hoc basis?
- Are you 'zoomed' out and would like a small meeting space?
- Are you a local business who needs a meeting/training room or some extra space?
- Do you have a great workshop idea, if only you had the space?
- Would you like a desk with a view?

If you say a big YES to any of the above, you may want to come and have an introductory visit (by appointment) around the Hub in the Adventure Dolphin Centre by Pangbourne Meadows.

Contact Angela on 07860 274162 for more information or send us an email on bookings@adventuredolphin.co.uk.



COMMUNITY GROUPS

Our current groups are listed below, should you or your organisation wish to book the hall on a regular basis or just a one off event please contact Angela at bookings@adventuredolphin.co.uk.

MONDAY		
9.30am-11.30am	Tai Chi	info@karenponds.co.uk
5.30pm-6.30pm	Yoga	yogabyhelma@gmail.com
TUESDAY		
11am-12pm	Yoga	bara.cechova@gmail.com
6pm-8pm	Pilates	julia.pilates@yahoo.co.uk
WEDNESDAY		
9.30am-10.30am	Pilates	julia.pilates@yahoo.co.uk
6pm-7pm	Zumba	rachelzumba4043@gmail.com
THURSDAY		
8am-9am	Pilates	julia.pilates@yahoo.co.uk
FRIDAY		
12.30pm-3.30pm	Art Class	art-course@hotmail.com
SATURDAY		
6pm-8.30pm	Dance Exercise	ireml@hotmail.com
SUNDAY		
9am-11am	Rugby Tots	

Beavers meet on a Thursday between 5.30-6.30pm. and Scouts meet on a Friday between 6.30-8.30pm please contact suzanne@stout.org.uk for more details.

We are keen to see more use of our facilities by community groups during the day, more information via bookings@adventuredolphin.co.uk.

DUKE OF EDINBURGH'S AWARD

As we reported in the last issue we have over 50 young people working towards their Bronze Award this year. This term we have been working on the expedition section navigation and route finding. The group have completed first aid training, our thanks to Cliff Coombes and Alan Brown for coming in and delivering the sessions. The group have split into eight expedition groups and are now working on planning a day walk in March.

The Silver and Gold Award groups have also split into their expedition groups and have been trained in first aid. The Silver group are looking to start their water based canoe training, while the Gold group have been completing their canoe training since October. This term they have completed a day paddle and worked on skill acquisition. As a group they have reached the required standard in camp craft through their Silver Award. The focus is to reach the required stamina for a four day canoe camping expedition.

We have over eighty participating in the Award programmes at present and we are short of leaders to help. If you are interested in working with our DofE

LOCAL ORGANISATIONS



group and joining the team we would love to hear from you. We meet on Monday evenings between 7-9.30pm. For an informal chat please contact us via email initially at dofecoordinator@adventuredolphin.co.uk.

PADDLESPORT

The regular water based race training sessions on Saturday mornings are well attended as too the Thursday night fitness session, our thanks go to Vicky Metcalfe and Matt Westell and their teams. The group are now training for the winter endurance races, the Waterside Series based in Newbury and the Thameside Races in Reading in preparation for the 125mile Devizes Westminster canoe race over the Easter weekend. We hope training goes well and that we may have crews competing in the DW, so watch this space.

The recreational paddling on Sunday mornings has continued over the winter for members, led by Nick Hatchett and Mark Edwards. The paddle is relaxed and the group stop off for refreshments along the way before heading back to the Club house, after paddling about four miles.

Changes for the summer this year will include courses being run monthly over four evenings, on Wednesday and Thursday evenings, for kayaks and canoes. Stand up paddleboards will be run over two weeks. These changes have been in response to feedback received from participants over last summer.

We are hoping to team up with another group to run guided paddle tours over the weekends and summer holiday courses once again, more details later on in the year.



Sunday morning paddle group

CLIMBING

Due to Covid and the size of our climbing room we have not been able to offer our usual programme of courses. However, with more people being vaccinated the team have begun to run a limited programme. If you are interested please contact gerry.wigglesworth@adventuredolphin.co.uk for up to date details on what is available.

We are now very short of adult climbers who are able to help lead people on our climbing wall, which is severely limiting our club programmes. To counter this we would like to start an adult training course to help fill the gap. If the idea of climbing interests you and you would like to have a try please contact us on info@adventuredolphin.co.uk. If you are already qualified then the wall and equipment is available for hire.

NEW TRUSTEES

We are pleased to welcome two local people on to the board of Adventure Dolphin. Peter MacIver and Anne Huddart were appointed Trustees in December and are now following an induction process.

We still have a number of vacant positions. If you are interested in what we do and have some time and a willingness to get involved then please contact us by emailing the trustees@adventuredolphin.co.uk. Our A.G.M. is planned for Thursday 7th April 7.00pm at Dolphin House.

LOOKING TO THE FUTURE

Adventure Dolphin has always encouraged its members to train and explore, so evoking some recent images of a Canadian Adventure. Make a dream become a reality.

For more information please visit our website www.adventuredolphin.co.uk.

LOCAL ORGANISATIONS

WHITCHURCH HILL CAMERA CLUB

We gradually moved away the blanket grey skies of January and by the time of the March/April issue (No.167) of the PANG MAG we all can, hopefully, enjoy our surrounds once more. I share with you WHCC member's image of Marlow Bridge – Marlow a little outside the required local sphere at 29 miles.

Quite a few of our members post their images to online forums to be sold as is, or printed onto mugs etc. There is a commission paid, not huge, but how satisfying to share your work with others. 'Marlow Bridge' is one such having recently sold. Sixteen (yes 16) mugs in one lot to be used as conference freebies in a well known Marlow hotel, now how satisfying is that?



MARCH

Wednesday 2nd – New Digital Adventure. This new talk by Colin Harrison FRPS FBPE FIPF MFIAP MPSA GPSA EFIAP/d3 FRPS MPAGB AWPf shows the creative side of his photography including some of his digital “secrets.” Colin will be covering the many different genres of his work, including images used in International panels and exhibitions, the “believe it or not” and “really?” images, together with how to replace the sky and how he uses the lesser known imaging software. A full evening. www.colinharrisonphotography.uk

Wednesday 9th – Print Competition No. 3. No set subject, our prints will be judged by Kathy Chantler ARPS from the Imagez Camera Club.

Thursday 10th – Zoom Meeting

Wednesday 16th – Digital Audio Visual Competition. Our annual delve in to the world of audio visual, and as usual there is a good selection of digital sequences to view. The judges for this evening will be the members themselves who will determine the winner.

Wednesday 23rd – All Bar One Part 1. Micki Aston CPAGB MCloJ makes a welcome return visit to take us on the first half of a photographic journey to every single state in the USA except Hawaii. This is literally a journey around all 50 states (including Washington DC as a state). Part 2 to follow next season. www.astonimages.com

Wednesday 30th – 6x4 Competition and Discussion Evening. This very popular competition which we can all enter, will be held in the first half of the evening. The second half of the evening gives you the chance to vote for Set Subjects which will be used next season.

Wednesday 31st – JPCR 6-Club Competition. The Burghfield Camera Club are the hosts for this year's competition which features the very best images from six local clubs. This major competition will be judged by Daan Olivier FRPS AFIAP from the Bracknell Camera Club.

APRIL

Wednesday 6th – Digital Competition No 4. No 'Set Subject' tonight when our projected digital images are judged by Damon Guy from the Marlow Camera Club.

Wednesday 13th – Great Railway Journeys London to Penzance. Albert Braithwaite APAGB takes over from Michael Portillo and guides us along our local Great Western line.

Wednesday 20th – Print Competition No 4. Once again no 'Set Subject' tonight when our prints will be judged by Brian Burden LRPS from the Wokingham.

Thursday 21st – Zoom meeting

Wednesday 27th – Lockdown Wiltshire Wildlife. We are pleased to welcome back Pam and Eddy Lane both ARPS DPAGB EFIAP APAGB with a selection of stunning Natural History images taken in their home County during the recent lockdown period. www.eddyandpamlanephotography.zenfolio.com

Thursday 28th – Studio Evening. Your chance to practice your portraiture skills when we invite professional models to sit for us. We may ask you to pay a small fee to cover their expenses.

During our season WHCC meet, mainly on a Wednesday evening, at the Village Hall, Manor Road Whitchurch-on-Thames at 8pm. Refreshments with a short break at 9pm. Monthly/quarterly or 'on the day' fees allowing you to cherry pick your visits. Find us on www.whitchurchhillcameraclub.com.

Best wishes, Lyn Higgs



PANGBOURNE TWINNING ASSOCIATION

Because of the deadline for the submission of material for the March issue of The Pangbourne Magazine, this piece is being written at the end of January.

There is still a warm glow in Twinning circles from the very successful **Fête des Rois Epiphany Dinner** on 7 January, held again at The Ferryboat, Whitchurch. The French-themed menu provided excellent food and everyone enjoyed a slice of the *Gâteau des Rois*, the Three Kings cake associated in many countries with Epiphany. In France a figurine of the Christ Child, called a *feve*, is hidden inside, and whoever finds it is crowned king or queen. Cathy Pumphrey became our queen for the evening.

We have already held our first **Marcher et Parler** walk of 2022. These walks, on a Tuesday morning, are continuing throughout the winter, weather permitting – and it has to be really unpleasant before it does not. They remain a very popular way of taking a stroll in the countryside, the chat being mainly in French, and with a pub lunch or coffee to finish.

Further information is available via:
Website www.pangbourne-twinning.org or
Facebook www.facebook.com/pangbournetwinning.



FORTHCOMING EVENTS

Providing that you read this article in time, our next **French Film Night** is on **Sunday, 27th February**, at the usual time of 7.30. **Irreplaceable ('Medecins de campagne', 2016)**, a film by Thomas Lilti, is about a country doctor. He considers himself irreplaceable, but when he becomes seriously ill, he has to find a replacement.

If that date has already passed, our next and final film for the season is on **Sunday, 27th March**. **Frantz, 2016**, a film by François Ozon, is set in Germany in 1919 – Anna visits the grave of her fiancé, Frantz, who died in

battle in World War One. She meets a young Frenchman, Adrien, who declares himself a friend of Frantz . . . a timely exploration of healing and forgiveness across European borders.

The committee has decided to move the **Salsa Evening** to late Spring. We are keen for this evening to be accessible to all, and we felt that, as the Covid scene has evolved, February is too soon.

Our next event is the **Spring walk and pub lunch**, at a date that will be confirmed to anyone who is interested. Our previous ones, in August and October, were very successful.

We are still hoping to **visit Houdan** over the weekend of **Friday 27th May – Monday 30th May**. At the time of writing, although the restrictions have recently changed, the overall picture remains unclear, and the visit may have to be deferred.

Looking well ahead, we are delighted that our next **Art Café** has been arranged for **Saturday, 18th June**.

In the meantime, a morsel of culinary history:

OXTAIL SOUP

Oxtail soup, although now an essentially British dish, originated with the Huguenots, the French Protestants.

The Huguenots had been officially protected from religious persecution in France for nearly 100 years by the Edict of Nantes, until Louis XIV revoked the Edict in 1685. The Huguenots, now persecuted in their own country, scattered across the countries of Northern Europe, with some 25,000 taking refuge in England, and, incidentally, introducing us to the word 'refugee', from French *réfugié*. Although mostly skilled craftsmen and professional people, they were often in serious need of work and shelter, with many settling around London, and especially at Spitalfields.



Oxtail soup.

Spitalfields at the time was on the edge of the City of London, and the location of the abattoirs. The tails of cattle were discarded by the butchers of the period as having no culinary value. It is said that poor Huguenots used their French cookery knowledge to create the Oxtail Soup and Stew that we know today.

Stay safe and well, and *à bientôt!*

Nigel Suffield-Jones and Lauren Kilsby

SPORTS INJURY TREATMENTS
Formula Health, 10 Reading Road, Pangbourne, RG8 7LE

- Focused assessment, treatment and rehabilitation of sports injuries.
- Includes physical therapy, personalised exercise plan and training and recovery advice.
- Suitable for recent injuries, repetitive strains or recurrent pain, that's holding you back in your sporting performance, with a targeted approach to prevent future occurrences.
- Expert clinicians with extensive professional sports backgrounds including working in Formula 1, Olympic Track and Field Athletics, Running, Martial Arts and Weightlifting.

Formula Health is an award-winning integrative healthcare centre located in Pangbourne with a collaborative team of professionals including Osteopaths, Nutritional Therapists, SBCoaches, Acupuncturists, Massage Therapists and more.

FOR MORE INFO: www.formulahhealth.co.uk | info@formulahhealth.co.uk | 0118 428 1825

themovementclinic

You're not normal. No one is. We are all different and we're all wonderfully unique.

At The Movement Clinic we pride ourselves on helping everyone, young and old, find a way to move more and feel better.

We don't do gimmicks or mysterious gadgets, we don't make outrageous claims, we don't offer quick-fix promises, fad diets, or celebrity exercise regimes.

We rely on decades of collective experience and expertise to establish what works for you.

So whether you're injured, in pain, stressed, overweight or just tired of doing the same thing over and over again and getting the same disappointing results, give us a call and find out how we can help.

Personal Coaching • Weight Loss • Strength & Conditioning • Running Technique • Injury Prevention & Rehabilitation
Corrective Exercise • Physio-led Pilates • Specialist Pilates for People with Mobility Issues • Yoga • Massage • Injury Treatment
Strapping & Taping • Neurological Physiotherapy for Adults and Children

www.themovementclinic.co.uk • 0118 327 9405 • info@themovementclinic.co.uk

The Boathouse
Dental Surgery
www.boathousedental.co.uk
Tel: 01491 872394

Are Dental Implants for you?

If you have missing teeth or loose fitting dentures, the answer is **YES!**

"Cool, calm and efficient with latest technology, great place for an implant!"
Mr Anthony Guy

High Street, Goring on Thames, Oxfordshire RG8 9AB
Email reception@boathousedental.co.uk
Call 01491 872394 to book a consultation

A breakthrough treatment for complete pelvic floor rehabilitation



WOMEN'S HEALTH

Over 40% of women in the UK suffer from urinary incontinence

Andresa offers the BTL Emsella, a non-invasive, clinically proven solution

- 95% success rate
- Remain fully clothed throughout
- Results in just 3 weeks
- Backed by science & FDA approved



Andresa Aesthetics Exclusive Skin Health and Laser Clinic
Tel: 01635 800183 | info@andresa.co.uk | www.andresa.co.uk
Lower Wasing Barn, Wasing Lane, Near Woolhampton RG7 4LY



THE ORATORY

MINIBUS DRIVERS (Term time only)

We are looking for friendly and motivated Minibus Drivers to work as part of the Transport Team to provide transport for our pupils. A full D1 Licence is required.

Shifts available: Monday to Saturday 6.00am-8.30am
Monday to Friday 6.00pm-8.30pm
School trips and sports events

For further details please contact the Human Resources department:
E-mail: recruitment@oratory.co.uk

Alternatively, please visit our website for an application form:
www.oratory.co.uk

The Oratory Schools Association Registered Charity No. 309112 is committed to safeguarding and promoting the welfare of children. Applicants must be willing to undergo checks with past employers and the Disclosure and Barring Service.

Plant & tool hire for trade & DIY.

Your first choice for the best equipment, service and price. Go to www.didcotplant.co.uk to check our online catalogue.



DIDCOT PLANT
PLANT AND TOOL HIRE FOR TRADE & D.I.Y.
www.didcotplant.co.uk

01235 814000

Shaun Guard TV & WIFI SERVICES

- Aerials - supplied, repaired & poor reception solved
- Satellite - Sky Q dish upgrades, discreet dish installations also foreign TV
- Internet - blackspots cured, data cables to your TVs / computer
- TVs - hung on your wall or set up & tuned
- CCTV & Door Entry - domestic installations

 OXFORD AERIALS

Call Pangbourne 01189 639113
www.oxfordaerials.co.uk

PAUL BELCHER

PROPERTY SERVICES OF PANGBOURNE

01189843722 M 07888680834

paulbelcherpropertyservices@yahoo.co.uk



ALL INTERIOR & EXTERIOR WORK UNDERTAKEN

AND COMPLETED TO A HIGH STANDARD

CALL OR EMAIL FOR FREE INDEPENDENT ADVICE

AND A NO OBLIGATION QUOTE

ALL WORK FULLY INSURED - NO JOB TOO SMALL

STANROD MOTORS 2

is happy to collect and deliver your car
for all your MOT and servicing needs

Call Steve or Sean
at **STANROD MOTORS 2**
today on **0118 976 7686**

Open 8am-6pm Mon-Fri • 8am-Noon Sat
14 Station Road, Pangbourne, Reading RG8 7AN
email: info@stanrodmotors2.com



We stock delicious local, British & Continental cheeses as well as a wide range of delicatessen products. We're proud to support small artisan producers.

We pride ourselves on our customer service and are dedicated to providing cheese at its very best.

Come and visit us at 17 Reading Road, Pangbourne
Find us on Facebook – The Pangbourne Cheese Shop
Follow us on Twitter @PangCheeseShop

www.pangbournecheeseshop.co.uk 0118 984 3323

PICTURE FRAMING PICTURE RESTORATION

R. G. Bridgewater

*(established in the trade since 1956,
apprenticed at Reading Fine Art Gallery,
also with Picture Crafts of London Street, Reading)*

- Oils and pastels restored
- Watercolours, engravings, prints de-foxed and cleaned
- Conservation mounting and framing
- All aspects of framing undertaken
(tapestries, silks, butterflies, medals, etc)

Tel: 0118 984 4622



Enjoy Spring favourites with
our tender Legs of Lamb.
Order now in time for Easter.



greensofpangbourne.com 0118 9842063

GoPButchers GreensOfPangbourne

PUPPY AND DOG TRAINING



**ONE TO ONE TRAINING
IN YOUR OWN HOME**

WORKSHOPS AND CLASSES

Contact: Sandra Emmons
Telephone: 07973 272911
Email: sandra@happipup.co.uk
Website: www.happipup.co.uk



REBECCA KINGWELL
FINANCIAL PLANNER

Comprehensive, bespoke, financial advice & planning



Rebecca Kingwell
BSc (Hons), DipFA

Would you like to start making better provision for your future and retirement?

Do you need help understanding your existing pension arrangements?

I offer specialist advice on pension planning, investment planning, savings, tax efficiency and life and critical illness protection.



e: rebecca.kingwell@sjpp.co.uk t: 0330 053 6797

www.rebeccakingwell.co.uk

Oxfordshire · Berkshire

Rebecca Kingwell Financial Planner is an Appointed Representative of and represents only St. James's Place Wealth Management plc (which is authorised and regulated by the Financial Conduct Authority) for the purpose of advising solely on the Group's wealth management products and services, more details of which are set out on the Group's website at www.sjp.co.uk/products



Macbeth

Replacing risk, with reassurance



Professional advice with a personal touch

Macbeth is a leading independent chartered insurance broker and financial adviser working with businesses and private clients.

Discover how we're different:

0118 916 5480

macbeths.co.uk

Authorised & Regulated by the Financial Conduct Authority





THE ORATORY

HMC CO-EDUCATIONAL 11-18 CATHOLIC BOARDING AND DAY SCHOOL



Where everyone finds their place to excel

WHOLE SCHOOL OPEN MORNING

Saturday 9 October

6TH FORM OPEN MORNING

Saturday 2 October

- Top 3% of schools for value-added at A Level
- Daily school bus route from Pangbourne
 - Outstanding sporting tradition
 - Day, weekly, flexi and full boarding

Near Reading • 01491 683522 • registrar@oratory.co.uk • oratory.co.uk

Treating you like family from one generation to the next.

In a good way, of course...

We make buying, selling and letting easy for you.

People come to us because they know we always do the right thing.

Because we get results and are always there when they need us.

And, most of all, because we always treat them like family...

Family values go such a long way...

For more than 70 years, we've been treating people like one of our own – in Reading, Tilehurst, Pangbourne and beyond.

You'll find us friendly, knowledgeable, professional – and here for you.

With Patrick Williams, you're family.
Give us a call and find out for yourself.

Reading: 0118 957 3579
Tilehurst: 0118 942 0777
Pangbourne: 0118 984 4444
info@patrickwilliams.co.uk



www.patrickwilliams.co.uk



WHITCHURCH PRE-SCHOOL

We've had a great start to the Spring Term at Whitchurch Pre-school. After some very special festive events last term including a wonderful Christmas party and extremely cute carol concert, we've been doing lots of fun Winter activities.

We have been baking, duplo building, pasta mixing, playing garden games, dancing and music making, mud painting and much more. In our early years science sessions, so far this term the children have been mixing up fizzy volcanoes, weighing things, measuring spaghetti, colour mixing and other exciting hands-on stuff!

The children get a chance to try a whole range of fun activities, no matter what sessions and days they attend, as we rotate our activities across the week and follow the early years curriculum.

The refurbishment of our classroom in 2021 is really paying dividends, the children are making the most of the fantastic set up including a magical book den, home corner, activity mat, tray tables and more. All of this makes our Pre-School a really special place for our little people to grow and learn.

Register now for places in September 2022 or earlier.

Places are still available at Pre-School for Spring and Summer term this year but are filling up fast with some sessions almost fully booked. We recommend that you get in touch as soon as possible to register if you are thinking of signing your child up to join this year.

CONTACT US: hello@whitchurchpreschool.org | 0118 984 4516 | www.whitchurchpreschool.org

SUPPORT US – PLEASE HELP US REACH OUR £10K FUNDRAISING TARGET

We are a charity run by a parent volunteer committee and, with the ever-increasing gap between funding for early years places and costs, our fundraising is essential to providing the activities and facilities that are so important for Pre-School children. This year we are raising money for roof repairs and to replace the sandpit and astroturf areas.

3 FREE and EASY ways to support us:

- Become a Co-Op Member and select Whitchurch-on-Thames Pre-School as your local community cause. For every £1 spent 2p will be donated to our cause.
- If you shop with Amazon, go to <https://smile.amazon.co.uk/> and enter Whitchurch On Thames Pre-School as your chosen charity, 0.5% of your order value will be given to Pre-School
- Sign up to easyfundraising.org.uk to support "Whitchurch Pre-School – Whitchurch-on-Thames". When you use the easyfundraising website or app to shop with retailers like John Lewis, M&S, H&M, the retailer sends us a donation of up to 5%. You can register here (completely free): https://www.easyfundraising.org.uk/causes/whitchurchonthamespresch/?utm_campaign=raise-more&utm_content=w4

Please also look out for our fundraising events, and to donate any time you can scan the QR code here or go to: <https://donate.giveasyoulive.com/charity/whitchurchpreschool>

Thank you for all of your support!

Registered Charity: 1183193



- Osteopathy & Cranial Osteopathy
- Podiatry & Chiropody
- Sports & Remedial Massage
- Acupuncture
- Reflexology
- Counselling - Adults & Adolescents
- Hypnotherapy & NLP
- Thai Yoga Massage
- Homeopathy
- Nutrition

Some of the conditions we treat at the Centre:

Back Pain Headaches Neck Pain Sports Injuries Foot Problems Sciatica
Muscle Tension Whiplash Smoking Cessation Weight Control Stress
& Phobias Dietary advice for IBS

Visit our website to see what else we can treat www.thealewellbeingcentre.co.uk

37 High Street, Theale,
Reading RG7 5AH
0118 930 3535
www.thealewellbeingcentre.co.uk



PANGBOURNE VALLEY PLAYGROUP

PANGBOURNE VALLEY PLAYGROUP (PVPG) is a charity, not-for-profit pre-school located within the grounds of Pangbourne Primary School, which offers many benefits; not least the close link with the school, enabling a smooth transition into full time education.

We are open Monday to Friday during term-time and work with a unique, child-centred approach, where children can learn and develop at their own pace within a happy atmosphere.

We offer FREE CHILDCARE!!!

PVPG offers childcare that is **FREE** to eligible 2-, 3- and 4-year-olds. This includes 15 hours **FREE** childcare for **ALL** 3 and 4 year olds, and 15 and 30 hours **FREE** childcare for eligible 2-4 year olds.

September 2022 spaces available!

To find out more email us at pvpq.enquiries@gmail.com or visit our website www.PVPG.org.uk

FUNDRAISING

Christmas Raffle

We are very appreciate of the prizes generously donated by local business for our final profit was £578.70, kindly rounded up to £600 by Stephen Mills of Steve Mills Vermin Control. Thank you so much Steve for your support and to the businesses of Pangbourne as well as those who bought tickets.

Pangbourne Club's Christmas Fair

Sincere thanks to those who baked, donated and bought to support. We made a healthy profit of £115 and even catered for our canine friends with delicious home baked dog treats!

UP COMING EVENTS

Easter Duck Hunt is BACK!

This popular activity will return during the Easter holidays so please keep your eyes on our website, and lookout for information around the village nearer the time.

Royal Platinum Jubilee Scarecrow Trail – May school holidays – June 4th /5th

We are very excited to be organising our popular Scarecrow trail in honour of the Queen's Platinum Jubilee celebration. Royal themed scarecrows will be positioned around the village with maps/entry forms going on sale during the May school holidays.

If you have helped previously or would like to help by either making a Royal Scarecrow or allowing the use of your premises to position one, please get in touch with Olwen 07773 747022. Thank you!

****VOLUNTEER'S NEEDED****

To reduce costs, we are trying to clear as much of our playground garden area as possible prior to work beginning this summer. Nearer the time strong pairs of hands needed for dismantling/clearance work – please get in touch for more information Olwen 07773 747022.

This term the children have been really enjoying experimenting, making links and predictions, exploring how change can affect the outcome. These have been explored in three main topics:



- Volcanoes – creating volcanos with vinegar and bicarbonate of soda
- Chalk smashing – chalk outside and a hammer.
- Music – different instruments and different ways to play them.

Depending on the level of understanding each individual the comments might be as simple as 'Lets try hitting that drum with this stick instead' or 'I wonder why it made that pattern'. Each statement though gives the child the opportunity to think about it rather than be told the answer.

Science is an activity children of all ages can enjoy and encouraging them to express their own thoughts and opinions is a life skill, as is making the wrong prediction and learning from it.



We continue to welcome many new children into our setting and are thoroughly enjoying watching these new relationships develop – for many of our children social interaction with others of a similar age has been greatly missed out on over the last two years so encouraging sharing, turn taking and negotiation is a big step.

To add to the excitement of the new year we are also well under way with plans for our new garden Playground. *A huge thanks to Kings Tree Services* for their help with tidying up our trees (and leaving the garden area practically sparkling!).

If you can provide a service, skill or time to help us in the near future please do get in touch!

COMMITTEE NEWS

Vacancy for Playgroup Manager with minimum Level 3 qualification.

PLEASE SUPPORT US!

If you would like to support us, please visit:

www.pvpq.org.uk/fundraising/

www.easyfundraising.org.uksmile.amazon.co.uk

www.westberkshirelottery.co.uk/support/pangbourne-valley-playgroup

Best wishes and stay safe from the Pangbourne Valley Playgroup committee and staff.

STACEY COPELAND EXPLAINS TO ST ANDREW'S WHY "GENDER SHOULD NEVER BE A BARRIER TO POTENTIAL"

St Andrew's welcomed former England football player and boxer Stacey Copeland, and old pupil, Eva, to host an assembly and sessions on gender equality and inclusion.

Stacey made history as the first British woman ever to win a Commonwealth title for boxing in 2018, and as an amateur boxer, won a European silver medal, and like her father, the National Championship.

Deeply passionate about making a positive impact through sport, Stacey founded charity, **Pave The Way** in 2017, to challenge gender stereotypes, spark social change and make a difference.

Eva, now at Bradfield College, led a presentation on respect, inclusion, diversity and equality during Year 8 at St Andrew's, prompting the foundation of a new pupil committee called RIDE.



Stacey said: "It was such a pleasure to visit St. Andrew's. Pupils were so enthusiastic and asked lots of questions about equality and inclusion, and are clearly inspired by the RIDE initiative. I am looking forward to seeing how Eva and the team continue to make a difference."

An experienced public speaker, Stacey talks in hundreds of schools, communities, businesses, and last year spoke at European Parliament and the United Nations about women in sport. She also presents *The Dead Good Show* and *The Sunday Sports Show* on BBC Radio Manchester.

You can learn more about Stacey and her charity, **Pave The Wave**, here: <https://stacey-copeland.co.uk/>.

*To visit St Andrew's for an Individual Tour, please contact
Director of Admissions, Jane Taylor, taylorj@standrewspangbourne.co.uk.*



OPEN MORNING FRIDAY 4TH MARCH 2022
Book your place standrewspangbourne.co.uk | 0118 974 4726



PANGBOURNE PRIMARY SCHOOL

Pangbourne Primary School encourages everyone to become life-long learners, respect each other and to "REACH for their star."



We are having a very busy time at Pangbourne Primary School and enjoying our learning as we 'Reach for our stars!' Foundation Stage 2 pupils have been having an exciting time learning about space!



Some tricky challenges in design and technology in Y2 and Y6!



Mrs Laundry our ELSA (Emotional Literacy Support Assistant) has made this fantastic display in school.

Everyone provides the strength of support

Who are the people that really support you in your life?



These people are important champions. They cheer us on when things go well. They stick with us when life throws us a curve ball. They listen. They ask questions. They smile. They hug. They're people we like to be around. What kind of a champion are you for your child? Are you a fair-weather supporter? A rain-or-shine supporter? What's your unique way of supporting and loving your child? Your love and support for your child are critical. But you can't go it alone. You need others. Your child needs others. How supported and cared for does your child feel by neighbours, coaches, grandparents, aunts, uncles, parents of their friends, youth workers, and mentors? These other key adults are important players in helping your child jump over the hurdles in life. In fact, the more supportive adults your child has, the better, and by nurturing and loving all the children in our Pangbourne community, we help them grow to be loving, caring people themselves.

This term our assembly focus is 'Spreading Kindness'. In assembly we have looked at the words in the following song by Celeste.

A Little Love
Celeste

Put it in your pocket
Watch it move a mountain
Of all the things to be
I'd choose a kindness
And if you gave some to me
I think we'd find ourselves, here
Dancing in the street
Everyone we meet
Would smile a little daydream
It could be amazing
Wouldn't it be wonderful if
everybody gave a little love
Happiness
Nothing better in this world to get
than happiness
If I give this gift to you
Wouldn't everybody get a little love

*Melissa Fry – Headteacher,
Pangbourne Primary School*



WILL YOUR CHILD BE THREE BEFORE 31ST AUGUST 2022?



At Pangbourne Primary School we have places available for three-year olds, five mornings a week from September.

We can offer a safe and stimulating environment with experienced teachers and practitioners where your child will be nurtured and encouraged to learn new skills.

Children enjoy a wide range of learning opportunities inside and outside which develop their independence and resilience and prepare them for full time education.



Information and application forms available from:
office.pangbourne@w-berks.sch.uk



To arrange a visit, please call 01189 842315



FRIENDS OF PANGBOURNE PRIMARY SCHOOL

FOPPS (Friends of Pangbourne Primary School) is the PTA and charity which supports the children's education and experiences. We are a small, friendly group of volunteers who are always looking for new members and support.

In 2022, we will be focusing our efforts on raising funds for the Secret Garden area of school, a unique space, offering an ordered wilderness where the children can be creative, enjoy nature, be physically active, work independently and with their peers, and all within the safe confines of the school.

The plans for improvement would total £13.5k and would involve: building a lean-to, filling the pond, repairing and replacing picket fence, creating mulch paths, removing existing concrete slab and a general tidy up of the area.

Following the works and having been selected as one of the Co-op's local community causes for this year, we then hope to be able to work with the Co-op in establishing the Secret Garden as a community project, where the Co-op will bring the tea and biscuits in return for volunteer helping sessions, including planting trees to commemorate the Queen's Jubilee. Watch this space!

2022 DATES FOR THE DIARY

We are excited to be able to hold our first event of 2022 on **Wednesday 9th March**. This will be a social event to say thank you to all the amazing volunteers who helped us in 2021 at our key fundraising events. It's also an opportunity for any new and enthusiastic volunteers to come and find out more about what we do and share knowledge and ideas for future events. The event will be held at the **Pangbourne Club at 7.30pm** – keep an eye on our Facebook page for more details: @friendsofpangbourneprimaryschool.

Following its return in 2021, the **Pangbourne 10K** will be held on **18th September**. See you on the start line!

Pangbourne Fireworks will be back in all its splendour on **Saturday 5th November**.

EASY WAYS TO HELP RAISE FUNDS FOR YOUR LOCAL PRIMARY SCHOOL:

1. West Berkshire Lottery

Please help give our fundraising a boost by playing the West Berkshire Lottery, which raises money for good causes in West Berkshire.

- Tickets cost just £1 a week
- Chances at cash prizes every week – you could win up to £25,000!

<https://www.westberkshirelottery.co.uk/support/fopps>

2. Co-op Local Community Fund

We've been selected as one of Co-op's local community causes for this year. When you buy selected Co-op products and services, 2p for every £1 spent goes into your membership account. Co-op will split the same between like-minded organisations and local causes.

<https://membership.coop.co.uk/causes/57300>

3. Amazon Smile

Amazon Smile is a simple and automatic way for you to support a charity of your choice every time you shop, at no cost to you. When you shop at Amazon Smile you'll find the same price and products with the added bonus that Amazon will donate a .05% of the net purchase price to FOPPS.

www.smile.amazon.co.uk and choose to support Friends of Pangbourne Primary School (FOPPS).

4. Reduce! Reuse! Recycle for FOPPS!

We have a textile recycling bank just inside the school playground, so if you need to dispose of old clothes, shoes or other textiles please do drop your things into the collection bank at the Reading Road school entrance.

In addition, if you are a parent or carer with children at the school, we offer a second-hand uniform service. We have a wide range of school uniform available at only £1 per item. To donate, please bring in clean uniform to add to our collection. To buy, just get in touch with school reception who will connect you with our volunteers and arrange for you to pick up what you need.

If you would like more information, or would like to get involved, help or donate to your local primary school please contact us at info@fopps.org.uk.

We understand that visiting the dentist can be stressful for many people

Woodborough
HOUSE
DENTAL PRACTICE

We are constantly thinking about each person and their individual needs, offering warm, respectful and personalised dental care.

we treat
people

NOT JUST
TEETH



If you are worried about visiting the dentist please get in touch. Our caring, supportive and phobia-certified team is here to help anxious people feel at ease.

CONTACT US TODAY

T: 0118 984 3108 E: INFO@WOODBOROUGHHOUSE.COM WWW.WOODBOROUGHHOUSE.COM

neville & turner

Village & Country Property Agents

Are you considering selling or letting your home?

Our bespoke and unique service also offers a reputable in-house removals facility (locally or nationally) and can be included within our selling fees.

Find out why so many local people have recently sold via Neville Turner by contacting our office in Pangbourne on 0118 984 1841

barbaralegg@neville-turner.co.uk

www.neville-turner.co.uk



PANGBOURNE COLLEGE

SIXTH FORM OFFERING SET FOR EXCITING EXPANSION

From September 2022, the College will offer three additional courses to the Sixth Form programme of study. They are A Level Sociology, A Level Product Design and Level 3 BTEC Enterprise and Entrepreneurship.

Mr Mark Seccombe, Director of Studies says, "We are very much looking forward to enriching our Sixth Form offering here at Pangbourne. The new subjects will further modernise our programme of study, fully preparing our pupils for the future and supporting their university and career choices. We have already seen a substantial amount of interest from both internal pupils and external candidates."

TOP LONDON RUGBY CLUB SUCCESS FOR FOUR PUPILS

Congratulations to four of our Year 9 pupils, Marcus, Felix, Zac and Alexander, who have been offered places for Performance Pathways at two top London rugby clubs.

Marcus, Alex and Felix have all achieved places on the London Irish Developing Player Programme (DPP) and Zac has a place on the London Wasps DPP.

Our Director of Sport, Sam Hewick comments, "All of these pupils are being supported by our Sports Performance Programme and I'm delighted to see them flourishing. Their hard work and determination are already beginning to pay off and this is the start of an exciting journey for them."



COLLEGE FUNDS EXAMINATION HALL FOR NABUGABO COMMUNITY LEARNING CENTRE

During 2021 we have donated £13,000 to support projects at Nabugabo Community Learning Centre (NCLC) in Uganda. £8,000 of the funds have recently been used to create a new examination hall which is now open. The remaining £5,000 will be used to support pupils moving onto secondary school.

We work alongside HUGE, a charity based in Pangbourne which has been set up to make a difference to children in Uganda. It specifically provides financial and resource support to the NCLC.

Melanie Batten, Trustee at The Huge Partnership explains, "Ugandan law insists that all children sitting the Primary Leaving Exam (public exams children have to sit before going to secondary School) take them in an authorised exam hall. Before the hall was built, children had to travel a long distance and stay at another school to sit their exams. The new exam hall is also an excellent space for additional class facilities, community interaction and a quiet place for well-being meetings."



In normal times the College organises a trip to Uganda every two years with around 40 pupils. Spending three weeks in the area, everyone gets involved in vital local projects, and we hope to run the next trip in 2023.

OPEN MORNING – SATURDAY 19 MARCH

Our next Open Morning will take place on Saturday 19 March and is open to families who are seeking an independent senior education for their children. The event is an ideal opportunity to meet our staff, pupils and parents and to discover more about the Pangbourne community. To register, please visit: www.pangbourne.com/visit or contact the Admissions team at admissions@pangbourne.com.



Offering quality tree care
from a family run firm

40 years experience in
planting, pruning and removal

Free estimates and advice

Contact Stewart Bee on

0118 9595 222

07976 611128

beetreeservices@tiscali.co.uk

Seasoned firewood always available

Unit 12,
Manor Farm,
Peppard Common,
RG9 5LA



YOUR LOCAL GLASS AND GLAZING COMPANY

- All types of glass cut to size
- Mirrors, shelves and table tops
- Greenhouse glass and picture glass
- Full glazing service, trade and domestic
- Broken windows and shopfront glass replaced
 - Traditional leadlights repaired
 - Broken and misted double glazed sealed units replaced
- UPVC, aluminium and hardwood windows, doors and conservatories
 - Delivery service

CALL FOR ADVICE AND FREE QUOTATION

01491 629901



15 years guarantee
on all high performance felts

also

Tiling and Lead Repairs

Phone Bradfield

0118 9744701 or

07880 930 958

Email: eddylaming@hotmail.co.uk

38 years experience



NEIL HOULDEY *Quality Painting and Decorating*

- All types of interior and exterior work completed
- Advanced City & Guilds qualified
- General maintenance and repairs undertaken
- Gold CSCS card accreditation
 - 30 years experience
 - Fully insured
- Pangbourne and surrounding areas

07731 476100 • 0118 9845532

neil.houldey@yahoo.com

www.neilhouldeyqualitypaintinganddecorating.com



J A M Upholstery

Traditional Antique & Modern Upholstery
& Re-covering

Seat feeling soft and saggy?
Arms need firming up?
Lumbar lacking support?

Jenny can give your favourite chair the love and attention needed to get it back in shape, or simply give it a new look in a new fabric.

www.jamupholstery.co.uk

jenny@jamupholstery.co.uk 07976 443972
Based in Lower Basildon



DO YOU NEED A WILL OR LASTING POWER OF ATTORNEY?

If so contact Chris Lawn, a solicitor working locally, on 07843 679 239 or email chris@jonathanlea.net

Chris will visit you at your home. Appointments last approximately 1 hour and can be held during the day, evening or weekend.

Hillhampton Wills is now incorporated into Jonathan Lea Network Solicitors.

For further information visit www.chrislawn.com



A MEMBER OF THE INSTITUTE OF PROFESSIONAL WILLWRITERS AND FULLY INSURED



Barking Mad Dog Groomers now open on the High Street in Pangbourne

Book Now!



Barking Mad pet supplies

"Drop & Shop"

Dog & Cat Food
Small mammal supplies

Treats

Toys & Accessories

Raw Food

Fish food

Wild Bird food

and lots more!

Large bags of dog food and other items can be delivered locally

0118 207 0500

contact@barkingmadltd.co.uk
www.barkingmadltd.co.uk

ATB Accounting

Old Breedon School, 8-10 Reading Road,
Pangbourne RG8 7LY

0118 405 6000

Services include:

Bookkeeping from £18 p/h

Ltd Co. Accounts from £700 p/a

VAT Returns from £100 p/a

Self Assessments from £70 p/a

(ALL PRICES EXCLUDING VAT)

For a free quotation:

Call us on 0118 405 6000,

or call in – no appointment necessary,

or email: charles@atbaccounting.co.uk



PANGBOURNE VALLEY PLAYGROUP

PLACES NOW AVAILABLE

Pre-school childcare for 2 to 5 year olds. 30 hours and shared funding accepted. Morning, lunch club and afternoon sessions are available. We are located in the grounds of Pangbourne Primary School.



(0118) 984 1661
pvpq.enquiries@gmail.com
www.pvpq.org.uk



PANGBOURNE PLACE-NAMES

SHEFFIELD CLOSE

It may come as a surprise to read that the land where **Sheffield Close** stands has had at least four different names in the last 180 years. On a map of 1840 it is described as 'Part of North Church Field', the middle in a line up the north side of Pangbourne Hill of Upper Church Field and Further North Church Field. At some time in the later 19th century, perhaps around 1866 when the flints for St James the Less were extracted from the adjacent chalk pit that is now Formosa Place, it became Chalk Pit Pightle, where a *pightel* is a small enclosure.

When Millgate Homes put forward their plans soon after 2014 for the development of the site, they called it Breedon Place, claiming that this name was based on the Breedon Pippin apple. This apple is considered one of the best cider varieties, and was raised c. 1801 in Pangbourne by the Rev'd Symonds Breedon, a member of the family from Bedfordshire that bought Pangbourne Manor in 1671. The family sold the Breedon estate in 1894.



Breedon Pippin.

However, 'Breedon Place' was considered by the Parish Council to be too similar to the already existing Breedon Hill, and another name had to be found. With



HMS Sheffield.

its proximity to Pangbourne College and the Falkland Islands Memorial Chapel, councillors suggested, and the College approved, using street names derived from the names of ships involved in the Falklands War of 1982. HMS Sheffield, a guided missile destroyer, was heavily damaged by an Exocet air-launched anti-ship missile, and later sank. The ship was named after the city of Sheffield in Yorkshire.

Sheffield in Yorkshire is well-known; less so is **Sheffield Bottom**, Burghfield, and perversely, the derivation of the Shef- in both names is different. The Yorkshire name refers to the River Sheaf, the 'boundary river (*sceaf*)', probably between Mercia and Northumbria, whereas in Berkshire the reference is to a 'shelter (*sceo*)'. Both names,

first recorded in the Domesday Book of 1086, share *feld*, meaning in Yorkshire 'open countryside' and in Berkshire the slightly more restricted 'open land previously used for pasture'. These are both roughly half way in the linguistic evolution of *feld* from the 'wide expanse of open grasslands' of its meaning in Germanic, represented by the *veldt* of South Africa, to the limitations of a modern 'football field'.

The Anglo-Saxons brought the term *feld* from the Continent when they settled here in the 6th century, and applied it to open land, in contrast to land that was difficult of access, such as woodland. The line of modern villages in -field from **Bradfield** ('broad') to **Sherfield-on-Loddon** ('bright'), and including **Englefield** (associated with the Angles), **Wokefield** ('holy', with a temple) and **Heckfield** ('high'), all stand on what was in Anglo-Saxon times the western edge of Windsor Forest. This swathe of land was gradually converted from rough pasture to arable land, and by the second half of the 10th century *feld* refers to communally cultivated arable land.

Aelfric, the first Abbot of Eynsham, Oxfordshire, who was appointed in 1005, was a great teacher. Those readers who were compelled to learn Latin in their youth might groan to know that he was the first to compile a Latin grammar in English. However, he is particularly known for his *Colloquy*, a conversation manual to help his novice Benedictine monks learn Latin. The imaginary dialogue, in Anglo-Saxon and Latin, is between a teacher and several pupils who each talk about practising different trades. It is significant because it presents the life and activities of the middle and lower classes of Anglo-Saxon society, about which we know relatively little. In it the ploughman says:

"I go out at dawn. I drive the oxen to the field (*feld*) and yoke them to the plough. . . I have a young boy who drives the oxen with a stick". The significance for modern scholars is that at this period the *feld* is the area being ploughed, the implement being left there at the end of the day. We thus have an oblique early reference to the open-field system.



Medieval Ploughing.

PANGBOURNE PLACE-NAMES

This system, also known as strip-cultivation, was dominant in England for over 700 years. All the arable land of a village was divided into numerous strips, held randomly by individuals, each strip measuring about 220 yards long by 11 yards wide. These strips were aggregated into fields, with the same crop being cultivated in each field. Such fields were left fallow – ploughed but not sown – every second, third or fourth year. The animals of the participants were let loose to graze the stubble and weeds of the strips after every harvest, and in the fallow year. The practical purpose of this system may have been connected with making the best use of the arable grazing, and not having to maintain fences.

Strip-cultivation came to an end with the enclosure of land through the mutual agreement of landowners, where to enclose land was to put a hedge or fence around a portion of the open land held in common, and thus prevent the exercise over it of common grazing and other rights. This process began during the 16th century, and accelerated with the Enclosure Acts between 1720 and 1840.

Each of these small(er) enclosures required a name. A very small selection includes *croft*, as at **Goosecroft**, Purley, where the plot probably adjoined a dwelling. Within an open field, it was often used to refer to the small-scale cultivation of a particular crop, as at **Wheat Croft**, Pangbourne, and **Grasscroft Coppice**, East Garston, or to the animals enclosed there, as at **Bull Croft**, Wallingford. A *camp*, as at **Camp Close**, Newbury, was ‘an enclosed piece of ground’. *Pightle*, a ‘small enclosure’, was frequent in the area, for example in 1840 associated at Pangbourne with a cooper at **Coopers Pightle**, and clearly located at **Lyfords Lane Pightle**. The awkward-sounding variant *piddle* appears in names like **Church Piddle**, Tilehurst, and **Home Piddle**, Englefield. The land at **West Inhams Plantation**, Pangbourne, *Inholmes in 1548*, had probably only recently been enclosed. I could go on – and on, because such terms are numerous. It was in these linguistic circumstances that *feld* was reduced in scope to the modern field.

A very useful resource in studying field names is the Tithe Awards of the 1840s. The payment of the tithe, ‘one tenth (*teogotha*)’ of one’s produce in kind to the church to support the local priest, was established in Anglo-Saxon England, and the collection of the tithe is echoed in such buildings as the 17th century **Tithe Barn** at Purley and the **Dining Hall** at Bradfield College, both barns having been moved to their present location from elsewhere. Over time the right to receive the tithe was on occasion acquired by a monastery, college or private landlord, and payment in kind was sometimes not convenient for either the farmer or the tithe owner. The Tithe Commutation Act of 1836 established a procedure whereby tithes could be converted into money payments, but this required an accurate map showing all the land in a parish, including individual fields and often, to the joy of modern students of the subject, their names. A copy of the Tithe map for our area, dated 1840, is held at the County Record Office in Reading.



Bradfield College Dining Hall.

John Haggarty at the Sulham Estate has given me a map of the estate with the modern field-names, and it is interesting to compare these with the Tithe Award names of 180 years ago. Some are virtually unchanged, like **Sandy Furlongs** (*Sandy Furlong* in 1840) and **Churchams** (*Church Hams* in 1840, and meaning ‘enclosures by the church’), but others are a record of history. **Workhouse**, now a plantation north-west of Nunhide Farm, recalls Frenche’s Workhouse, of which only rubble now remains. It is said to have been called after its 14th century tenant *William le Frenche*, who must have been very noticeably from across the Channel.

Sometimes the change of name has led to a modern name that is more immediate. Down Field, shown in the Tithe Award as being to the east of the Recreation Ground and bisected by the railway, is now simply **Railway**. South of Sulham Farm, what must have been a lime kiln at Kiln Pightle (‘enclosure’) in 1840 now records a WW2 **Pillbox**, and on the high ground to the west of Denefield School the modern name recalls a **Searchlight**, so much more evocative than the Lewdham Close of 1840.

The theme of modern history is reflected too in **Sheffield Close**. Together with its Tithe Award name in 1840 of **North Church Field**, these two names cover the full linguistic history of *feld* in England. This history is also fully covered whenever members of Sheffield United or Sheffield Wednesday appear on a football field – but they are rather unlikely to be aware of the fact.

Nigel Suffield-Jones

If you would like to know about the possible meaning(s) of your Family name and/or First name, contact me at nsjnames@gmail.com.



"Lafford & Leavey, experts in bringing the outside - inside"

Windows - Doors - Conservatories UPVC or Timber

One of the leading window, door and conservatory installers in Berkshire, offering free quotations and advice from a company with a formidable reputation spanning 50 years. Choose from a wide range of products in a style and finish which will suit your budget and needs, we are only a phone call away.



LAFFORD & LEAVEY LTD

ARROWHEAD ROAD, THEALE, READING, RG7 4AZ

Tel: Reading (0118) 9303333 Fax: (0118) 9323707

Email: info@laffordandleavey.co.uk



SPB STONWORKS LTD



Tel: 01189371827 or 07971881504

Visit us @ www.spbstoneworks.co.uk

Email: simonbeale@spbstoneworks.co.uk or admin@spbstoneworks.co.uk

Special offers on all types on memorials from Headstone, Full memorials, Cremation stones, Childrens memorials & Vases
FREE NO OBLIGATION QUOTES and FREE FULL COLOUR BROCHURE ON REQUEST



- MONUMENTAL STONE MASONS.
- SUPPLYING ALL TYPES OF MEMORIALS & HEADSTONES
- 30 YEAR GUARANTEE ON ALL NEW & REPAIR WORK
 - MEMBERS OF BRAMM, NAMM, AND THE GUILD OF MASTER CRAFTSMEN
- RENOVATIONS & CLEANING OF EXISTING MEMORIALS
 - ADDITIONAL INSCRIPTIONS ALL STYLES
 - REPAIRS & RE-LEVELLING
- FAST & FRIENDLY FAMILY RUN COMPANY



**Up to 70% Cheaper than Funeral directors
with 100% Guarantee to beat any memorial quote**

Showroom by appointment

Unit 3 Old Mill Trading Estate, 61 Reading Road, Pangbourne RG8 7HY



COUNTRY ROOFING SUPPLIES

All you need under one roof

Visit us at
Timbers Farm, Henley-on-Thames RG9 5SY

Call us on 01491 641024

www.countryroofingsupplies.co.uk

Duncan Agar Painter and Decorator

- Highly Experienced, Professional Tradesman
- All Aspects of Interior and Exterior Decorating
 - Traditional and Modern Finishes
 - Period Properties a Speciality
 - Free Quotations and Advice
 - References Available

Tel: 0118 971 2340
& 07787 552 983

PERSONAL TAX RETURNS

Contact Geoffrey Cole
Geoffrey Cole & Co

Chartered Accountants & Registered Auditors

4 Reading Road Pangbourne Berkshire RG8 7LY

Telephone 0118 984 1556 Email post@geoffreyc Cole.co.uk

www.geoffreyc Cole.co.uk



PANGBOURNE AND WHITCHURCH SUSTAINABILITY NEWS

We have entered the New Year still with COVID snapping at our heels which resulted in a chilly Covid-safe Planning Meeting in Pangbourne Village Hall in January. At least with the doors and windows open and no heating we were not wasting energy, but rather creating an energy of ideas to keep warm!

Chaired by Jackie Hoskins who has so ably led PAWS for the last few years and attended by 12 members representing both Pangbourne and Whitchurch the group reported back on ongoing areas of interest and proposed ideas for the coming year. Our aim as always is to keep the issue of Climate Change and sustainable living at the forefront of everyone's mind and our mandate continues to be to promote biodiversity, encourage energy saving, buying local, sustainable travel, renewable energy generation and the reduction, reuse and the recycling of waste.

PLANS FOR 2022

March 13 will be another day of tree planting to celebrate the Queen's Platinum Jubilee. A member of PAWS has two hundred saplings ready for planting. 'Future for UK Treescapes' has identified gaps in tree cover in Whitchurch.

A talk on water pollution, in particular the quality of the water in the River Pang, will take place in March/April. Please keep an eye on PAWS' Facebook page for details.

There is a proposal to visit Earth Trust, a 4000 acre site with two miles of river frontage, Little Wittenham, near Didcot. The Trust has established wide field margins for biodiversity, uses coppicing in rotation and works with derelict medieval ponds.



There is also a proposal to visit Reading Hydro, which is now operational and is open for visits.

We will join in the annual litter picking days in both Pangbourne and Whitchurch.

PAWS will be hosting a coffee morning at the Art Café on Saturday May 21. All are welcome.

The annual Wothabs organic meadow walk will take place on Sunday 12 June in Whitchurch.

The annual apple pressing event will take place at the Maze in Whitchurch on September 25. This is a magical day for families producing apple juice from local apples and enjoying a lovely community atmosphere.

Alongside events other initiatives are taking place. Kat Syfret of PAWS has produced a booklet on the variety of plants growing along Pangbourne's footpaths and the support they give to wildlife. See her article on the Biodiversity of Pangbourne's footpaths in this edition of the magazine.

Sally Woolhouse has reproduced the Tree search and identity leaflet used in last year's quiz and it will be available in Garlands and the Library. This provides a focus for a very good family walk on both sides of the river and the fun of learning how to recognise different trees growing in our local area.

Barbara Singleton Crisp and the Active Travel group continue to work with West Berks and Purley

Sustainability group around the issues of safe cycling, and improved routes. They are in discussion with landowners and West Berks about the creation of a cycle route along Purley Rise. Cycle racks at both the rail station and outside the Co-op will hopefully encourage more people to use their bikes rather than cars when coming into the village. There was a good response to the cycle survey, main concerns being safety and infrastructure. Concern over speed limits has been expressed and it is interesting to see that a 20 mph zone for Whitchurch has been announced. West Berks encourages people to use their site, 'Report a Problem' to lobby for speed reduction and to express concern over overgrown paths which make walking for pedestrians difficult.

Finally, fed up with junk mail? Did you know that you can opt out of receiving it? If you go on the Royal Mail website and look for 'How do I opt out of receiving leaflets or unaddressed promotional material' you can fill in a form which can take four to six weeks to process, but should lower the amount of waste paper coming through your letter box.

A full programme of events will be available on our Facebook page and in the next magazine. By then we hope that COVID will be in true recession and we can enjoy our events without restrictions.

Heather Thorne

2022 PAWS CALENDAR		
WHEN	WHAT	WHERE
Sunday 13 March	Tree Planting	Whitchurch, TBA
Saturday 21 May, 10.30-12.30	PAWS at the Art Café	Old Stables, Whitchurch
Sunday 12 June	WOTHabs organic meadow walk	Hardwick, Whitchurch

Visit our website www.pawsg.com
and join our Facebook group: PAWS (Pangbourne & Whitchurch Sustainability)



PAWS FOOTPATH PLANT AND WILDFLOWER GUIDE FOR PANGBOURNE

Last year at the biodiversity group meeting on 15th July 2021 Kat Syfret proposed that we encourage the preservation and appreciation of bio-diversity in Pangbourne by producing a guide to the wildflowers, and self-sown garden plants and trees growing on the **footpaths in Pangbourne**. The guides, in the form of folding leaflets, could be placed in Perspex holders mounted on the fences or placed in the local shops in the village, or the library to show the great variety of plants that can be found growing along village footpaths, their value, interest and origin, and usefulness of the plants to birds, insects and people.

The footpaths to be surveyed and illustrated are:

1. Polytechnic Lane: that's the path that leads from Reading Road to Horseshoe Road.
2. The path from Horseshoe Road to Graham Avenue that runs between Horseshoe Park (The Light Industrial Estate) and St Bernadette' Catholic Church up to the allotments.
3. **The Moors** footpath – it runs up to the River Pang meadows, behind Meadowside Lane from the end of The Moors.
4. Chiltern Walk
5. The path beside the Elephant that runs to the Village Hall.
6. The path beside the now redundant Fire Station that runs to Meadowside.
7. **Piggy Lane** – The Path that runs from Reading Road to Meadowside that now has Shephard's Place forming one side of it, and the back Gardens of Orchard Place.



Photo taken on 21st May 2021 showing weedkiller has been used beside a fence

PAWS hopes that this will Encourage Bio-diversity; the Parish Council has already made a great start with tree planting for the Jubilee. However, if the following changes to the maintenance on these paths were put into practice, their bio-diversity would be much improved.

1. **Allowing the plants to set seed** before cutting or slashing back wildflowers along the footpaths. Queen Anne's Lace looks wonderful lining either side of the Moors path in May and June, as does flowering ground elder!
2. **Stop or reduce footpath maintenance contractors and volunteers from using weedkiller.** Glyphosates and other weedkillers and insecticides 'run -off' is poisoning our rivers and watercourses, and the environment.
3. **Minimise the use of strimmers** which decapitate and injure frogs and toads that live in the damp vegetation in the margins of these paths. Frogs & toads are endangered species. Strimmers can be polluting and noisy. Scythes, secateurs and long handled shears are silent and emit no fumes or noise.
4. **Collect and rake up heaps of scythed or trimmed vegetation.** Vegetation left to rot over -fertilises the ground and encourages over growth of nettles and docks. Compost heaps of the cuttings are an excellent habitat for slow -worms, which eat slugs
5. **Lessen the urban heat effect by letting climbers grow. Brick walls, wooden fences, and corrugated iron ones absorb heat during the day, and release it at night, like storage heaters, and contribute to global warming.** By leaving climbing plants like ivy, honey suckle, roses and native clematis (Traveller's Joy) or Virginia creeper* growing on fences and walls this heat effect is mitigated, and provides nesting sites and food for birds and insects, and makes the village much more attractive.
6. **Wildlife corridors.** Our footpaths are vital 'wildlife corridors', providing links with the countryside, gardens and greenspaces for animals like hedgehogs and amphibians, as well as birds and other mammals, in addition to their being traffic free routes for humans.

**A good example of this can be seen in The Moors and the wall of a garage, which is covered in Virginia Creeper.*

Plants to be seen in Polytechnic Lane:

Green Alkanet (*Pentaglottis Sempiverens*); a large leaved plant with small blue flowers, related to Borage and comfrey. All bees love it, especially Mason bees (Mason Bees are solitary bees that nest in holes in the stems of dead plants and do not suffer from Varroa, a disease that afflicts honey bees, and so are valuable for pollinating fruit trees and flowers. Monks in the Middle Ages used to dye white wine red with it. It was brought here from the Middle East, hence its name 'Alkanet', which is Arabic for henna . . .



Pentaglottis Sempiverens

LOCKSMITH **ACG SERVICES** 

Locks changed, fitted, repaired & opened.
Yale locks, five lever mortice locks, digital locks,
UPVC door locks & handles, UPVC window locks.

Emergency callout service

Over thirty years of experience. Free quotations
Tel: **01491 682050** or **07710 409216**
www.acgservices.co.uk

Office: 3 Wayside Green, Woodcote, Oxon RG8 0PR. Proprietor Richard Homden

DRAIN & ABLE 

Independent Drainage Service
24/7 EMERGENCY SERVICE
GUARANTEED ARRIVAL
ALL TELEPHONE CALLS ANSWERED PERSONALLY
Call anytime on 0118 957 6244/
07795 598207
www.drainandable.co.uk

Cleaver Cars Ltd
Independent Citroën Specialist

◆

Servicing, repairs and MOTs
All makes and models

◆

Free local collection
and delivery service

◆

Tel. 0118 957 6405
67 Loverock Road
Reading, RG30 1DZ

Email: cleavercars@btconnect.com
www.cleavercars-reading.co.uk

CIG.

Chiltern Insurance Group
Pangbourne

Business and Personal Insurance
from your Local Broker

Call 0118 984 3355
www.chilterninsurance.co.uk

St James House, Church Road,
Pangbourne, RG8 7AR

Chiltern Insurance Consultants Ltd are authorised and regulated by the Financial Conduct Authority for General Insurance Business.

A . B .

WALKER
THE FUNERAL PEOPLE

A FAMILY BUSINESS SINCE 1826
THATCHAM – 01635 873672
TILEHURST – 0118 304 0068
READING – 0118 957 3650

ALSO AT BRACKNELL, CAVERSHAM,
HENLEY, MAIDENHEAD, WOKINGHAM.

TRADITIONAL AND CONTEMPORARY
FUNERAL SERVICE AND DIRECT CREMATION
FLORAL DESIGN AND MONUMENTAL MASONRY
PRE-PAID FUNERALS, LATER LIFE LEGAL SERVICES
BEREAVEMENT CARE

WWW.ABWALKER.CO.UK

Golden Charter 
Funeral Plans 



Photo taken 31st July 2021



Wilting Green Alkanet – (Weedkiller) 21st May 2021

Sweet Violets (*Viola odoratum*) – They may have disappeared due to disturbance as a lot of new fencing has been put up on the past year. It may be possible to transplant some. Violets and primroses seeds are spread by ants. Bees rely on them for nectar and pollen in spring.

Herb Robert (*Geranium robertianum*) – A wild geranium, with a small pink flower. It was thought to be a healing herb, (supposed to be antiseptic, cure nosebleeds, stomach upsets, and the leaves were used to make tea. Useful for bees, hover flies and the Barred Carpet moth. (NB the Barred Carpet moth lives in woodland, and is nothing to do with soft furnishings, despite its name!)

Queen Anne’s Lace or Cow Parsley (*Anthriscus Sylvestris*) – this looks lovely, foaming white umbelliferous flowers, an excellent source of pollen and nectar for various beetles and hoverflies, insects which are an essential food for many types of bird.

Buddleia or Buddleja (*Buddleja Davidii*). The Butterfly Bush; introduced to Britain from the New World and China, and named after the Rev. Adam Buddle. Butterflies thrive on it.



Buddleia and lush vegetation Polytechnic Lane, 31st July 2021

There are so many more plants, trees and mosses to be appreciated on our doorsteps.

It is proposed that we do a monthly walk to see and list what is growing along the footpaths each month, beginning on January 24th. If anyone would like to help with the survey, the listing and the photography to help us produce the leaflets, I would be delighted to hear from you.

Please contact Kat Syfret via the PAWS email: pawsg21@gmail.com



FAMILY TREE
 GROUNDS MAINTENANCE AND CONSTRUCTION
Garden Maintenance

- Fencing • Gates • Hedge cutting
- Decking • Patios • Grass cutting

TEL. 07736 650 477
 email.familytreegmc@gmail.com



andrea newill
 GARDEN DESIGN

Beautifully designed gardens by experienced, qualified, local garden designer

Andrea Newill MSGD
 info@andreanewill.co.uk www.andreanewill.co.uk
 07901 856408 0118 9710450




Garlands for high quality food and much more.

Seeds, nuts and grains | Sustainably caught fish | Organic fruit and veg | Artisan bread | Dairy & Non-dairy chilled foods | Speciality and “Free from” foods | COOK remarkable food for your freezer | Local beer | Organic wines | Health supplements | Natural Cosmetics | Eco-friendly household products | BOODY bamboo clothing | Candles | Essential Oils | Loyalty scheme

6 Reading Road, Pangbourne, RG8 7LY
 0118 9844770 orders@garlandsorganic.co.uk
 garlandsorganic.co.uk

Plumber & Bathroom fitter

From Dripping Taps to Complete Bathroom Design and Installation.

Full Quality Refit, all Tiling, Construction, Alterations etc, from start to finish.

Free Advice and Quotes. Friendly, Reliable and Insured.

Happy to undertake the smallest of jobs

**Richard – 0771 333 6661
or 0118 9676384**
(answering machine)



Perfect Boundary Limited



Hard Landscaping and Design.

Approved Installer of Marshalls Products and addagrip Resin Bound Products.

Professional Service. Call for a Quotation.

info@perfectboundarylimited.co.uk

Tel: 0118 9968 009 / 07796 202217

www.perfectboundarylimited.co.uk



- Tree Surgery
- Tree Felling
- Hedge Cutting
- Logs
- Fencing
- Fully Insured
- Fully Qualified
- Free Quotations
- 24 Hour Callouts
- Competitive Prices



01488 647204 07979 507 195
robfox@foxestreeservices.co.uk
www.foxestreesurgery.com

Local business based in Newbury



BUILDING, CARPENTRY AND HOME IMPROVEMENT SPECIALISTS
ALL WORK GUARANTEED
OVER 15 YEARS EXPERIENCE

- EXTENSIONS
- ALTERATIONS
- RENOVATIONS
- EXTERNAL DECOR
- CONVERSIONS
- KITCHENS/BATHROOMS
- PATIOS/DRIVES
- LISTED BUILDING WORKS

ALL ASPECTS OF BUILDING WORK UNDERTAKEN
FULLY INSURED - REFERENCES AVAILABLE

0118 9845959 0791 7095379

Coombe House

RESIDENTIAL CARE

- Retirement home in Streatley on Thames
- 24 hour care and support by well qualified staff
 - Elegant, homely and relaxed country house in attractive grounds
 - Peace, privacy and independence in caring surroundings
 - Serving the local community for over 30 years



01491 872174 www.coombehouse.co.uk enquiries@coombehouse.co.uk





PANGBOURNE PARISH COUNCIL

Tel: 0118 9841118 Email: clerk@pangbourne-pc.gov.uk Website: www.pangbourne-pc.gov.uk

DATES FOR YOUR DIARY

ANNUAL LITTER PICK DAY – Sunday 3rd April 2022 10am-2pm

The date for the Annual Litter Pick has been set. Once again, a dedicated group of volunteers, Councillors and PAWS are helping to run the event and everyone is welcome to come along and support this worthy event and keep our village litter free!

Litter pickers, gloves and all equipment will be provided. We are hoping for a repeat of the last time we ran the event pre pandemic when the sun shone gloriously and we had a great turn out. Families and volunteers of all ages are welcome.

Just turn up on the day at Pangbourne Recreation Ground or Chiltern Walk to collect your kit and be assigned an area. We would particularly welcome anyone who can help organise the day so please do contact the Clerk on Clerk@Pangbourne-pc.gov.uk in advance if you would like to be involved.

ANNUAL PARISH MEETING – Tuesday 26th April 2022 From 7pm

HAVE YOUR SAY AND BE INVOLVED!

The Annual Parish Meeting will return to the Village Hall again this year after last year's successful event online.

Doors open at 7.00pm and the Meeting commences at 7.30pm. Refreshments will be available from 7.00pm onwards.

The meeting is open to ALL RESIDENTS of Pangbourne and we hope to see as many of you as possible on the night. For those who have never been before, this is a meeting of and for the residents rather than a normal Council meeting. It is your opportunity to hear updates on what local groups and the Parish Council are working on and to find out how to get involved. It is also a chance to have your say or share ideas! The Millennium Award for 2022 will also be presented (see separate nomination form). We would love to see as many people there as possible, so please make a note in your diary! If you would like to present on behalf of a group or project please contact the Clerk so that we can schedule you in.

MILLENNIUM AWARD 2022

The Millennium Award returns this year having been unable to be awarded during the pandemic. It will be presented at the Annual Parish Meeting on **TUESDAY 26th APRIL 2022.**

This is a really exciting opportunity to vote for residents or groups who have made a significant contribution to the Village. Since the last presentation in 2019, we know

there will be many worthy candidates who have helped to make a difference throughout the pandemic and to the life and people of the community. It would be lovely to see nominations by and representing all age groups and interest groups and organisations in the village. Please see the separate form and information on how to nominate elsewhere in this issue. Nominations close on Friday 1st April 2022 and should be returned to the Clerk at the parish office .

PARISH PRECEPT 2022/2023

BUDGET	£306,974
PRECEPT	£127,874
BAND D PER YEAR (approx.)	£80.19
BAND D PER WEEK (approx.)	£1.54
INCREASE	2.6%
INCREASE	4p pwk

The Parish Precept is the amount collected by West Berkshire Council on behalf of Pangbourne Parish Council from local residents in order to deliver services within the Parish of Pangbourne.

This year's Precept for 2022/23 has now been set at **£127,874**, although the total Expenditure Budget for the council for the year is higher **£306,974**. The remainder of the funds required to meet this budget are made up of other income from the Village hall and amenities plus other sources of funding and the monies apportioned to the Council as Developers Contributions (CIL funding). The parish council will also be spending from reserves. Currently the Council is in receipt of a significant amount of CIL, although this fluctuates from year to year depending on what development takes place.

CIL monies are apportioned to be spent on restricted activities related to delivering infrastructure and it is planned to deliver a number of large projects around the village over the next year.

The Precept equates to an average **£80.19 for a BAND D Property or £1.54 per week** although actual bills may vary slightly. This is an increase of **2.6% or 4p per week.**

PARISH COUNCIL GRANT AWARDS 2022/23 YEAR

The Parish Council have limited funds available each year for grants to groups, charities and organisations within the Parish that meet certain criteria.

The Parish Council would like to invite applications for 2022/23 Financial Year from local groups that meet these criteria to fund projects for the benefit of the residents of Pangbourne.

Applications should be received by **1st April 2022**, although it is possible that applications received after this date may be considered in a second round of grants in September if there are funds remaining.

COUNCIL NEWS

Please see the website or email the Clerk on clerk@pangbourne-pc.gov.uk for further information or an application form.

In 2021/22 Year the Parish Council was able to help fund a number of projects including new play equipment for Pangbourne Valley Playgroup's garden refurbishment and support for the continued operation of the Public Toilets at Station Road Carpark as well as a number of smaller charities.

The Council continues to provide funds to support both the local Bus Service and the Library.

QUEENS GREEN CANOPY

Following on from the successful community tree planting event last October, a number of smaller tree planting events are being arranged throughout the year as part of the Queen's Green Canopy.

Please do contact the Clerk or one of the parish Councillors if you would like to take part.

MILLENNIUM



AWARD 2022

DO YOU KNOW OF
AN UNSUNG HERO IN PANGBOURNE?

SOMEONE WHO VOLUNTEERS TIRELESSLY
OR GOES THE EXTRA MILE TO HELP OTHERS
OR DELIVER PROJECTS?

SOMEONE WHO SUPPORTS YOUTH SERVICES,
SPORTS CLUBS AND FACILITIES, ADULT SOCIAL CARE,
PLAYGROUP, CHURCH GROUPS, SCHOOL SERVICES
OR RUNS A CLUB OR SOCIETY?

HAS ANYONE DRIVEN A PROJECT OR RUN A CAMPAIGN
TO IMPROVE THE VILLAGE OR LOCAL AREA?

IF SO, THEY DESERVE YOUR VOTE.

Pangbourne Parish Council are pleased to be able to announce that nominations are once again open for the **Millennium Award**. The winner of the 2022 award will be presented with Award Bowl at the Annual Parish Meeting on **Tuesday 26th April 2022**.

The **Millennium Award** is awarded to a variety of groups and individuals, in recognition of their contribution to the village, either through their work or voluntary activities. No one individual or group is allowed to win for a second time.

Please fill in the nomination form below and post/drop it in to the Parish Office at the Village Hall, Attn Clerk, Pangbourne Parish Council, Parish Office, Pangbourne Village Hall, Pangbourne RG8 7AN or email the Parish Council on clerk@pangbourne-pc.gov.uk, to arrive no later than **Friday 1st April 2022**.



MILLENNIUM AWARD

I would like to nominate: _____

Contact information of nominee (if known): _____

I feel that they should be given the Pangbourne Millennium Award because: _____

My name is: _____

(It is not essential to give your own name if you would rather not)

BLOSSOM INTO SPRING – TREE PLANTING

We were very fortunate to have been gifted four semi-mature Tai Haku flowering cherry trees by West Berkshire Council in December as part of their Blossom into Spring project as a way to mark the pandemic within local communities. These have been planted with the very generous help, blood sweat and tears of local residents, PAWS volunteers and Councillors over a muddy afternoon in December! In addition, the Parish Council also installed two new picnic benches next to the playground to provide an area for families using the amenities. It is hoped that more benches will be placed here in the months to come if successful. Hopefully as the trees mature and develop this should provide some much needed shade for this much loved area.



PLANNING APPLICATIONS SINCE LAST ARTICLE

REVIEWED BY THE PARISH COUNCIL			DETERMINED BY WEST BERKS COUNCIL		
APP NO:	PROPOSAL	RECOMMENDATION	APP NO:	PROPOSAL	WBC DECISION
21/03035/ COND1	Application for approval of details reserved by condition 4-Arbicultural Watching Brief and condition 5-Tree Protection Scheme of approved application 21/01103/HOUSE 3 Croft Drive, Pangbourne	NOT CONSULTED	21/03148/ NONMAT	Non material amendment to approved 19/02826/HOUSE – Garage conversion, new pergola and replacement driveway. Amendment – Amend height of car port roof apex to increase this by 40cm to 2.9m. 24 Horseshoe Road, Pangbourne RG8 7JQ	APPROVAL
21/03148/ NONMAT	Non material amendment to approved 19/02826/HOUSE – Garage conversion, new pergola and replacement driveway. Amendment – Amend height of car port roof apex to increase this by 40cm to 2.9m. 24 Horseshoe Road, Pangbourne RG8 7JQ	NOT CONSULTED	21/02733/ HOUSE	Erection of side extension, replacement window to existing house and installation of outdoor swimming pool; with associated landscaping. The Old Coach House, Bere Court Road, Pangbourne RG8 8JU	APPROVAL
22/00056/ FUL	First floor extension to building with mansard roof. Minor alterations to permitted scheme shell including new and altered window positions. Land and Stores Building, Tidmarsh Road, Pangbourne	NO OBJECTION	21/02817/ HOUSE	Side Extension 40 Horseshoe Road, Pangbourne RG8 7JH	APPROVAL
22/00105/ HOUSE	Porch and main entrance replacement, Internal layout changes (same number of bedrooms retained, new en-suites added within existing footprint) New/enlarged windows (total 7 windows to be affected) New feature glazing/door to patio 2 New rooflights Disused chimney breast removed – Patio raised – New external finish – white render Fairbanks, Riverview Road, Pangbourne RG8 7AU	NO OBJECTION	21/02893/ HOUSE	Erection of driveway gate 41 Shooters Hill, Pangbourne RG8 7EA	APPROVAL
21/01289/ OUTD (original application) APP/W0340/ W/21/3287670 (appeal)	APP/W0340/W/21/3287670 Appeal against decision to refuse: Application for Outline Planning Permission With Some Matters Reserved: Erection of 4no new dwellings at Land Rear of Wakemans. Matters to be considered: Access and Layout. Land at Wakemans, Upper Basildon	OBJECTION	21/02894/ LBC2	Erection of driveway gate 41 Shooters Hill, Pangbourne RG8 7EA	NOT REQUIRED
22/00208/ HOUSE	Demolition of existing garage. Single storey side/rear extension consisting of garage, utility room, kitchen and dining room, porch and ensuite front extension 139 Bourne Road, Pangbourne RG8 7JT	NO OBJECTION	21/03042/ HOUSE	Single storey rear extension 34 Purley Way, Pangbourne RG8 7JY	WITHDRAWN
			21/03035/ COND1	Application for approval of details reserved by condition 4-Arbicultural Watching Brief and condition 5-Tree Protection Scheme of approved application 21/01103/HOUSE 3 Croft Drive, Pangbourne	APPROVAL

USEFUL NUMBERS

USEFUL NUMBERS

POLICE	Non-emergency number	101
CRIMESTOPPERS		0800 555 111
PANGBOURNE PARISH COUNCIL (at Village Hall)		
	www.pangbourne-pc.gov.uk	0118 984 1118
	Parish Office opening hours – Mon am, Tues am, Thurs pm	
CHAIRMAN OF PANGBOURNE PARISH COUNCIL		
	Peter Maclver – peterpangbourne@gmail.com	07768 004844
VICE CHAIRMAN OF PANGBOURNE PARISH COUNCIL		
	John Higgs – jhiggs@pangbourne-pc.gov.uk	0118 984 4758
CLERK TO PANGBOURNE PARISH COUNCIL		
	Becky Elkin – clerk@pangbourne-pc.gov.uk	0118 984 1118
WEST BERKSHIRE COUNCIL		
	Switchboard	01635 551111
CITIZENS ADVICE BUREAU		01635 516 605
MP FOR READING WEST		
	Alok Sharma	0118 941 3803
SURGERY		0118 984 2234
	Emergency out-of-hours (6.30pm – 8am)	111
PHARMACY		0118 984 2935
LIBRARY		0118 984 4117
PANGBOURNE AND DISTRICT VOLUNTEER CENTRE		0118 984 4586
PANGBOURNE PARISH PRIEST		
	Reverend Mark Hopkins – rector.ptschurches@gmail.com	0118 984 2928
FLOOD WARDENS		
	Kay Lacey	07889 231136
	Stephen Billyeald	0118 984 3368
	Ed Penney	07756 432946

Monumental & Masonry Craftsmen

Family run business since 1858

A.F. JONES
33 Bedford Road
Reading
RG1 7EX

Tel: 0118 9573537

email
info@afjones.co.uk

E.T. SHEPPARD
36 Reading Road
Henley on Thames
RG9 1AG

Tel: 01491 574644

email
info@etsheppard.co.uk

**Specialists in all stonework
Memorials, Restoration, Kitchens, Bathrooms**

MADE TO MEASURE

*Curtains, Roman Blinds,
Cushions Covers, etc
at competitive prices.*

Call Caroline on
(0118) 9542448
or 07815 610 007



individual
conservatories
and orangeries
by **Malbrook**



please contact us to arrange a design consultation

TEL: 020 8780 5522 • EMAIL: info@malbrook.co.uk

www.malbrook.co.uk

ELECTRICIANS

Aylett Electrical

Kevin Aylett – your local, reliable, fully qualified and insured, domestic electrician.

0118 9302037

Mob: 07986 033 051

FUNERAL SERVICES

A B Walker

See main advert on page 52.

Thatcham – 01635 873672

Tilehurst – 0118 304 0068

Reading – 0118 957 3650

GARDEN SERVICES

MOLES? Are they ruining your lawn?

Call MoleMan Mark to get rid of them.

British Mole Catchers Register accredited.

07887 480014

JEWELLERY REPAIRS

Sandy Ebdon-Jackson B.A.

Re-stringing, re-designing, replacing lost parts etc.

Please message description and photo of required repair for quote.

07789 238557

LAUNDRY/DRY CLEANERS

Launderclean

4 Station Road, Pangbourne.

Launderette and dry cleaners.

0118 984 2197

PAINTER

Andy The Painter

Interior and Exterior Painting.

Fully Qualified and Insured.

07933 266874

andyblack007@outlook.com

PLUMBER & BATHROOM FITTER

Happy to undertake the smallest of jobs.

Call Richard.

0771 333 6661

0118 967 6384

PROPERTY MAINTENANCE

Duncan Agar

All aspects of maintenance including gutter cleaning

and repairs, broken glass, painting, etc.

0118 9712340

07787 552983

Aylett Electrical



Kevin Aylett – your local, reliable, registered and insured electrician.

- Domestic installations
- Testing and repair
- Free quotes and advice
- All maintenance and repairs undertaken

Blossomsend Cottage Blossom Lane Theale RG7 5BE

Tel: 0118 9302037 Mob: 07986 033 051



Car issues?

Talk to us,
we're listening

FREE

local collection &
delivery service

The Office Team at PR Motors

Email: enquiries@prmotors.biz Web: prmotors.biz

Tel: **0118 984 4889**



Opening times: **Mon-Fri: 7:30am - 5:30pm**