

# Select a Broth base

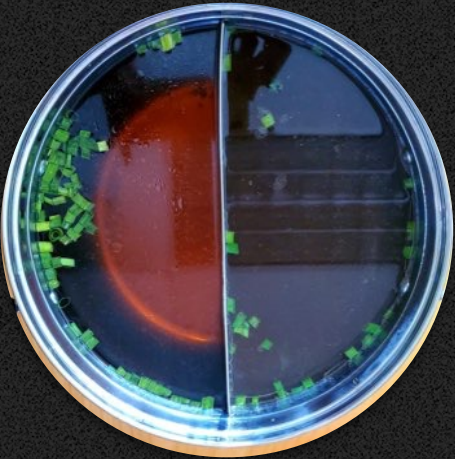
- \*\*\*\*House Broth.....IO  
Chicken, pork, celery, onion
- \*\*\*\*Vegetarian Broth.....IO  
Shiitake mushroom
- \*\*\*\*Tom Yum Broth.....IO  
Lemongrass, Kaffir lime leaves, Lime juice
- \*\*\*\*Tom Kha Broth.....IO  
Lemongrass, creamy lime juice  
Kaffir lime leaves
- \*\*\*\*Miso Broth.....IO
- \*\*\*\*Beef Broth.....IO  
Beef bones, onion, celery, star anise  
cinnamon sticks, ginger
- \*\*\*\*Spicy Beef Broth.....IO  
Beef bones, onion, celery, star anise  
cinnamon sticks, ginger
- \*\*\*\*Kimchi Broth.....IO  
Napa Cabbage, radish, daikon  
Korean red pepper flakes

\*\*\*Note \$5.00 each time refills\*\*\*

Kimchi Broth



Shiitake Mushroom Broth



Miso Broth

Beef Broth



Tom Kha Broth

Tom Yum Broth

House Broth



Spicy Beef Broth

Shoyu Sesame Sauce



Ponzu Sauce



Spicy Hawaii Chili Sauce



Kimchi Sauce



Sukiyaki Sauce



Sesame Oil Salt Pepper Sauce



Fresh Chilli Garlic Onion \$2



## Dipping Sauce ( Pick 3 )

- \*\*\*Ponzu Sauce
- \*\*\*Spicy Hawaii Chili Sauce
- \*\*\*Kimchi Sauce
- \*\*\*Sesame oil Salt Pepper Sauce
- \*\*\*Shoyu Sesame Sauce
- \*\*\*Sukiyaki Sauce (Soya Bean Curd )

PROTEIN A LA CART : MAKE TO ORDER



Rib Eye \$13



beef Tri Tip \$10



Pork Belly \$9



Pork Tenderloin \$9



Chicken \$9



Oxtail \$15



Head On Shrimp \$7



Raw Shrimp \$6



Raw Calamari \$6



beef Ball \$5



Tripe \$5



Tendon \$5



Raw egg 2 / \$3



Tofu \$3



Crab Stick \$5



Kamaboko \$5



Ramen \$4



glass Noodle \$3



Napa Cabbage \$3



Quail Eggs \$6



Egg Noodle \$4



Udon Noodle \$4



Chow Mein \$4



Rice Noodle \$3



Broccoli \$3



Button Mushroom \$6



King Mushroom \$7



Enoki \$6



Beech Mushroom \$7



Straw Mushroom \$5



Buk Choy \$4



Bean Sprout \$3



White Onion \$3



Carrot \$3



Baby Corn \$4



Green Bean \$3



Mustard Green \$4  
(Seasonal)



Watercress \$6  
(Seasonal)



Ong Choy \$5  
(Seasonal)



Bamboo Shoots \$3



Kimchi \$4



Mixed Veggie \$10

Note :: for your convenience a gratuity of 18% will be added to parties of eight or more. \*\*\*The consumption of raw or undercooked eggs, meats, poultry, seafood or shellfish may increase your risk of food borne illness in some individuals. Please inform us if you have any food allergies, please lets your server know if you have any questions or need additional information before placing order..... (no refund )..... \$0.25 for take out containers or bag

Online menu visit us @[www.chef.tk.com](http://www.chef.tk.com)