

Grade C
CANTER EPU

INK
CN0438

POLAR BLUE
CN8706

ADOBE
CN8750

TANGO
CN0537

THATCH
CN0559

CHESTNUT
CN8262

SUMAC
CN0526

CITRUS
CN8739

KIWI GREEN
CN8772


NIGHT
CN8306

STORM
CN0515

GRAPHITE
CN8695

ONYX
CN8339

INFORMATION TECHNIQUE


Patron - Largeur	Composition	Endos	Abrasion (D.F.)	Résistance à la lumière	Code de nettoyage
CANTER EPU - 54" 	100 % polyuréthane EPU	Polyester	1 000 000	200 Heures Classe 4	WS Eau de Javel (4:1)

CODE DE NETTOYAGE

- **WS:** Mousse nettoyant à base d'eau.

Plusieurs facteurs tels que le type d'utilisation et l'entretien peuvent influencer la durabilité et l'apparence originale. Les résultats Wyzenbeek dépassant 100 000 doubles frottements n'ont pas démontré être un gage de longévité accrue du produit.

TECHNICAL INFORMATION

Width - Pattern	Content	Backing	Abrasion (D.F.)	Lightfastness	Cleaning Code
CANTER EPU - 54" 	100 % EPU Polyurethane	Polyester	1,000,000	200 Hours Class 4	WS Bleach Cleanable (4:1)

CLEANING CODE

- **WS:** Water-based foam or cleaner.

Multiple factors affect fabric durability and appearance retention, including end-user application and proper maintenance. Wyzenbeek results above 100,000 double rubs have not been shown to be an indicator of increased lifespan.



10871, avenue Salk
Montréal-Nord
(Québec) Canada
H1G 6M7

bouty.com

Échantillons disponibles via
Memo samples are available from

MOMENTUM
T E X T I L E S

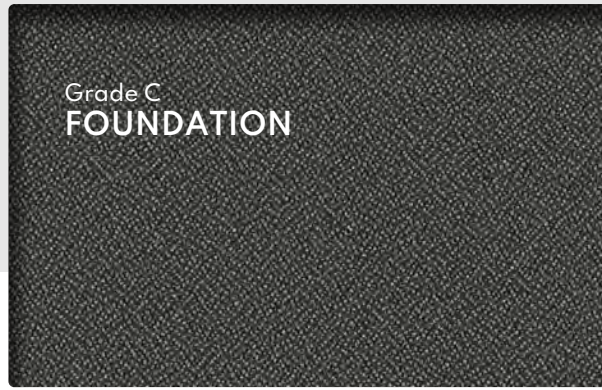
memosamples.com | 800.366.6839



3450, 1re Rue
Saint-Hubert
(Québec) Canada
J3Y 8Y5

adi-artdesign.com

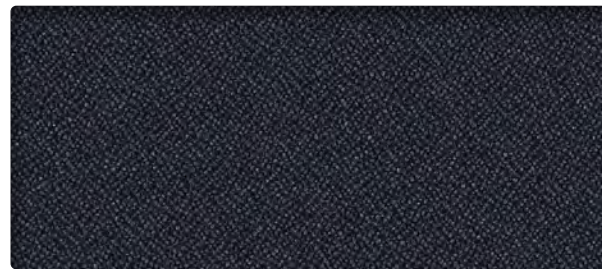
Grade C
FOUNDATION



FN-GRAPHITE
026



FN-EBONY
006



FN-NAVY
014



FN-FLAME
011



FN-PEACOCK
043

INFORMATION TECHNIQUE

Patron - Largeur	Composition	Finis	Abrasion (D.F.)	Résistance à la lumière	Code de nettoyage	Fournisseur
FOUNDATION - 54" 	100 % Polyester recyclé (65 % pré / 35% post-consommation)	Antitache	165 000	40 Heures Classe 4,5	W	MAYER

CODE DE NETTOYAGE

- W: Utiliser un agent nettoyant à base d'eau ou de mousse.

TECHNICAL INFORMATION

Width - Pattern	Content	Finish	Abrasion (D.F.)	Lightfastness	Cleaning Code	Supplier
FOUNDATION - 54" 	100 % Recycled Polyester (65 % Pre / 35 % Post-Consumer)	Soil & Stain Resistant	165 000	40 Hours Class 4,5	W	MAYER

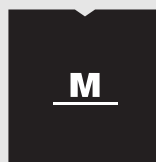
CLEANING CODE

- W: Use water-based or foam cleaning agent.



10871, avenue Salk
Montréal-Nord
(Québec) Canada
H1G 6M7

bouty.com



MAYER FABRICS

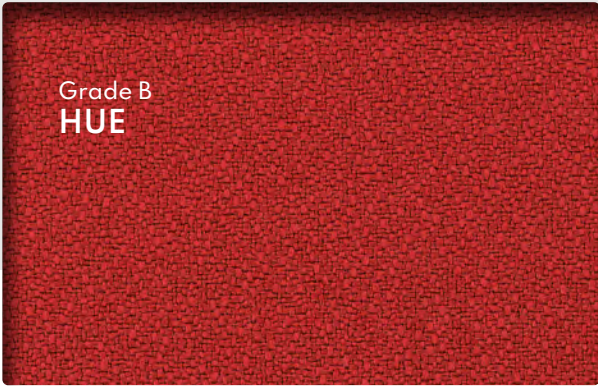
TF 800.428.4415



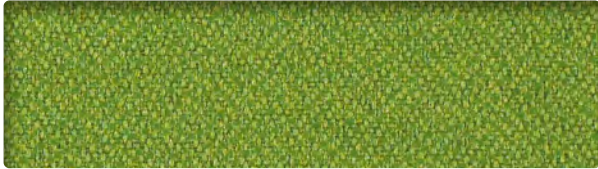
3450, 1re Rue
Saint-Hubert
(Québec) Canada
J3Y 8Y5

adi-artdesign.com

Grade B
HUE



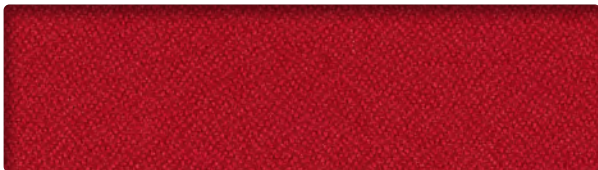
SALSA
HU226



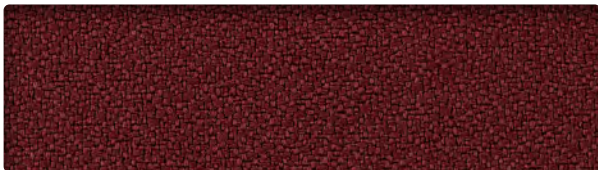
STEM
HU236



FROTHE
HU213



HIBISCUS
HU232



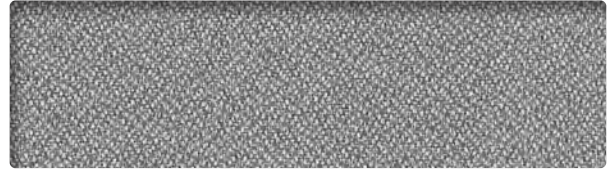
CURRENT
HU216



SHADE
HU235



CHAR
HU219



QUARRY
HU233



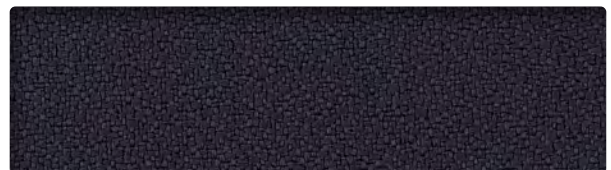
SMOKE
HU231



SEAPORT
HU234



NIGHT
HU220



INDIGO
HU228



BLACK
HU222

INFORMATION TECHNIQUE

Patron - Largeur	Composition	Finis	Abrasion (D.F.)	Résistance à la lumière	Code de nettoyage
HUE - 54" 	65 % polyester recyclé post industriel 35 % polyester recyclé post consommation	Latex	1 000 000	60 Heures Classe 4,5	WS

CODE DE NETTOYAGE

- **WS:** Utiliser un agent nettoyant à base d'eau ou de mousse ou un solvant pur et sans eau.

Plusieurs facteurs tels que le type d'utilisation et l'entretien peuvent influencer la durabilité et l'apparence originale. Les résultats Wyzenbeek dépassant 100 000 doubles frottements n'ont pas démontré être un gage de longévité accrue du produit.

TECHNICAL INFORMATION

Width - Pattern	Content	Finish	Abrasion (D.F.)	Lightfastness	Cleaning Code
HUE - 54" 	65 % Post Industrial Recycled Polyester 35 % Post Consumer recycled Polyester	Latex	1 000 000	60 Hours Class 4,5	WS

CLEANING CODE

- **WS:** Use water-based or foam cleaning agent, or pure water-free solvent.

Multiple factors affect fabric durability and appearance retention, including end-user application and proper maintenance. Wyzenbeek results above 100,000 double rubs have not been shown to be an indicator of increased lifespan.



10871, avenue Salk
Montréal-Nord
(Québec) Canada
H1G 6M7

bouty.com

Échantillons disponibles via
Memo samples are available from

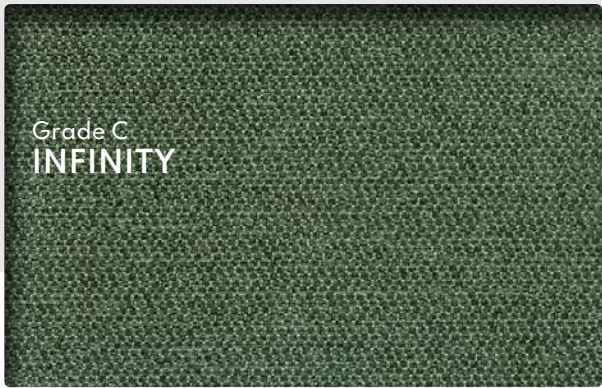
MOMENTUM
T E X T I L E S

memosamples.com | 800.366.6839



3450, 1re Rue
Saint-Hubert
(Québec) Canada
J3Y 8Y5

adi-artdesign.com



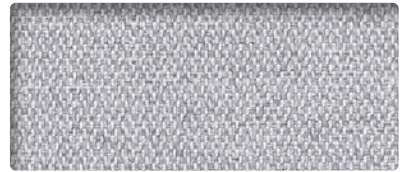
VINE
IN2685



STUCCO
IN2630



BARLEY
IN2399



ALUMINUM
IN2366



DOVE
IN2443



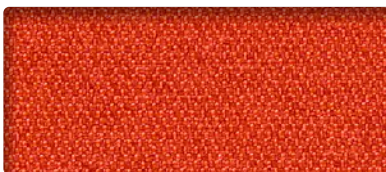
MAIZE
IN5242



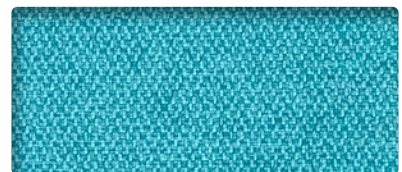
ASTER
IN2377



GULL
IN2476



PAPAYA
IN2553



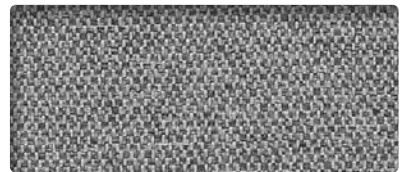
RINSE
IN2597



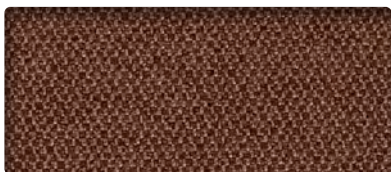
SABLE
IN2619



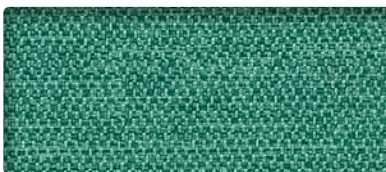
BERRY
IN2410



PEWTER
IN2564



TERRAIN
IN2641




ATOLL
IN2388



GRAPHITE
IN2465

INFORMATION TECHNIQUE

Patron - Largeur	Teneur en fibres et endos	Fini	Abrasion (D.F.)	Résistance à la lumière	Code de nettoyage
INFINITY - 57" 	74 % polyester recyclé post-consommation 26 % polyester Endos en acrylique	C-Zero®	200 000	40 Heures Classe 4	WS

CODE DE NETTOYAGE

- **WS:** Utiliser un agent nettoyant à base d'eau ou de mousse ou un solvant pur et sans eau.

Plusieurs facteurs tels que le type d'utilisation et l'entretien peuvent influencer la durabilité et l'apparence originale. Les résultats Wyzenbeek dépassant 100 000 doubles frottements n'ont pas démontré être un gage de longévité accrue du produit.

TECHNICAL INFORMATION

Width - Pattern	Content	Finish	Abrasion (D.F.)	Lightfastness	Cleaning Code
INFINITY - 57" 	74 % Post Consumer Recycled Polyester 26 % Polyester Acrylic Backing	C-Zero®	200 000	40 Hours Class 4	WS

CLEANING CODE

- **WS:** Use water-based or foam cleaning agent, or pure water-free solvent.

Multiple factors affect fabric durability and appearance retention, including end-user application and proper maintenance. Wyzenbeek results above 100,000 double rubs have not been shown to be an indicator of increased lifespan.



10871, avenue Salk
Montréal-Nord
(Québec) Canada
H1G 6M7

bouty.com

Échantillons disponibles via
Memo samples are available from

MOMENTUM
T E X T I L E S

memosamples.com | 800.366.6839



3450, 1re Rue
Saint-Hubert
(Québec) Canada
J3Y 8Y5

adi-artdesign.com



Grade C
MARATHON



VIVACIOS
MA3015

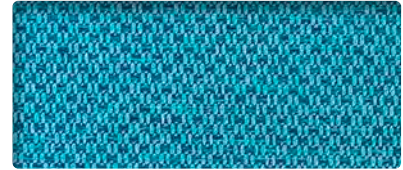
FLUORITE
MA2817



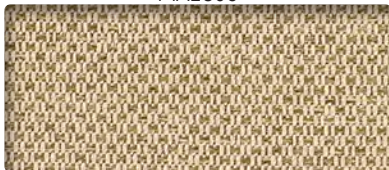
FLAX
MA2806



POLEN
MA2916



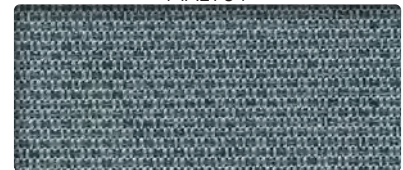
CYAN
MA2784



HERB
MA2839



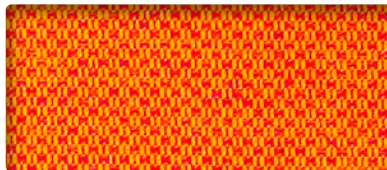
MARIGOLD
MA2861



RAIN
MA2927



CURRY
MA2773



ALERT
MA2707



TOILE
MA2993



CARAVEL
MA2729



PINOT
MA2905



DEEP
MA2795



SPRITE
MA2949



CLOVE
MA2762



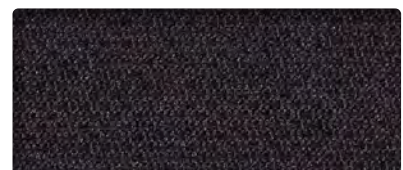
STORM
MA2960



OZ
MA2894




FOLIAGE
MA2828



NOIR
MA2872

INFORMATION TECHNIQUE

Patron - Largeur	Teneur en fibres et endos	Fini	Abrasion (D.F.)	Résistance à la lumière	Code de nettoyage
MARATHON - 57" 	75 % polyester recyclé post-consommation 25 % polyester Endos en acrylique	C-Zero®	200 000	40 Heures Classe 4	WS

CODE DE NETTOYAGE

- **WS:** Utiliser un agent nettoyant à base d'eau ou de mousse ou un solvant pur et sans eau.

Plusieurs facteurs tels que le type d'utilisation et l'entretien peuvent influencer la durabilité et l'apparence originale. Les résultats Wyzenbeek dépassant 100 000 doubles frottements n'ont pas démontré être un gage de longévité accrue du produit.

TECHNICAL INFORMATION

Width - Pattern	Content	Finish	Abrasion (D.F.)	Lightfastness	Cleaning Code
MARATHON - 57" 	75 % Post Consumer Recycled Polyester 25 % Polyester Acrylic Backing	C-Zero®	200 000	40 Hours Class 4	WS

CLEANING CODE

- **WS:** Use water-based or foam cleaning agent, or pure water-free solvent.

Multiple factors affect fabric durability and appearance retention, including end-user application and proper maintenance. Wyzenbeek results above 100,000 double rubs have not been shown to be an indicator of increased lifespan.



10871, avenue Salk
Montréal-Nord
(Québec) Canada
H1G 6M7

bouty.com

Échantillons disponibles via
Memo samples are available from

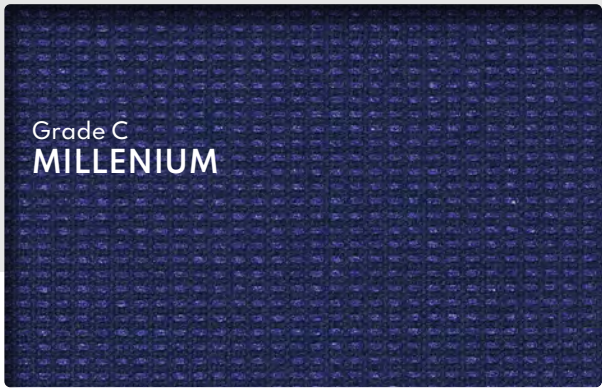
MOMENTUM
T E X T I L E S

memosamples.com | 800.366.6839

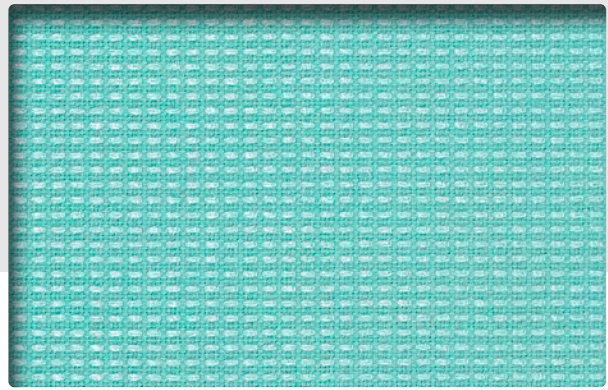


3450, 1re Rue
Saint-Hubert
(Québec) Canada
J3Y 8Y5

adi-artdesign.com



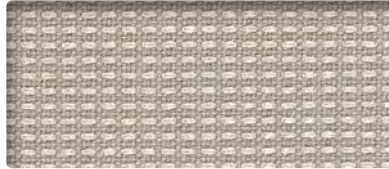
SAPPHIRE
MI3301



POOL
MI3268



CLEAN
MI3114



ZINC
MI3367



STEEL
MI3312



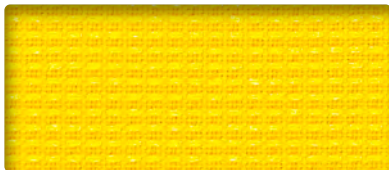
ELECTRIC
MI3158



PLATEAU
MI3257



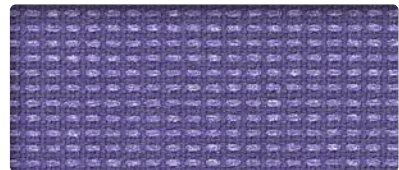
CASCADE
MI3081



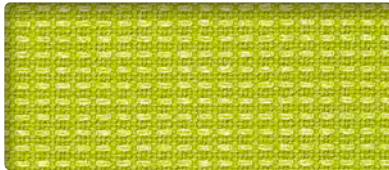
SPARK
MI3323



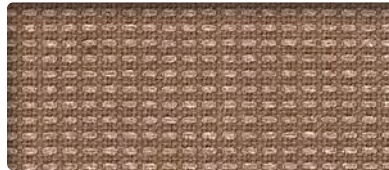
PYRITE
MI3279



TANZANITE
MI3334



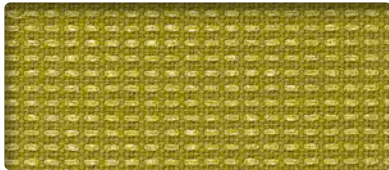
CRISP
MI3147



SAFARI
MI3290



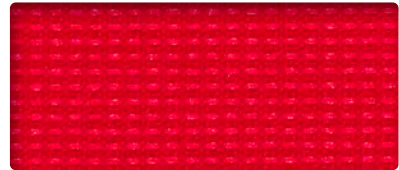
COASTAL
MI3125



PERIDOT
MI3246



AMBER
MI3059



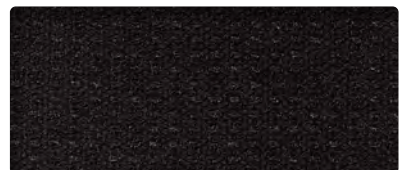
THRILL
MI3345



ORCHID
MI3235




CERISE
MI3103



ONYX
MI3224

INFORMATION TECHNIQUE

Patron - Largeur	Teneur en fibres et endos	Finis	Abrasion (D.F.)	Résistance à la lumière	Code de nettoyage
MILLENNIUM - 57" 	85 % polyester recyclé post-consommation 15 % polyester Endos en acrylique	C-Zero®	200 000	40 Heures Classe 4	WS

CODE DE NETTOYAGE

- **WS:** Utiliser un agent nettoyant à base d'eau ou de mousse ou un solvant pur et sans eau.

Plusieurs facteurs tels que le type d'utilisation et l'entretien peuvent influencer la durabilité et l'apparence originale.

Les résultats Wyzenbeek dépassant 100 000 doubles frottements n'ont pas démontré être un gage de longévité accrue du produit.

TECHNICAL INFORMATION

Width - Pattern	Content	Finish	Abrasion (D.F.)	Lightfastness	Cleaning Code
MILLENNIUM - 57" 	85 % Post Consumer Recycled Polyester 15 % Polyester Acrylic Backing	C-Zero®	200 000	40 Hours Class 4	WS

CLEANING CODE

- **WS:** Use water-based or foam cleaning agent, or pure water-free solvent.

Multiple factors affect fabric durability and appearance retention, including end-user application and proper maintenance.

Wyzenbeek results above 100,000 double rubs have not been shown to be an indicator of increased lifespan.



10871, avenue Salk
Montréal-Nord
(Québec) Canada
H1G 6M7

bouty.com

Échantillons disponibles via
Memo samples are available from

MOMENTUM
T E X T I L E S

memosamples.com | 800.366.6839

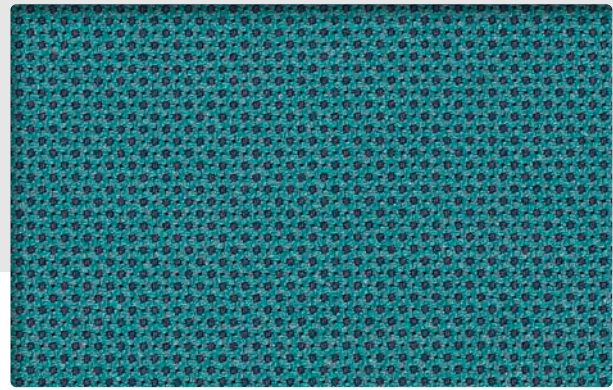


3450, 1re Rue
Saint-Hubert
(Québec) Canada
J3Y 8Y5

adi-artdesign.com



Grade C
ODYSSEY

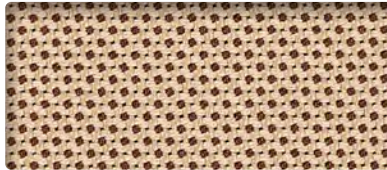


PRIMARY
OD3664

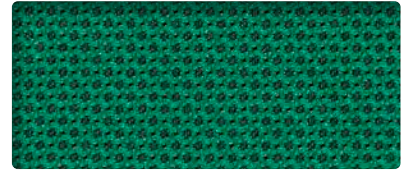
CRUISE
OD3466



SKIM
OD3708



LINEN
OD3598



EMERALD
OD3499



CRAFT
OD3455



SMITH
OD3719



INK
OD3532



BREEZE
OD3411



WESTERN
OD3741



MARITIME
OD3620



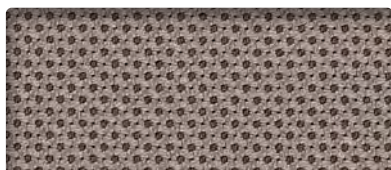
RUE
OD3686



AMP
OD3400



IRIS
OD3576



TINGE
OD3730



SANGRIA
OD3697



CEDAR
OD3444



FOSSIL
OD3510




EGGPLANT
ED3488



ROAST
OD3675

INFORMATION TECHNIQUE


Patron - Largeur	Teneur en fibres et endos	Fini	Abrasion (D.F.)	Résistance à la lumière	Code de nettoyage
ODYSSEY - 56" 	63 % polyester recyclé post-consommation 33 % polyester Endos en acrylique	C-Zero®	200 000	40 Heures Classe 4	WS

CODE DE NETTOYAGE

- **WS:** Utiliser un agent nettoyant à base d'eau ou de mousse ou un solvant pur et sans eau.

Plusieurs facteurs tels que le type d'utilisation et l'entretien peuvent influencer la durabilité et l'apparence originale. Les résultats Wyzenbeek dépassant 100 000 doubles frottements n'ont pas démontré être un gage de longévité accrue du produit.

TECHNICAL INFORMATION

Width - Pattern	Content	Finish	Abrasion (D.F.)	Lightfastness	Cleaning Code
ODYSSEY - 56" 	67 % Post Consumer Recycled Polyester 33 % Polyester Acrylic Backing	C-Zero®	200 000	40 Hours Class 4	WS

CLEANING CODE

- **WS:** Use water-based or foam cleaning agent, or pure water-free solvent.

Multiple factors affect fabric durability and appearance retention, including end-user application and proper maintenance. Wyzenbeek results above 100,000 double rubs have not been shown to be an indicator of increased lifespan.



10871, avenue Salk
Montréal-Nord
(Québec) Canada
H1G 6M7

bouty.com

Échantillons disponibles via
Memo samples are available from

MOMENTUM
T E X T I L E S

memosamples.com | 800.366.6839

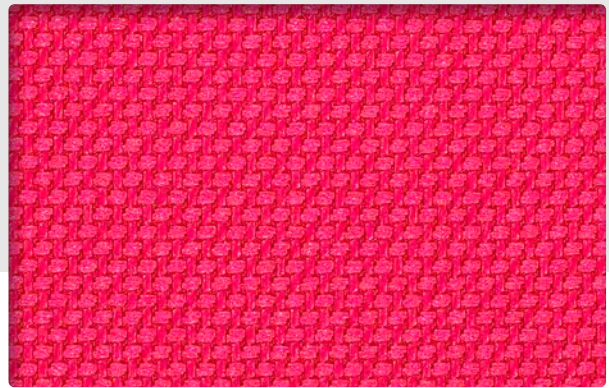


3450, 1re Rue
Saint-Hubert
(Québec) Canada
J3Y 8Y5

adi-artdesign.com



Grade C
TRADITION



FLIRT
TR3807

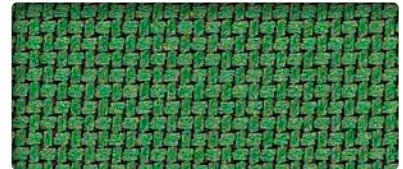
CLASS
TR3785



SOY
TR3994



SPROUT
TR4016



KELLY
TR3884



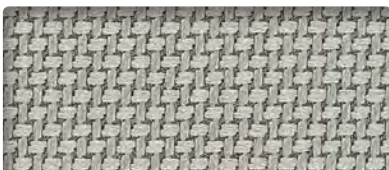
ASH
TR3763



SUN
TR4038



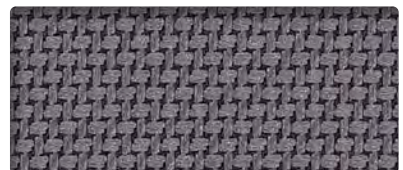
SOAR
TR3983



MIST
TR 3928



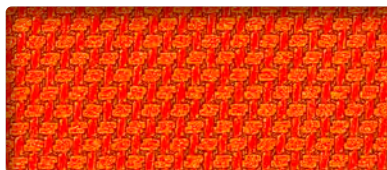
FROND
TR3818



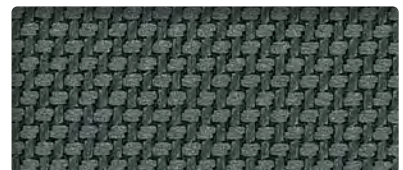
PLATED
TR3950



LATTE
TR3895



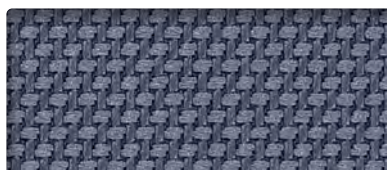
TANGO
TR4049



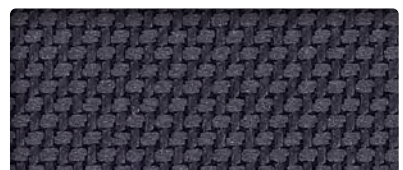
HEDGE
TR3840



BRANCH
TR3774



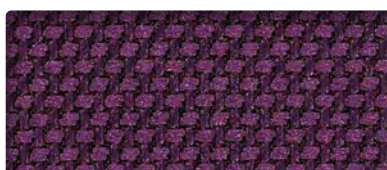
WASH
TR4071



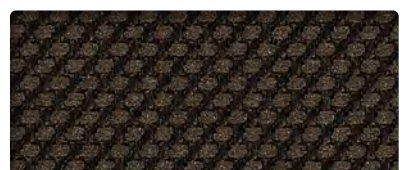
DISTANT
TR3796



MALBEC
TR3906




REGAL
TR3961



HIDDEN
TR3851

INFORMATION TECHNIQUE


Patron - Largeur	Teneur en fibres et endos	Fini	Abrasion (D.F.)	Résistance à la lumière	Code de nettoyage
TRADITION - 56" 	72 % polyester recyclé post-consommation 28 % polyester Endos en acrylique	C-Zero®	200 000	40 Heures Classe 4	WS

CODE DE NETTOYAGE

- **WS:** Utiliser un agent nettoyant à base d'eau ou de mousse ou un solvant pur et sans eau.

Plusieurs facteurs tels que le type d'utilisation et l'entretien peuvent influencer la durabilité et l'apparence originale. Les résultats Wyzenbeek dépassant 100 000 doubles frottements n'ont pas démontré être un gage de longévité accrue du produit.

TECHNICAL INFORMATION

Width - Pattern	Content	Finish	Abrasion (D.F.)	Lightfastness	Cleaning Code
TRADITION - 56" 	72 % Post Consumer Recycled Polyester 28 % Polyester Acrylic Backing	C-Zero®	200 000	40 Hours Class 4	WS

CLEANING CODE

- **WS:** Use water-based or foam cleaning agent, or pure water-free solvent.

Multiple factors affect fabric durability and appearance retention, including end-user application and proper maintenance. Wyzenbeek results above 100,000 double rubs have not been shown to be an indicator of increased lifespan.



10871, avenue Salk
Montréal-Nord
(Québec) Canada
H1G 6M7

bouty.com

Échantillons disponibles via
Memo samples are available from

MOMENTUM
T E X T I L E S

memosamples.com | 800.366.6839



3450, 1re Rue
Saint-Hubert
(Québec) Canada
J3Y 8Y5

adi-artdesign.com