

THERMA-FUSER™

THEMALLY POWERED VAV DIFFUSER



MODULAR VAV SYSTEMS

SUBMITTAL

Model

- ELW** DDC Interoperable Sidewall Linear Slot VAV Diffuser w/ Blade Damper



Size

	Actual Length		Metric Lengths		Number of Slots	Blow Direction
	INCHES	mm		mm		
<input type="checkbox"/> -24	23 ³ / ₄	603	<input type="checkbox"/> -24	595	<input type="checkbox"/> -1	<input checked="" type="checkbox"/> One Way Blow
<input type="checkbox"/> -36	35 ³ / ₄	908	<input type="checkbox"/> -36	895	<input type="checkbox"/> -2	
<input type="checkbox"/> -48	47 ³ / ₄	1213	<input type="checkbox"/> -48	1195	<input type="checkbox"/> -4	
<input type="checkbox"/> -60	59 ³ / ₄ ₆	1518	<input type="checkbox"/> -60	1495		

- LonWork® Protocol – LonMark® Compliance

Inputs

- Temperature Setpoints by Occupancy Mode
- Minimum Air Flow
- Minimum Air Flow Standby
- Maximum Air Flow
- Manual Override
- Occupancy/Application Mode
- VAV Heating/Cooling or VAV Cooling Only
(additional inputs available)

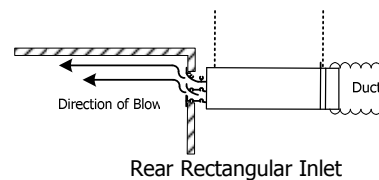
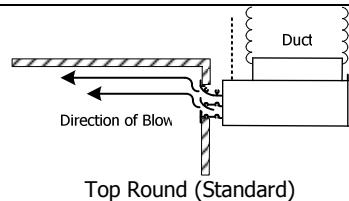
Outputs

- Space Temperature
- Airflow Rate
- Unit Status
- Effective Setpoint
- Terminal Load
(additional outputs available)

Options

Inlet

- Top Round (Standard)
- R Rear Rectangular

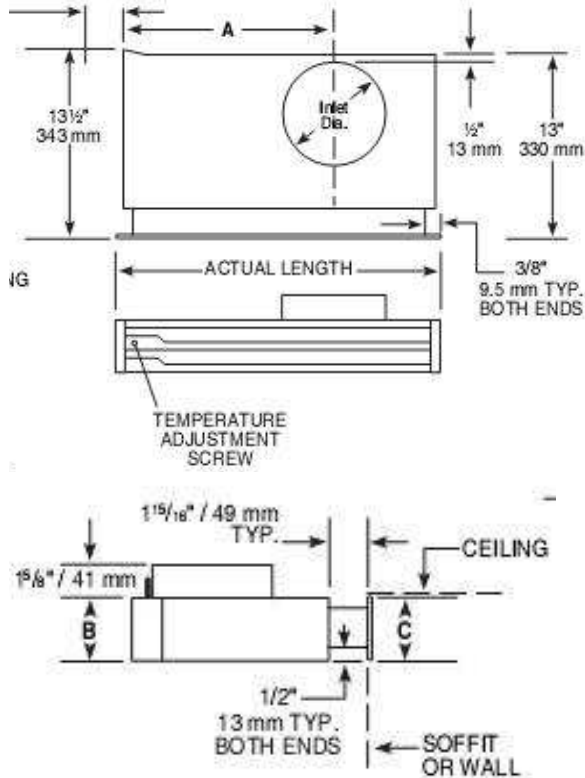


- I Insulation, internal

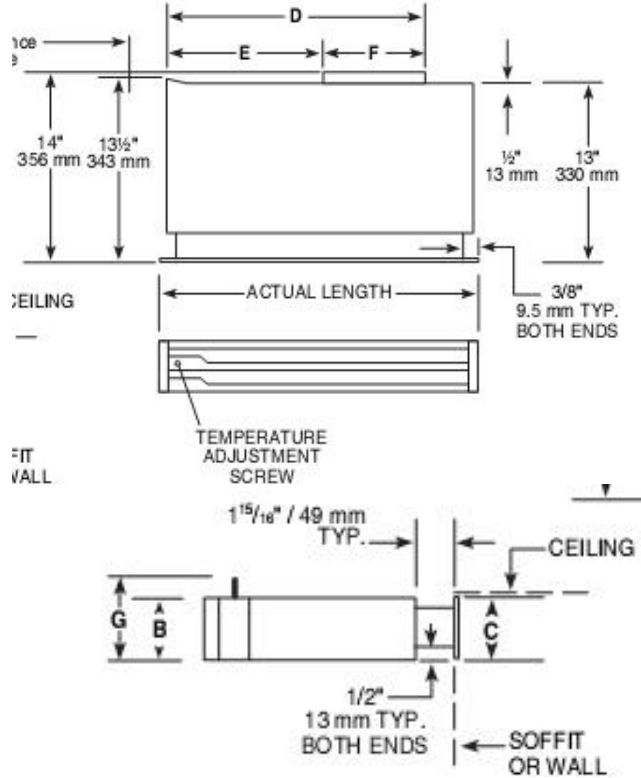
Dimensions

ELW & TLW-RAD

Top Round (Standard)



Rear Rectangular



ONE AND TWO SLOT

Nominal Length	Actual Length	Round Inlet Dia.	Optional Rectangular Inlet	A	B	C		D	E	F	G
						1 Slot	2 Slot				
24 (2411, 2421)	23 3/4 in. 603mm	5 7/8 in. 150mm	4 x 8 in. 102 x 203mm	15 1/8 in. 383mm	4 in. 102mm	2 9/16 in. 65mm	3 3/4 in. 95mm	19 3/4 in. 502mm	11 3/4 in. 298mm	8 in. 203mm	4 9/16 in. 118mm
36 (3611, 3621)	35 3/4 in. 908mm	5 7/8 in. 150mm	4 x 8 in. 102 x 203 mm	21 1/8 in. 535mm	4 in. 102mm	2 9/16 in. 65mm	3 3/4 in. 95mm	26 7/8 in. 683mm	18 7/8 in. 479mm	8 in. 203mm	4 9/16 in. 118mm
48 (4811, 4821)	47 3/4 in. 1213mm	7 7/8 in. 200mm	4 x 16 in. 102 x 406mm	28 1/8 in. 713mm	4 in. 102mm	2 9/16 in. 65mm	3 3/4 in. 95mm	36 7/8 in. 937mm	20 7/8 in. 530mm	16 in. 406mm	4 9/16 in. 118mm
60 (6011, 6021)	59 3/4 in. 1518mm	7 7/8 in. 200mm	4 x 16 in. 102 x 406 mm	34 1/8 in. 865mm	4 in. 102mm	2 9/16 in. 65mm	3 3/4 in. 95mm	36 7/8 in. 937mm	20 7/8 in. 530mm	16 in. 406mm	4 9/16 in. 118mm

FOUR SLOT

Nominal Length	Actual Length	Round Inlet Dia.	Optional Rectangular Inlet	A	B	C	D	E	F	G
36 (2641)	35 3/4 in. 908mm	7 7/8 in. 200mm	6 x 10 in. 152 x 254mm	22 1/8 in. 560mm	6 in. 152mm	6 in. 152mm	26 7/8 in. 683mm	16 7/8 in. 429mm	10 in. 254mm	6 5/8 in. 168mm
48 (4841)	47 3/4 in. 1213mm	9 7/8 in. 250mm	6 x 18 in. 152 x 457 mm	29 1/8 in. 738mm	6 in. 152mm	6 in. 152mm	38 7/8 in. 987mm	20 7/8 in. 530mm	18 in. 457mm	6 5/8 in. 168mm
60 (6041)	59 3/4 in. 1518mm	11 7/8 in. † 300mm	6 x 18 in. 152 x 457mm	37 7/8 in. 926mm	6 in. 152mm	6 in. 152mm	38 7/8 in. 987mm	20 7/8 in. 530mm	18 in. 457mm	6 5/8 in. 168mm

† Oval shaped inlet