



WWW.KOBACORP.COM

(732)469-0110

WE ARE (RAZY) ABOUT CONTAINERS

THE KOBACORP FAMILY

 <p>FRANZ BACH Founder & President</p>	 <p>FRANZ BACH JR. Vice President & CEO franz@kobacorp.com</p>	 <p>URSULA MOONEY Office Manager ext. 301 ursulam@kobacorp.com</p>
 <p>HEATHER BACH Production & Sales ext. 304 heatherb@kobacorp.com</p>	 <p>LORENA RODRIGUEZ Logistics ext. 302 lorenad@kobacorp.com</p>	 <p>JENNIFER WEISBECKER Marketing & Sales ext. 305 jenniferw@kobacorp.com</p>
 <p>GERARDO DELLA FORTUNA Design Engineer ext. 310</p>	 <p>RICK MOONEY Warehouse Manager</p>	 <p>KYLE MOONEY & BEN CHUNG Engineering Apprentices</p>
 <p>HENRY JENKINSON Sales Representative Central Eastern henryj@kobacorp.com (908)399-3557</p>	 <p>OWEN COREY Sales Representative North Eastern owenc@kobacorp.com (914)213-2537</p>	 <p>TERRY SUDHOFF Sales Representative Mid Western terrys@kobacorp.com (816)590-8778</p>

Office Phone - (732)469-0110
Fax Number - (732)469-0835

General Inquiry - info@kobacorp.com
Sales Inquiries - sales@kobacorp.com

 **VISIT KOBACORP.COM
FOR DISTRIBUTOR OPTIONS**



FROM OUR FAMILY TO YOURS;

THANK YOU FOR THE CONTINUED YEARS OF BUSINESS AND OPPORTUNITY!

NEW PRODUCTS

Products in the pipeline! Keep an eye for these upcoming additions.



New Base Design

The **TRENCH TEK** base is being included in all new molds being built.

Deep Planters



Deep Circular



Deep Half-Circle



The new Deep Planters offer a creative patio pot option to reach a growing millennial customer base with a thinner planter to conserve space for small apartment patios. Mix and match with tall plants like Geraniums or Rosemary.

Product	Top Diameter		Bottom Diameter		Depth	
	in	cm	in	cm	in	cm
Deep Circular Planter	8.5	21.6	5.5	14	9.5	24.1
Deep Half-Circle Planter	8.5	21.6	7	17.8	9.5	24.1



Square Planter

The new Square Planter has a louvered exterior design lending to a retail ready planter.

Square Planter

Product	Top Width		Bottom Width		Depth	
	in	cm	in	cm	in	cm
Square Planter	11.75	29.8	11.75	29.8	11.75	29.8



BE THE FIRST TO KNOW ABOUT
NEW PRODUCTS & SEASONAL PROMOTIONS
BY SIGNING UP FOR THE MONTHLY NEWSLETTER:



<http://bit.ly/ContainerConnect>

COLOR PALETTE

Inventoried products are stocked in colors denoted under product descriptions.

Single component products in custom colors are available when ordering a full pallet.

Multi component products (products with hangers or saucers) have specific color minimums that can be found in their product descriptions.

Pantone matched colors can also be ordered. Product minimums and pricing are determined per order.

NEUTRALS



Chocolate Brown



Espresso



Baby Blue



Artichoke



Granite



Slate



Red



Redwood



Candied Ginger



Honeysuckle



Wine

COMMON STOCK COLORS



Black



White



Green



Terra Cotta

BOLD & BRIGHT



Yellow



Lime Green



Medium Blue



Orange



Pink



Purple

PATIO PLANTERS



10” Earth Pot



6” Deck Pot



8” Deck Pot



10” Deck Pot



12” Deck Pot



14” Deck Pot



10” Earth Pot

- Comfortably covers a 3 Gal Nursery Container
- Saucer and Handle options sold seperately
- Stock Colors - Black, Green, Honeysuckle, Redwood, & Terra Cotta
- Custom color minimum; 32 boxes (1,472 pcs.)

Product	Diameter		Depth		Liquid Volume		Dry Vol.	Quantities		
	in	cm	in	cm	US	L	in³	Pcs/Box	Boxes/Pallet	Bulk Options
6” Deck Pot	6	15.2	5.25	13.3	1.5 qts	1.36	86.62	240	40	N/A
8” Deck Pot	8	20.3	6	15.2	3.2 qts	2.9	184.79	150	32	Half 3360
10” Deck Pot	10	25.4	7.5	19.05	1.8 gal	6.9	425.9	70	32	Half 1472
12” Deck Pot	12	30.4	9	22.8	3.5 gal	13.2	808.6	48	24	Half 847
14” Deck Pot	14	35.5	11.75	29.8	5.5 gal	20.8	1270.7	20	27	Full 900
10” Earth Pot	10	25.4	9	22.8	2.5 gal	9.46	577.6	46	32	Half 992

Deck Pot Series - 6” - 14”

- Deck Pot Stock Colors;
 - 6” & 8” Deck Pot - Black, Green, Honeysuckle, Terra Cotta
 - 10”, 12” & 14” Deck Pot - Black, Green, Slate, Honeysuckle, Redwood, & Terra Cotta
- Custom color minimum;
 - 8” - 32 boxes (4,800 pcs.)
 - 10” - 32 boxes (2,240 pcs.)
 - 12” - 24 boxes (1,152 pcs.)
 - 14” - 27 boxes (540 pcs.)



9” Cornerstone Planter

- Stock Colors - Black, Honeysuckle, & Terra Cotta
- Custom color minimum; 40 boxes (2,880 pcs.)

Product	Top Width		Bottom Width		Depth		Quantities	
	in	cm	in	cm	in	cm	Pcs/Box	Boxes/Pallet
Cornerstone Planter	9	22.8	5.5	14	6.5	16.5	72	40



25" Curve Pot



20" Curve Pot



16" Curve Pot



12" Curve Pot



9" Curve Pot



6" Curve Pot

The Curve Series - 6" - 25"

- Stock Colors - Honeysuckle, Slate, & Terra Cotta
- 12" Curve is compatible with the Grab & Tag Handle
- The 16", 20", and 25" Curve Pots need holes to be drilled in the bottom for drainage
- The 16", 20" and 25" Curve Pots are made off premise, lead times may vary.
- Custom color minimum;
 - 6" - 36 boxes (4,752 pcs.)
 - 9" - 18 boxes (1,296 pcs.)
 - 12" - TBD
 - 16", 20", & 25" - Inquire



	Diameter		Depth		Liquid Volume		Dry Vol.	Quantities		
Product	in	cm	in	cm	US	Metric	in ³	Pcs/Box	Boxes/Pallet	Bulk Options
6" Curve Pot	6	15.24	4.25	10.79	2 pt	946 mL	57.75	132	36	N/A
9" Curve Pot	9	22.86	6.75	17.14	7.2 pt	3.4 L	207.9	72	18	N/A
12" Curve Pot	12	30.48	9.25	23.49	3 gal	11.53 L	703.5	TBD	TBD	TBD
16" Curve Pot	16	40.64	12.2	31	6 gal	23.25 L	1418.8	18	18	N/A
20" Curve Pot	20	50.8	15.5	39.37	13.5 gal	51.1 L	3118.8	Per Piece	N/A	N/A
25" Curve Pot	25	63.5	18.5	47	21.37 gal	80.9 L	4938.1	Per Piece	N/A	N/A

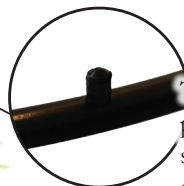
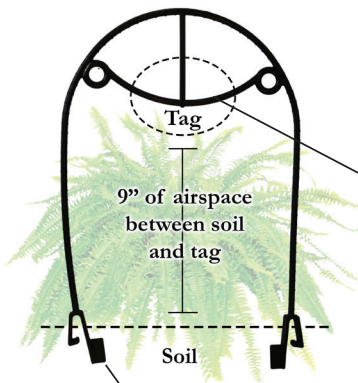


INCLUDE THE GRAB & TAG
HANDLE WITH THE
12" CURVE POT FOR
INSTANT ADDED VALUE!

GRAB & TAG HANDLE

The Grab & Tag Handle adds instant retail value to the 10" Earth Pot or 12" Curve Pot. Match a tag to your program for a polished end product.

Help your customer with an easy carry to the register!



Two fasteners are positioned on either side of the inside arch to secure the tag



Heavy duty clips ensure a durable hold on the planter rim

Soil paddles keep the handle from leaning



To & From Tag
Use a Sharpie to customize!

Grab & Tag Handle

Merchandising tool supplying growers with a space to add a stylized tag. The Grab & Tag Handle is convenient transport aide on retail floors and can hold up to 20 lbs.

Compatible with **KOBA's** 10" Earth Pot, and 12" Curve Pot.

** Tag sold separately from handle.*

Product	Height		Width		Pcs/Ctn
	in	cm	in	cm	
Grab & Tag Handle	16	40.64	11	27.94	200
Tag	4	10.16	5	12.7	100

Tags for Grab & Tag Handle

Delight your customers with a visual aid. Tags are bundled in 100, offering the opportunity to order two different designs per box of handles.

- Call (732)469-0110 for customization options.



Welcome Tag



Bloom Tag



Patriotic Tag



Mom Tag



Christmas Tag



Holiday Tag

THE GRAB & TAG HANDLE IS COMPATIBLE
WITH BOTH THE 10" EARTH POT
& THE 12" CURVE POT



4" & 6" Cover Pots

Quickly cover unsightly pots, or

- Stock Colors - Black, Green, Terra Cotta, & White
- Custom color minimums;
 - 4" - 40 boxes (28,000 pcs.)
 - 6" - 1 Bulk (10,120 pcs.)

'DRIP PROOF' POTS

Products that feature saucers or lack drainage. Anti-mess options for indoor plants and retail displays.



10" Cut Flower Bucket

A sturdy bucket with a solid base allowing for storage of top-heavy blooms.

- Only available in Black

Earth Pot Saucer

- Saucer snaps onto the bottom of the Earth Pot
- Sold seperately from Earth Pot
- Stock Colors - Black, & Terra Cotta

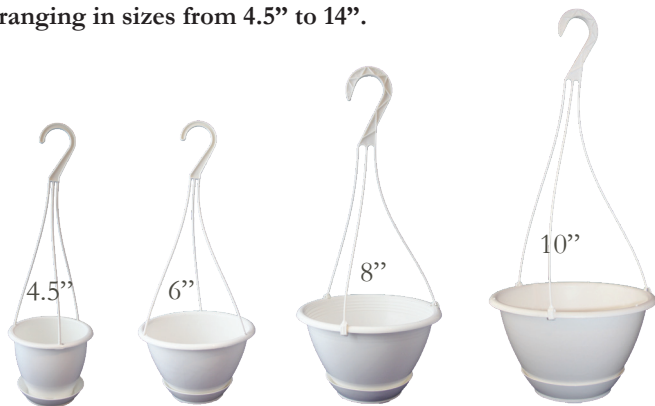
HANGING BASKETS
WITH SAUCERS ON
NEXT PAGE



Product	Diameter		Depth		Liquid Volume		Dry Vol.	Quantities	
	in	cm	in	cm	US	Metric	in ³	Pcs/Box	Boxes/Pallet or Bulk
4" Cover Pot	4	10.1	4.00	10.1	1.2 pt	590 mL	36.10	700	40 boxes/pallet
6" Cover Pot	6	15.2	5.13	13.0	3.6 pt	1.77 L	108.3	406	28 bx/pal or 10,120 bulk
10" Cut Flower Bucket	10	25.4	9	22.8	2.25 gal	8.51 L	519.8	30	1206, 1728, or 2016
10" Earth Pot	10	25.4	9	22.8	2.5 gal	9.46 L	577.6	46	32 bx/pal or 992 half bulk
10" Earth Pot Saucer	10	25.4	1.75	4.44				92	40 boxes/pallet

HANGING BASKETS

Hanging Baskets for every type of program, ranging in sizes from 4.5" to 14".



Traditional Hanging Basket

- Basket and saucer are attached during manufacturing process to ensure quality.
- Stock Color - White
- Custom color minimum;
 - 4.5" - 69 boxes (9,108 pcs.)
 - 6" - 38 boxes (9,120 pcs.)
 - 8" - 69 boxes (9,108 pcs.)
 - 10" - 188 boxes (9,024 pcs.)



11" Jumbo Classic Hanging Basket

- Available as saucerless or with saucer attached.
- Stock Colors - Black, Green, & White
- Custom color minimum; 180 boxes (9,000 pcs.)
- Stocked with a 19" 3 Strand Hanger



WWW.KOBACORP.COM

Product	Diameter		Depth		Liquid Volume		Dry Vol.	Quantities	
	in	cm	in	cm	US	Metric	in ³	Pcs/Box	Boxes/Pallet or Bulk
4.5" Traditional	4.5	11.4	4.38	11.1	1.60 pt	760 mL	46.93	132	18 boxes/pallet
6" Traditional	6	15.2	4.13	10.4	1.16 qt	1.12 L	68.59	240	18 boxes/pallet
8" Traditional	8	20.3	5.25	13.3	2.48 qt	2.36 L	144.4	132	18 boxes/pallet
10" Traditional	10	25.4	6.13	15.5	1.17 gal	4.43 L	270.7	48	40 boxes/pallet
11" Jumbo Classic	10	25.4	6.38	16.2	1.73 gal	6.3 L	400.2	50	32 bxs/pal or 896 Half Bulk
Jumbo Classic Saucer	7.38	18.7	.75	1.9					

* Hangers are meant to be hung on round tubing or hooks, not flat surfaces.



14" Saucerless Hanging Basket

- Stocked with 24" 4 Strand Wire Hanger
- Stock Colors - Candied Ginger, Green, Terra Cotta, & White
- Custom color minimum; 27 boxes (1,620 pcs.)

12" Saucerless Hanging Basket

- Stocked with 22" 4 Strand Clip Hanger
- Stock Colors - Black, Candied Ginger, Green, Terra Cotta, & White
- Custom color minimum; 50 boxes (2,500 pcs.)



10.5" TRENCH TEK Hanging Basket

- Base design eliminates need for watering disc resulting in less plastic and less labor processing.
- Reservoirs hold excess water elongating time between waterings, conserving labor and water.
- Stocked with 17" 3 Strand Clip Hanger
- Stock Colors - Green & White
- Custom color minimum; 94 boxes (9,024 pcs.)



8" Fluted Hanging Basket

- Stocked with 15" 3 Strand Clip Hanger
- Stock Colors - Green & White
- Custom color minimum; 108 boxes (9,072 pcs.)

10" Fluted Hanging Basket

- Stocked with 17" 3 Strand Clip Hanger
- Stock Colors - Green & White
- Side holes (4 or 8) are available upon request
- Custom color minimum; 125 boxes (9,000 pcs.)

	Diameter		Depth		Liquid Vol.		Dry Vol.	Quantities		
Product	in	cm	in	cm	gal	L	in ³	Pcs/Box	Boxes/Pallet	1/2 Bulk
8" Fluted	8	20.3	5.13	13.0	.703	2.66	162.4	84	40	N/A
10" Fluted	10	25.4	5.75	14.6	1.25	4.73	288.8	72	40	1,900
10.5" Trench Tek	10.5	26.6	6	15.24	1.25	4.73	288.6	96	40	2,304
12" Saucerless	12	30.4	7.25	18.4	2.37	8.89	548.7	50	24	840
14" Saucerless	14	35.5	7.75	19.6	3.04	11.5	703.7	60	27	N/A

SUPPORT PRODUCTS

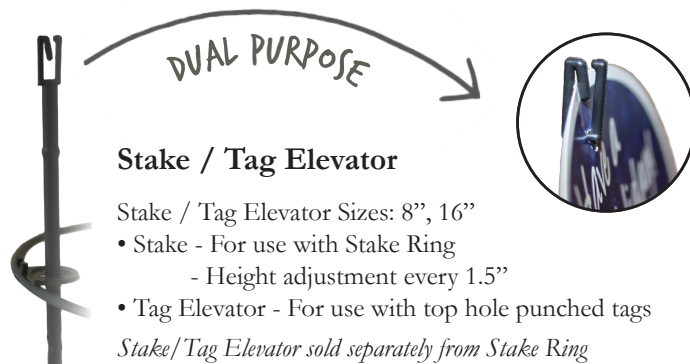
Products that assist in supportive functions.

Wrap-A-Cage

Great for stabilizing Poinsettias, Hydrangeas, and Tomatoes. The Wrap-A-Cage ships flat and three interlocking fasteners allow for adjustable sizing.

- 9.25" tall - 8" from top of pot
- Compatible with both 9" and 10" pots.
- 125 pcs/box

3 INTERLOCKING
FASTENERS ALLOW FOR
ADJUSTABLE SIZING!



Stake / Tag Elevator

Stake / Tag Elevator Sizes: 8", 16"

- Stake - For use with Stake Ring
- Height adjustment every 1.5"
- Tag Elevator - For use with top hole punched tags

Stake/Tag Elevator sold separately from Stake Ring



Trellis

A compact trellis well-suited for young climbing plants. Ask about alternative quantities.



Product	Trellis Height		Trellis Width		Stake Depth		Pcs/Box
	in	cm	in	cm	in	cm	
Trellis	5.5	13.97	5.25	13.33	2.75	6.98	800

FOLIAGE RINGS

Foliage Rings support heavy foliage from falling over, encourage uniform growth, and protect during sleeving and transport.

Grower Tip: Order a size larger than your pot size to easily pull ring up from the bottom.



Cyclone Ring

- Improve shape consistency of bushy plants
- For Use: Place ring on plants at 3" to 5" of growth and prior to budding of flowers. Allow ring to rest on foliage as to elevate with plant growth. If plant cuttings are not growing at the same pace, lift the unlevel part of the ring and situate until level.

Product	Diameter		Pcs/Box
	in	cm	
8" Cyclone Ring	8	20.3	300
10" Cyclone Ring	10	25.4	300
12" Cyclone Ring	12	30.4	350
14" Cyclone Ring	14	35.5	450
16" Cyclone Ring	16	40.6	550



Plant Support Ring

- Only Compatible with Plastic Injection Molded Pots
- How to check your pot: Squeeze it! Is it rigid? If so it is Plastic Injection, this product is compatible.



Stake Ring

- Support top-heavy or climbing plants.
- Efficient replacement for garden twine.
- For Use: Cut ring between double eyelet and wrap ring around plant, then stake the two eyelets, which had been cut apart, together.

Product	Diameter		Eyelets	Pcs/Box
	in	cm		
4" Stake Ring	4	10.1	3	650
6" Stake Ring	6	15.2	3	650
8" Stake Ring	8	20.3	5	650
10" Stake Ring	10	25.4	5	650
12" Stake Ring	12	30.4	5	650
14" Stake Ring	14	35.5	5	650
16" Stake Ring	16	40.6	5	650

Product	Diameter		Depth		Pcs/Box
	in	cm	in	cm	
4" Support Ring	4	10.1	2.38	6.04	1680
5" Support Ring	5	12.7	3.25	8.25	1000
6" Support Ring	6	15.2	3.38	8.58	1500
7" Support Ring	7	17.7	3.75	9.52	1250
8" Support Ring	8	20.3	4.25	10.8	1250
9" Support Ring	9	22.8	4.63	11.7	500
10" Support Ring	10	25.4	5.25	13.3	500
12" Support Ring	12	30.4	7.00	17.7	450
14" Support Ring	14	35.5	9.00	22.8	400



Coex Pot Ring

- Only Compatible with Coex Pots
- How to check your pot: Squeeze it! Is it malleable? If so it is Coex, this product is compatible.

Product	Diameter		Depth		Pcs/Box
	in	cm	in	cm	
6" Coex Pot Ring	6	15.2	3.38	8.58	1400
7" Coex Pot Ring	7	17.7	3.75	9.52	1250
8" Coex Pot Ring	8	20.3	4.25	10.8	1250
9" Coex Pot Ring	9	22.8	4.63	11.7	500
10" Coex Pot Ring	10	25.4	5.25	13.3	500

GROW PANS

A selection of pans often used for herbs, bulbs, and pansy programs.

TRENCH TEK™

Deko Pan Series - 8", 10", & 12"



- Conserve water and labor with trench base design, allowing longer times between waterings.
- Optimize greenhouse growing space by purchasing compatible hangers, allowing pans to be hung.
- 8" & 10" Deko Pans Compatible with 3 strand hangers
- 12" Deko Pan Compatible with 4 strand hangers
- Stock Colors - Black, Candied Ginger, Green, & Terra Cotta
- Custom color minimum;
 - 8" - 32 boxes (7,872 pcs.)
 - 10" - 40 boxes (5,200 pcs.)
 - 12" - 24 boxes (2,784 pcs.)

Product	Diameter		Depth		Liquid Volume		Quantities		
	in	cm	in	cm	gal	L	Pcs/Box	Boxes/Pallet	1/2 Bulk
10" Bulb Pan	10	25.4	4.75	12	.843	3.8	80	40	2185
8" Deko Pan	8	20.3	4	10.16	.525	1.9	246	32	5250
10" Deko Pan	10	25.4	4.5	11.43	1.05	3.9	130	40	3420
12" Deko Pan	12	30.4	5	12.7	1.56	5.9	116	24	1836

... NEED A QUOTE?

CALL (732)469-0110

MONDAY - FRIDAY: 9AM - 3PM EST

CUSTOM
COLORS

Single component products in custom colors available when ordering a full pallet.

Bulb Pan - 10"

- Exterior design features alternating vertical lines of matte and gloss finish.
- The Bulb Pan is compatible with both 3 strand hangers, and the Earth Pot Saucer - perfect for optimizing growing space in the greenhouse.
- Stock Color - Green
- Custom color minimum; 40 boxes (3,200 pcs.)



GROW POTS



Standard Pot - 3" & 3.5"

Perfectly sized for succulents programs.

- 3" Std. Pot Stock Colors - Baby Blue, Clay, Green, Lime Green, Pink, & White
- 3.5" Std. Pot Stock Colors - Green & White
- Custom color minimum;
 - 3" - 28 boxes (49,000 pcs.)
 - 3.5" - 28 boxes (30,240 pcs.)



Product	Diameter		Depth		Liquid Volume		Dry Volume		Quantities	
	in	cm	in	cm	US	Metric	in ³		Pcs/Box	Bulk
3" Standard Pot	3.0	7.62	2.75	6.98	7.0 fl. oz.	207 mL	12.63		1750	
3.5" Standard Pot	3.5	8.89	3.00	7.62	10 fl. oz.	295 mL	18.05		1080	
4" Azalea Pot	4.0	7.87	3.06	7.77	14 fl.oz.	440 mL	27.0		1280	
4.5" Azalea Pot	4.5	11.4	4.00	10.2	1.27 pt	600 mL	36.7		TBD	
5" Azalea Pot	5.0	12.7	3.75	10.1	1.68 pt	820 mL	50.54		612	10,125
5.5" Azalea Pot	5.5	13.7	4.62	11.7	1.28 qt	1.45 L	88.77		585	15,250
6.5" Azalea Pot	6.5	16.5	5.13	13.0	1.66 qt	1.89 L	115.52		246	10,350
7" Azalea Pot	7.0	17.7	5.50	13.9	2.16 qt	2.48 L	151.62		264	8,050
7.5" Azalea Pot	7.5	19.0	6.00	15.2	3.375 qt	3.19 L	194.94		220	6,075
8" Azalea Pot	8.0	20.3	6.25	15.8	1.00 gal	3.78 L	231.04		206	5,625
10" Azalea Pot	10	25.4	7.50	19.0	1.75 gal	6.62 L	404.32		36	1,800

Azalea Pot Series - 4" - 10"

- Injection Molded Pots are a premium option; rigid, thick walled, and more steadfast with top heavy plants
- Stock Colors - Green & White
- Custom color minimum;
 - 4" - 28 boxes (35,840 pcs.)
 - 5" - 28 boxes (17,136 pcs.)
 - 5.5" - 18 boxes (10,530 pcs.)
 - 6.5" - 28 boxes (6,888 pcs.)
 - 7" - 28 boxes (7,392 pcs.)
 - 7.5" - 18 boxes (3,960 pcs.)
 - 8" - 18 boxes (3,708 pcs.)
 - 10" - 40 boxes (1,440 pcs.)



UPC LABEL
PRINTING AND
APPLICATION
AVAILABLE



DO YOU KNOW THE DIFFERENCE?

INJECTION VS. COEXTRUSION

These are two methods of plastic manufacturing.

PLASTIC INJECTION

Plastic Injection products start with shredded plastic granules that are heated and pressed into a steel or aluminum mold.

Plastic Injection products can be made out of recycled plastic, and are known for being more rigid, steady, and thick-walled.

COEXTRUSION / THERMOFORM

Coextrusion (or Thermoforming) is the process of melding two layers of plastic sheeting under extreme heat and pressure in a die, forming it into one solid product.

Coex products are known for being malleable, thin-walled, and an economic option.



Coex Pots & Carry Trays

Standard products are inventoried stock, special order products can be sourced through external suppliers. Please contact your sales representative or the KOBA office for product specifications and quantity options. Visit kobacorp.com for special order product options.



Coex Pots
3.5" Coex Pot
4" Coex Pot
4.33" Coex Pot
4.33" Coex Pot
4.50" Coex Pot
5" Coex Pot
6" Coex Pot
6.3" Coex Pot
6.5" Coex Pot
7.5" Coex Pot
4.5" Square Coex Pot



Carry Trays	Hold Count
3.0" Carry Tray	12
3.5" Carry Tray	10, 12, & 18
4.0" Carry Tray	10 & 15
4.33" Carry Tray	10
4.33" Deep Carry Tray	10
4.5" Carry Tray	10, 12, & 15
5.0" Carry Tray	8
5.5" Carry Tray	8
6.0" Carry Tray	6
6.5" Carry Tray	6
4.5" Square Pot Carry Tray	15

INSERTS

True Inserts (10" x 20")

We carry stock of standard products and order custom options regularly. Please call our office (732)469-0110 for product specifications, quantities, and custom product options.

- True Inserts are compatible with the True Tray.

True (10" x 20") Inserts

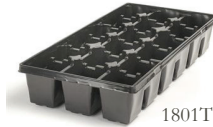
Insert 804T

Insert 806T

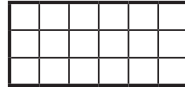
Insert 1204T

Insert 1206T

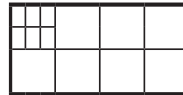
Insert 1801T



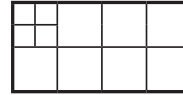
1801T



806T



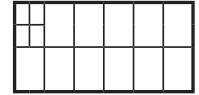
804T



1206T



1204T



Connecticut Inserts (13.64" x 10.64")

Standard products in stock - custom product options available. Please call our office (732)469-0110 for product specifications, quantities, and special order options.

- CT Inserts are compatible with the Connecticut Tray.

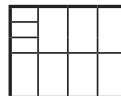
Connecticut (13.64" x 10.64") Inserts

Insert 803CT

Insert 804CT



803CT



804CT



FLATS & PLUG TRAYS

Coex products are sourced from suppliers. Please contact your sales representative or the office for product specifications and quantity options. Visit www.kobacorp.com for special order items.



Connecticut (13.75" x 10.75") Tray
CT Tray



True Tray (10" x 20")

The True Tray, also called the Injection Web Flat, is compatible with any of the True Inserts.

Product	Tray Length		Tray Width		Tray Depth		Quantity
	in	cm	in	cm	in	cm	
True Tray	20	50.8	10	25.4	3.63	6.68	1000

Connecticut Tray (13.75" x 10.75")

The Connecticut Tray is sourced from outside suppliers. We carry limited stock of this product. Please call our office (732)469-0110 for product specifications, quantities, and special order options. This tray is compatible with either of the Connecticut Inserts.

- Plug Trays**
- Plug Tray 50
- Plug Tray 72
- Plug Tray 105
- Plug Tray 128
- Plug Tray 288
- Plug Tray 512



Plug Trays

Plug Trays are sourced from outside entities. We carry limited stock of these products. Please call our office (732)469-0110 for product specifications, quantities, and special order options. The listed Plug Trays are standard options, we can also source a wide variety of miscellaneous Plug Tray options.

- ‘Plug Tray [#]’ - The numbers indicated are the amount of cells in the Plug Tray.

COMPANY POLICIES

KOBA manufactures plastic containers for wholesale growing capabilities. KOBA sells direct and through various distributors. Quantities, color minimums, product sizes, etc. are all subject to change.

Payment Terms: COD until credit is established, once established - net 30 days. 2% off for customers with established credit paying cash or check at time of pickup or delivery. Credit card payments are not eligible for the 2% off incentive. We accept American Express, Discover, Mastercard, and VISA.

Color Minimums: Plastic Injection Molded single component products can be ordered in any of the colors on the KOBA Color Palette with a minimum order of one pallet. Multicomponent products (products with hangers or saucers) have specific color minimums listed under each product in catalog and on the KOBA website. Additionally, KOBA offers a bypass on large multicomponent minimums with a one pallet minimum at a 25% color change fee on the product ordered. Orders of colors outside of stock colors are considered a Special Order*. Coex Pots and Trays are only offered in stock colors.

Promotion Policy: Promotional offers are only available during specified times on specified products. Offers cannot be combined with any other discounts, unless specifically stated. 2% off on orders \$15,000 - \$24,999, 5% off on \$25,000 - \$99,999, 10% off on \$100,000.

Shipping Policy: Daily shipments are made with multiple common carriers. Our shipping department will tailor your order to the best method of shipment determined by your location, order weight, and size.

Return Policy: Items that are considered Special Orders*, including items not in inventory, are not eligible for returns or refunds. Items ordered from existing inventory are entitled to be refunded or returned based on complaint. If items are damaged during shipment the buyer must note damages on Bill of Lading paperwork prior to the delivery truck leaving. Pictures of damaged items can be sent to sales@kobacorp.com or faxed to (732)469-0835 and will expedite the return process. If a product is unsatisfactory, a written explanation is needed before the item may be considered for refund. Buyer must take into account the description of the item before requesting a refund. If the item matches the description by the seller and the buyer is unsatisfied, the seller is not responsible for a refund. A 15% restocking fee will be applied to orders that have already been shipped and are being returned.

Cancellation Policy: An item may be canceled up to 10 days after placing an order. After 10 days the buyer is responsible for the payment.

Complaints: Any complaints about items or sellers may be sent to our support team: info@kobacorp.com or (732)469-0110. There is no guarantee of a resolution. Each case will be looked at individually, and the seller will be in contact as well.

Sample Fulfillment: Access a sample order form on our website; www.kobacorp.com. Completed forms may be sent to lorenad@kobacorp.com or Faxed: (732)469-0835. Please allow 2-3 business days for sample order fulfillment. Samples will be shipped through UPS. Sample Inventory is limited, Coex items are limit one per product, and Carry Trays are limit one per customer.



KOBAC 60 Baekeland Ave.
Middlesex, NJ 08846

Place
Postage
Here



THE
CONTAINER
(ONNECTION)

Monthly Newsletter:
<http://bit.ly/ContainerConnect>

WWW.KOBACORP.COM (732)469-0110 FAX (732)469-0835