

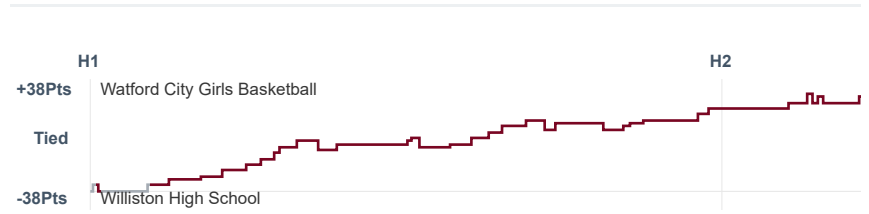
# Box Score Report

WCHS vs Williston - Jan 19, 2021 - W 79-42

## Period Stats

Team	1	2	Final
<b>WCHS</b>	<b>41</b>	<b>38</b>	<b>79</b>
WHS	13	29	42

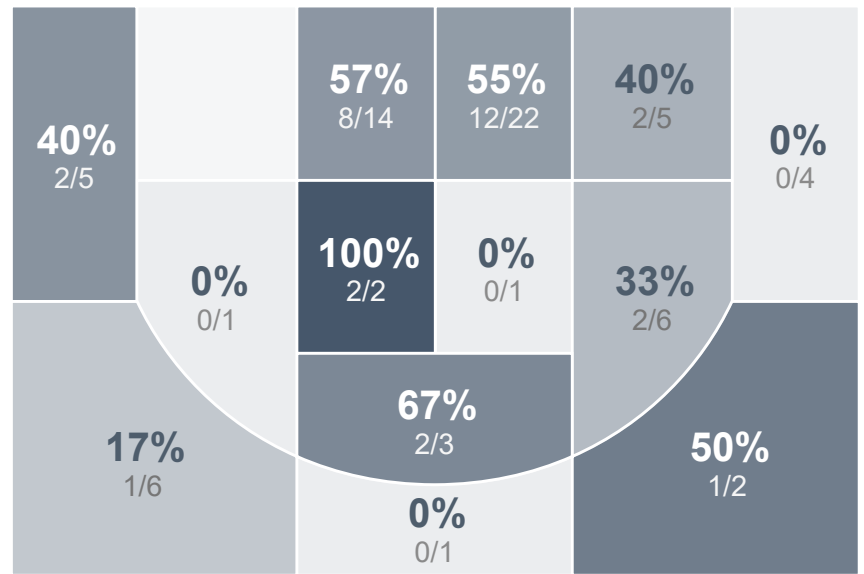
## Run Graph



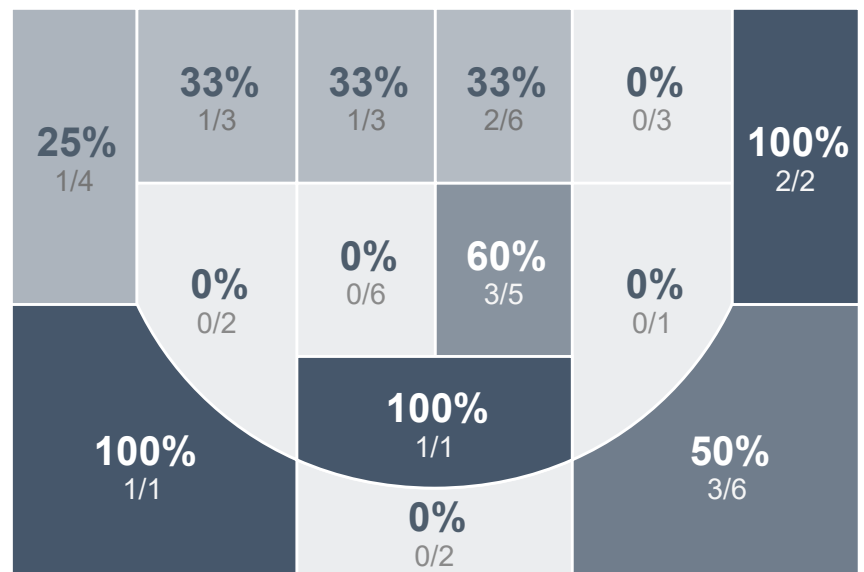
## Team Stats

	WCHS	WHS
Field Goal %	<b>44.4%</b>	33.3%
Effective Field Goal %	<b>47.2%</b>	41.1%
2FG Made/Attempted	<b>28/54</b>	8/30
2FG%	<b>51.9%</b>	26.7%
3FG Made/Attempted	4/18	<b>7/15</b>
3FG%	22.2%	<b>46.7%</b>
FT Made/Attempted	<b>11/18</b>	5/9
Free Throw Percentage	<b>61.1%</b>	55.6%
Points Per Possession	<b>1.09</b>	0.60
Transition Points	<b>18</b>	5
Points Off Turnovers	<b>38</b>	12
Second Chance Points	<b>11</b>	5
Points in the Paint	<b>44</b>	12
Offensive Rebounds	<b>24</b>	10
Defense Rebounds	<b>23</b>	20
Assists	<b>26</b>	7
Deflections	<b>10</b>	2
Steals	<b>20</b>	8
Blocks	<b>2</b>	0
Turnovers	<b>16</b>	<b>31</b>
Personal Fouls	<b>14</b>	<b>15</b>
Charges Taken	<b>1</b>	0

## Watford City Girls Basketball



## Williston High School



## Watford City Girls Basketball's Player Stats

Name	Pts	FG	3FG	FT	+/-	MINS	OREB	DREB	AST	DEFL	STL	BLK	TO	FOUL	CHG
#1 Hayley Ogle	10	3/8	1/2	3/6	+ 37	23	6	4	4	2	5	0	3	1	0
#2 Jaelyn Ogle	7	3/6	1/3	0/0	+ 7	18	3	1	2	2	2	0	1	1	0
#3 Lexi Moberg	0	0/3	0/2	0/1	+ 8	19	0	0	1	1	1	0	2	2	0
#5 Jessica Mogen	5	1/5	1/4	2/3	+ 24	25	4	3	5	0	1	0	1	3	1
#10 Allyson Cross	0	0/0	0/0	0/0	+ 1	3	0	0	0	0	0	0	0	1	0
#11 Gracen Breitbach	11	5/16	1/2	0/0	+ 27	23	3	4	1	0	2	1	4	0	0
#12 Emma Mogen	10	5/7	0/1	0/0	+ 38	30	1	4	5	2	5	0	2	1	0
#14 Akira Hogue	4	2/3	0/1	0/0	+ 1	8	0	1	1	0	0	0	1	0	0
#20 Montanna Fettig	2	1/1	0/0	0/1	+ 4	9	1	1	2	0	0	0	1	3	0
#24 Ashley Holen	19	7/12	0/1	5/5	+ 26	22	1	1	3	1	2	0	1	0	0
#40 Madison Spacher	11	5/11	0/2	1/2	+ 24	24	3	2	2	2	2	1	0	2	0

## Williston High School's Player Stats

Name	Pts	FG	3FG	FT	+/-	MINS	OREB	DREB	AST	DEFL	STL	BLK	TO	FOUL	CHG
#0 Abigail Elkins	0	0/2	0/1	0/0	- 27	16	0	0	2	0	0	0	7	3	0
#1 Kierra Slagle	7	2/5	1/2	2/2	- 10	13	1	1	0	1	0	0	3	0	0
#3 Shelby Meyer	14	5/20	3/7	1/2	- 29	34	1	9	3	1	3	0	7	5	0
#4 Grace Johnson	7	2/4	2/2	1/3	- 3	9	0	1	0	0	0	0	1	0	0
#5 Mariska Amoo-Gottfried	4	2/3	0/1	0/0	- 27	21	0	0	1	0	2	0	2	1	0
#10 Samantha Grasser	0	0/0	0/0	0/0	- 4	5	0	0	0	0	0	0	0	1	0
#11 Sydney Bethke	0	0/2	0/1	0/0	- 15	14	0	0	0	0	0	0	0	1	0
#13 Erin Powers	0	0/1	0/0	0/0	- 32	20	3	0	0	0	0	0	2	1	0
#15 Olivia Dallas	0	0/0	0/0	0/0	- 8	6	0	0	0	0	1	0	1	1	0
#23 Michelle Apolis	0	0/2	0/0	0/0	+ 1	1	1	0	0	0	0	0	0	0	0
#24 Tia Bertelsen	0	0/0	0/0	0/0	- 2	5	0	2	0	0	0	0	0	0	0
#30 Chesni Strand	10	4/5	1/1	1/2	- 24	28	4	3	1	0	2	0	6	0	0
#32 Anne Alyce Harper	0	0/0	0/0	0/0	+ 1	1	0	0	0	0	0	0	0	0	0
#40 Taylor Rath	0	0/1	0/0	0/0	- 4	8	0	0	0	0	0	0	2	2	0