

Rabbit Anti-CD5 [EP77]: RM0047, RM0047RTU7

Intended Use: For Research Use Only

Description: CD5 (Lymphocyte antigen T1/Leu-1) is a transmembrane glycoprotein which has been implicated as a receptor in the regulation of T-cell proliferation. CD5 antibody labels a variety of T lymphocytes, mantle zone lymphocytes and a small subset of B lymphocytes. In tumors, CD5 is expressed on T-cell malignancies, Bcell chronic lymphocytic leukemia (CLL)/small lymphocytic lymphoma (SLL), and mantle-cell lymphoma. It is a useful diagnostic tool for these tumors. In addition, anti-CD5 is helpful in diagnosis of thymic carcinoma (CD5 positive).

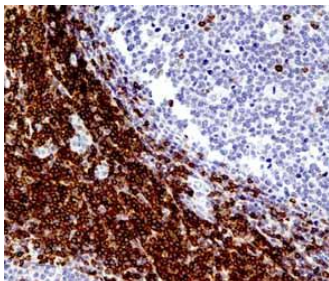
Specifications:

Clone: EP77
Source: Rabbit
Isotype: IgG
Reactivity: Human
Immunogen: A synthetic peptide corresponding to residues of human CD5 protein
Localization: Membrane
Formulation: Affinity purified antibody in PBS pH7.4, containing BSA and $\leq 0.09\%$ sodium azide (NaN₃)
Storage: Store at 2°- 8°C
Applications: IHC
Package:

Description	Catalog No.	Size
CD5 Concentrated	RM0047	1 ml
CD5 Prediluted	RM0047RTU7	7 ml

IHC Procedure*:

Positive Control Tissue: Tonsil, mantle cell lymphoma
Concentrated Dilution: 50-200
Pretreatment: Citrate pH6.0, 15 minutes using Pressure Cooker, or 30-60 minutes using water bath at 95°-99°C
Incubation Time and Temp: 30-60 minutes @ RT
Detection: Refer to the detection system manual
* Result should be confirmed by an established diagnostic procedure.



FFPE human tonsil stained with anti-CD5 using DAB

References:

1. Diagnostic Algorithm of Common Mature B-Cell Lymphomas by Immunohistochemistry. Wang HY et al. Arch Pathol Lab Med. 2017.
2. Multiple myeloma-associated skin light chain amyloidosis: A case of misdiagnosis. Xiao LI, et al. Oncol Lett 11:3617-3620, 2016.
3. Epstein-Barr virus positive diffuse large B-cell lymphoma predict poor outcome, regardless of the age. Lu TX, et al. Sci Rep 5:12168, 2015.

Doc. 100-RM0047
Rev. A