



PITCHED CURB



MODELS:
LS-SFP (STEEL)
LA-SFP (ALUMINUM)

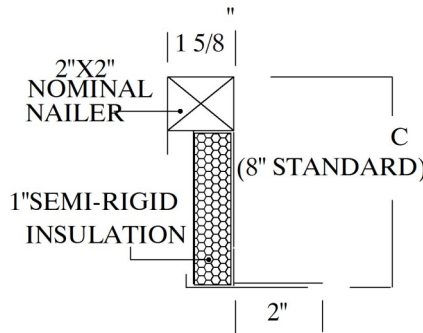
APPLICATION

The LS-SC/LA-SC is Lloyd's canted curb. LS-SC consists of a 16 gage galvanized steel, 3lb. Density 1" thick insulation and 2"x2" nominal wood nailer. The steel insulated curb is 8" high with 1" of insulation. LA-SC consists of aluminum alloy 3003-H-14, 3lb. Density 1" thick insulation and 2"x2" nominal wood nailer. The aluminum insulated curb is 8" high with 1" of insulation.

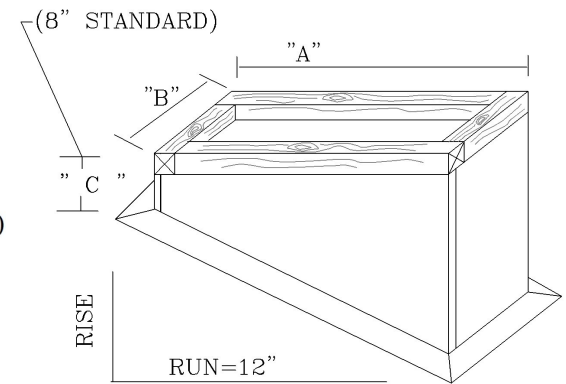
STANDARD CONSTRUCTION

Fabricated using 16 gage galvanized steel
4" Flashing Flange
Mill finish is standard
"C" dimension=8in. (standard)
Damper tray optional

Side	Minimum Size	Maximum Size
A	6"	72"
B	6"	72"
C	6"	Over 24" contact factory



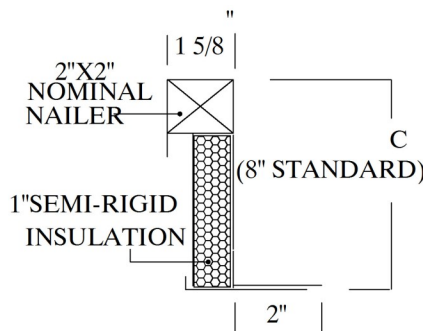
LS-SF STEEL CANTED CURB



STANDARD CONSTRUCTION

Fabricated using aluminum alloy 3003-H-14
3lb. Density 1" thick insulation
2"x2" nominal wood nailer
Mill finish is standard
"C" dimension=8in. (standard)
Damper tray optional

Side	Minimum Size	Maximum Size
A	6"	72"
B	6"	72"
C	6"	Over 24" contact factory



LA-SF ALUMINUM CANTED CURB

