

# U.S. in-hospital neonatal circumcision rates, 1997-2013

## Latest in-hospital neonatal circumcision rates (%) by state<sup>(a),(b)</sup>

	Latest	Year (a)	Source (b)
Alabama			
Alaska			
Arizona	16		
Arkansas	67		
California	23		
Colorado	56		
Connecticut	71	2009	Kids' Inpatient Database (KID)
Delaware			
District of Columbia			
Florida	31		
Georgia	72	2009	Kids' Inpatient Database (KID)
Hawaii	77		
Idaho			
Illinois	63		
Indiana	83		
Iowa	81		
Kansas	73		
Kentucky	86		
Louisiana	45	2012	SID County-level Statistics
Maine	70	2012	
Maryland	66		
Massachusetts	65	2012	
Michigan	84		
Minnesota	59		
Mississippi			
Missouri	75		
Montana	50	2009	Kids' Inpatient Database (KID)
Nebraska	75		
Nevada	10		
New Hampshire	76	2009	
New Jersey	65		
New Mexico	47		
New York	58		
North Carolina	50		
North Dakota	77		
Ohio	84	2009	Kids' Inpatient Database (KID)
Oklahoma	75		
Oregon	17		
Pennsylvania	79	2012	SID County-level Statistics
Rhode Island	75	2012	
South Carolina	72		
South Dakota	77	2009	Kids' Inpatient Database (KID)
Tennessee	74		
Texas	51		
Utah	33		
Vermont	67		
Virginia	74	2009	Kids' Inpatient Database (KID)
Washington	10		
West Virginia	91		
Wisconsin	81		
Wyoming	73		
<b>USA SID estimate</b>	<b>55</b>	2013	State Inpatient Databases (SID)
<b>USA NIS estimate</b>	<b>56</b>	2013	National Inpatient Sample (NIS)
<b>USA KID estimate</b>	<b>55</b>	2012	Kids' Inpatient Database (KID)

(a) 2013 except where otherwise stated

(b) State Inpatient Databases (SID) except where otherwise stated

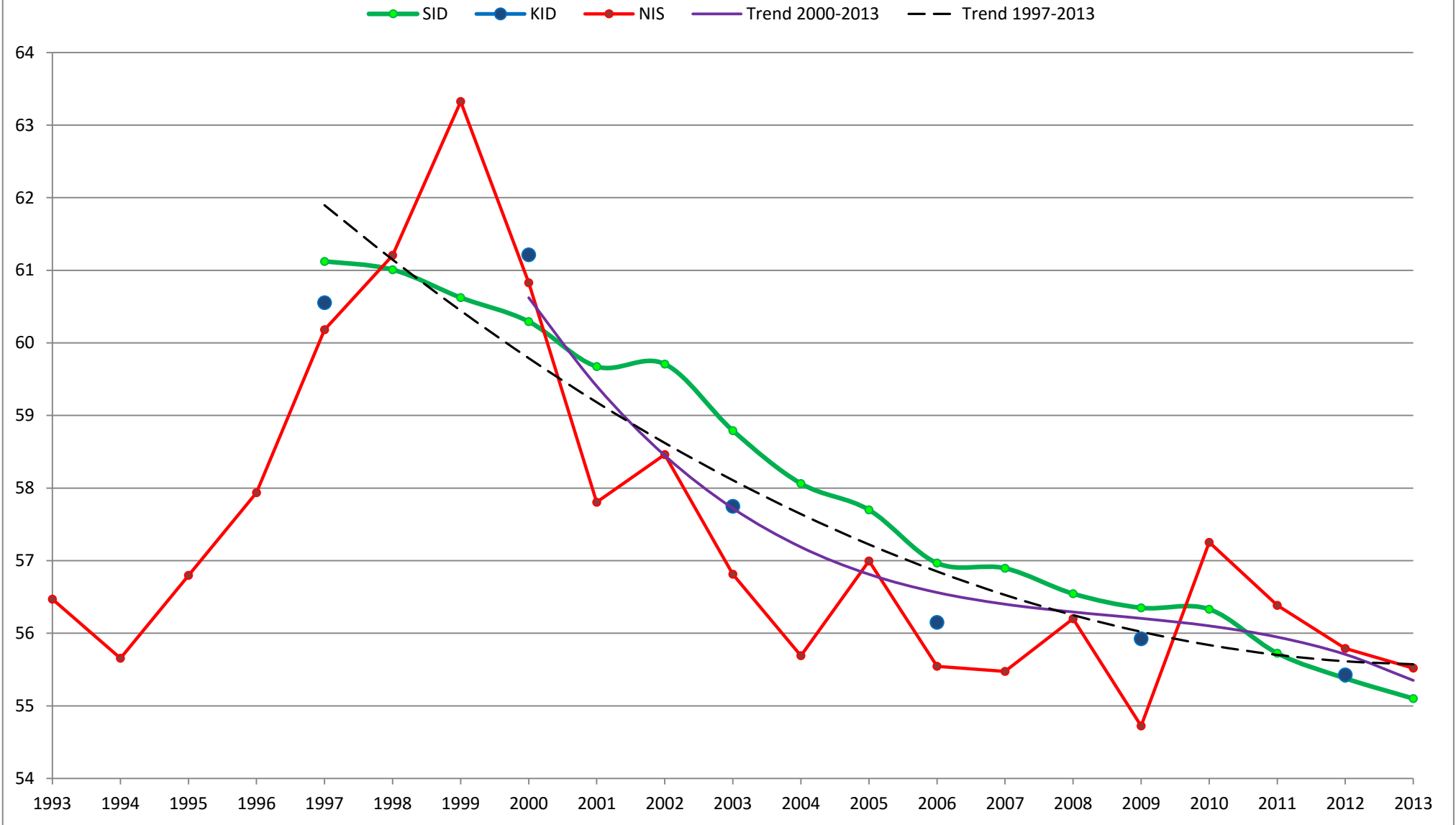
## In-hospital neonatal circumcision rates (%) by state, 1997-2013

	2013	2012	2011	2010	2009	2008	2007	2006	2005	2004	2003	2002	2001	2000	1999	1998	1997
Alabama																	
Alaska																	
Arizona	16	17	19	20	20	21	22	23	24	25	26	39	41	39	38	39	35
Arkansas	67	67	67	67	66	66	67	66	66	67							
California	23	23	22	22	22	22	22	22	21	21	22	21	22	22	23	23	22
Colorado	56	56	61	65	64	64	64	63	63	63	63	63	63	65	66	68	69
Connecticut					71			73			77	72	70	80	78	80	
Delaware																	
District of Columbia																	
Florida	31	32	33	34	34	36	36	38	38	39	44	47	47	48	49	50	48
Georgia					72			72			75	80	74	78	79	76	
Hawaii	77	77	79	79	78	77	79	80	81	82	83	83	84	83	84	85	86
Idaho																	
Illinois	63	63	64	64	63			60			64	61	64	66	60	59	
Indiana	83	85	86		82			82			82						
Iowa	81	81	82	82	82	81	82	82	82	82	81	82	82	83	83	83	84
Kansas	73	75	75	75	76	77	75	76	76	77	76	76	75	75	76	78	81
Kentucky	86	85	86	85	84	81	84	80	84	85	84	84	85	87			
Louisiana		45	45		42												
Maine		70	67	68	67	66	64	63			72	71	71	73	72		
Maryland	66	67	69	72	72	72	73	73	74		83	82	76	79	76	80	
Massachusetts		65	66	66	66	66	67	66	67	67	67	67	66	67	67	70	70
Michigan	84	83	85	85	85	85	85	85	85	85	85	85	85				
Minnesota	59	58	59	62	63	65	67	70	77	77	74	73	73				
Mississippi																	
Missouri	75	75	76	76	76	77	76	77	77	78	79	83	84	85	88	80	
Montana					50												
Nebraska	75	76	83	83	83	83	84	80	79	81	81	81	81				
Nevada	10	10	11	11	13	12	12	13	14	14	15	17					
New Hampshire					76	76	76	76	76	76	75						
New Jersey	65	65	65	66	66	67	66	66	66	67	68	69	69	71	72	74	74
New Mexico	47	46	47	49	48												
New York	58	58	58	59	59	58	59	59	59	59	60	60	59	59	60	62	62
North Carolina	50	51	51	52	52	54	55	56	58	58	61	74	75	77			
North Dakota	77	82	78														
Ohio					84			84			84	85					
Oklahoma	75	75	76	76	76	76	74	72	71								
Oregon	17	18	19	20	24	25	26	27	28	30	31	34	35	37	38	41	40
Pennsylvania		79	80		80						83	85	79	81	83	87	
Rhode Island		75	75	76	75	62	74	74	74	74	72	74	80				
South Carolina	72	71	71	81	81	80	82	82	83	83	85	85	86	86	87	88	88
South Dakota					77			77			91	81					
Tennessee	74	74	75	76	76	76	76	76	78	78	79	80	80	78	78	77	
Texas	51	51	50	50	50	49	49	49			49	45	50	49			
Utah	33	35	37	39	42	46	48	49	51	53	62	68	68	70	70	70	69
Vermont	67	67	66	65	64	65	66	66	66	68	72	73	71				
Virginia					74			76			74	83	71	72	79		
Washington	10	11	12	14	15	19	21	23	24	26	26	27	28	29	29	31	33
West Virginia	91	90	87	86	86	85	85	85	82	83	79	84	85	87			
Wisconsin	81	80	81	82	82	82	82	82	83	83	84	84	84	84	84	84	
Wyoming	73	69	70	77	79	82	80										
<b>USA SID estimate</b>	<b>55</b>	<b>55</b>	<b>56</b>	<b>56</b>	<b>56</b>	<b>57</b>	<b>57</b>	<b>57</b>	<b>58</b>	<b>58</b>	<b>59</b>	<b>60</b>	<b>60</b>	<b>60</b>	<b>61</b>	<b>61</b>	<b>61</b>
<b>USA NIS estimate</b>		<b>56</b>	<b>56</b>	<b>57</b>	<b>55</b>	<b>56</b>	<b>55</b>	<b>56</b>	<b>57</b>	<b>56</b>	<b>57</b>	<b>58</b>	<b>58</b>	<b>61</b>	<b>63</b>	<b>61</b>	<b>60</b>
<b>USA KID estimate</b>		<b>55</b>			<b>56</b>			<b>56</b>			<b>58</b>			<b>61</b>			<b>61</b>

### Key to sources of figures

17	State Inpatient Databases (SID)	<a href="http://www.hcup-us.ahrq.gov/sidoverview.jsp">http://www.hcup-us.ahrq.gov/sidoverview.jsp</a>
79	SID County-level Statistics	<a href="http://hcupnet.ahrq.gov/">http://hcupnet.ahrq.gov/</a>
71	Kids' Inpatient Database (KID)	<a href="http://www.hcup-us.ahrq.gov/kidoverview.jsp">http://www.hcup-us.ahrq.gov/kidoverview.jsp</a>
77	National Inpatient Sample (NIS)	<a href="http://www.hcup-us.ahrq.gov/nisoverview.jsp">http://www.hcup-us.ahrq.gov/nisoverview.jsp</a>

### Estimated in-hospital neonatal circumcision rate (%), USA, 1993-2013



Source for all figures: Healthcare Cost and Utilization Project (HCUP), Agency for Healthcare Research and Quality, U.S. Department of Health & Human Services, <http://hcupnet.ahrq.gov/>

# Two-way Tables of Circumcision Rates (%), USA 2012<sup>1</sup>

## Circumcision Rates by Payer and Other Category

	Private insurance	Medicaid	All
Not low zipcode median income	66	46	<b>57</b>
Low zipcode median income	63	47	<b>51</b>
Large central metro	55	36	<b>44</b>
Suburbs	71	50	<b>62</b>
Medium and small metro	68	48	<b>57</b>
Rural	74	61	<b>66</b>
New England	72	64	<b>68</b>
Middle Atlantic	71	59	<b>66</b>
East North Central	81	76	<b>78</b>
West North Central	78	67	<b>73</b>
South Atlantic	70	46	<b>57</b>
East South Central	85	77	<b>79</b>
West South Central	69	44	<b>54</b>
Mountain	47	19	<b>34</b>
Pacific	36	8	<b>22</b>
<b>All</b>	<b>65</b>	<b>46</b>	<b>56</b>

## Circumcision Rates by Median Income of Patient ZIP Code and Other Category

	Not low	Low	All
Private insurance	66	63	<b>65</b>
Medicaid	46	47	<b>46</b>
Large central metro	45	42	<b>44</b>
Suburbs	63	52	<b>62</b>
Medium and small metro	61	50	<b>57</b>
Rural	68	64	<b>66</b>
New England	70	60	<b>68</b>
Middle Atlantic	67	63	<b>66</b>
East North Central	78	79	<b>78</b>
West North Central	74	68	<b>73</b>
South Atlantic	59	52	<b>57</b>
East South Central	82	76	<b>79</b>
West South Central	62	43	<b>54</b>
Mountain	38	24	<b>34</b>
Pacific	25	8	<b>22</b>
<b>All</b>	<b>0</b>	<b>0</b>	<b>0</b>

## Circumcision Rates by Patient Residence and Other Category

	Large central metro	Suburbs	Medium and small metro	Rural	All
New England	67	67	71	65	<b>68</b>
Middle Atlantic	55	67	78	83	<b>66</b>
East North Central	69	79	83	84	<b>78</b>
West North Central	57	77	75	73	<b>73</b>
South Atlantic	45	58	59	65	<b>57</b>
East South Central	73	87	79	79	<b>79</b>
West South Central	50	66	49	59	<b>54</b>
Mountain	20	57	40	39	<b>34</b>
Pacific	24	24	17	23	<b>22</b>
Not low zipcode median income	45	63	61	68	<b>57</b>
Low zipcode median income	42	52	50	64	<b>51</b>
Private insurance	55	71	68	74	<b>65</b>
Medicaid	36	50	48	61	<b>46</b>
<b>All</b>	<b>44</b>	<b>62</b>	<b>57</b>	<b>66</b>	<b>56</b>

## Circumcision Rates by Census Division<sup>2</sup> and Other Category

	New England	Middle Atlantic	East North Central	West North Central	South Atlantic	East South Central	West South Central	Mountain	Pacific	All
Large central metro	67	55	69	57	45	73	50	20	24	<b>44</b>
Suburbs	67	67	79	77	58	87	66	57	24	<b>62</b>
Medium and small metro	71	78	83	75	59	79	49	40	17	<b>57</b>
Rural	65	83	84	73	65	79	59	39	23	<b>66</b>
Not low zipcode median income	70	67	78	74	59	82	62	38	25	<b>57</b>
Low zipcode median income	60	63	79	68	52	76	43	24	8	<b>51</b>
Private insurance	72	71	81	78	70	85	69	47	36	<b>65</b>
Medicaid	64	59	76	67	46	77	44	19	8	<b>46</b>
<b>All</b>	<b>68</b>	<b>66</b>	<b>78</b>	<b>73</b>	<b>57</b>	<b>79</b>	<b>54</b>	<b>34</b>	<b>22</b>	<b>56</b>

### 1) Source:

National Inpatient Sample (NIS) and Kids' Inpatient Database (KID)  
Healthcare Cost and Utilization Project (HCUP),  
Agency for Healthcare Research and Quality,  
U.S. Department of Health & Human Services  
<http://hcupnet.ahrq.gov/>

### 2) Census Divisions:

**New England** Connecticut, Maine\*, Massachusetts, New Hampshire\*, Rhode Island, Vermont

**Middle Atlantic** New Jersey, New York, Pennsylvania

**East North Central** Illinois, Indiana, Michigan, Ohio, Wisconsin

**West North Central** Iowa, Kansas, Minnesota, Missouri, Nebraska, North Dakota, South Dakota

**South Atlantic** Delaware\*, District of Columbia\*, Florida, Georgia, Maryland, North Carolina, South Carolina, Virginia, West Virginia

**East South Central** Alabama\*, Kentucky, Mississippi\*, Tennessee

**West South Central** Arkansas, Louisiana, Oklahoma, Texas

**Mountain** Arizona, Colorado, Idaho\*, Montana, Nevada, New Mexico, Utah, Wyoming

**Pacific** Alaska, California, Hawaii, Oregon, Washington

\* Not included in data.