

Weekly Commodities Charts Newsletter

June 26, 2017

The Weekly Commodities Charts Newsletter provides Cornelius Luca's trade ideas, model signals, and absolute charts

© 2017 Luca Global Markets, LLC. All rights reserved. This content is provided as general information only and does not constitute investment advice or a representation that any investment, security or other product is suitable for any person. This content reflects the opinions only of the author and cannot be interpreted as advice.

This content is the intellectual property of Cornelius Luca. Any copying, distribution or redistribution of this content is expressly prohibited without the prior written consent of Cornelius Luca.

Cornelius Luca shall not be liable for any errors in the content, or for any actions taken in reliance thereon.

Trade Ideas

- Energy: Short crude oil *while below* the 10-day exponential moving average
- Metals: Short gold *while below* the 21-day exponential moving average
- Softs: Short soy meal *while below* the 21-day exponential moving average

Commodities Models – Daily & Weekly

	<i>Commodity</i>	<i>Daily Model</i>	since	Daily Bias (> or < 21-day EMA)	Daily Risk	<i>Weekly Model</i>	since	Weekly Bias (> or < 21-week EMA)	Weekly Risk
Energy	Crude Oil	L	23-Jun	bearish	slightly bullish	S	30-May	bearish	slightly bearish
	Brent Crude	L	23-Jun	bearish	slightly bullish	S	26-May	bearish	slightly bearish
	Natural Gas	L	23-Jun	slightly bearish	slightly bullish	L	26-Jun	slightly bearish	slightly bullish
Metals	Gold	S	26-Jun	bearish	slightly bearish	S	7-Jun	sideways	slightly bearish
	Silver	S	26-Jun	bearish	slightly bearish	S	7-Jun	slightly bearish	slightly bearish
	Copper	L	21-Jun	slightly bullish	slightly bullish	L	26-Jun	slightly bullish	slightly bullish
Softs	Coffee	L	23-Jun	bearish	slightly bullish	L	26-May	bearish	slightly bullish
	Soy Meal	L	26-Jun	bearish	slightly bullish	S	12-Jun	bearish	slightly bearish
	Wheat	S	21-Jun	slightly bullish	slightly bearish	S	26-Jun	slightly bullish	slightly bearish
	Corn	L	26-Jun	bearish	slightly bullish	S	19-Jun	slightly bearish	slightly bearish

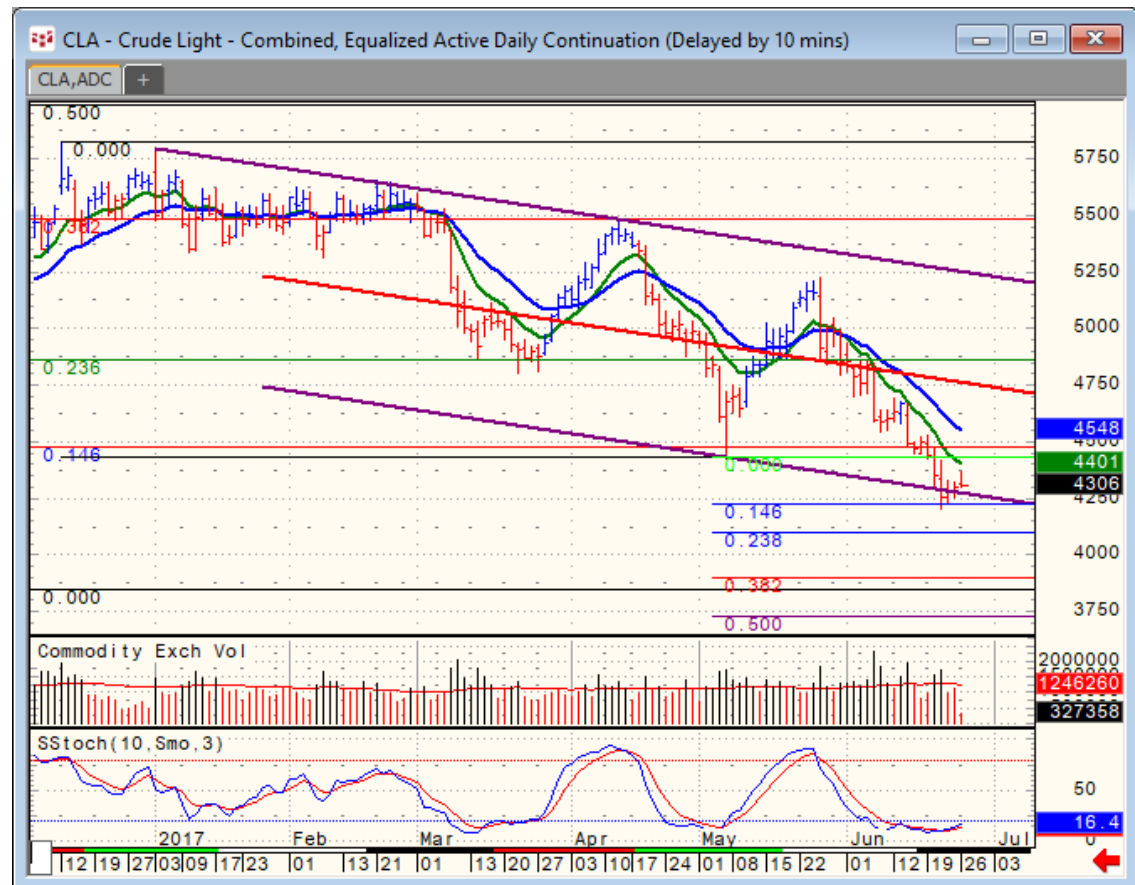
Source: Proprietary Luca Global Markets, LLC Model

Commodities Energy Trade Idea

Comment:

Short crude oil *while below the 10-day EMA*

- Crude oil extended its losses to a 16-month low after failing to find a base
- It trades well below its 21-day EMA & the market is short; therefore, only a break above the 10-day EMA should trigger short covering
- Initial support: 42.05
- Further support: 40.98 & 38.97 & 37.32
- Initial resistance: 44.03
- Further resistance: 45.501, 46.79 & 48.07
- Fast stochastics: slightly bullish



CQG Inc. © 2017 All rights reserved worldwide. <http://www.cqg.com>

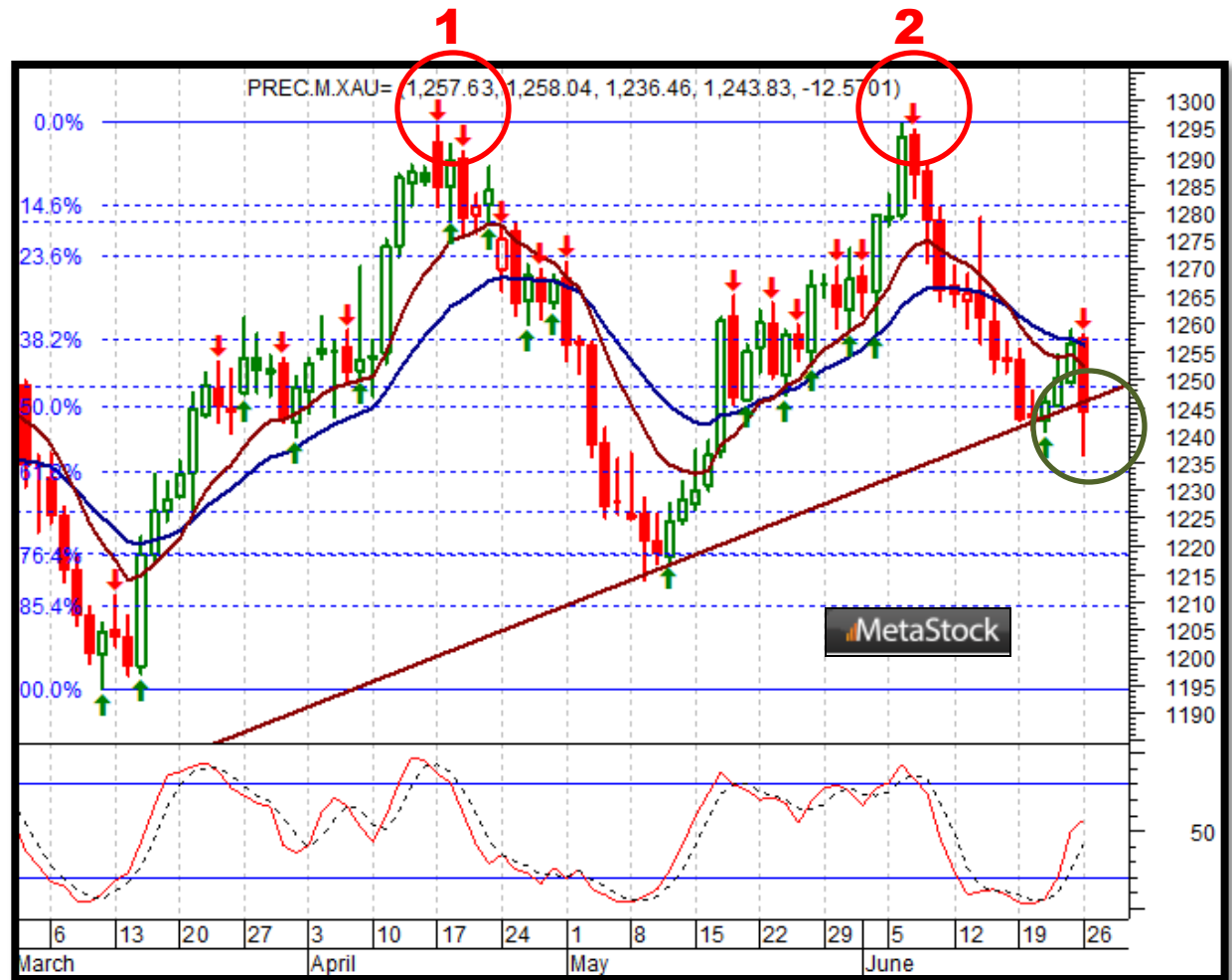
Mon Jun 26 2017 09:38:17, CQG 17.12.860

Commodities Metals Trade Idea

Comment:

Short gold *while* below the 21-day EMA

- Gold extended its losses to a 1 ½-month low after its 3-day recovery last week was capped by its 21-day EMA
- It now struggles with the support line rising since 12/19
- Immediate support: 1,236
- Further support: 1,225 & 1,214
- Initial resistance: 1,259
- Further resistance: 1,296 & 1,337
- Fast stochastics: bullish



Soft Commodities Trade Idea

Comment:

Short soy meal while below the 21-day EMA

- Soy meal accelerated losses to a 14-month low
 - It trades well below its 21-day EMA and is oversold
 - Immediate support: 292
 - Further support: 285.90 & 280.70 & 276.60
 - Initial resistance: 297.40
 - Further resistance: 300.40 & 309.80
- Fast stochastics: bearish



How to Use the Heat Map

Bias: If the Candle > 21-period EMA = bullish
 If the Candle < 21-period EMA = bearish
 If the Candle around 21-period EMA = sideways

Long or Short	Commodities	Since when		Risk: Bullish or Bearish Candle as of Monday am EST					
		Daily Model	since	Daily Bias (> or < 21-day EMA)	Daily Risk	Weekly Model	since	Weekly Bias (> or < 21-week EMA)	Weekly Risk
Energy	Crude (CLc1)	S	27-Apr	bullish	slightly bullish	L	23-Mar	slightly bearish	slightly bullish
	Brent (LCOc1)	L	21-Apr	slightly bullish	slightly bullish	L	6-Apr	slightly bearish	slightly bullish
	Natural gas (NGc1)	S	23-Apr	bearish	bearish	S	20-Apr	bearish	slightly bearish
	Palm oil (FCPOc1)	L	24-Apr	sideways	neutral	S	20-Apr	slightly bearish	slightly bearish
Metals	Gold (GCc1)	S	24-Apr	bearish	bearish	S	20-Mar	slightly bearish	slightly bearish
	Silver (SIc1)	S	22-Apr	bearish	bearish	S	24-Apr	bearish	bearish
	Platinum (PLc1)	S	20-Apr	bearish	bearish	S	20-Mar	bearish	slightly bullish
	Copper (HGc1)	L	24-Apr	slightly bearish	slightly bullish	S	24-Apr	slightly bearish	slightly bearish
Softs	Coffee (KCN5)	L	24-Apr	sideways	neutral	L	24-Apr	slightly bullish	slightly bullish
	Cocoa (LCCN5)	L	23-Apr	bullish	bullish	L	13-Apr	bullish	bullish
	Soy meal (SMN5)	S	24-Apr	bearish	slightly bearish	S	24-Apr	bearish	slightly bearish
	Wheat (WN5)	S	24-Apr	bearish	slightly bearish	S	24-Apr	bearish	bearish
	Corn (CN5)	S	20-Apr	bearish	bearish	S	6-Apr	bearish	bearish

Source: Proprietary Luca Global Markets, LLC Model

L = long
 S = short