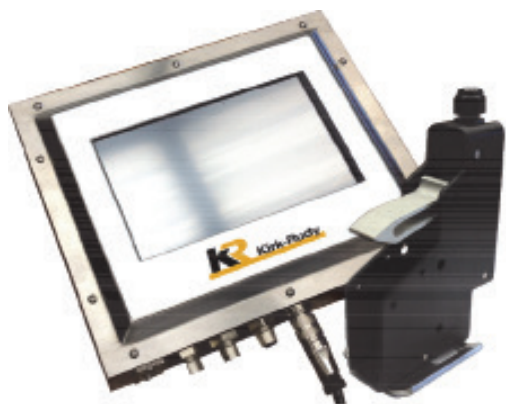


PackJet X1

255EXP6/16

CIP. 03400935974419
LOT 09A33E17R
10/2012
10/2009

FEB 16 1
LPE 1520



High Resolution Printing

proven and dependable performance

The 1/2" PackJet X1 all-in-one print head and screen give you a simple, yet incredibly powerful way to print up to 1/2" of print with the minimum of effort. The system, comprising of a 7" screen and attached print head allows you to be up and running within minutes.

Using Kirk-Rudy's proven and highly reliable print solutions based on HP technology, the PackJet X1 is the ideal product for serialization, barcodes, and human readable printing.

- No mess, no maintenance HP & KR Technology
- Rugged industrial design for the most demanding installations
- Variable and fixed data capability
- SQL Database connectivity
- Simple ASCII interface to supply dynamic data from scanners & PLC's
- Offline job creation
- Networkable--can be connected to company network

1/2" all-in-one print solution

Inks

options to suit every need

Whether printing on matte stocks or glossy finishes, Kirk-Rudy provides inks that dry quickly, are water resistant, and adhere to the most difficult substrates. From papers to plastics, Kirk-Rudy has the ink solution for you.



200 GROSS KG 219
31320714 - B

Lifetime Warranty

for your peace of mind

Kirk-Rudy provides a Lifetime Warranty for its managed print products. Should the product fail to be in good working order for the products entire life cycle, Kirk-Rudy will repair or replace this at no charge.



All Inclusive Solutions

simple to install

Kirk-Rudy's PackJet X1 heads are manufactured from an aluminium casing with an all metal design for maximum durability. With an industrial touch screen for its User interface, it will stand up well in any environment.

The PackJet X1 has connections for encoders and sensors as well as an Ethernet port for connecting to external data source and networks. It comes complete with:

- 1/2" Print Head
- 7" Touch Screen (with Design & Management Software)
- Power Supply
- Connection cables
- VESA pivot mount

Additional equipment that connects directly to the PackJet X1 systems includes:

- Sensor
- Encoder
- Fixed pen mounting kit
- Hand Held Barcode Scanner for message selection
- Bulk Ink Regulator and Ink Holder with Empty Detect

External Connectivity includes:

- External I/O
- Serial Port (RS 232)
- USB
- Ethernet

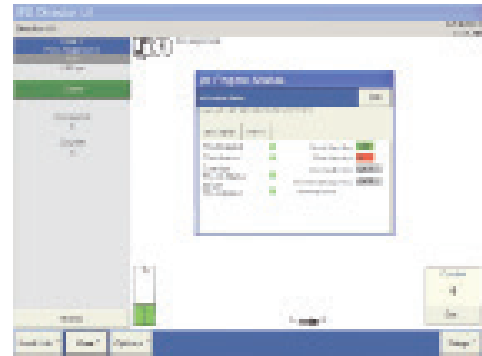
Print Specifications

Print Resolution		
600 dpi x 300 dpi		250 feet per minute
300 dpi x 300 dpi		500 feet per minute
Print Density		User configurable
Printable Items		
Barcode Capability	Static:	87 Types
	Dynamic:	9 Types
Other Printable Items		Lot Codes
		Date/Expiry Date
		Shift Codes
		Foreign Languages
		Bitmaps/Logos
		Fixed Text
		User Inserts
		Counter and Batch Numbers

Sophisticated Control

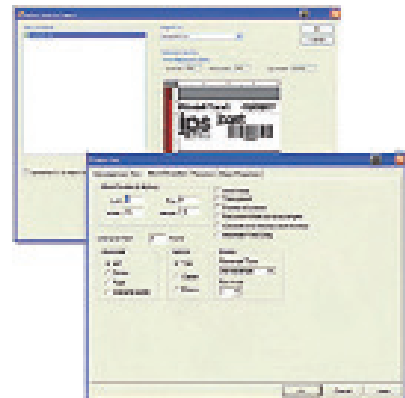
advanced design and management software

The Management software runs on the User Interface and provides printer configuration, control and monitor. The interface allows the user to monitor a wide variety of operating conditions, including job types and counts and even ink usage, all in real-time.



Manage and Load Jobs

The template creation software separates template creation and control from day to day printing processes. Operating on any computer running Windows, it permits the creation of print templates that can be exported into the User Interface via an Ethernet connection or by using a USB thumb drive.



Design Print Template

**Specifications subject to change with out notice

