

Weekly Major Equity Indexes Charts Newsletter

October 30, 2017

The Weekly Equity Indexes Charts Newsletter provides Cornelius Luca's trade ideas, model signals, and absolute charts

© 2017 Luca Global Markets, LLC. All rights reserved. This content is provided as general information only and does not constitute investment advice or a representation that any investment, security or other product is suitable for any person. This content reflects the opinions only of the author and cannot be interpreted as advice.

This content is the intellectual property of Cornelius Luca. Any copying, distribution or redistribution of this content is expressly prohibited without the prior written consent of Cornelius Luca.

Cornelius Luca shall not be liable for any errors in the content, or for any actions taken in reliance thereon.

Trade Ideas

- G7: Long the S&P 500 *while* above the 5-day exponential moving average
- G7: Long DAX *while above* the 5-day exponential moving average
- BRIC: Long India's BSE Sensex while above the 5-day EMA

G7 Equity Indexes

Model Signals - Daily & Weekly

<i>G7 Index</i>	<i>Daily Model</i>	since	Daily Bias (> or < 21-day EMA)	Daily Risk	<i>Weekly Model</i>	since	Weekly Bias (> or < 21-week EMA)	Weekly Risk
S&P 500	S	30-Oct	bullish	slightly bearish	S	30-Oct	bullish	slightly bearish
Germany DAX	L	23-Oct	bullish	slightly bullish	L	8-Sep	bullish	bullish
UK FTSE	S	30-Oct	slightly bearish	slightly bearish	S	26-Oct	slightly bullish	slightly bearish
France CAC	L	20-Oct	bullish	slightly bullish	L	11-Sep	bullish	slightly bullish
Italy Borsa Italiana	L	30-Oct	slightly bullish	slightly bullish	L	23-Oct	bullish	slightly bullish

Source: Proprietary Luca Global Markets, LLC Model

S&P 500

Comment:

Long the S&P 500 while above the 5-day EMA

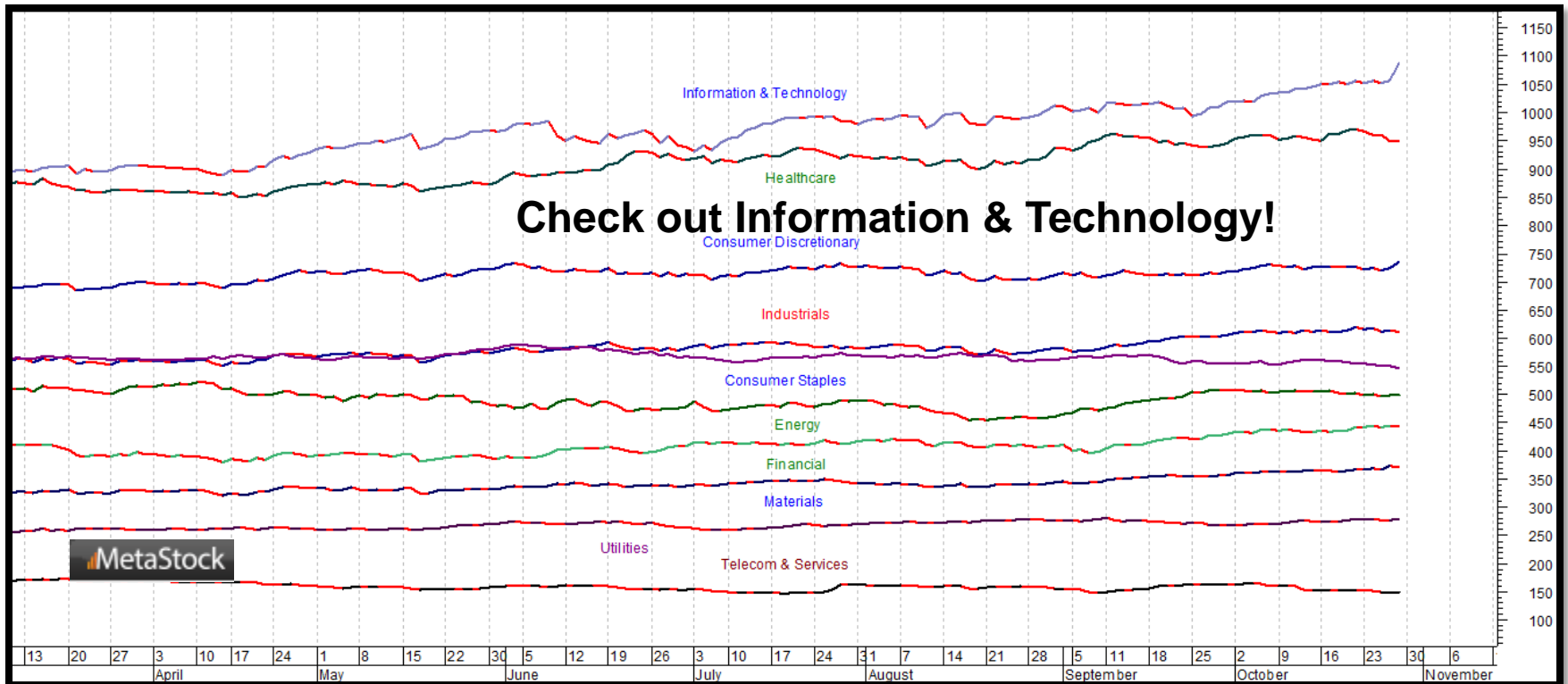
- The S&P 500 is consolidating near new records
- It remains overbought, of course, but only a break below the 5-day EMA would suggest profit taking to the 21-day EMA
- The new target for EW Wave 5 is 2,617
- Initial resistance: 2,578
- Further resistance: 2,595 & 2,617
- Immediate support: 2,567
- Further support: 2,544, 2,515, 2,491 & 2,460
- Fast stochastics: slightly bullish
- MACD: slightly bearish >0



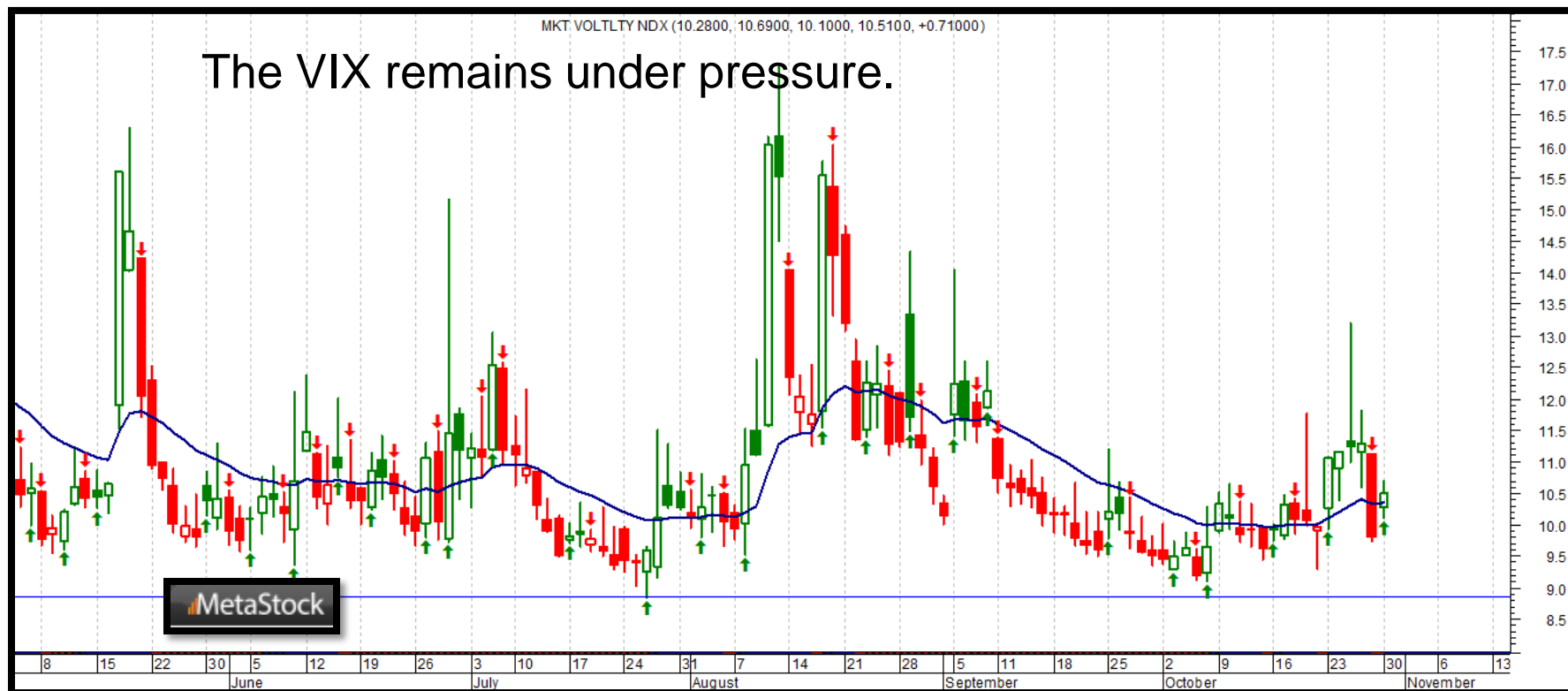
CQG Inc. © 2017 All rights reserved worldwide. <http://www.cqg.com>

Mon Oct 30 2017 11:52:33, CQG 17.12.860

S&P 500 Sectors



S&P 500 - VIX

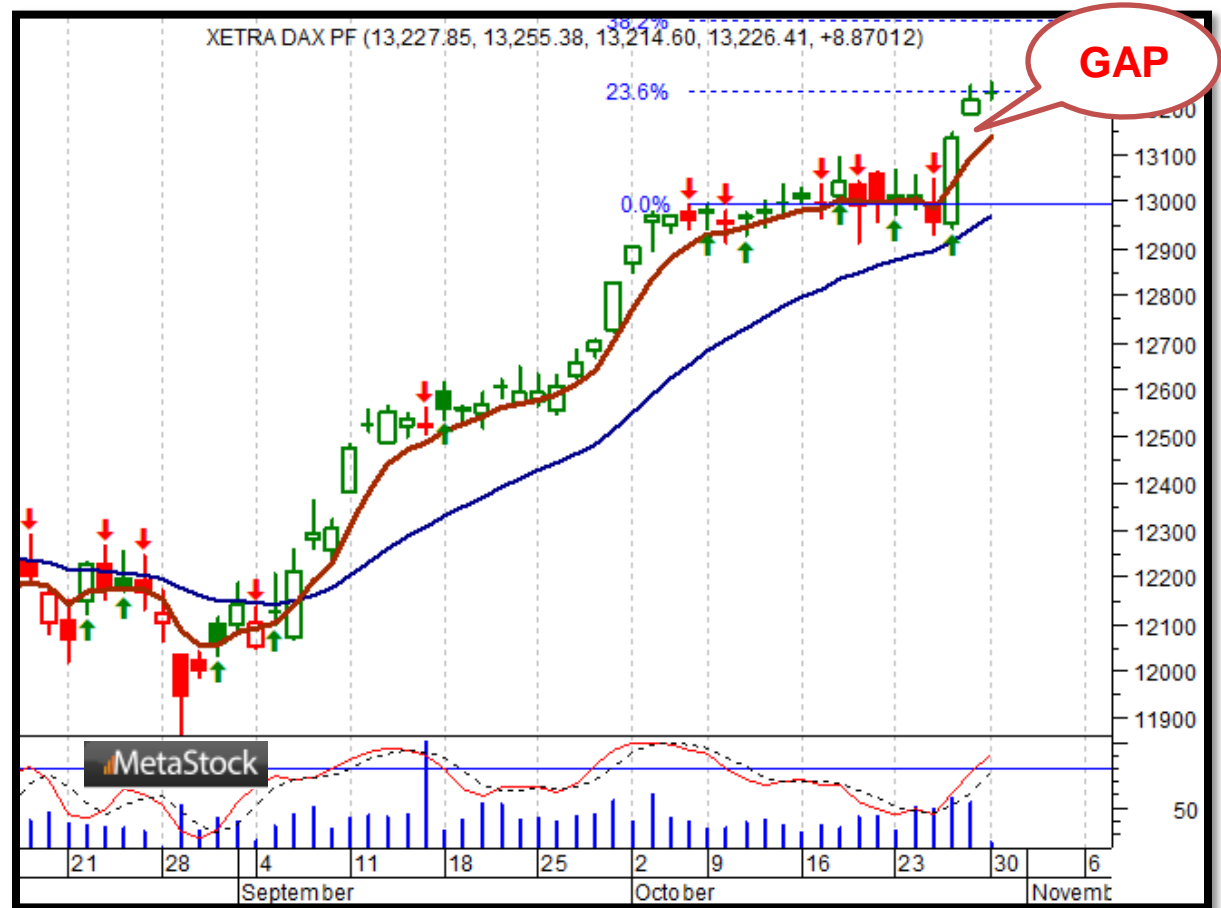


G7 Equity Index Trade Idea

Comment:

Long DAX while above the 5-day EMA

- The DAX is powering to record highs
- It's holding above its 5-day EMA
- Only a drop below the 5-day EMA would signal profit taking toward the 21-day EMA
- Initial resistance: 13,255
- Further resistance: 13,387 & 13,504
- Immediate support: 13,140
- Further support: 12,969, 12,829, 12,489 & 12,364
- Fast stochastics: bullish



BRIC Equity Indexes

Model Signals - Daily & Weekly

<i>BRIC Index</i>	<i>Daily Model</i>	<i>since</i>	<i>Daily Bias (> or < 21-day EMA)</i>	<i>Daily Risk</i>	<i>Weekly Model</i>	<i>since</i>	<i>Weekly Bias (> or < 21-week EMA)</i>	<i>Weekly Risk</i>
Brazil	S	26-Oct	slightly bearish	slightly bearish	S	9-Oct	slightly bearish	slightly bearish
Russia	L	30-Oct	slightly bearish	slightly bullish	S	9-Oct	slightly bullish	slightly bearish
India	L	24-Oct	bullish	bullish	L	6-Oct	bullish	bullish
China-Shanghai	L	24-Oct	bullish	bullish	L	9-Oct	bullish	bullish

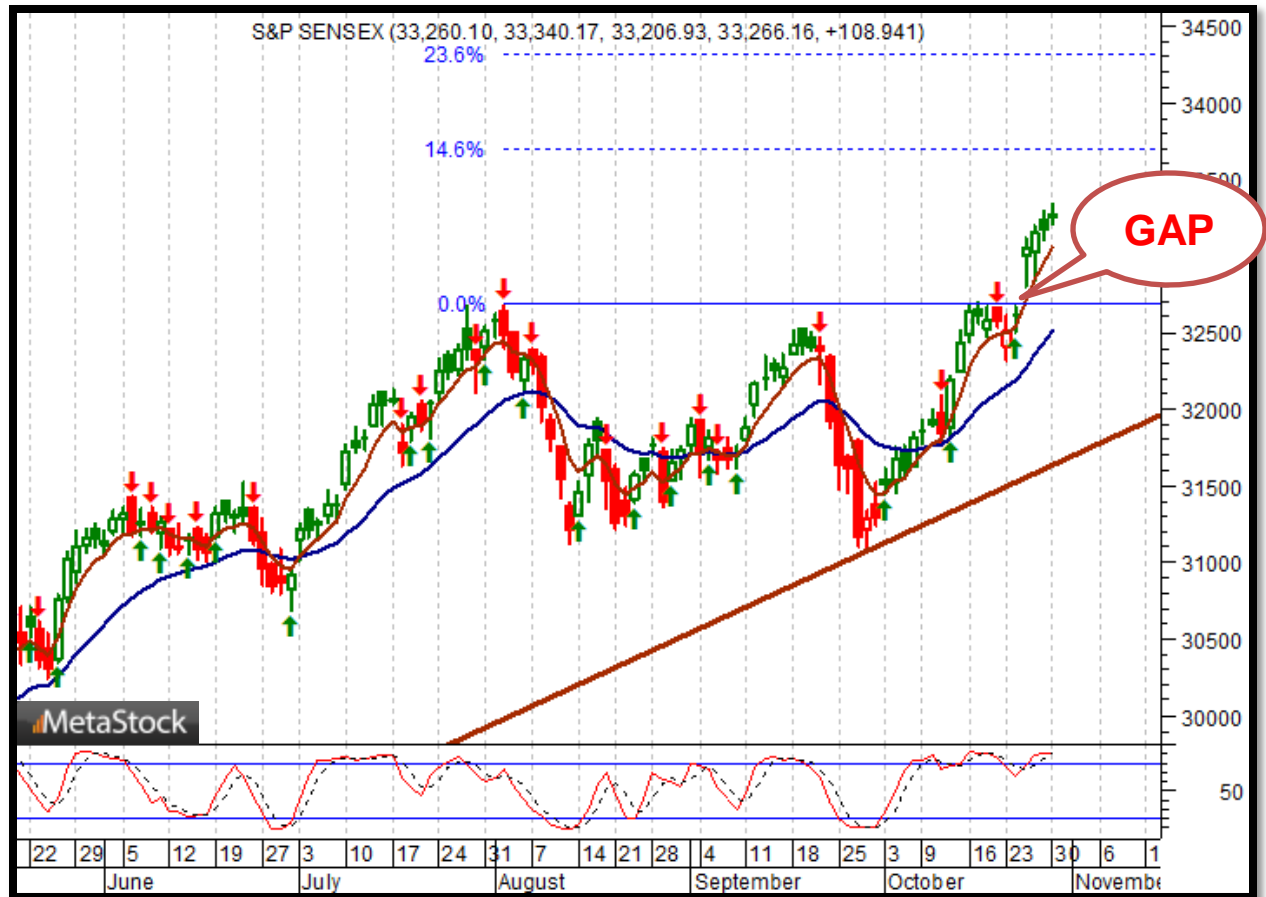
Source: Proprietary Luca Global Markets, LLC Model

BRIC Equity Index Trade Idea

Comment:

Long BSE Sensex while above the 5-day EMA

- The BSE gapped up on 10/26 and it's been marking new record highs
- Only a break below the 5-day EMA would suggest profit taking to its 21-day EMA
- Initial resistance: 33,680
- Further resistance: 34,317
- Immediate support: 33,057
- Further support: 32,700 & 32,510
- Fast stochastics: bullish



How to Use the Heat Map

Bias: If the Candle > 21-period EMA = bullish
 If the Candle < 21-period EMA = bearish
 If the Candle around 21-period EMA = sideways

Long or Short

Since when

Risk: Bullish or Bearish
 Candle as of Monday am EST

	Commodities	Daily Model	since	Daily Bias (> or < 21-day EMA)	Daily Risk	Weekly Model	since	Weekly Bias (> or < 21-day EMA)	Weekly Risk
Energy	Crude (CLc1)	S	27-Apr	bullish	slightly bullish	L	23-Mar	slightly bearish	slightly bullish
	Brent (LCOc1)	L	21-Apr	slightly bullish	slightly bullish	L	6-Apr	slightly bearish	slightly bullish
	Natural gas (NGc1)	S	23-Apr	bearish	bearish	S	20-Apr	bearish	slightly bearish
	Palm oil (FCPOc1)	L	24-Apr	sideways	neutral	S	20-Apr	slightly bearish	slightly bearish
Metals	Gold (GCc1)	S	24-Apr	bearish	bearish	S	20-Mar	slightly bearish	slightly bearish
	Silver (SIc1)	S	22-Apr	bearish	bearish	S	24-Apr	bearish	bearish
	Platinum (PLc1)	S	20-Apr	bearish	bearish	S	20-Mar	bearish	slightly bullish
	Copper (HGc1)	L	24-Apr	slightly bearish	slightly bullish	S	24-Apr	slightly bearish	slightly bearish
Softs	Coffee (KCN5)	L	24-Apr	sideways	neutral	L	24-Apr	slightly bullish	slightly bullish
	Cocoa (LCCN5)	L	23-Apr	bullish	bullish	L	13-Apr	bullish	bullish
	Soy meal (SMN5)	S	24-Apr	bearish	slightly bearish	S	24-Apr	bearish	slightly bearish
	Wheat (WN5)	S	24-Apr	bearish	slightly bearish	S	24-Apr	bearish	bearish
	Corn (CN5)	S	20-Apr	bearish	bearish	S	6-Apr	bearish	bearish

Source: Proprietary Luca Global Markets, LLC Model

L = long
 S = short