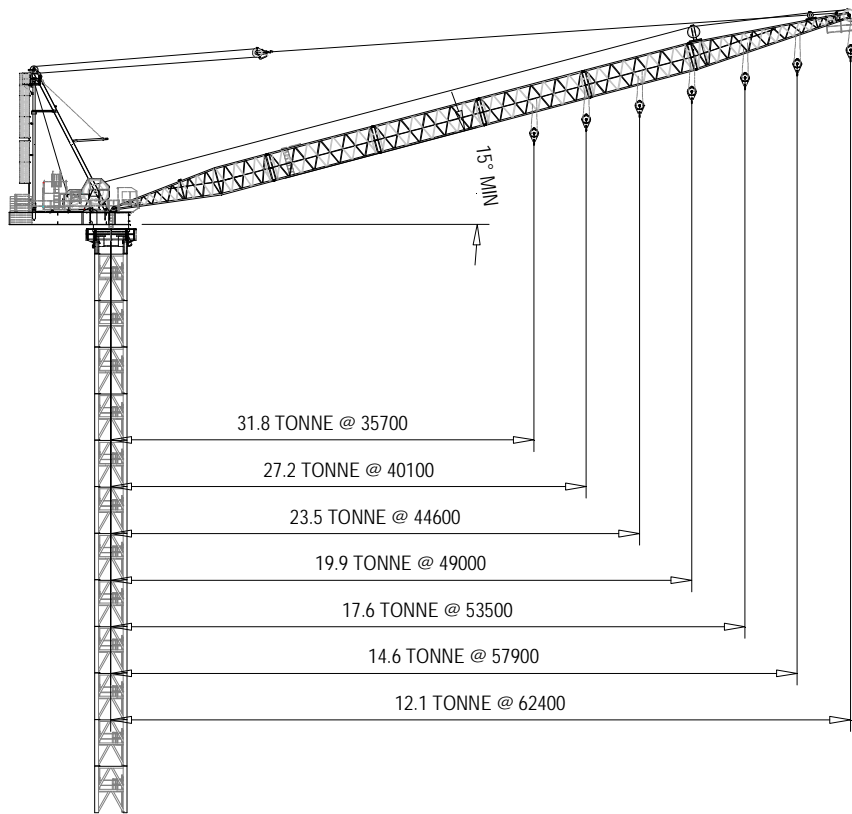


TECHNICAL DATA SHEET

M900F.H32



Design wind speed
In service - 20m/s
Out of service - 42m/s

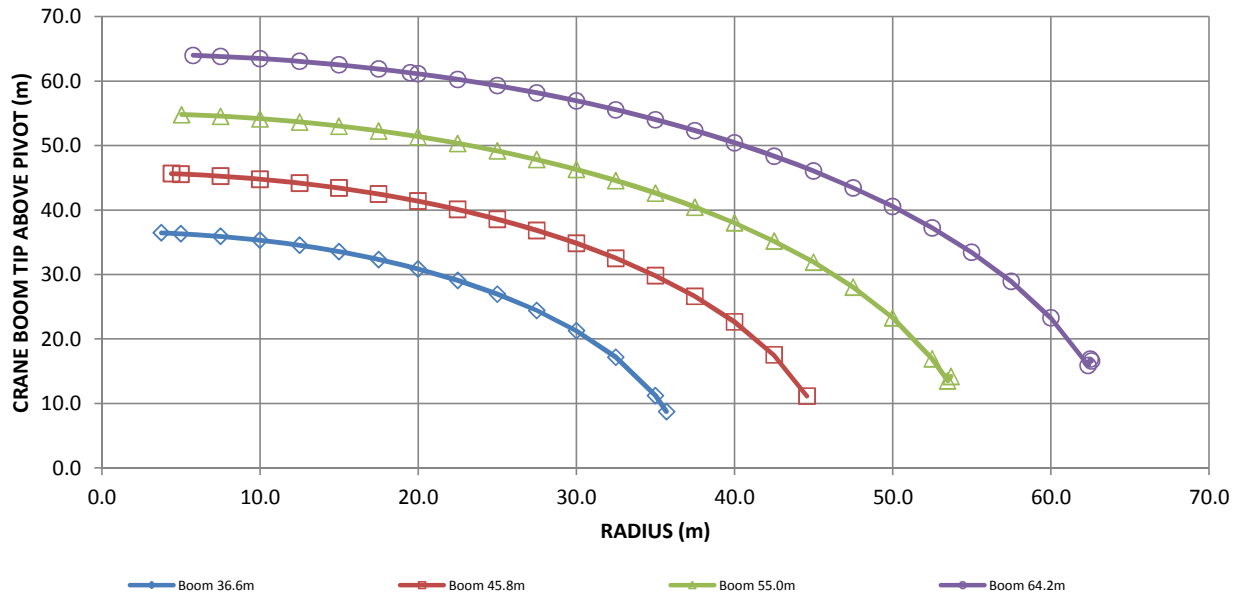
Various options in bottom structure configuration (such as freestanding, external climbing and internal climbing) and crane parking position available to suit site condition. Contact Favelle Favco sales and service representatives for consultation.

SAFE WORKING LOAD - HOIST WINCH 32 TONNE x 2-FALL

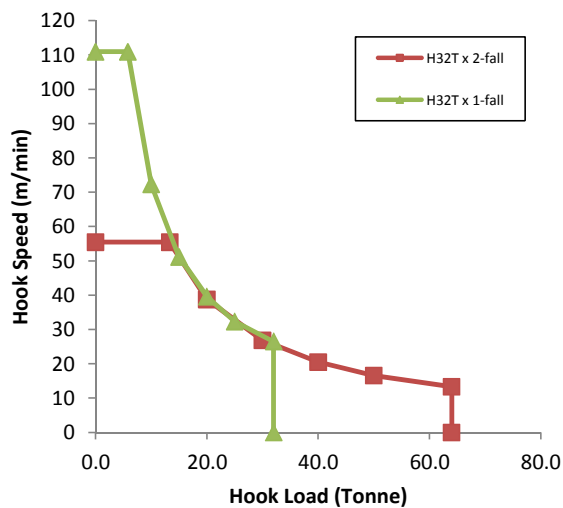
Boom Length	36.6		41.2		45.8		50.4		55.0		59.6		64.2	
Minimum Radius	3.8		4.1		4.4		4.7		5.1		5.4		5.7	
Radius	SWL	Angle	SWL	Angle	SWL	Angle	SWL	Angle	SWL	Angle	SWL	Angle	SWL	Angle
7.5	64.0	80.0	64.0	81.2	64.0	82.1	64.0	82.8	64.0	83.4	64.0	83.9	60.7	84.4
10.0	64.0	76.0	64.0	77.6	64.0	78.9	64.0	79.9	64.0	80.8	64.0	81.5	58.4	82.1
12.5	64.0	71.8	64.0	74.0	64.0	75.6	64.0	77.0	64.0	78.1	64.0	79.0	56.7	79.8
15.0	64.0	67.6	64.0	70.2	64.0	72.3	64.0	74.0	64.0	75.4	64.0	76.5	54.5	77.5
17.5	64.0	63.2	64.0	66.4	64.0	69.0	64.0	71.0	64.0	72.6	61.9	74.0	52.7	75.2
20.0	61.9	58.6	61.3	62.5	61.3	65.5	59.8	67.9	60.9	69.9	58.1	71.5	51.2	72.9
22.5	54.2	53.8	53.7	58.4	53.6	62.0	52.2	64.8	53.1	67.0	50.6	68.9	48.9	70.5
25.0	48.1	48.6	47.6	54.2	47.4	58.3	46.1	61.5	46.9	64.1	44.6	66.3	43.1	68.1
27.5	43.1	43.0	42.6	49.7	42.4	54.5	41.2	58.2	41.8	61.2	39.7	63.6	38.3	65.6
30.0	39.0	36.7	38.5	44.8	38.2	50.5	37.1	54.7	37.5	58.1	35.6	60.8	34.3	63.1
32.5	35.5	29.2	35.0	39.5	34.7	46.2	33.6	51.1	33.9	54.9	32.2	58.0	30.9	60.6
35.0	32.6	19.1	32.0	33.4	31.7	41.6	30.6	47.3	30.9	51.6	29.3	55.1	28.0	58.0
37.5			29.5	26.1	29.1	36.4	28.1	43.2	28.2	48.2	26.7	52.1	25.5	55.3
40.0			27.3	15.8	26.8	30.6	25.9	38.7	25.9	44.5	24.5	48.9	23.3	52.4
42.5					24.9	23.4	23.9	33.8	23.9	40.5	22.6	45.6	21.5	49.5
45.0							22.2	28.1	22.2	36.3	20.9	42.0	19.8	46.5
47.5							20.7	20.9	20.6	31.5	19.4	38.2	18.3	43.3
50.0									19.2	25.8	18.0	34.1	17.0	39.8
52.5									18.0	18.7	16.8	29.3	15.8	36.1
55.0											15.7	23.8	14.7	32.1
57.5											14.8	16.5	13.7	27.4
60.0													12.8	21.9
Maximum Radius	31.8	15.0	27.2	15.0	23.5	15.0	19.9	15.0	17.6	15.0	14.6	15.0	12.1	15.0
	35.7		40.1		44.6		49.0		53.5		57.9		62.4	

Dimension in unit of meter. Rated load in unit of tonne. Angle in unit of degree.

CRANE REACH



HOOK SPEED (240kW)

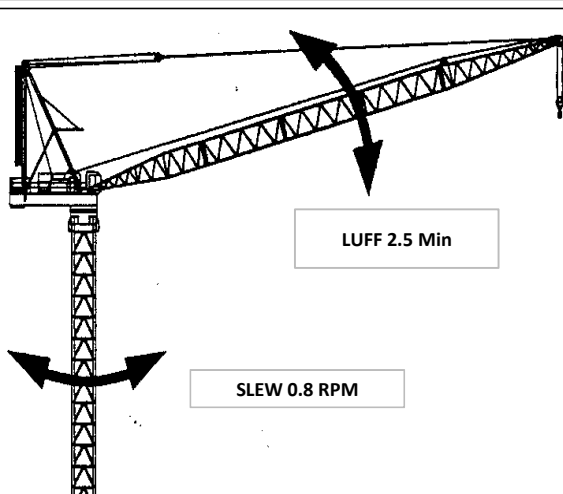


COMPONENT WEIGHT & GEOMETRY

COMPONENT	WEIGHT	QTY	L	H	W
Front Deck	7.5	1	3.59	1.96	3.43
Rear Deck	8.5	1	6.63	1.45	3.34
Slew Mount	6.7	1	4.22	1.87	3.56
Cabin	1.0	1	1.80	2.47	1.65
Cabin Platform	0.5	1	4.08	0.50	1.75
Counterweight	11.4	7	3.82	0.20	2.00
Powerpack + Winches	16.5	1	5.71	3.85	3.13
Slewing	2.9	1	3.12	3.12	0.23
Mast Assembly	7.4	1	13.25	3.50	2.86
Boom Extension 9.2m	1.7	*	9.32	2.84	2.82
Boom Bottom 13.7m	2.5	1	14.32	2.84	3.06
Boom Top 13.7m	2.9	1	14.32	2.84	2.84
Bridle	0.6	1	1.61	1.06	1.16
2-fall Hook	1.6	1	2.51	0.51	1.24
Tower 1052	5.3	*	3.51	4.00	3.52
Tower 1052R	6.0	*	3.51	4.00	3.52
Internal Ladder Climbing					
Climbing Tower + Cylinder	11.9	1	3.51	4.50	3.52
Climbing Foot	2.1	1	3.99	0.80	0.70
Climbing Ladder	0.7	*	*	0.26	0.18
External Climbing					
Monorail	1.84	1	7.43	1.27	0.60
Side Panel	6.5	2	11.52	0.55	3.80
Tie	1.2	2	7.02	0.55	3.80
Climbing Support	0.3	2	2.65	0.34	0.80
Access Platform	0.2	1	3.55	1.07	1.24

Geometry in meter. Weight in tonne.

Contact:



Note:

This datasheet is published for preliminary consideration and reference guide only. This datasheet should not be used for lifting purposes. Continuous engineering and improvements makes it necessary that Favelle Favco reserve the right to make changes to specification and equipment without prior notice.