

# TRUMPT. 1

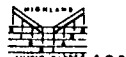
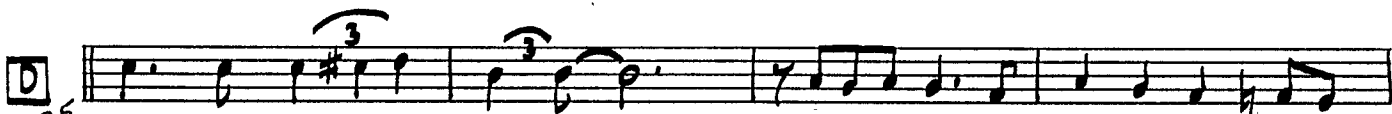
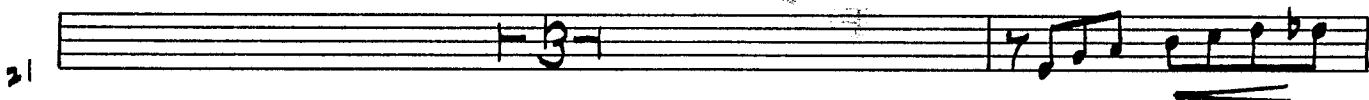
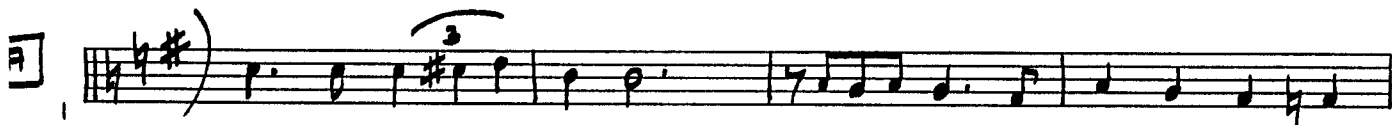
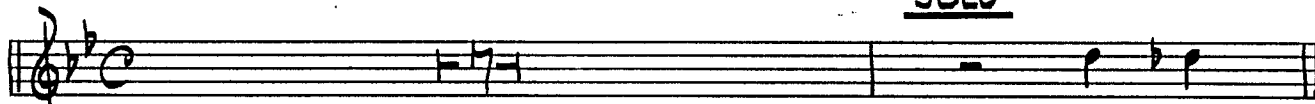
Mike Barone

# NANCY

2

$\text{♩} = 89$

SOLO

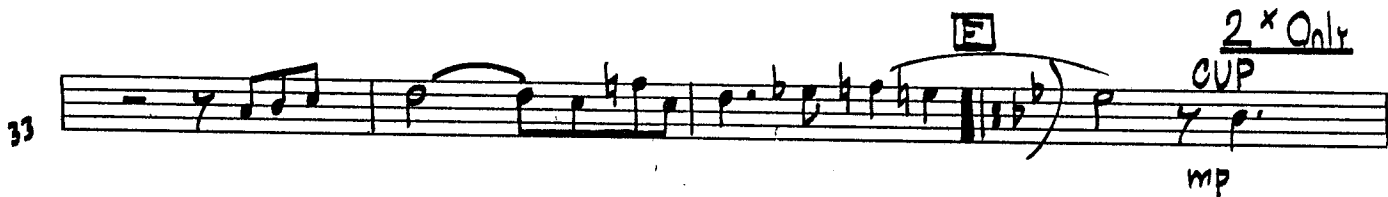


TRPT-1

2

NANCY

29 

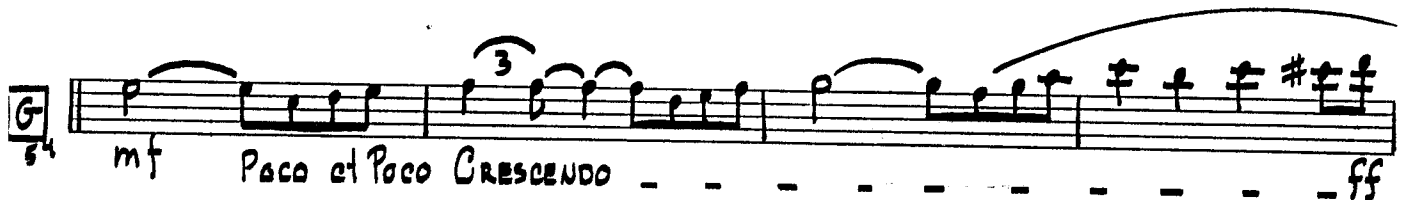
33 

37 

41 

46 

50 

54 

58 

62 

WHAT EVER HAPPENED TO THE SLIDING TROMBONE PLAYERS PARTS ?

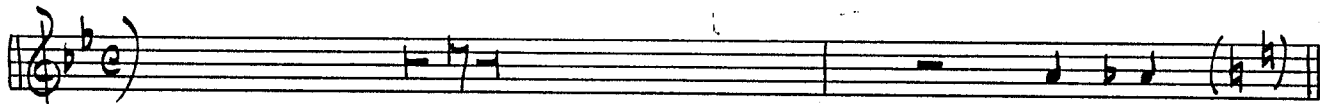


# TRUMPT. 2

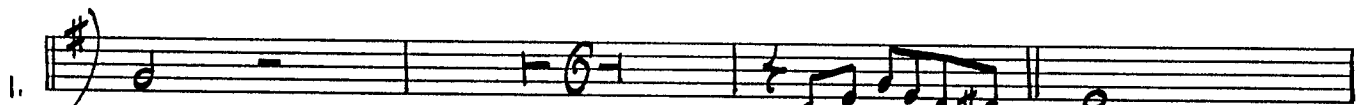
Mike Barone

# NANCY

# 2



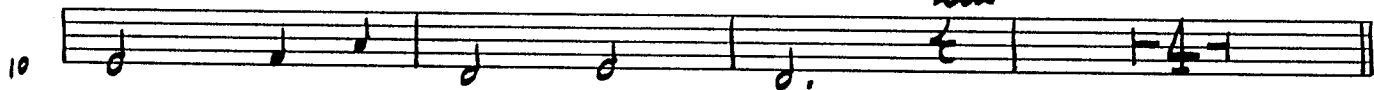
mp



p

9

CUP



10



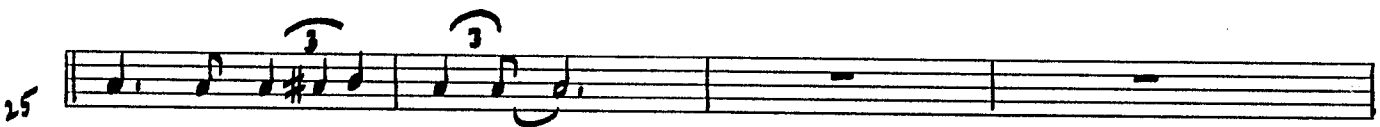
17

mf

OPEN



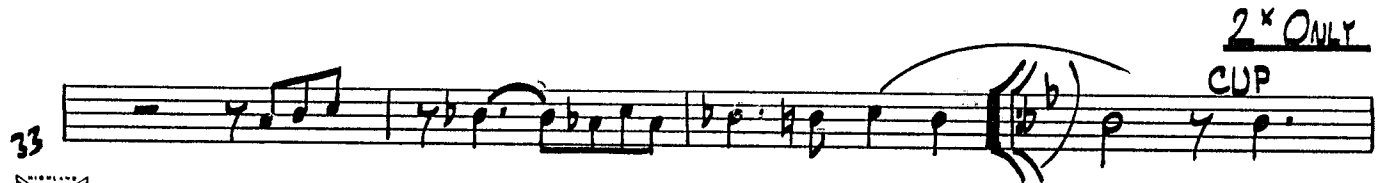
21



25



29

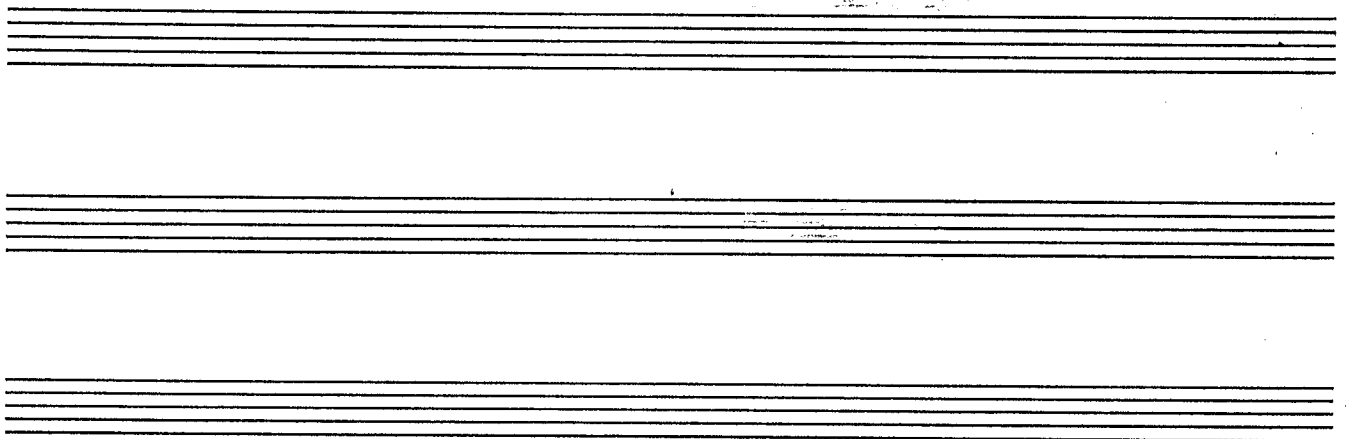
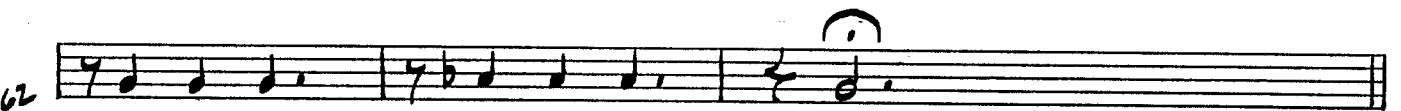


33

2x ONLY

CUP



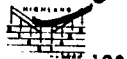
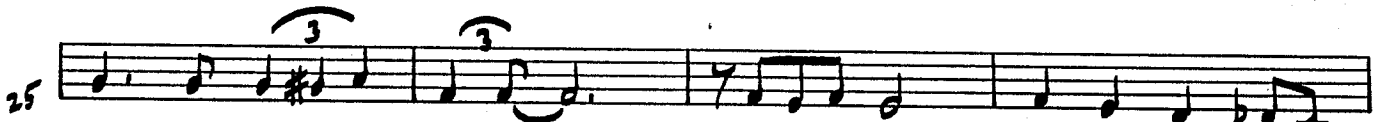
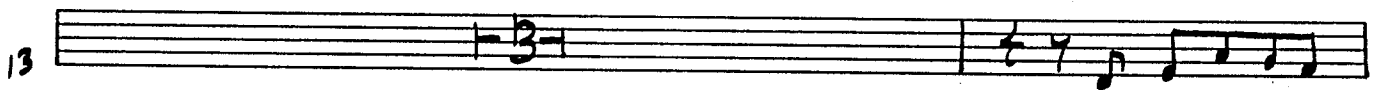
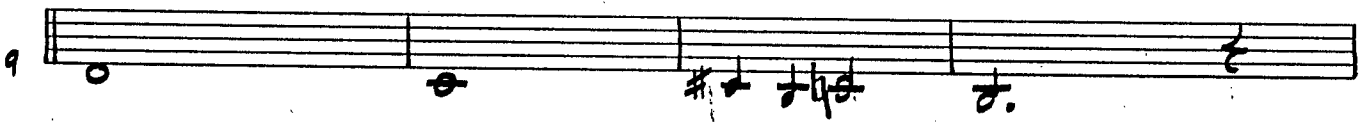


# TRUMPT. 3

Mike Barone

# NANCY

2



33 *mf* **B<sup>b</sup>** Solo

36 *mf* **Cm<sup>7</sup> F<sup>7</sup> B<sup>b</sup> E<sup>b</sup> Dm<sup>7</sup> D<sup>b</sup>m<sup>7</sup>**

40 *mf* **Cm<sup>7</sup> Am<sup>7-5</sup> D<sup>7</sup> Gm<sup>7</sup> C<sup>7</sup> Cm<sup>7</sup> Dm<sup>7</sup> D<sup>b</sup>m<sup>7</sup>**

44 *mf* **Gm<sup>7</sup> F<sup>#</sup>M B<sup>b</sup> Am<sup>7-5</sup> D<sup>7</sup> Gm**

48 *mf* **3**

52 *mf* **3** *mf* Poco et crescendo

56 *ff*

60 *mp*

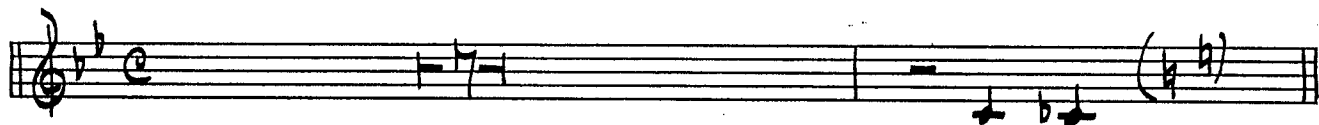
64 *p*

# TRUMPET 4

Mike Barone

# NANCY

2



TRPT 4

2.

NANCY

33

37

CUP

2<sup>ND</sup> Only

mf

41

1.

2.

OPEN

46

50

54

mf

Poco al crescendo

ff

58

62

p



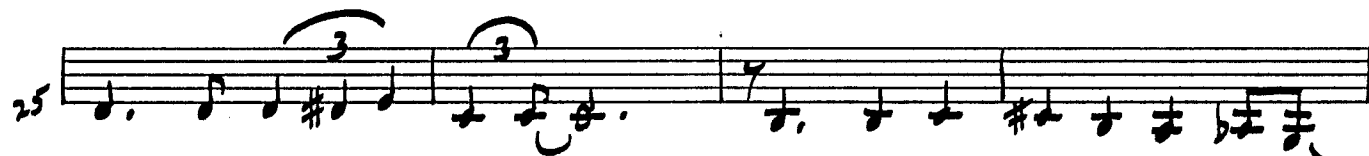
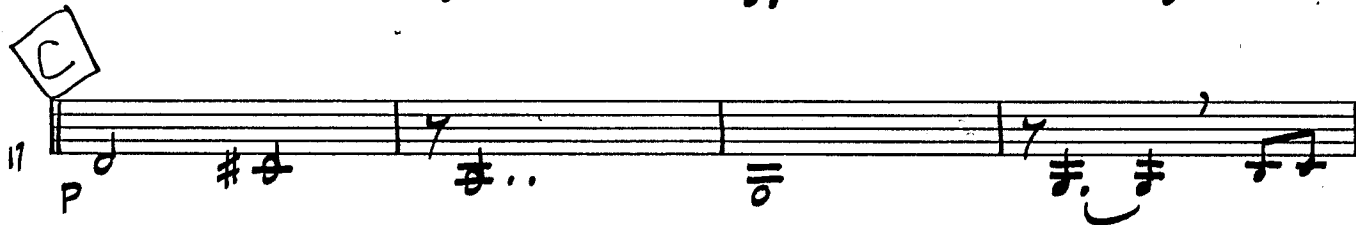
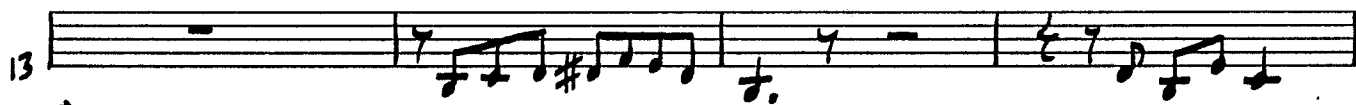
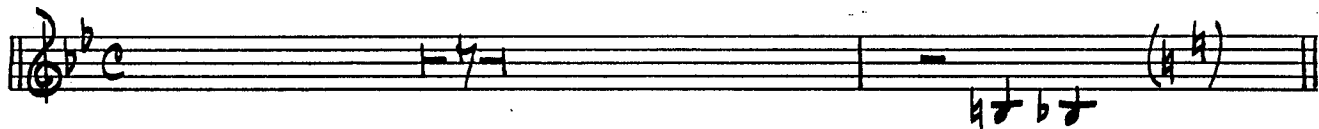


# TRUMPT. 5

Mike Barone

# NANCY

# 2



TRPT 5

3.

NANCY TO CUP

33

2<sup>x</sup> no X Only

37

41

F

46

50

54

*mf* Poco al crescendo *ff*

58

62

*p*

# GUITAR

Mike Barone

# NANCY

2

Musical notation for the first two staves. The first staff is in treble clef with a key signature of two flats (Bb, Eb). It contains a melodic line with chords Fm, Gm7, and C7-9. The second staff continues the melodic line with a triplet of eighth notes.

## CHORD FILLS

1.  $Gm^7$   $C^7$   $F$   $B^b$   $A^m$   $A^b m^7$

5  $Gm^7$   $Em^7-5$   $A^7-9$   $Dm^7$   $G^7$   $Gm^7$   $B^b b^6$   $A^m^7$   $A^b m^7$

9  $Gm^7$   $C^9$   $A^m^7$   $Gm^7$   $A^m^7$   $A^b m^7$

13  $Gm^7$   $Em^7-5$   $A^7-9$   $Dm^7$   $Dm^7$   $(G \text{ in Boss})$   $F$   $Em^7-5$   $A^7-9$

17 Solo  
8th

21  $F$   $Dm^7$   $E^b$   $E^b$

GUIT

2.

NANCY

25 *Gm7* *Loco* *Bm7-5 Bb9* *Am9 Bb Am7 Abm7*

29 *Gm7* *Em7-5 A7-9* *F*

33 *Cm'' Cm''* *Bbm7*

37 *Eb7* *Ab DM7* *Cm'' Cm'' Bbm9 Bbm7*

41 *Gm9-5 C7-9* *Fm7 Bb7 Bbm7 Cm7 Cm7* *Fm'' EMAJ*

45 *Ab Gm7-5 C7-9* *Loco*

49

53 *Cm3 Cm7 Bbm7 Eb7 Ab*

57 *Cm7* *Solo* *Dbm7* *Fm7*

61 *Ab9* *Gbm9* *EM9* *Ebm''*

# BASS

Mike Barone

## NANCY

2

1.

5.

9.

13.

17.

21.

BASS

2.

NANCY

25

29

33

37

E<sup>b</sup>7 A<sup>b</sup> D<sup>b</sup>M<sup>7</sup> C<sub>m</sub><sup>11</sup> C<sub>m</sub><sup>b</sup>7 B<sub>m</sub><sup>b</sup>9 B<sub>m</sub><sup>b</sup>7

41

G<sub>m</sub><sup>9-5</sup> C<sub>7</sub><sup>-9</sup> 1. F<sub>m</sub><sup>7</sup> B<sub>b</sub><sup>7</sup> B<sub>m</sub><sup>b</sup>7 C<sub>m</sub><sup>7</sup> C<sub>m</sub><sup>b</sup>7 2. F<sub>m</sub><sup>11</sup> E<sup>b</sup>M

45

A<sup>b</sup> G<sub>m</sub><sup>-5</sup> C<sub>7</sub><sup>-9</sup> F<sub>m</sub> G<sub>m</sub><sup>-5</sup> C<sub>7</sub><sup>-9</sup> F<sub>m</sub>

49

B<sub>b</sub><sup>7</sup> A7 A<sup>b</sup> F<sub>m</sub><sup>7</sup> B<sub>m</sub><sup>b</sup> G<sub>m</sub><sup>7</sup> C<sub>7</sub><sup>1</sup> F<sub>m</sub><sup>7</sup> B<sub>b</sub><sup>7</sup>

53

57

Solo

61

Rit.



# DRUMS

Mike Barone

2

# NANCY (SINATRA)

## Brushes

