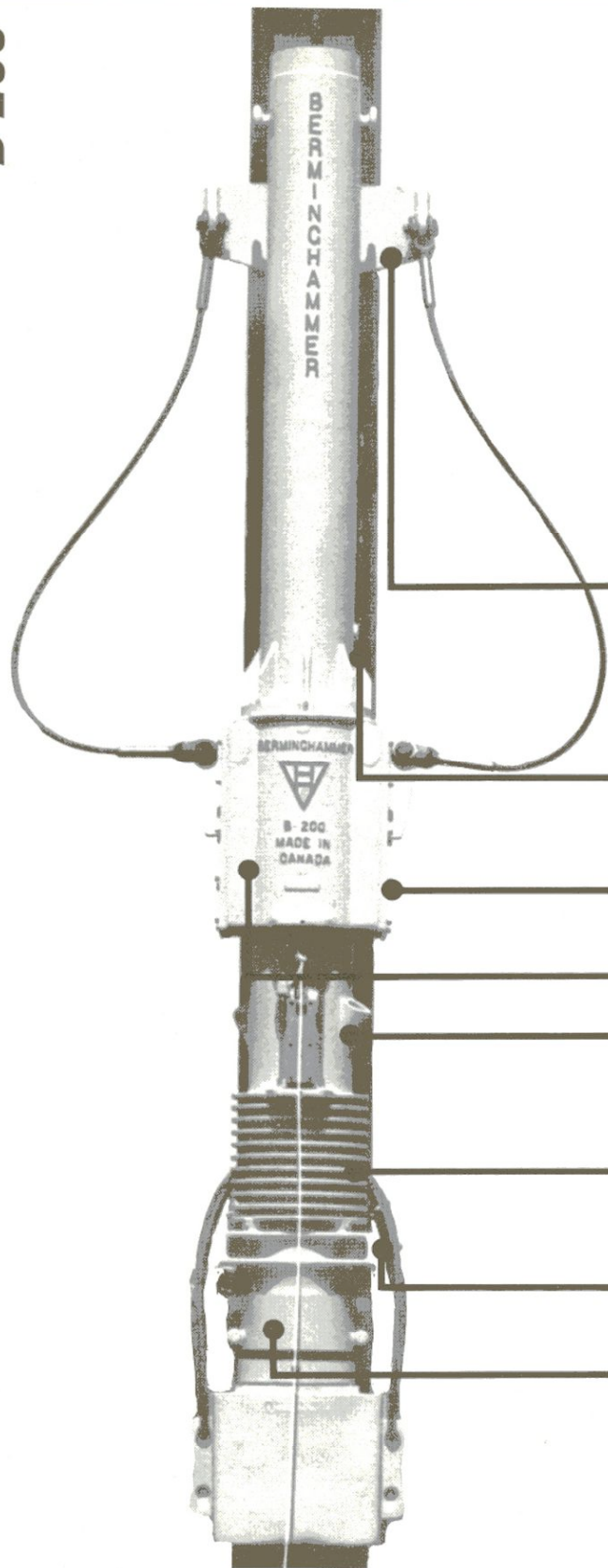


B-200



Model B-200 is a new hammer suitable for use with light cranes. It is ideally suited to the driving of timber piles, light steel bearing piles and lighter sections of steel sheet piling. The B-200 embodies all of the ruggedness of its more powerful "big brothers".

B-200
2,000 lbs. piston
907 kg.

Rated Energy per Blow
B-200
18,000 ft. lbs.
24 400 joules

Tripping Mechanism, travelling in an integrally cast track on upper cylinder, attaches to body of hammer by safety pendants, fitted with "wings" to ensure operator visibility.

Trip Lockout device to prevent accidental trip engagement when hammer is in operation.

Flat surface to facilitate mounting of box lead guides.

Integrally Cast Fuel Tank

Two large intake/exhaust ports designed to improve scavaging and introduction of fresh air to the combustion chamber.

New radial integrally cast cooling fins for more effective cooling.

Flat surface to facilitate mounting of box lead guides.

Outer End Ring with internal groove utilizing only four bolts to allow rapid assembly and disassembly.

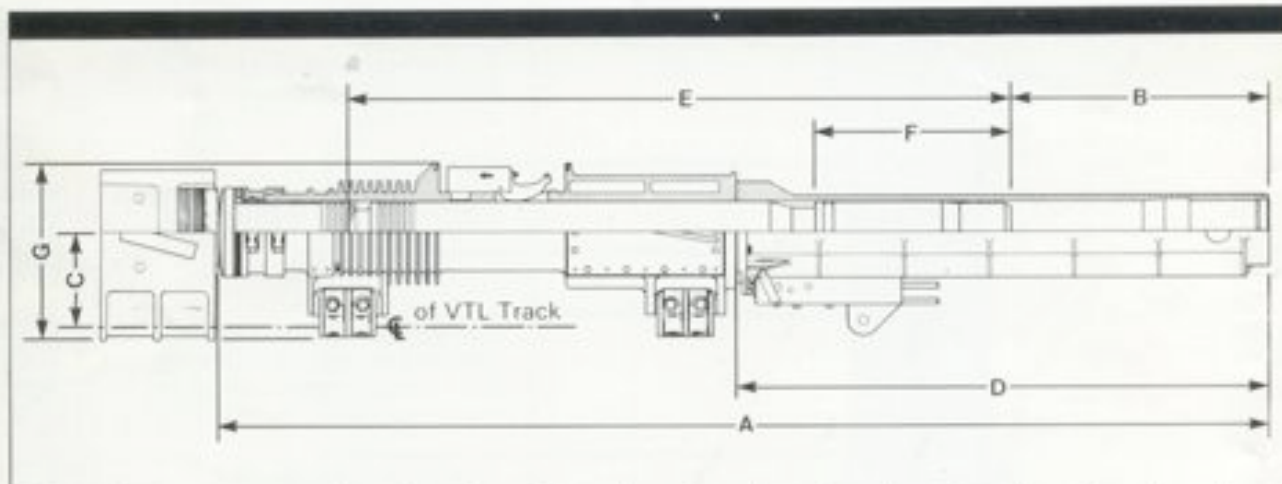
B-200 Diesel Pile Hammers



Specifications

Description		
Total Weight of Hammer excl. Trip & Drive Cap	5,500 lb.	2495 kg.
Piston Weight	2,000 lb.	907 kg.
Weight of Drive Cap	1,100 lb.	500 kg.
Weight of Trip & Pendants	340 lb.	154 kg.
Weight of Tool Box	100 lb.	45 kg.
Shipping Weight	7,040 lb.	3193 kg.
Maximum Piston Stroke	10'-2 1/4" ft.	3105 mm
Blows Per Minute	38-58	38-58
Fuel Tank Capacity	7.7 l. Gal	35 l
Lube Oil Capacity	3.1, Qt	3.4 l
Fuel Consumption	1 IGPH	4.5 l /Hr
Lube Oil Consumption	1 Pt/Hr	0.6 l /Hr
Rated Energy Per Blow	18,000 ft. lb.	24 400 Joules

Dimensions



Dimension		A	B	C	D	E	F	G
Model B-200	in.	165	40 3/4	14 1/2	84	104	30 2 1/32	27 1/4
	mm	4190	1035	368	2133	2641	779	692

Note: The minimum width for box lead applications is 20" (508 mm) over the guides.

Rentals, Sales & Service

Distributed by:



**Berminghammer Corporation
Limited**
Wellington Street Marine Terminal
Hamilton, Ontario, Canada L8L 4Z9
Telephone:
Hamilton (416) 528-0425
Toronto (416) 366-6779
Telex: 061-8443