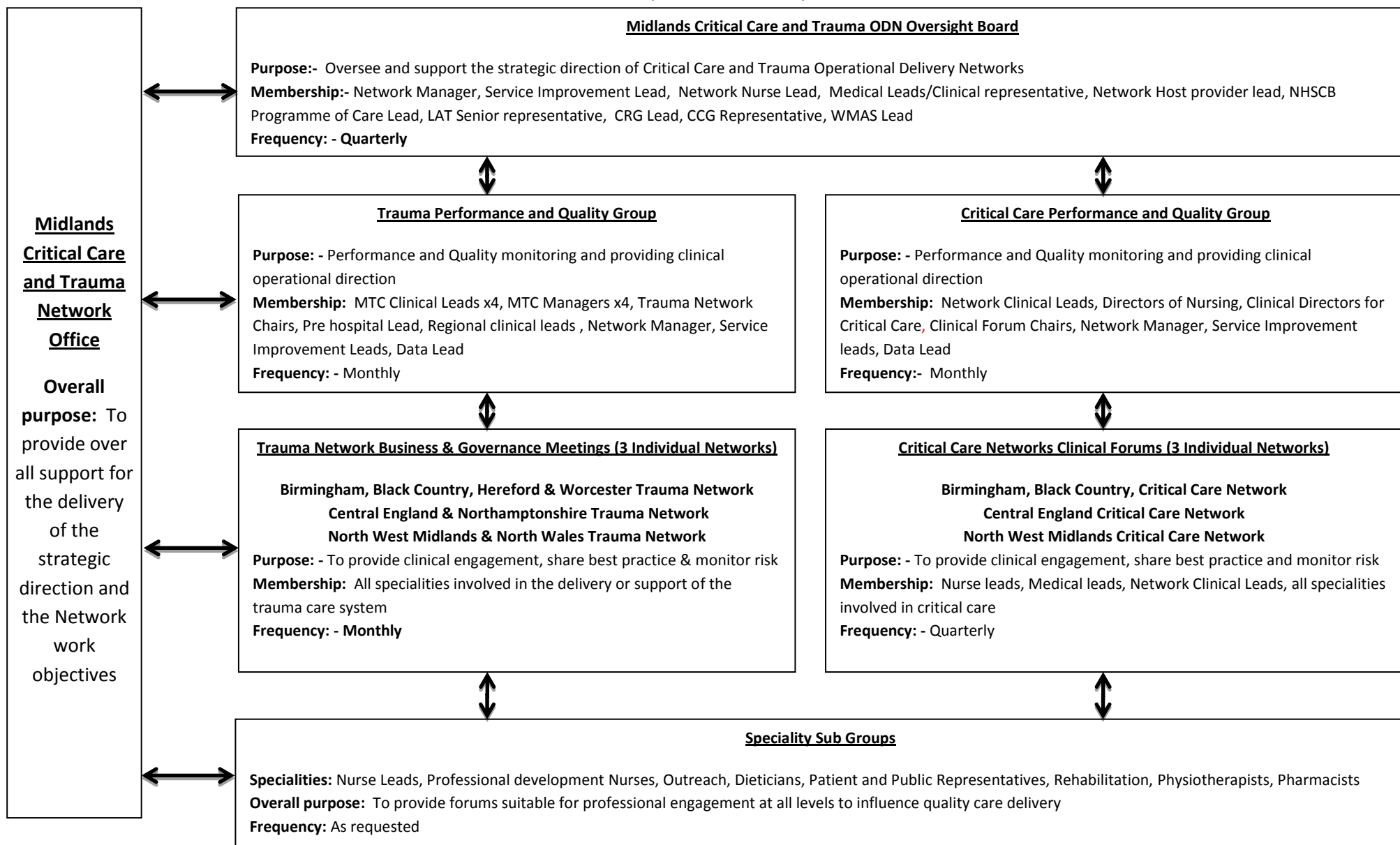


Midlands Critical Care and Trauma Operational Delivery Networks - Network Structure



Midlands Critical Care and Trauma Networks Office, 4th Floor, Kings House, 127 Hagley Road, Birmingham, B16 8LD

Acting Network Manager	Angela Himsworth	0121 455 8315
Service Improvement Facilitator	Sarah Graham	0121 454 7774
Data Analyst	Steve Littleson	0121 454 0636
Network Regional Clinical Lead	Sir Prof. Keith Porter	
Network Regional Rehabilitation Lead	Dr Alex Ball	

We are a combined Critical Care & Trauma Networks, which includes

Network Nurse Lead for CC	Angela Himsworth	0121 455 8315
Network Medical Leads for CC	Dr Duncan Watson & Dr Zahid Khan	
Network AHP/HCS Lead for CC	Emma Graham-Clarke	